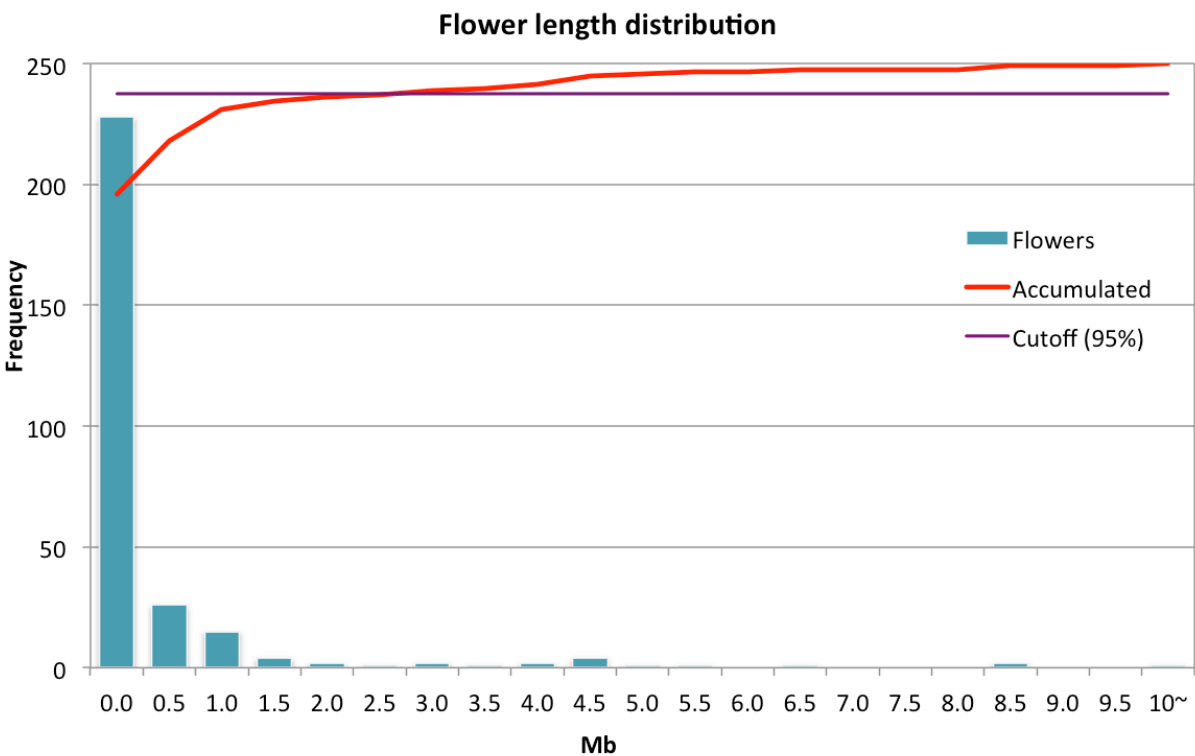
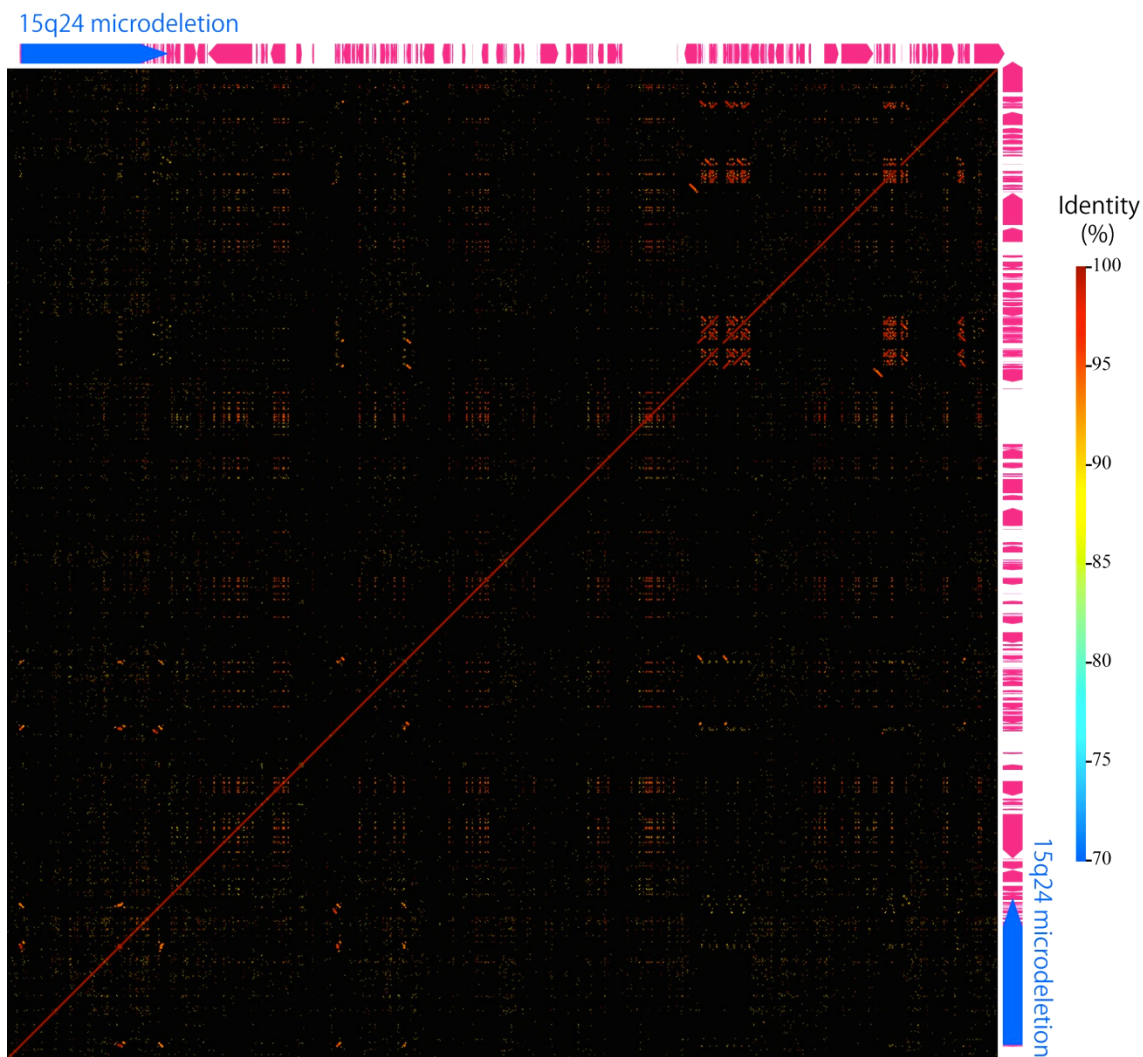


**Figure S1. Distribution of Flower length**

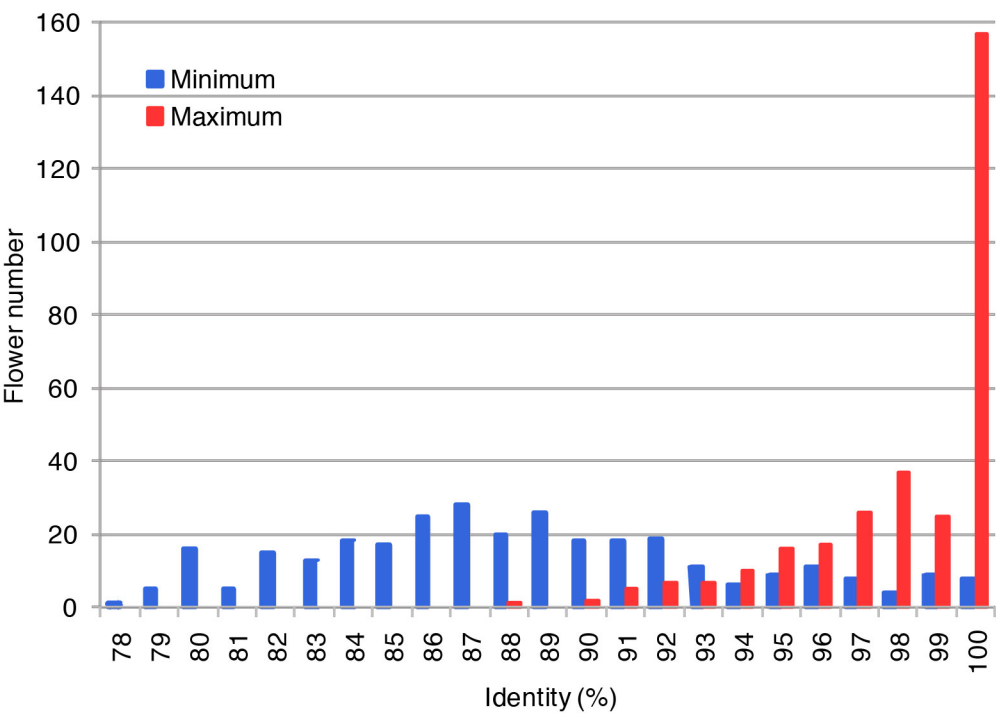


## Figure S2. Dot-plot of the largest Flower

The Flower is located on chromosome 15, 72.1-83.8 Mb. A line in the figure indicates a BLAST analysis 'hit' and the colors of the lines show the percent identities (see key on the right side). At the top and right of the dot-plot, a pink arrow indicates loci and length of genes. The blue arrow indicates loci in a region that shows up as a recurrent microdeletion.



**Figure S3. Distribution of maximum and minimum identity**



**Figure S4. The number of BLAST hits, categorized by percent identity.**

