

## Erratum

# Erratum to “*DNMT3A* Mutations in Patients with Acute Myeloid Leukemia in South Brazil”

**Annelise Pezzi,<sup>1,2</sup> Lauro Moraes,<sup>1</sup> Vanessa Valim,<sup>1,2</sup> Bruna Amorin,<sup>1,2</sup>  
Gabriela Melchiades,<sup>1</sup> Fernanda Oliveira,<sup>1</sup> Maria Aparecida da Silva,<sup>1,2</sup> Ursula Matte,<sup>3</sup>  
Maria S. Pombo-de-Oliveira,<sup>4</sup> Rosane Bittencourt,<sup>5</sup> Liane Daudt,<sup>5</sup> and Lucia Silla<sup>1,2,5,6</sup>**

<sup>1</sup> Cellular Therapy Center, Center for Experimental Research, Hospital de Clinicas de Porto Alegre, 90035-903 Porto Alegre, RS, Brazil

<sup>2</sup> Postgraduate Course of Medical Sciences, Federal University of Rio Grande do Sul, 90035-903 Porto Alegre, RS, Brazil

<sup>3</sup> Gene Therapy Center, Center for Experimental Research, Hospital de Clinicas de Porto Alegre, 90035-903 Porto Alegre, RS, Brazil

<sup>4</sup> Pediatric Hematology and Oncology Program, Research Center, Instituto Nacional de Câncer, 20230-130 Rio de Janeiro, RJ, Brazil

<sup>5</sup> Hematology and Bone Marrow Transplantation, Hospital de Clinicas de Porto Alegre, 90035-903 Porto Alegre, RS, Brazil

<sup>6</sup> Laboratory of Cell Culture and Molecular Analysis of Hematopoietic Cells, Center for Experimental Research, Hospital de Clinicas de Porto Alegre, 2350 Ramiro Barcelos, 90035-903 Porto Alegre, RS, Brazil

Correspondence should be addressed to Annelise Pezzi; [annepezzi@gmail.com](mailto:annepezzi@gmail.com)

Received 12 November 2013; Accepted 19 November 2013; Published 8 January 2014

Copyright © 2014 Annelise Pezzi et al. This is an open access article distributed under the Creative Commons Attribution License, which permits unrestricted use, distribution, and reproduction in any medium, provided the original work is properly cited.

The purpose of this note is to correct both the analysis and typographical errors.

The typos are as follows.

The abstract, line 6: In “in 6 patients (8%)” should read “in 5 patients (6%)”.

Page 4, line 12: In “8% (6) of the samples, being 5 missens” should read “6% (5) of the samples, being 4 missense”.

Page 4, line 19: In “Of the 6 cases” should read “Of the 5 cases”.

Page 4, line 20: In “(5, or 83.3%)” should read “(4, or 80%)”.

Page 4, second column, line 8: In “OS for patients with wild *DNMT3A* gene was 41.4% and for patients with mutated *DNMT3A* was 44.4% ( $P = 0.59$ )” should read “OS for patients with wild *DNMT3A* gene was 45.7% and for patients with mutated *DNMT3A* was 60.0% ( $P = 0.47$ )”.

Page 6, line 4: In “found in 8%” should read “found in 6%”.

Page 6, second column, line 13: In “3 of 6 mutations” should read “3 of 5 mutations”.

Page 6, second column, line 16: In “Five, or 80%,” should read “Four, or 80%,”.

Page 6, second column, line 18: In “( $P = 0.28$ )” should read “( $P = 0.34$ )”.

Page 6, second column, line 20: In “( $20.7 \times 10^9/L$ )” should read “( $15.6 \times 10^9/L$ )”.

Table 4, column 2, line 6: In “H896\*” should read “P896\*”.

Table 4: Entire line 7 was excluded.

Table 5, line 2: In “40.2, 44.8 and 0.56” should read “47.4, 40.4 and 0.42”.

Table 5, line 4: In “50% (3), 59.3% (45) and 0.68” should read “60% (3), 57.9% (44) and 0.92”.

Table 5, line 5: In “50% (3), 40.7% (31)” should read “40% (2), 42.1% (32)”.

Table 5, line 19: In “50% (3), 51.4% (37) and 1.000” should read “40% (2), 52.7% (39) and 0.66”.

TABLE 4: Description of somatic mutations found in gene *DNMT3A*.

Patient identification	Mutation	Allelic change	Exon	Type of mutation	FAB subtype	PCR	Risk group	Karyotype
39	D748N	G > A	19	Missense	M1	Negative	Intermediate	Normal
79	R882H	G > A	23	Missense	M1	Negative	Intermediate	Trisomy (8)(9)
4	R882H	G > A	23	Missense	M3	Negative	Intermediate	Normal
70	R882H	G > A	23	Missense	M2	Negative	Intermediate	Normal
41	P896*	A > G	23	Silent	M3	PML/RAR $\alpha$	Favorable	t(15;17)

TABLE 5: Clinical characteristics of patients with Acute Myeloid Leukemia with or without *DNMT3A* mutations.

Characteristics	Number of pts (%) <i>DNMT3A</i> mutated	Number of pts (%) <i>DNMT3A</i> not mutated	P
Age (median)	47.4	40.4	0.42
Sex			
Male	60% (3)	57.9% (44)	0.92
Female	40% (2)	42.1% (32)	
Subtype FAB			
M0	0%	7.2% (5)	0.56
M1	60% (3)	18.8% (13)	
M2	20% (1)	30.4% (21)	
M3	20% (1)	20.3% (14)	
M4	0%	18.8% (13)	
M5	0%	1.4% (1)	
Not M3	0%	2.9% (2)	
Risk groups			
Favorable	20% (1)	29.8% (17)	1.000
Intermediate	80% (4)	59.6% (34)	
Unfavorable	0%	10.5% (6)	
Leukocytes ( $\times 10^3$ ) (median)	20.67	6.41	0.28
Death	40% (2)	52.7% (39)	0.66
Relapses	40% (2)	29.2% (21)	0.63
Refractory	20% (1)	19.1% (13)	0.96

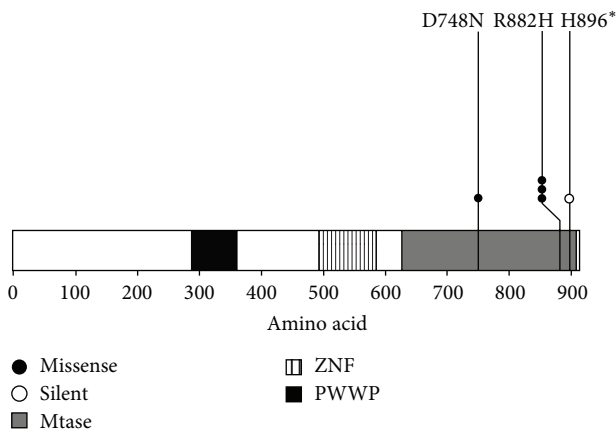


FIGURE 3

Table 5, line 20: In “50% (2), 30.9% (17) and 0.58” should read “40% (2), 29.2% (21) and 0.63”.

We changed Figure 3 as shown above.



**Hindawi**  
Submit your manuscripts at  
<http://www.hindawi.com>

