

Supplementary Information

Figure S1: Surface air temperature profiles for all ten Tinytag sensors, with accompanying Logtag temperature profiles discussed in Section 3.5. See Table 1 and Figure 1 for details of sensor locations and heights above surface (1-m and 2-m).

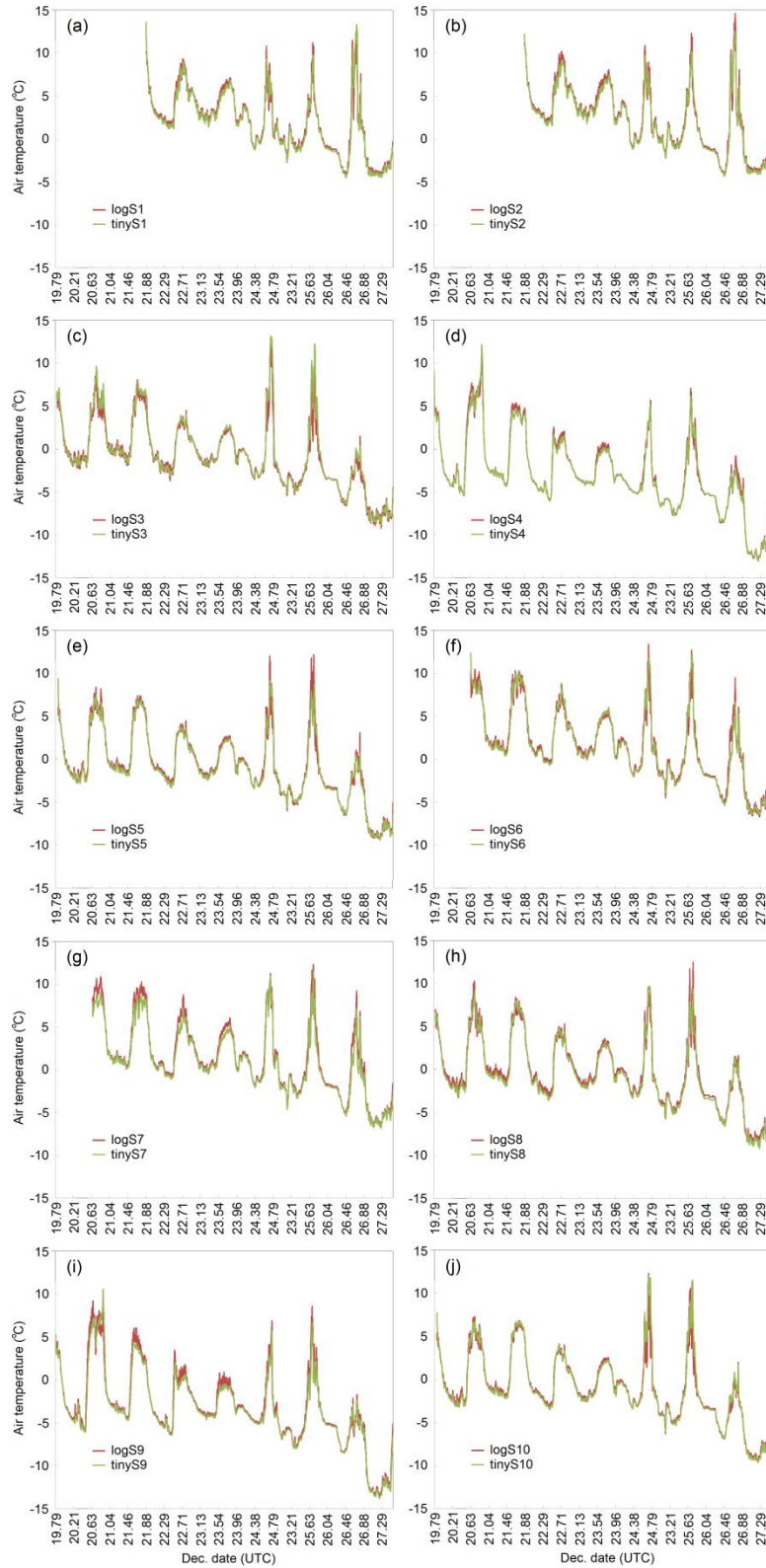


Figure S2: Mean daily cycles (22-26 March 2015) of data shown in Figure S1.

