

Figure 1. Effect of staurosporine on epithelial cells (panel A). The actin cytoskeleton (a) and the nuclei (a ') in control cells and exposed to staurosporine 20 μ M at 20h (b and b'). Microfilaments were decorated with FITC-phalloidin, and the DNA was stained with DAPI. Panel B. The genomic DNA of control cells (lane 1) and treated with staurosporine (lane 2) were observed, lane M is size markers (bp). Electrophoresis was performed on a gel of 1.5% agarose.

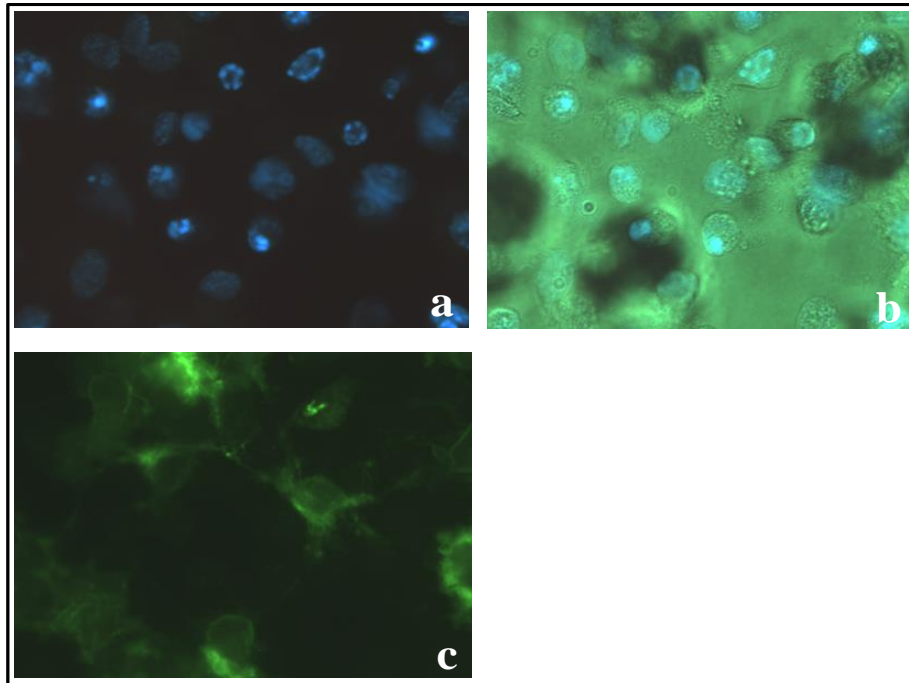


Figure 2. Effect of staurosporine on epithelial cells. Nuclei stained with DAPI (a), the bright field (b) and microfilaments decorated with FITC-phalloidin (c) is shown. Notice that fragmentation of nuclei in the cells is remarkable.