

Supplementary Figure S1. HIF-2 α expression in the livers of mice at the ages of 2, 12 and 18-19 months

No visible HIF-2 α signals can be detected in the livers of wildtype or *LRRK2*^{-/-} mice at these ages. Scale bars: 50 μ m.

Supplementary Figure S2. HIF-2 α expression in the kidneys of mice at the ages of 2, 12 18-19 and 22-23 months

(A) Non-specific HIF-2 α signals can be detected in the kidneys of 22-23 months old *LRRK2*^{-/-} mice. (B) No apparent HIF-2 α signals can be detected in the kidneys of wildtype or *LRRK2*^{-/-} mice at the ages of 2, 12 and 18 months. Scale bars: 50 μ m.

Figure S1

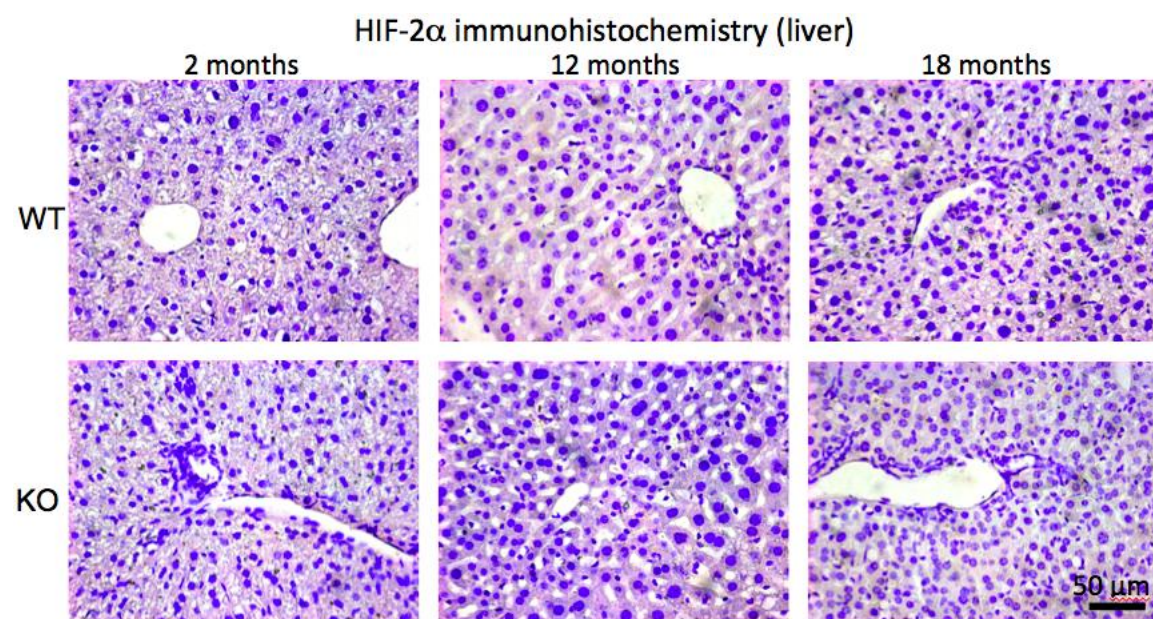
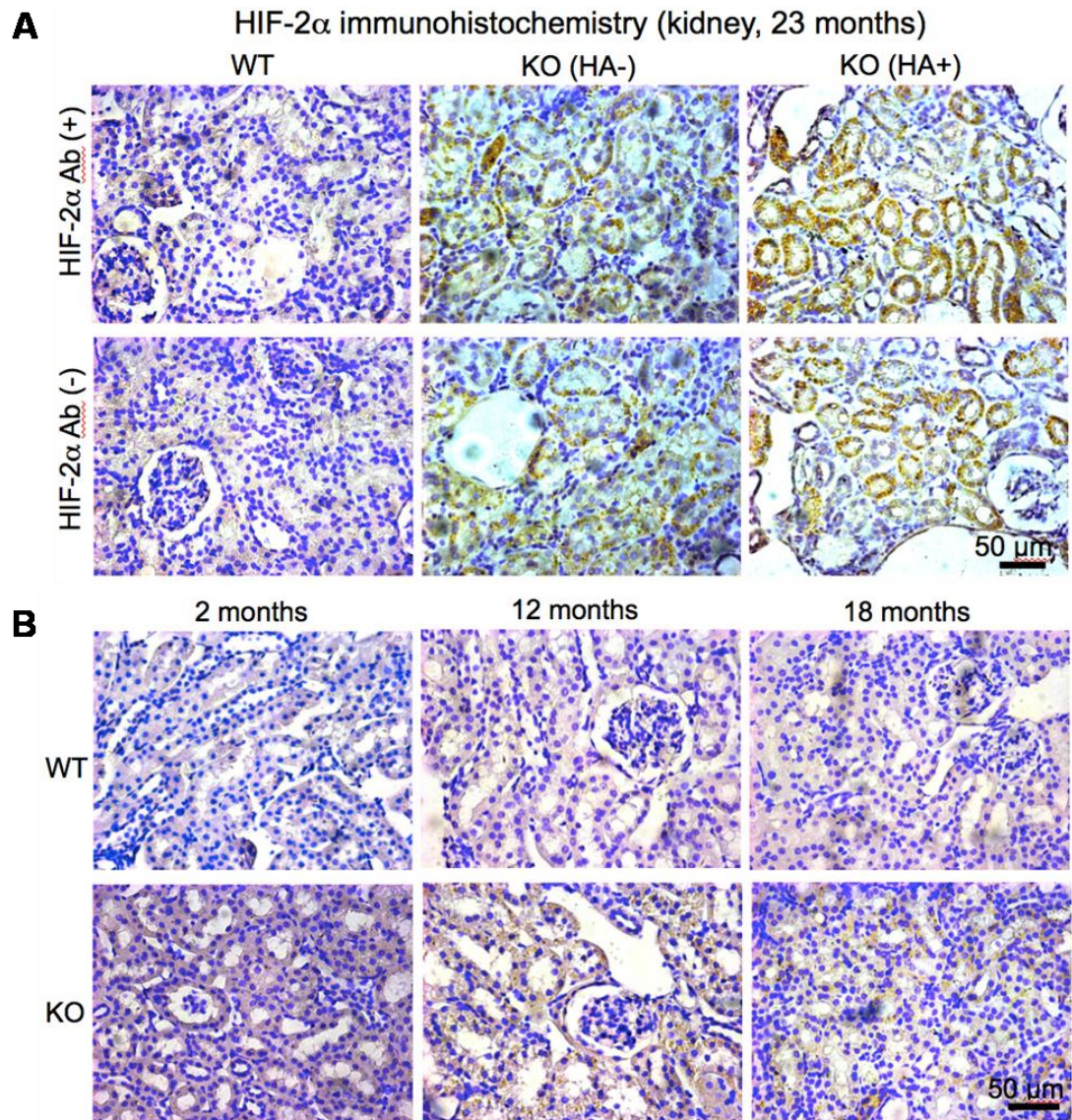


Figure S2



Supplementary Table S1. Relative *EPO* levels in the kidneys of 23-month mice

(*GAPDH* as control)

WT	0.3746612	0.6450844	0.7177532	0.9643506	1.277065	2.021026
KO (HA-)	0.1968609	0.5855199	1.017661	1.608839	2.362331	2.664026
KO (HA+)	0.7156684	1.817315	3.06013	3.466659	21.90904	79.12023

Supplementary Table S2. List of qPCR primers.

Gene	Position		Primer sequences
<i>GAPDH</i>	exon 4-5	Forward	AAC TTTGGCATTGTGGAAGG
		Reverse	GGATGCAGGGATGATGTTCTG
<i>EPO</i>	exon 3-4	Forward	AGTCAACTTCTATGCTTGGA
		Reverse	CAGGATGGCTTCTGAGAG
<i>VEGF</i>	exon 2-3	Forward	ACGACAGAAGGAGAGCAGAAG
		Reverse	TCTCAATCGGACGGCAGTAG
<i>LRRK2</i>	exon 1-2	Forward	GGAGGCTCTGAAGAAGTTG
		Reverse	TACACTGGCAACTCTCATG