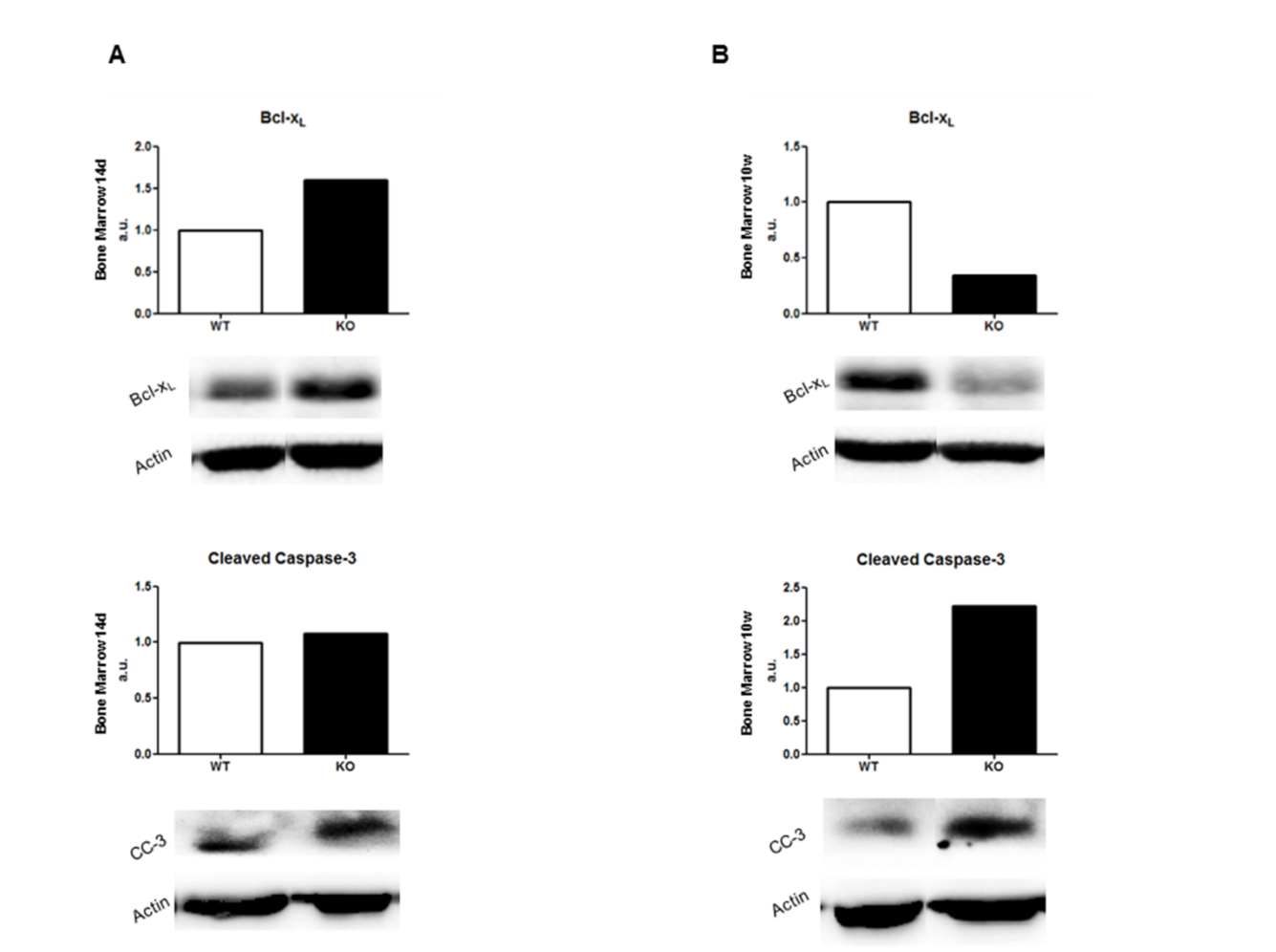


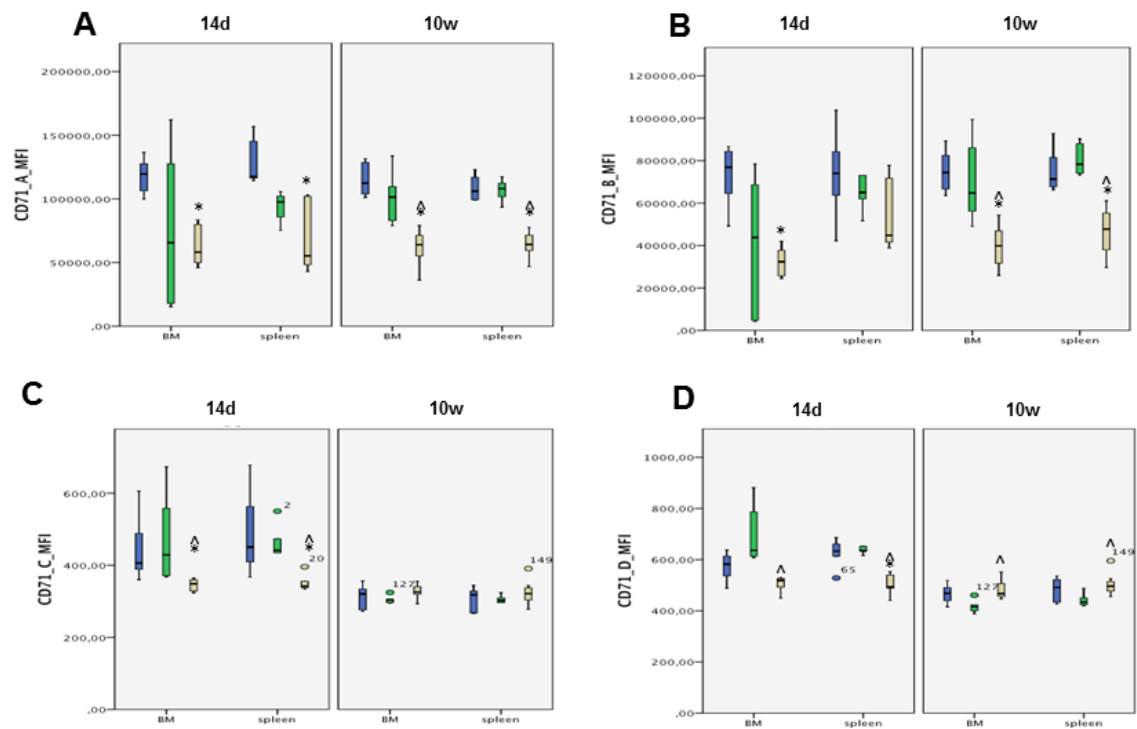
## ALTERED ERYTHROPOIESIS IN MOUSE MODELS OF TYPE 3 HEMOCHROMATOSIS (HFE3)

R.M. Pellegrino, F. Riondato, L. Ferbo, M. Boero, A. Palmieri, L. Osella, P. Pollicino, B. Miniscalco, G. Saglio, A. Roetto



**FIGURE S1**

Western blot analysis show Bcl-x<sub>L</sub> and Cleaved Caspase-3 (CC-3) proteins production in bone marrow of WT and Tfr2 KO mice at A)14 days and B)10 weeks of age. a.u.: arbitrary unit.



**FIGURE S2**

Flow cytometric analysis of mean fluorescence intensity (MFI) of CD71 in the different maturation stage of erythroid precursors (A: EryA; B: EryB, C: EryC, D: EryD) in BM and spleen. blue: Wild Type; green: Tfr2 KI; yellow: KO. 14d: 14 days; 10w: 10 weeks