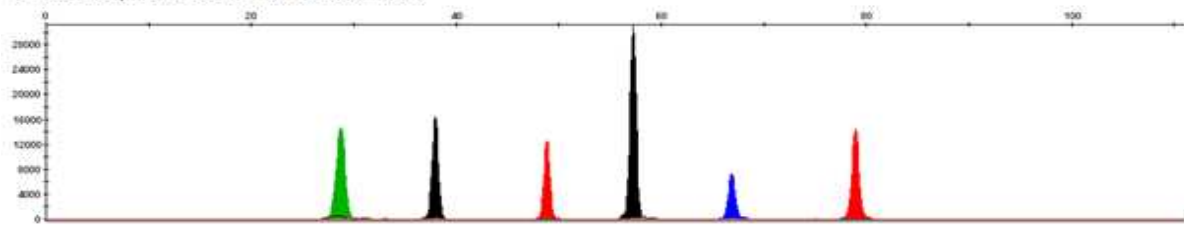
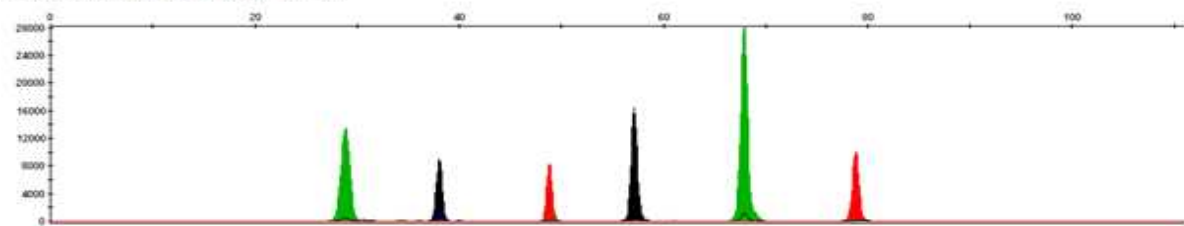


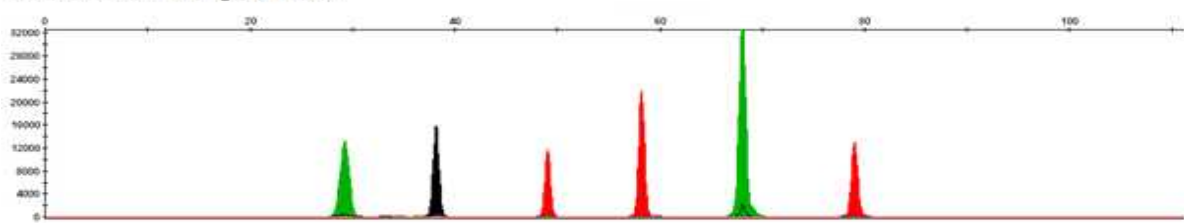
Lucilia ampullaceae (Villeneuve, 1922)



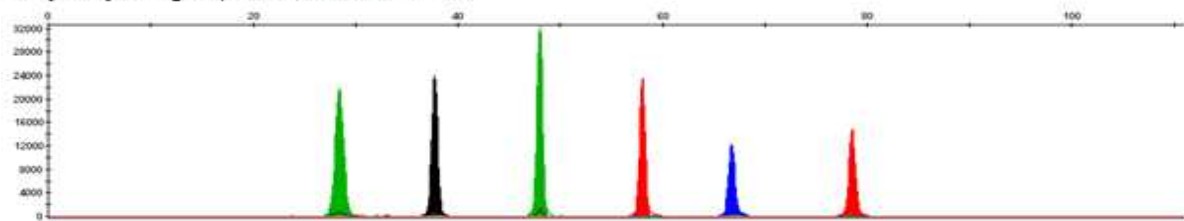
Lucilia caesar (Linnaeus, 1758)



Lucilia illustris (Meigen, 1826)

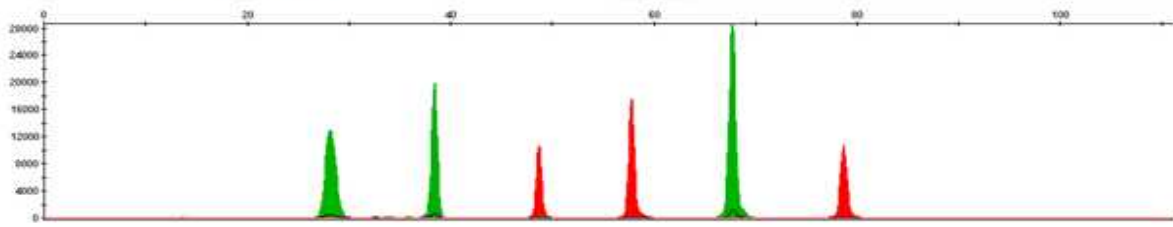


Chrysomya megacephala (Fabricius, 1794)

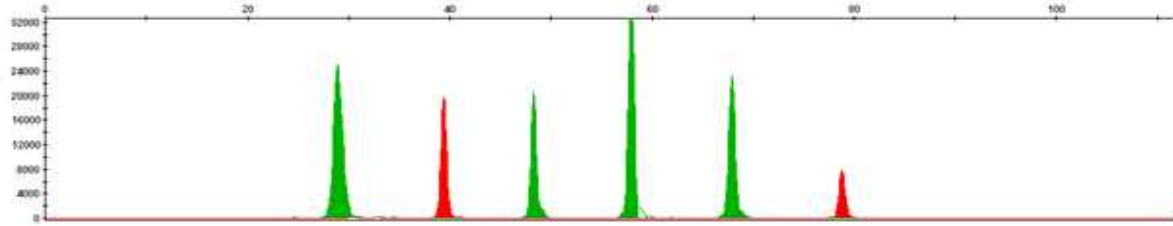


Supplementary Figure 1-1. Multiplex system results for Calliphoridae species: using Calliphoridae (CA)-SNaPshot.

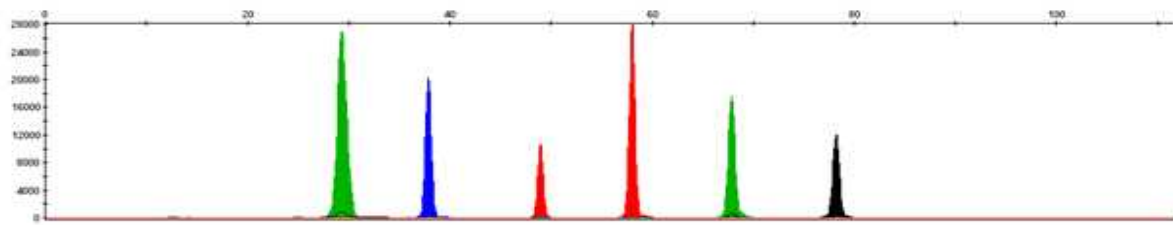
Calliphora lata (Coquillett, 1898)



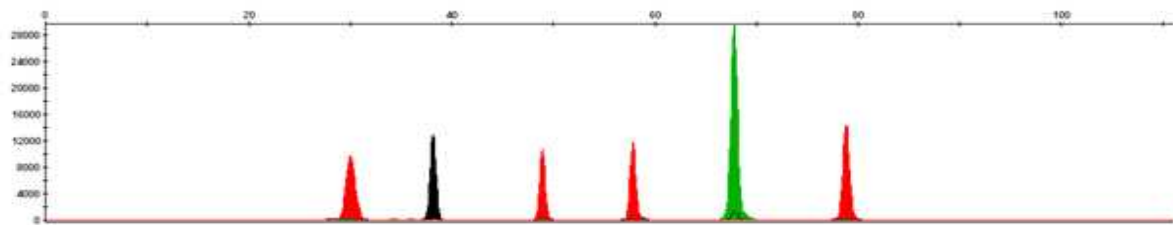
Phormia regina (Meigen, 1826)



Calliphora vicina (Robineau-Desvoidy, 1830)

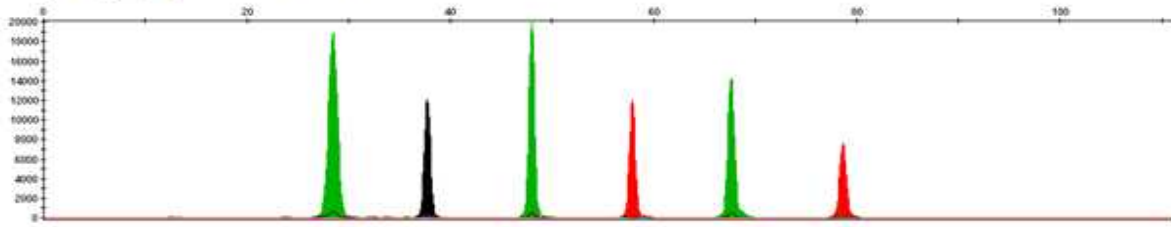


Lucilia sericata (Meigen, 1826)

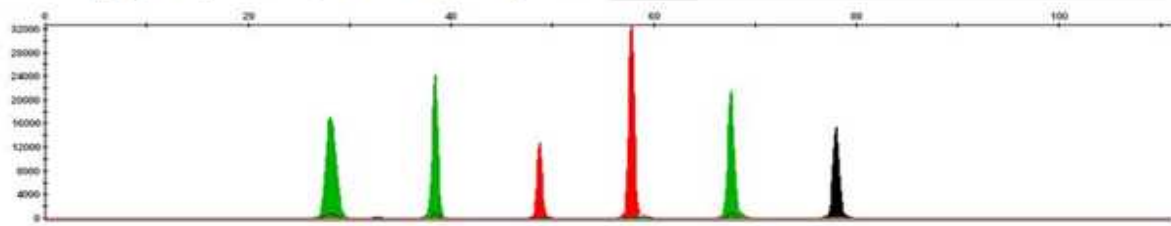


Supplementary Figure 1-2. Multiplex system results for Calliphoridae species: using Calliphoridae (CA)-SNaPshot.

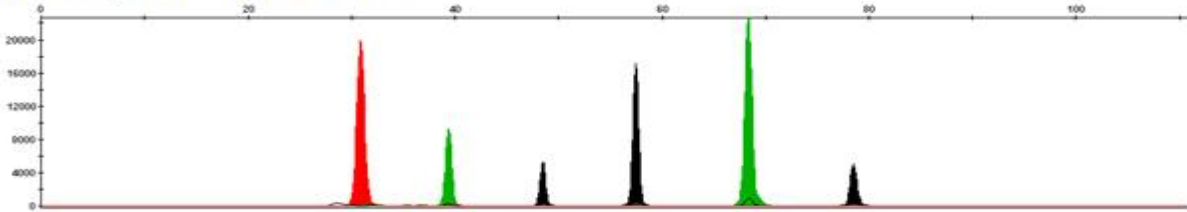
Chrysomya pinguis (Walker, 1858)



Triceratopyga calliphoroides (Rohdendorf, 1931)

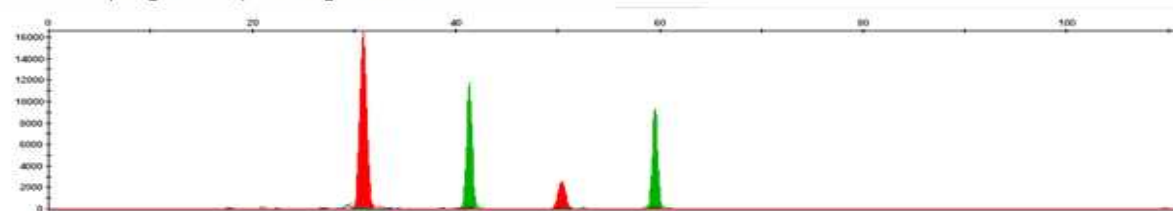


Aldrichina grahami (Aldrich, 1930)

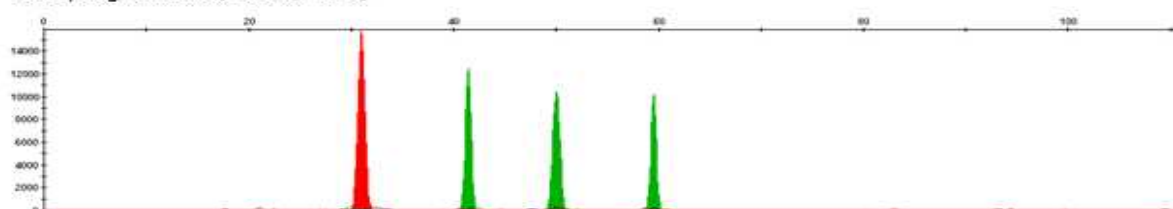


Supplementary Figure 1-3. Multiplex system results for Calliphoridae species: using Calliphoridae (CA)-SNaPshot.

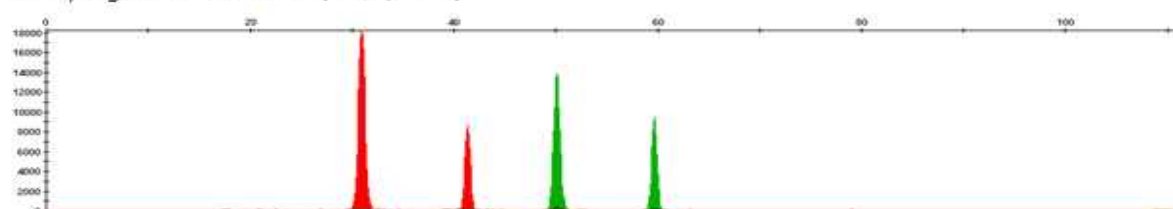
Parasarcophaga albiceps (Meigen, 1826)



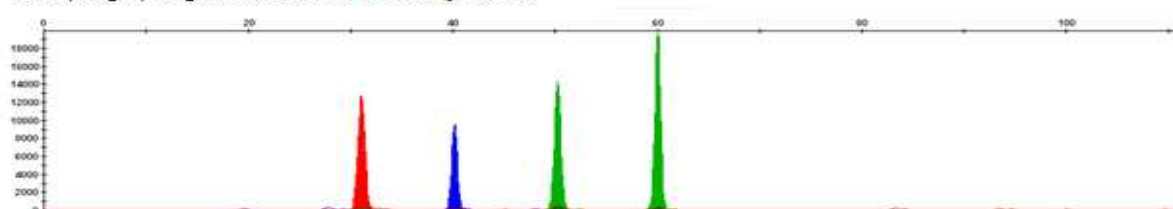
Sarcophaga similis (Meade, 1876)



Sarcophaga haemorrhoidalis (Fallén, 1817)

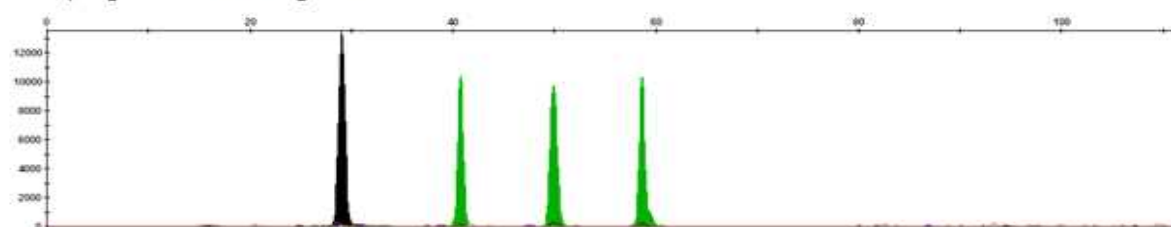


Sarcophaga peregrina (Robineau-Desvoidy, 1830)

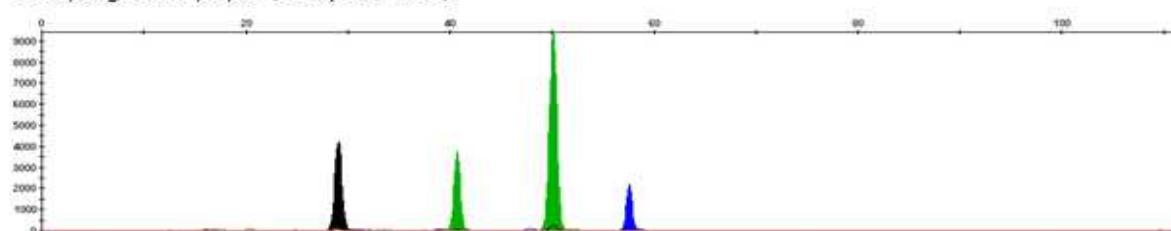


Supplementary Figure 2-1. Multiplex system results for Sarcophagidae species: using Sarcophagidae (SA)-SNaPshot.

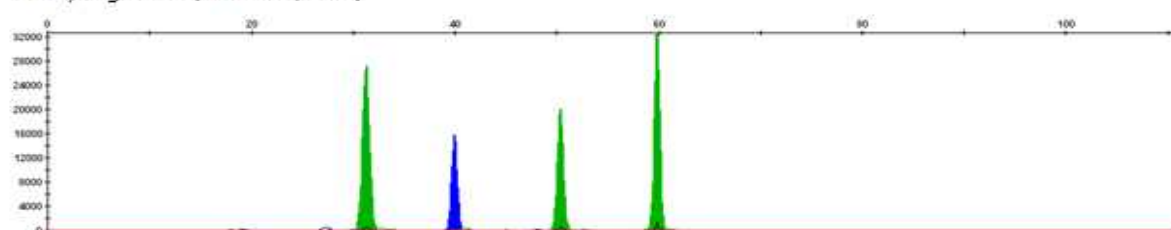
Sarcophaga melanura (Meigen, 1826)



Sarcophaga crassipalpis (Macquart, 1839)



Sarcophaga dux (Thomson, 1869)



Supplementary Figure 2-2. Multiplex system results for Sarcophagidae species: using Sarcophagidae (SA)-SNaPshot.