

Research Article

Genome-Wide Identification, Evolution, and Transcriptional Profiling of *PP2C* Gene Family in *Brassica rapa*

Nadeem Khan ¹, Han Ke,¹ Chun-mei Hu ^{1,2}, Emal Naseri,¹ Muhammad Salman Haider,¹ Aliya Ayaz,¹ Waleed Amjad Khan ¹, Jianjun Wang,¹ and Xilin Hou¹

¹State Key Laboratory of Crop Genetics and Germplasm Enhancement, Ministry of Science and Technology/College of Horticulture, Nanjing Agricultural University, Nanjing 210095, China

²New Rural Research Institute in Lianyungang, Nanjing Agricultural University, Nanjing 210095, China

Correspondence should be addressed to Chun-mei Hu; jjhcm@njau.edu.cn

Received 27 October 2018; Revised 6 January 2019; Accepted 12 February 2019; Published 3 April 2019

Guest Editor: Mohammad G. Mostofa

Copyright © 2019 Nadeem Khan et al. This is an open access article distributed under the Creative Commons Attribution License, which permits unrestricted use, distribution, and reproduction in any medium, provided the original work is properly cited.

The type 2C protein which belongs to the major group of protein phosphatases (PP2C) plays a vital role in abscisic acid (ABA) signaling and signal transductions processes. In the present study, 131 *PP2C* genes were identified in total in *Brassica rapa* and categorized into thirteen subgroups based on their phylogenetic relationships. These *B. rapa* *PP2C* are structurally conserved based on amino acid sequence alignment, phylogenetic analysis, and conserved domains. Moreover, we utilized previously reported RNA-sequence data on various tissues (root, stem, leaf, flower, and silique), which suggests overlapping expression pattern in 29 paralogous gene pairs. The qRT-PCR validation of 15 paralogous gene pairs depicts distinct expression patterns in response to various abiotic stresses, such as heat, cold, ABA, and drought. Interestingly, stress-responsive *BraPP2C* candidate genes were also identified, suggesting their significance in stress-tolerance mechanism in *B. rapa*. The evolutionary analysis for 15 paralogous gene pairs suggested that only three pairs have the positive selection and remaining were purifying in nature. The presented results of this study hasten our understanding of the molecular evolution of the *PP2C* gene family in *B. rapa*. Thus, it will be ultimately helping in future research for facilitating the functional characterization of *BraPP2C* genes in developing the abiotic stress tolerant plants.

1. Introduction

In cellular signaling, the reversible protein phosphorylation catalyzed by protein kinases (PKs) and phosphatases (PPs) is known to participate in critical processes [1]. In plants, the reversible protein phosphorylation is one of the critical modification processes, which helps in the regulation of some important physiological and biochemical reactions. The PPs provide modulations of protein phosphoregulation by reversing the action of PKs. The PPs can be categorized into two major classes, such as protein tyrosine phosphatase (PTPs) and protein serine/threonine phosphatases (PSPs) based on the substrate specificity [2]. Moreover, most of the PSPs are further subcategorized into two groups; group one includes protein phosphatase 1 (PP1), PP2A, PP2B, PP4, PP5, and PP6, while group two contains protein phosphatase M

(PPM), including the PP2C and also pyruvate dehydrogenase phosphatases [2].

From prokaryotes to higher eukaryotes, the PP2C are evolutionarily conserved and mostly found in archaea, bacteria, fungi, plants, and animals [3, 4]. Furthermore, it acts as a negative modulator of PKs cascades activated and then implicated in regulating stress-signaling pathways. Like PKs, PPs also share a crucial role under various stress conditions and might be pivotal at different developmental stages of plants and signal transduction processes. Particularly in *Arabidopsis* and *Brassica rapa* recently, several groups of the researcher are engaged by deciphering the involvement of different kinases against biotic and abiotic stress networks such as MAPKs [5, 6], CDPKs [7, 8], and CIPKs [9, 10]. For instance, temperature (high and low) stresses are the major environmental factor that limits crop productivity in

vegetable production [11, 12]. Generally, during cold treatment in which plants adjust their metabolism are considered as cold acclimation. To date, several studies highlighted the importance of PP2C that may play pivotal roles in various processes, including both biotic-abiotic stress factors and plant development [13, 14]. In plants, PP2C members have been described as a regulator of desiccation tolerance and act as a negative regulator in the ABA-signaling pathway [15–17]. For example, in moss, the only two *PpABI1A* and *PpABI1B* belonging to subfamily A of PP2C are known to induce desiccation tolerance in vegetable and are directly involved in ABA signaling [18]. In addition, drought stress considerably affects the crop productivity with an ultimate decline of photosynthetic assimilates, due to the osmotic stress-imposed constraints. Plants can utilize adaptive strategies against drought stress, such as escape, avoidance, and tolerance [19]. The validation of maize *ZmPP2C-A10* by transgenic studies has confirmed its negative regulation in drought stress tolerance [20]. In particular, the two PP2C genes encoding ABA-insensitive mutants (*abi1-1* and *abi2-1*) are known to partake in the various physiological processes after exposure to abiotic stimuli, including salt, drought, and freezing [21–24]. Plant development and freezing tolerance were accelerated by downregulation of *PP2CA* genes and the antisense mediation [25]. Hence, for a better understanding of protein phosphatases and their functional significance, the identification of PP2C provides a stepping stone in stress-signaling pathways.

Brassica rapa, a diploid species, share a complex history with model plant *Arabidopsis* and has experienced two main duplication events such as (WGD α and β) and additional one whole-genome triplication event (WGT γ) 13–17 million years ago (MYA) [26, 27]. Thus, the *B. rapa* due to WGT event has experienced considerable fractionation in the genome (i.e., duplicate gene loss); as a result, it presents to us an opportunity for PP2C genes to study its evolutionary implications. In this study, all the PP2C genes through various approaches were isolated from *Arabidopsis* and *B. rapa* and their phylogenetic relationships were conducted to categorize them into multiple subgroups. In addition, we comparatively analyzed PP2C genes from ten representative plant species, including one of the earliest angiosperm plant *Amborella trichopoda*, *Populus trichocarpa*, *Vitis vinifera*, *Capsella rubella*, *Citrus sinensis*, *Carica papaya*, *Solanum lycopersicum*, *Fragaria vesca*, *Arabidopsis lyrata*, and a bryophyte (*Physcomitrella patens*), the earliest sequenced land plant [28].

We further compared the PP2C genes between *B. rapa* and *Arabidopsis*, to explore and identify both shared and specific subgroups. Following the gene structure organization analysis, conserved protein motifs, cis-elements, and interaction network, we traced paralogous gene pairs and their evolutionary divergence that likely resulted in the expansion of the PP2C gene family. To shed a light of some critical BraPP2C genes on their associated indigenous functional role were further exposed to heat, cold, ABA-signaling, and drought stress conditions. Additionally, the transcriptional profiling of the BraPP2C genes for various tissues and qRT-PCR analysis of 15 paralogous gene pairs were analyzed

and compared. In both eukaryotes and prokaryotes, the PPs are vital in both diverse signaling pathways and kinase-counteracting components. Indeed, for phosphatases, most of the functionally characterized literatures have been studied in *Arabidopsis*, and minimal studies have been done in crop plants. Therefore, to our knowledge, this is the first systemic reported genome-wide and transcriptional profiling of the PP2C genes in *B. rapa*, and it is affirmative to carry out a comprehensive study to understand the regulation of phosphatases in *B. rapa* during stress and development.

2. Materials and Methods

2.1. Data Resources for Sequence Retrieval. For identification of PP2C genes in *Brassica rapa*, we utilized the Plaza 4.0 database (<https://bioinformatics.psb.ugent.be/plaza/>) with the help of InterPro PP2C domain “IPR001932”. The *B. rapa* genome sequences were downloaded from BRAD (<http://brassicadb.org/brad/>) [29], and *A. thaliana* sequences were retrieved from TAIR (<http://www.arabidopsis.org/>). The sequences of others species were downloaded from Phytozome v12.1.6 (<https://phytozome.jgi.doe.gov/pz/portal.html>) [30]. The domains of obtained BraPP2C proteins were also further verified using NCBI-Conserved Domain database (<https://www.ncbi.nlm.nih.gov/Structure/cdd/wrpsb.cgi>) search program and SMART databases (<http://smart.embl-heidelberg.de/>) [31]. Those proteins which lack PP2C domain were removed from further analysis. In addition, protein sequences that were found with obvious errors in their gene length or having less than 100 lengths were eliminated.

2.2. Multiple Sequence Alignment and Phylogenetic Analysis. The amino acid sequences of the BraPP2C proteins were used for further investigation, and multiple sequence alignment was performed by MUSCLE [32] using MEGA 7 software with the default options [33]. The phylogenetic trees were constructed using the maximum likelihood (ML) method. To determine the reliability of resulting tree, bootstrap values of 1000 replications were performed with the Jones, Taylor, and Thornton amino acid substitution model (JTT model), while keeping the other parameters as a default.

2.3. Calculation of the K_a/K_s for BraPP2C Paralogous Gene Pairs. The K_a/K_s ratios were calculated for BraPP2C paralogous gene pairs using MEGA 7.0 [33]. The divergence time among the paralog pairs was calculated with the following formula: $T = Ks/2r$, where Ks represents the synonymous substitutions per site and r is the rate of divergence. For dicotyledonous plants, specifically *B. rapa*, the assumption is 1.5 synonymous substitutions per site of 10^8 years [34].

2.4. Conserved Motifs, Exon-Intron Structure Analysis, and Physicochemical Parameters of BraPP2C Proteins. Conserved motif scanning of BraPP2C proteins was carried out through local MEME Suite Version 5.0.2. For this purpose, parameter settings were calibrated as follows: maximum number of motifs 10, with a minimum width of 100 and a maximum of 120. The other parameters were set as default [35]. For

the exon-intron structure, we used the Gene Structure Display Server (GSDS 2.0) (<http://gsds.cbi.pku.edu.cn>) [36]. The physicochemical properties of the proteins, including molecular weight (MW), isoelectric points (pI), and GRAVY values for each gene, were calculated using the ExPASy PROTPARAM tools (<http://web.expasy.org/protparam/>). The subcellular localization was predicted using the WOLF PSORT (<https://wolfpsort.hgc.jp/>) website.

2.5. Cis-Elements Predictions and Interaction Network of BraPP2C. Every BraPP2C promoter sequence (selected as 2000 upstream bp) was imported in Generic File Format (GFF) file from the *B. rapa* genome. Then, PlantCARE database (<http://bioinformatics.psb.ugent.be/webtools/plantcare/html/>) [37] was utilized to identify the cis-regulatory elements for promoters of each gene. The interaction network of BraPP2C proteins was constructed with the help of STRING software (<https://string-db.org/>).

2.6. Chromosomal Location and Paralogous Gene Pairs Identification of BraPP2C. The chromosomal location BraPP2C genes were illustrated from top to bottom concerning their position in the genome annotation using Mapchart [38]. For synteny gene analysis, the relationships were verified between the homologs of *A. thaliana* and subgenomes of *B. rapa* (LF, MF1, and MF2) obtained from BRAD (<http://brassicadb.org/brad/searchSynteny.php>). Furthermore, the paralogous genes were identified either selecting genes pair between LF1 and MF1 or MF1 and MF2 subgenomes of *Brassica rapa*, respectively. Circos program was applied to demonstrate the syntenic relationships among the chromosomes of *B. rapa* and *A. thaliana* [39].

2.7. Pearson Correlation Analyses. Pearson correlation (PCC) analysis was performed with the help of Excel 2013 to evaluate the PCC values of the RNA-seq and the paralogous genes that were used for qRT-PCR [40].

2.8. Plant Material and Treatments. In the present study, the germinated seeds of Chinese cabbage (Chiifu-401-42) were grown in plastic pots containing a mixture of soil and vermiculite (3:1). The pots were then placed in an artificial growth chamber for five weeks. The growth conditions were as follows: the temperature was set to 24/16°C, the photoperiod was 16/8 h, and the relative humidity was 65–70%. Specific treatments were provided to the seedlings as follows: for heat and cold treatments, seedlings were exposed to 38°C and 4°C, respectively. For ABA and drought stress treatment, the seedlings were cultured in a nutrient solution medium with 100 µM and 6000 PEG (w/v). All treatments were carried out in continuous time intervals of 1, 6, and 12 h, respectively, with biological triplicates. After that leaf samples were quickly frozen in liquid nitrogen and stored at –80°C for further use.

2.9. RNA Isolation and Transcriptional Profiling of BraPP2C under Various Stresses. Total RNA was isolated from the treated frozen leaves with Trizol (Invitrogen) following the

manufacturer's instructions. RNA was reverse-transcribed into cDNA using the Primer Script RT reagent kit (TAKARA, Dalian China) according to their instructions. Specific primers were designed using Becan Designer 7.9 and are presented in Table S1. In order to check the specificity of the primers, we used the BLAST tool against the *B. rapa* genome for confirmation. RT-PCR was performed according to the guidelines of previous studies [41]. Relative fold expression was calculated with the comparative Ct-method. The expression patterns of all BraPP2C genes were analyzed based on a previous study [42]. Furthermore, gene expression levels were quantified by FPKM (fragments per kilobase of transcript per million fragments mapped) values, and heat maps were generated using an online omicshares tool (<http://www.omicshare.com/>).

3. Results

3.1. Characterization of BraPP2C Gene Family Members. In the present study, we identified 131 putative BraPP2C genes in *B. rapa* genome and were denoted as BraPP2C1 to BraPP2C131, based on phylogenetic analysis and their orthologous positions with *Arabidopsis*. The physicochemical feature of the BraPP2C proteins along with some key information of all the identified BraPP2C is provided in Table S2. The results of sequence analysis exhibited that the length of the BraPP2C proteins varied with a ranged from 102 (BraPP2C1) to 1465 (BraPP2C63) bp, with an average of 412.37 (aa). The detailed information of BraPP2C, including molecular weights (MW), theoretical isoelectric point (pI), the grand average of hydropathicity (GRAVY), and exon number ranged from 11.76 (BraPP2C27) to 160.43 (BraPP2C63) kDa, -0.777 (BraPP2C59) to 0.001 (BraPP2C41), 4.36 (BraPP2C85) to 9.37 (BraPP2C117), and 1 (BraPP2C73) to 21 (BraPP2C21), respectively. The significant variations reflect their functional diversity among BraPP2C, while the negative value of GRAVY further demonstrated that these proteins were unstable and hydrophilic in nature. Moreover, we analyzed the values of pI, GRAVY, and exon number, as shown in (Supplementary Figures 1, 2, and 3), respectively. The subcellular localization was predicated, and results proposed that most of the BraPP2C proteins were localized in mitochondria, cytoplasm, nuclei, chloroplasts, plasma membranes, endoplasmic reticulum, and vacuoles (Table S2). The gene structure analysis of BraPP2C revealed that the exon number of each BraPP2C gene ranged dramatically from 1 to 19 (Figure S4). Majority of BraPP2C genes consisted of only one exon; the rest of others showed significant variations, whereas BraPP2C32 possesses 19 exons, suggesting that both exon loss and gain occurred in BraPP2C gene family. Alongside, we systematically discovered the distribution of conserved motifs and their logos by online MEME server. A total of ten different consensus motifs were obtained in all of the BraPP2C proteins, and their distribution patterns are presented in Figures S5 and S6. Hence, during the evolutionary process, the BraPP2C demonstrated the extreme conservation within subgroups.

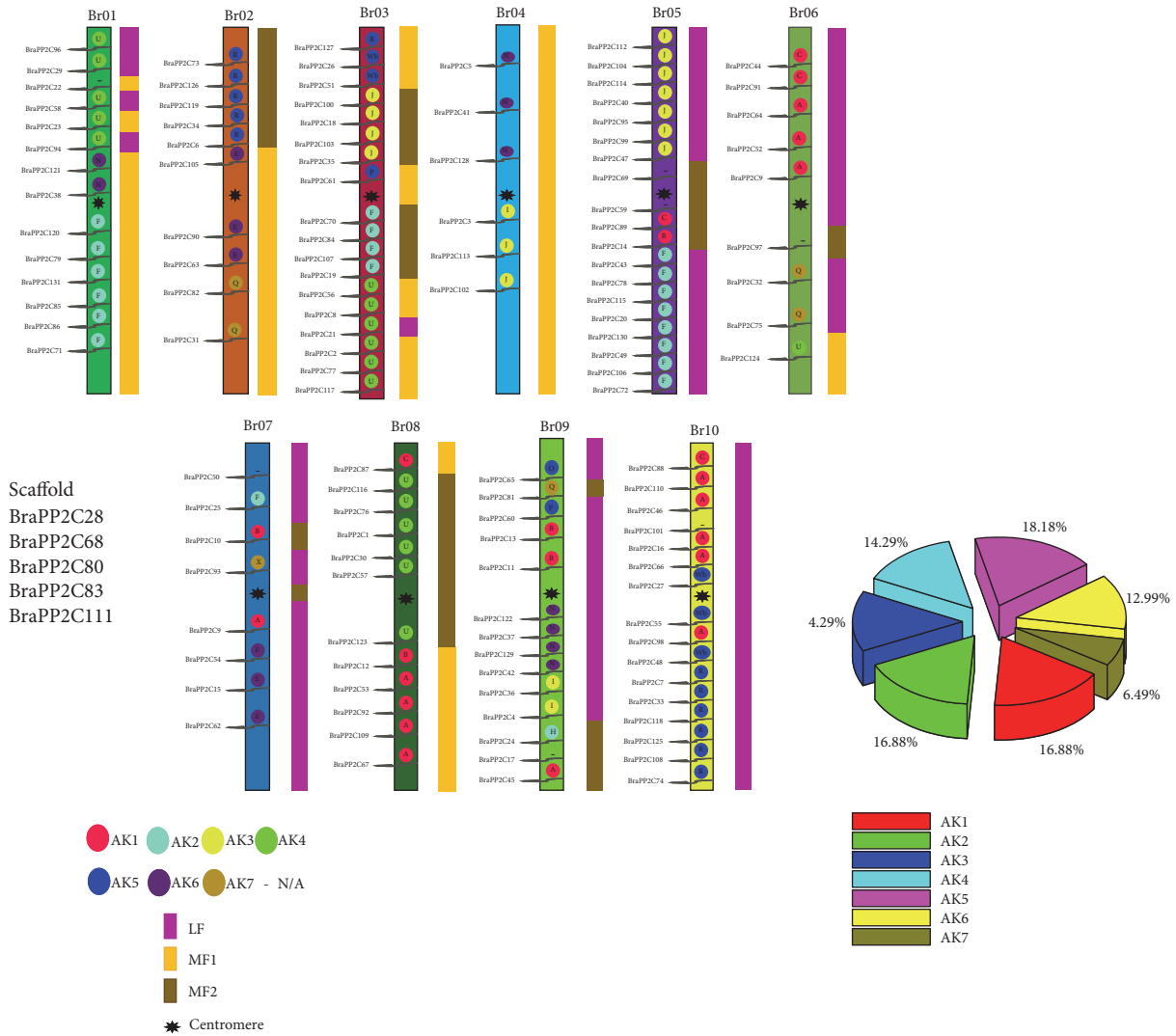


FIGURE 1: Chromosome locations of PP2C were obtained from the GFF file and displayed using Mapchart. The ancestral karyotypes are marked in different colors.

3.2. Chromosome Distribution and Syntenic Gene Collinearity Analysis. The physical chromosomal locations on *B. rapa*, across all ten chromosomes (Br01–Br10), were determined by the Mapchart software. The 126 *BraPP2C* genes were dispersed across all ten chromosomes, ranging from 7 to 19 per chromosome, out of which 5 genes were found on the scaffold region (Figure 1). On each chromosome, the number of BraPP2C varies drastically; the largest number of BraPP2C family members was observed on chromosomes Br05 with 19 genes, followed by Br03 with 18 genes, whereas the least numbers were revealed on chromosomes Br04 and Br07; each contains 7 genes, respectively. Among these BraPP2C, five genes (*BraPP2C28*, *BraPP2C68*, *BraPP2C80*, *BraPP2C83*, and *BraPP2C111*) were present on the genomic scaffold. These results suggest the uneven distribution patterns of BraPP2C across ten different chromosomes. Based on a previously reported study, 24 ancestral genomic blocks (GBs) were reconstructed [27]. The color-coding for these block were slightly modified according to their position in a proposed

ancestral karyotype (AK1-07) [27, 43]. The majority (18.18%) of *BraPP2C* genes were clustered in the AK5 region, followed by AK1 and AK2 (16.88%), whereas minimum genes (6.49%) were clustered in AK7 region (Figure 1).

The collinear relationships of the *PP2C* gene pairs between *Arabidopsis* and *B. rapa* are shown in Figure 2. Based on three subgenomes of *B. rapa*, LF contains more (42.86%) *BraPP2C* genes than the MF1 (32.77%) and MF2 (24.37%) subgenomes (Figure S7). In addition, the divergence time of the 29 paralogous pairs was estimated with the help of MEGA7.0 software by calculating the synonymous (K_s) and nonsynonymous substitution rates (K_a). The results proposed that most of the *BraPP2C* gene pairs represented less than 1.00 (K_a/K_s) ratios, suggesting the purifying selection of these genes except three pairs (*BraPP2C58-BraPP2C56*, *BraPP2C85-BraPP2C86*, and *BraPP2C125-BraPP2C127*) showed higher than 1.00 values, indicating positive selection. To estimate the divergence among these *BraPP2C* paralogous gene pairs, we calculated

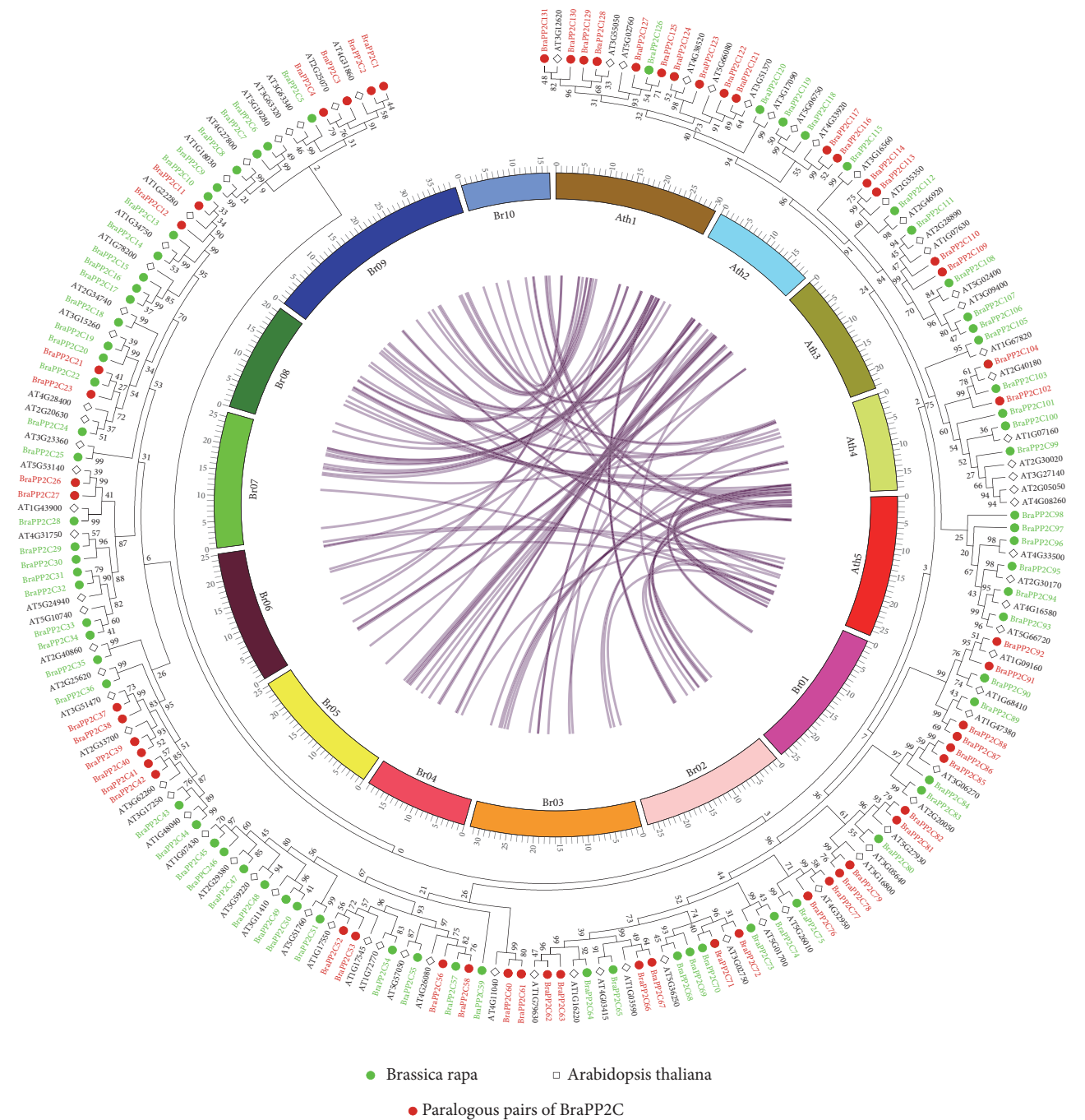


FIGURE 2: Phylogenetic relationship of PP2C between *B. rapa* and *A. thaliana*. The phylogenetic tree was constructed by MEGA 7 using the Maximum Likelihood Method (1000 bootstrap). Genes of PP2C paralog pairs are marked with red color. The collinear correlation for all genes of PP2C is displayed between *B. rapa* and *A. thaliana*. The 10 Chinese cabbage chromosomes (Br01–Br10) and five *A. thaliana* chromosomes (AT01–AT05) are shown in different random colors. The illustration was drawn using Circos Software.

the values of K_s (Figure S8 and Table S3). The average divergence time among these paralogous is 12.37 MYA, suggesting that BraPP2C divergence occurred along with the *Arabidopsis* (9.6–16.1 MYA) [6].

3.3. Phylogenetic Analysis of BraPP2C Gene and Copy Number Variations/Gene Retention. To provide an overview of the

evolutionary relationships among subgroup member of PP2C between *B. rapa* and *A. thaliana*, a comparative phylogenetic tree was constructed using MEGA7.0 software by adapting the maximum likelihood approach with 1000 bootstrap replications (Figure S9). The phylogenetic tree and domain composition further subcategorized the PP2C into thirteen subgroups: subgroup A-L and one unclassified. The results

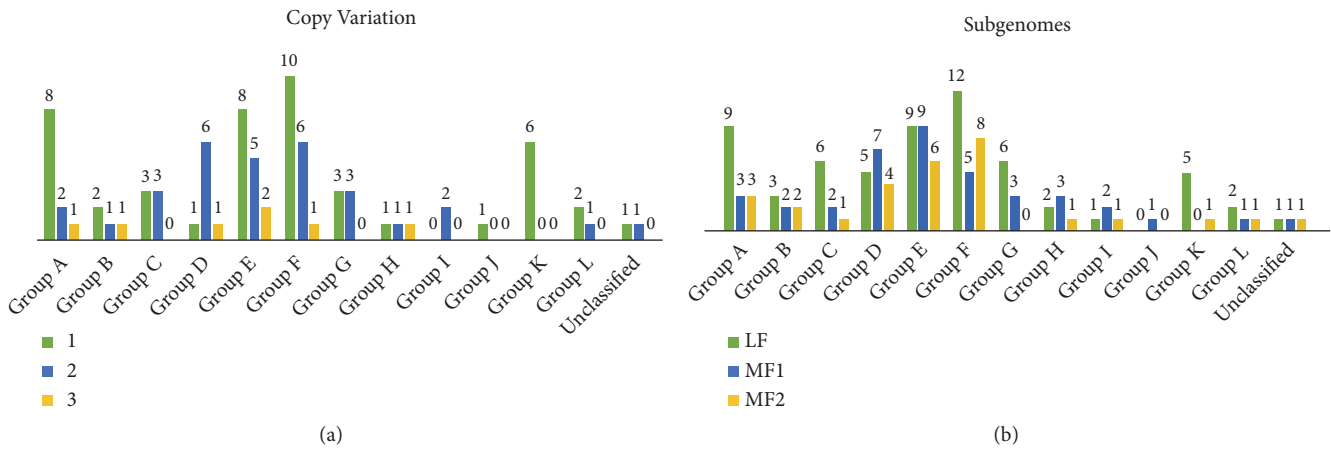


FIGURE 3: (a) and (b) The copy number variation and the ratio of PP2C among three subgenomes of *B. rapa*.

of the tree were consistent with the previously reported studies in *Arabidopsis* and rice [44]. Moreover, most of the BraPP2C clustered together with those from *Arabidopsis*, while 128 out of 131 BraPP2C genes are further distributed among twelve subfamilies (A-L), and the remaining three (*BraPP2C35*, *BraPP2C60*, and *BraPP261*) BraPP2C genes cannot be grouped into any subfamilies and were categorized as unclassified. Most of the PP2C members were found in two subgroups E and F each with 25 genes, respectively, as compared to other subgroups. The complete overview and the distribution patterns among *Brassica rapa* and various ten species are described in Table 1.

Following the similar method, we also constructed a phylogenetic tree to compare the relationships of PP2C among *Arabidopsis*, *Amborella trichopoda*, *Vitis vinifera*, *Populus trichocarpa*, *Capsella rubella*, *Citrus sinensis*, *Carica papaya*, *Solanum lycopersicum*, *Fragaria vesca*, *Arabidopsis lyrata*, and a bryophyte (*Physcomitrella patens*). Intriguingly, we observed diversification within subgroups of almost every species, which might indicate that different species used for tree topologies lead to slight variations (Supplementary Figures S10 and S11).

The copy number of variation and gene retention in *B. rapa* and *A. thaliana* during a *Brassica*-specific WGT event was also investigated. Meanwhile, *B. rapa* genome is based on three subgenomes and shares the same diploid ancestor with *A. thaliana* [26]. For each gene, we identified its syntenic paralogous and orthologous pairs by utilizing the *Brassica rapa* database (BRAD) (Table S4). In particular, we counted the retention of BraPP2C genes based on subgroups and by calculating the number of gene copies among three subgenomes. It was observed that the majority of genes were found either in a single, double or triple copy. Interestingly, for subgroup E, only two pairs were found with three copies and 6 each pair were identified for subgroup D and F with two copies, whereas the remaining did not show any copy variation and group F also shows the most number (25) of genes based on subgenomes comparison (Figures 3(a) and 3(b)). Our findings also revealed that gene retention exhibited almost with varied results, 15/15 subgroup A, 7/8 subgroup B,

9/9 subgroup C, 16/17 subgroup D, 24/25 subgroup E, 24/25 subgroup F, 9/9 subgroup G, 6/6 subgroup H, 4/4 subgroup I, 1/1 subgroup J, 6/7 subgroup K, 4/4 subgroup L, and 3/3 unclassified, respectively (Table S4).

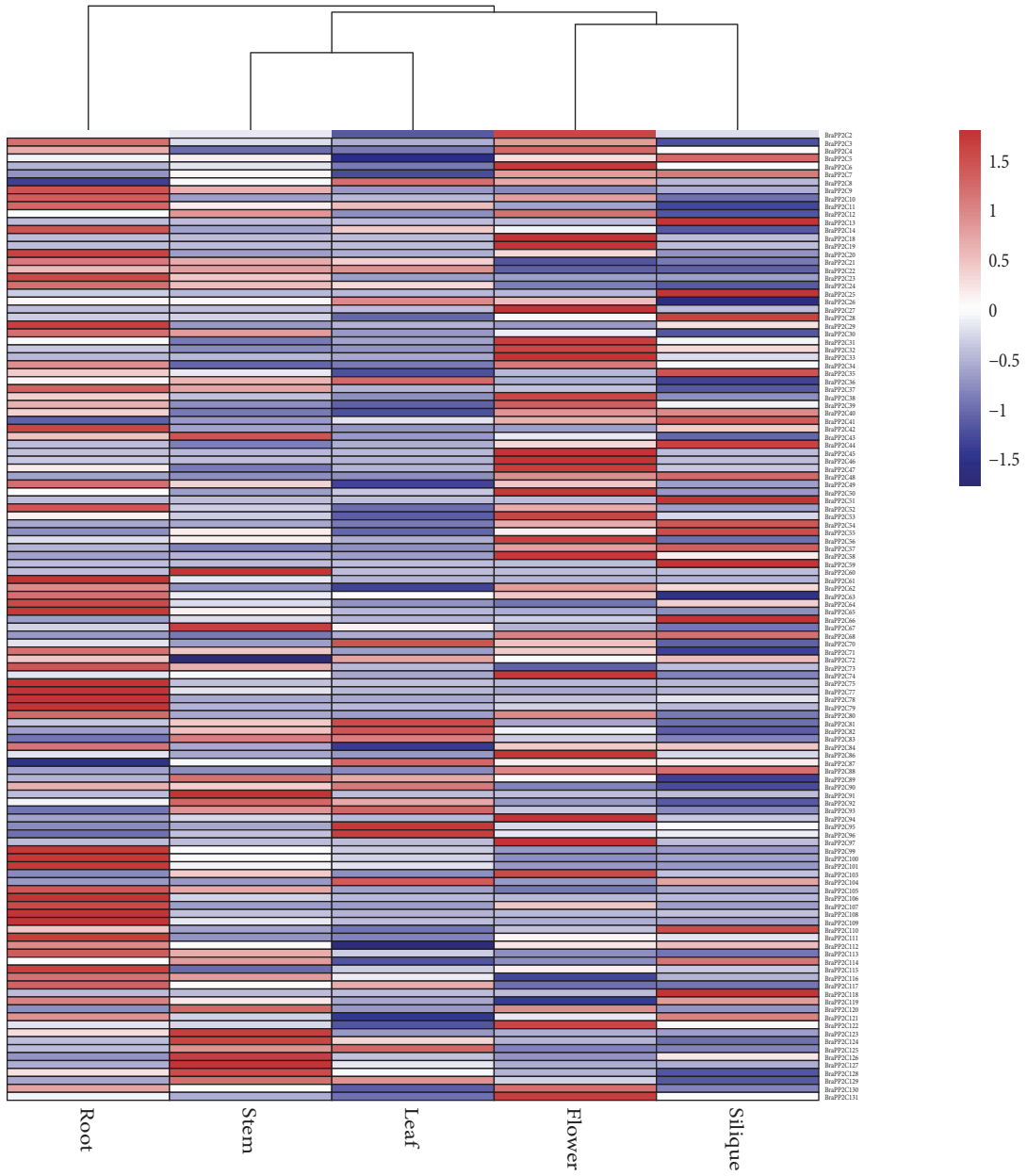
3.4. Expression Pattern of BraPP2C in Various Tissues and the Correlation Networking Analysis of Paralogous Pairs. To address the divergence and possible involvement of BraPP2C genes in *B. rapa* reflected in their growth and development. The trends of transcriptional profiles across five various tissues (roots, stems, leaves, flowers, and siliques) were determined based on previously published RNA-sequence data [45]. In this study, FPKM values were selected to represent BraPP2C genes expression and heat maps were constructed to demonstrate the relative transcriptional profiling of 131 BraPP2C genes in various tissues. The results displayed high alterations in expression profiling among various subgroups members of PP2C in *B. rapa*. Among 131 BraPP2C genes, *BraPP2C1*, *BraPP2C15*, *BraPP2C16*, *BraPP2C17*, *BraPP2C69*, *BraPP2C76*, *BraPP2C85*, and *BraPP2C98* showed no expression and *BraPP2C*, *BraPP2C18-19*, *BraPP2C27*, *BraPP2C51*, *BraPP2C59-60*, *BraPP2C91*, *BraPP2C97*, and *BraPP2C118* showed slight expression in one of any tissues (Figure 4(a); Table S5). The rest of the PP2C were expressed in at least two or more organs. However, few members of BraPP2C were specifically observed to be selectively expressed in tissue-specific clustering (Figure 4(b)), such that four of each gene in flowers and siliques were found and two of them were observed in the stem. Intriguingly, these genes indicated a possible role in organ development of *B. rapa*.

We next investigated the expression trends among 29 paralogous pairs for PP2C genes along with calculated their Pearson's correlation coefficient values (Figure S12A; Table S6). These paralogous pairs exhibited significant variation in various tissues. The results showed that more than 20 pairs were highly expressed in all tissues and 13 pairs with higher PCC values (>0.6). Meanwhile, four pairs (*BraPP2C2*_*BraPP2C1*, *BraPP2C77*_*BraPP2C76*, *BraPP2C85*_*BraPP2C86*, and *BraPP2C104*_*BraPP2C102*) showed no correlation values, and four pairs (*BraPP2C42*_*BraPP2C41*,

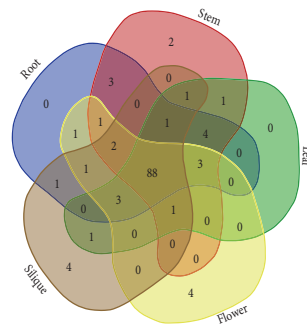
TABLE 1: The distribution of PP2C genes family is various species.

Subgroup of PP2C	BraPP2C	AthPP2C	AtrPP2C	CrPP2C	CpPP2C	FvPP2C	PpPP2C	VvPP2C	SIPP2C	AIPP2C	CsPP2C	PtPP2C
A	15	10	2	10	4	6	0	5	6	11	11	11
B	7	6	1	4	3	1	0	0	3	2	6	5
C	10	7	4	8	3	4	0	5	5	6	18	13
D	16	9	4	11	6	8	4	9	12	9	15	29
E	25	12	4	16	6	8	14	5	9	13	18	26
F	25	13	6	16	3	4	0	8	8	12	23	25
G	9	6	3	8	2	7	0	5	6	6	12	14
H	6	3	3	4	3	3	28	3	5	3	3	15
I	4	2	0	3	2	1	19	2	3	2	10	4
J	1	2	0	1	0	0	0	0	1	1	0	1
K	6	3	1	4	3	3	0	3	2	4	5	7
L	4	0	2	1	3	1	0	2	2	2	6	4
Unclassified	3	3	1	2	0	1	0	1	1	2	0	2

* BraPP2C= *Brassica rapa*, AthPP2C= *Arabidopsis thaliana*, AtrPP2C= *Amborella trichopoda*, CrPP2C= *Capsella rubella*, CpPP2C= *Carica papaya*, FvPP2C= *Fragaria vesca*, PpPP2C= *Physcomitrella patens*, VvPP2C= *Vitis vinifera*, SIPP2C= *Solanum lycopersicum*, AIPP2C= *Arabidopsis lyrata*, CsPP2C= *Citrus sinensis*, and PPP2C= *Populus trichocarpa*.



(a)



(b)

FIGURE 4: (a) and (b) Heatmap of expression profiles (in log₂-based FPKM) for PP2C in the five various tissues: root, stem, leaf, flower, and silique. The expression levels are indicated by the color bar. (b). Venn diagram analysis of the tissue expression of PP2C.

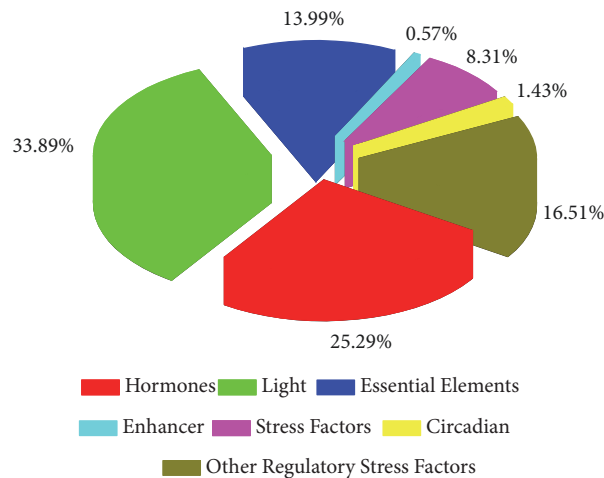


FIGURE 5: The ratios of different cis-elements.

BraPP2C60_BraPP2C61, BraPP2C66_BraPP2C67, and BraPP2C72_BraPP2C71) exhibited a negative correlation. Also, the clustering image did not show any variability among various tissues (Figure S12B). Intriguingly, these results indicated that a possible involvement of *BraPP2C* genes during growth by showing an overlapping in expression pattern might be the basis of crosstalk for signal transductions pathways and plant improvements. Despite the divergence in the expression profiles for BraPP2C between paralogous pairs, suggesting that after duplication in the evolutionary process, some of these pairs may acquire new functions.

3.5. Analysis of Putative Regulatory Cis-Element in BraPP2C and Coregulatory Expression Network Analysis. The cis-elements in promoter regions are closely associated with gene transcription, and their response to stress as gene expression is mediated through interaction between cis-regulatory elements and its cognate transcription factors [46]. Therefore, 2.0 kb upstream sequences were downloaded from *B. rapa* database and analyzed using the PlantCARE database [37]. In the promoter regions of BraPP2C, we identified a total of 7 common cis-regulatory elements (Figure 5 and Table S7). The *skn-1* motif was responsive for endosperm expression. MBS is deliberated as an MYB binding site, which is involved in drought-inducibility. DRE and LTR are cis-acting elements that are known to control functions during adverse conditions, such as dehydration, chilling, and salt stress. Few of the cis-regulatory elements were actively receptive against hormonal stresses, such as ethylene, gibberellin, auxin, and salicylic acid. Circadian cis-regulatory element regulates the circadian rhythm of the plant system. As shown in Figure 5, the participation of hormones, light, essential elements, enhancers, stress factors, circadian, and other regulatory stress factors was higher in *BraPP2C* genes. As a consequence, the data suggests the presence of a large number of conserved cis-regulatory elements that are crucial in mediating responses to adverse environmental stresses or stress-related hormones. Though, to prove such assumptions, a further validation step is required. Moreover, these results

highlighted the stress-responsive disposition of *BraPP2C* genes.

For functional studies, gene expression profiling provides valuable clues, many PP2C have been implicated in plants against abiotic stress conditions, and the presence of stress-responsive cis-elements in the promoter region further suggests their possible involvement in *B. rapa* response to different environmental stimuli. Therefore, we investigated the transcriptional profiles of 15 PP2C paralogous gene pairs of *B. rapa* subjected to cold, heat, PEG, and ABA treatments using qRT-PCR analysis (Figure 6; Table S8). Our results indicated that the *BraPP2C* genes showed diversity in their expression level against four various treatments. Interestingly, the expression patterns of some genes induced rapidly when exposed to ABA and drought application. In contrary, some genes were highly upregulated or downregulated by either of one or two stresses. Under heat treatment, a dominant portion of the *BraPP2C* genes showed highly fluctuated transcriptional profiling levels, including 30% upregulated and 70% downregulated genes. The exposure of *B. rapa* to cold stress resulted in approximately 54% of upregulated genes. The transcriptional level was significantly increased under ABA and drought treatments; most of the genes were highly 57% and 64% expressed, respectively. Taken together, the diverse expression pattern of *BraPP2C* genes may suggest various roles after exposure to abiotic and hormone stress conditions. To understand the correlation and coregulatory network among these paralogous pairs, we calculated Pearson's correlation coefficient (PCC) values based on their relative expression data. For the correlation network, we make three categories concerning PCC values, such as more than 0.6 (Highly Positive), less than 0.5 but greater than 0 (Mild Positive), and negative values with (Negative) correlation (Figure 7 and Table S9). Heat and drought stress showed highly positive and closer relationship by showing (11) PCC values each, while cold stress was found with a high number of negative (6) PCC values, suggesting its different nature among the paralogous pairs of *BraPP2C* genes.

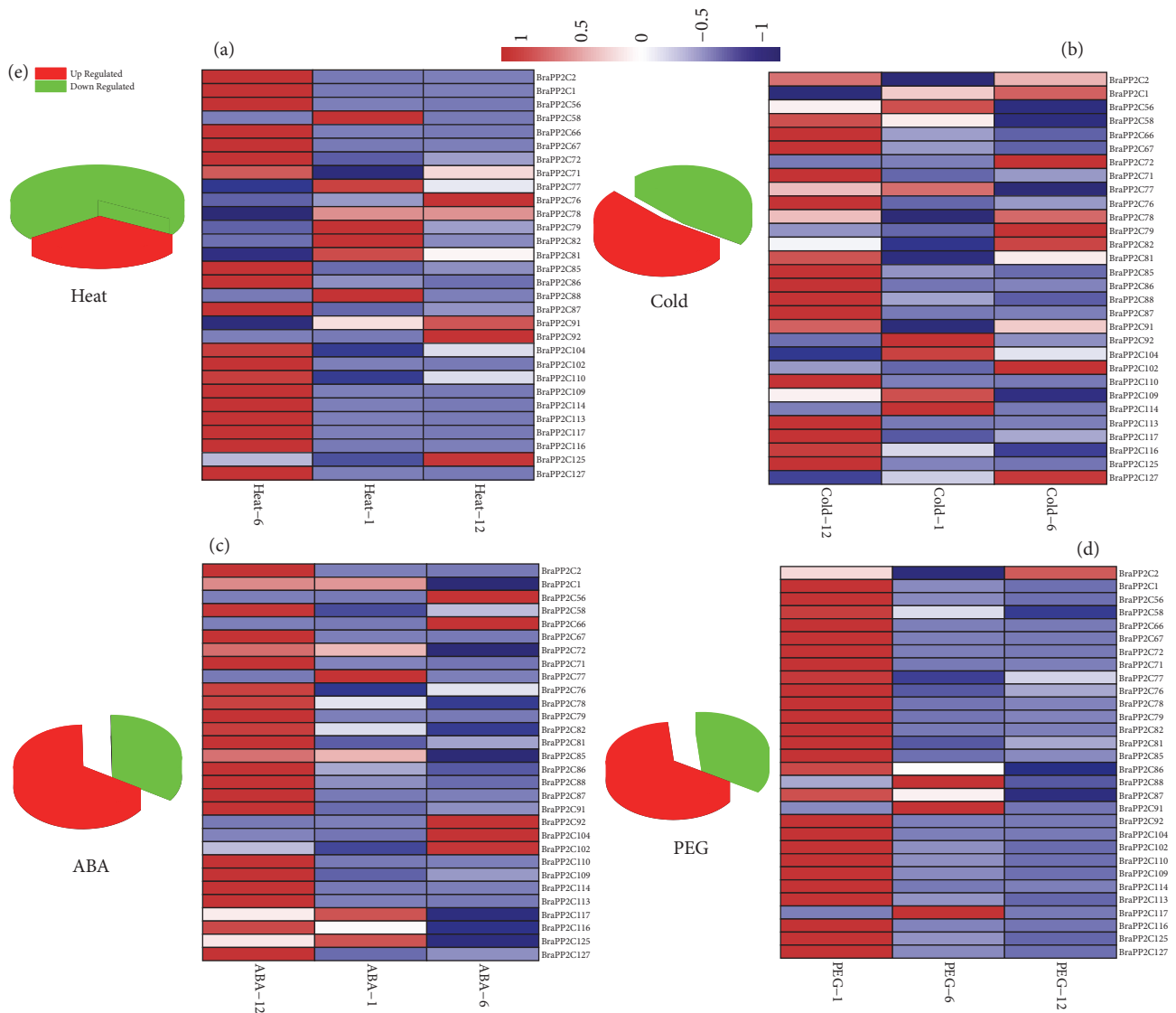


FIGURE 6: Expression analysis of *PP2C* genes under heat, cold, ABA, and drought stress treatments in *B. rapa*.

Moreover, we examined the interaction network of BraPP2C proteins with the help of STRING software. The BraPP2C proteins were highly correlated with each other in the interaction network. As shown in Figure S13, most of the subgroups of BraPP2C exhibited a dense network when compared with each other. Most of the proteins were highly located in the center and only a few of them did not interact with others, which indicated the complexity of the interaction network. Therefore, this PP2C may involve in the regulation of many downstream/upstream gene factors by playing a crucial role in fundamental molecular mechanisms of plants.

4. Discussion

In the plant kingdom, the *PP2C* gene family is considered as one of the largest families and has been characterized in several crop species by utilizing bioinformatics strategies.

Previously, various members of *PP2C* genes were identified in maize [47], rice [48], *Arabidopsis* [49], hot pepper [50], banana [51], and *Brachypodium distachyon* [3]. In this study, a comprehensive genome-wide analysis was performed, including gene identification, phylogenetic relationships, evolutionary analysis, chromosomal localizations, conserved domain motifs, and gene structure organization analysis. In addition, gene expression patterns of some key *BraPP2C* genes were also determined under heat, cold, ABA, and drought stresses. Herein, a total of 131 *BraPP2C* genes were identified. The *PP2C* genes were further categorized into 11, 12, or 13 subfamilies depending on the plant species according to evolutionary analysis. The proportion of PP2C members was much higher as compared to lower plants. For this reason, we further isolated the *PP2C* genes in ten various species and calculated their number as well, such as *Amborella trichopoda* which contains 31 *PP2C* genes, *Vitis vinifera* (48), *Populus trichocarpa* (155), *Capsella rubella*

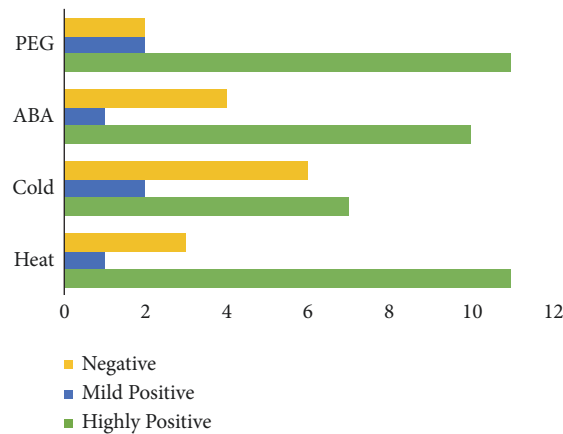


FIGURE 7: Pearson's correlation coefficient (PCC) values under response to heat, cold, ABA, and drought treatments.

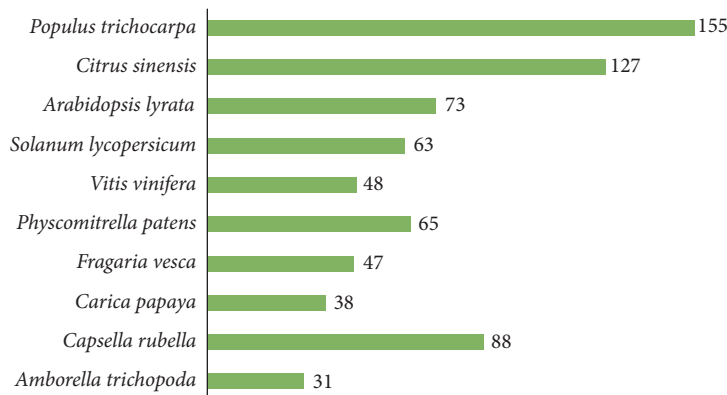


FIGURE 8: The proportion of PP2C genes among various species.

(88), *Citrus sinensis* (127), *Carica papaya* (38), *Solanum lycopersicum* (63), *Fragaria vesca* (47), *Arabidopsis lyrata* (73), and *Physcomitrella patens* (65) as shown in Figure 8 and Table S10. As a consequence, a high degree of divergence was observed between PP2C genes from lower plants to higher plants, suggesting that it may be correlated with the complex adaptation to environmental stimuli [52]. Overall, the number of PP2C genes has remained distinct in each investigated species, proposing that variation in evolutionary patterns is occurring, due to gradual changes in rounds of whole-genome duplication (WGD) and subsequent gene losses/gains by natural selection constraints.

Notably, gene duplication, being the predominant influencing force for broad expansion of the gene family, upgrades its biological function and evolutionary processes [53]. Thus, to study gene family fractionation, a linkage between them and their morphotypes, *B. rapa* is an excellent model plant because it has experienced WGD and an additional WGT event [26, 27]. Considering the importance of evolutionary analysis, most of the angiosperms have undergone either one or multiple polyploidization events [54–56]. As a result, for duplicated genes, it provides opportunities to diverge in various evolutionary ways. Subsequently, each of these genes experienced one of the following three evolutionary fates:

subfunctionalization (the ancestral function is subdivided between copies), neofunctionalization (one copy acquires a new function), or nonfunctionalization (one copy becomes unexpressed or functionless) [57]. Furthermore, we predicted the pressure of natural selection by calculating the synonymous (K_s) and nonsynonymous substitution rates (K_a) and were identified by the MEGA7.0 program. Also, during evolutionary processes and expansion of genes family, these indicators are used for the selection history. If the value of K_a/K_s is lower than 1.00, it represents purifying selection, $K_a/K_s = 1$ means neutral selection, and $K_a/K_s > 1$ means positive selection [7]. In our work, we estimated the divergence time among the 29 paralogous pairs of *BraPP2C* genes. Majority of the *BraPP2C* paralogous pairs showed less than 1.00 K_a/K_s ratios, speculating the purifying selection of these paralogous pairs. On the other hand, only three pairs show more than 1.00 values, suggesting positive selection. Moreover, the divergence time of these paralogous pairs of the *BraPP2C* genes ranged from 0.03 to 0.84 (K_s values) with an average mean divergence of 12.37 (MYA). Notably, the divergence time of *BraPP2C* paralogous gene pairs was 12.37 MYA, which further intimates that their divergence occurred during the *Brassica* and *Arabidopsis* duplication (9.6–16.1 MYA) [7].

Plants productivity encounters a severe threat by maintaining the optimum crop production, due to a wide range of environmental challenges. Surrounded by various stress factors, such as heat, cold, ABA, and drought represent the major constraint for agricultural crop production. In regulating plant tolerance to multiple abiotic stress factor a well-known hormone, ABA plays a crucial role. However, in *B. rapa*, the role of the core components of ABA signaling against PP2C genes in responding to various stress conditions is mainly obscure. Specifically, various members of PP2C group A (ABI1, ABI2, HABI1, HAB2, AHG1, and PP2CA) resulted into increase the ABA sensitivity after double and triple mutation, suggesting the diverse outcome in ABA signaling [17, 58–61]. Previous studies reported that PP2C regulates positively against salt tolerance in *Arabidopsis* and drought in peach [62, 63] to modulate the stress severity. In *Arabidopsis*, two members of PP2C genes were responded differently, such as AP2C1 expression was strongly induced by cold, drought, and wounding, but AP2C2 was slightly influenced by these treatments [64]. These findings highlighted the significance of critical members of the PP2C gene family in the model plant *Arabidopsis*, but their specific functions may be significantly varied in *B. rapa*. In the present study, various PP2C genes showed high striking transcriptional changes followed by heat, cold, ABA, and drought stresses, indicating that some of these genes might be pivotal to stress tolerance in *B. rapa*. Some of the recent advances in the functional dissection of PP2C candidate genes uncovered their importance in the life cycle of *Arabidopsis* and rice [48, 65], although their associated roles in *B. rapa* are mostly unnoticed. Aiming for achieving gene expression patterns in various growth phases of *BraPP2C*, we utilized the previously reported RNA-sequence data and analyzed the expression profile of PP2C genes in various tissues (root, stem, leaf, flower, and silique). Results demonstrated that most of the *BraPP2C* genes showed a varying response to multiple tissues and some of the genes were highly expressed in all the tissues or in some cases; it was negative. However, few genes have shown tissue-specific expression, such that four genes were commonly identified in roots and flower and two of them were expressed in the stem as well, intimating their importance in plant development. In addition, gene family expansion and the duplication types in the neofunctionalization or subfunctionalization models are mainly associated with tissue expression divergence [66–68]. In *BraPP2C* genes, we also explored the promoter regions for identification of common conserved *cis*-regulatory elements. As to further elucidate the predicated and the possible functions of *BraPP2C* genes in transcriptional regulation, the result represented significant variation among *BraPP2C* genes and was mostly responsive to both biotic-abiotic factors and plant hormones stresses.

It is indispensable to perceive the fundamental molecular mechanisms of plants for the adaptability of stress tolerance and enhancement in crop yield under adverse stress conditions. Therefore, our outcome of the study provides valuable insight and will serve as a basis for exploring the pivotal role of *BraPP2C* genes in the plant against abiotic stresses. It may also assist to reveal the potential functions of *BraPP2C* genes in response to both abiotic and hormone stress conditions.

5. Conclusions

In this study, we identified a total of 131 *BraPP2C* gene family members by genome-wide analysis in *Brassica rapa* genome. A comprehensive analysis was carried out to study the phylogenetic relationships, evolutionary analysis, exon-intron organization, chromosomal localization, protein structural features, interaction network analysis, and conserved motifs. According to the phylogenetic relationships, the *BraPP2C* were classified into thirteen subgroups. Moreover, transcriptional profiling revealed *BraPP2C* candidate genes might have participated in the plant stress tolerance particularly to heat, cold, ABA, and drought stress. These *BraPP2C* genes can be utilized to facilitate by functionally characterize them, laying the foundation for elucidating their specific regulatory mechanisms and ultimately applying them in molecular breeding programs of this important vegetable crop. In summary, the integration of our findings has provided a novel insight and unique features of *BraPP2C* genes that may play a potential role in mediating regulation of signal transduction and particularly under various stress conditions.

Data Availability

The data used to support the findings of this study are available in this manuscript and supporting materials.

Conflicts of Interest

The authors declare that the research was conducted in the absence of any commercial or financial relationships that could be construed potential conflicts of interest.

Authors' Contributions

Nadeem Khan, Han Ke, and Chun-mei Hu conceived and designed the experiments. Nadeem Khan, Muhammad Salman Haider, and Emal Naseri performed the experiments. Nadeem Khan analyzed the data and wrote the manuscript. Jianjun Wang, Waleed Amjad Khan, Aliya Ayaz, and Xilin Hou helped in revision. Nadeem Khan and Han Ke contributed equally to this work. All authors read and approved the manuscript.

Acknowledgments

The authors express their gratitude to Miss Hamna Shazadee (College of Life Science, Nanjing Agricultural University) for excellent support and serious comments to improve the paper. This study was financially supported by the Independent Innovation Fund for Agricultural Science and Technology of Jiangsu Province (CX (15) 1015) and North Jiangsu Special Project of Jiangsu Province (SZ-LYG2017027).

Supplementary Materials

Figure S1: indication of isoelectric point (pI) values for PP2C based on *B. rapa* chromosomes (Br01-Br10). Figure

S2: grand average of hydropathicity (GRAVY) of *PP2C* genes. Figure S3: the number of exon for the *PP2C* gene based on *B. rapa* chromosomes (Br01-Br10). Figure S4: gene structure, the exon-intron, and upstream/downstream region are represented by black boxes and blue boxes, respectively. At the bottom of the figure, the relative position is proportionally displayed based on the kilobase scale. Figure S5: the conserved motifs of *PP2C* were elucidated by MEME. Different motifs and their positions are represented by different colors, numbered 1–10 at the bottom. Figure S6: the LOGOS of *PP2C* were also elucidated by MEME online server. Figure S7: the ratios of three subgenomes of *B. rapa* for *PP2C* genes. Figure S8: the correlation between *Ks* and *Ka* for paralogous gene pairs. Figure S9: phylogenetic relationship of *PP2C* between *B. rapa* and *A. thaliana*. The phylogenetic tree was constructed by MEGA 7 using the Maximum Likelihood Method (1000 bootstrap). Genes of various subgroups of *PP2C* are marked with different color. Figure S10: phylogenetic relationship of *PP2C* among other species and *A. thaliana*. The phylogenetic tree was constructed by MEGA 7 using the Maximum Likelihood Method (1000 bootstrap). Genes of *PP2C* for different subgroups are marked with different colors. Figure S11: phylogenetic relationship of *PP2C* among other species and *A. thaliana*. The phylogenetic tree was constructed by MEGA 7 using the Maximum Likelihood Method (1000 bootstrap). Genes of *PP2C* for different subgroups are marked with different colors. Figure S12A: heatmap of expression profiles for 29 paralogous pairs in five various tissues: root, stem, leaf, flower, and silique. The Pearson correlation coefficients (PCCs) are also displayed in brackets, while NA indicates no available results for PCC. B. Venn diagram analysis of the tissue expression of paralogous pairs for *PP2C*. Figure S13: the coregulatory network for *PP2C* presented by the STRING server. Table 1. Sequences of the *BraPP2C* gene primers used for quantitative real-time PCR. Table 2: the basic information of *PP2C* genes identified in *Brassica rapa*. Table 3: the gene with outlier *Ka/Ks* values and estimated divergence time for syntenic pairs of *BraPP2C*. Table 4: identification of *BraPP2C* syntenic genes between *A. thaliana* along with three subgenomes of *Brassica rapa*. Table 5: the FPKM values of *PP2C* genes in *B. rapa*. Table 6: syntenic paralog pairs of *BraPP2C* with PC and FPKM values. Table 7: cis-elements of *PP2C* genes in *Brassica rapa*. Table 8: relative expression pattern of *BraPP2C* genes along with PC values with respect to various treatments by qRT-PCR. Table 9: the Pearson's correlation coefficient (PCC) of the stress-induced *PP2C* genes in *Brassica rapa*. Table 10: information of *PP2C* genes in 10 plants in this work. (*Supplementary Materials*)

References

- [1] S. Luan, "Protein phosphatases and signaling cascades in higher plants," *Trends in Plant Science*, vol. 3, no. 7, pp. 271–275, 1998.
- [2] P. Cohen, "The structure and regulation of protein phosphatases," *Annual Review of Biochemistry*, vol. 58, pp. 453–508, 1989.
- [3] J. Cao, M. Jiang, P. Li, and Z. Chu, "Genome-wide identification and evolutionary analyses of the *PP2C* gene family with their expression profiling in response to multiple stresses in *Brachypodium distachyon*," *BMC Genomics*, vol. 17, no. 1, p. 175, 2016.
- [4] M. S. Haider, C. Zhang, M. M. Kurjogi et al., "Insights into grapevine defense response against drought as revealed by biochemical, physiological and RNA-Seq analysis," *Scientific Reports*, vol. 7, no. 1, article no. 13134, 2017.
- [5] S. C. Popescu, G. V. Popescu, S. Bachan et al., "MAPK target networks in *Arabidopsis thaliana* revealed using functional protein microarrays," *Genes & Development*, vol. 23, no. 1, pp. 80–92, 2009.
- [6] P. Wu, W. Wang, Y. Li, and X. Hou, "Divergent evolutionary patterns of the MAPK cascade genes in *Brassica rapa* and plant phylogenetics," *Horticulture Research*, vol. 4, article no. 17079, 2017.
- [7] P. Wu, W. Wang, W. Duan, Y. Li, and X. Hou, "Comprehensive analysis of the CDPK-SnRK superfamily genes in Chinese cabbage and its evolutionary implications in plants," *Frontiers in Plant Science*, vol. 8, article no. 162, 2017.
- [8] M. S. Haider, M. M. Kurjogi, M. Khalil-Ur-Rehman et al., "Grapevine immune signaling network in response to drought stress as revealed by transcriptomic analysis," *Plant Physiology and Biochemistry*, vol. 121, pp. 187–195, 2017.
- [9] S. Luan, "The CBL-CIPK network in plant calcium signaling," *Trends in Plant Science*, vol. 14, no. 1, pp. 37–42, 2009.
- [10] O. Batistić and J. Kudla, "Plant calcineurin B-like proteins and their interacting protein kinases," *Biochimica et Biophysica Acta (BBA)—Molecular Cell Research*, vol. 1793, no. 6, pp. 985–992, 2009.
- [11] S. Laurie and G. R. Stewart, "Effects of nitrogen supply and high temperature on the growth and physiology of the chickpea," *Plant, Cell & Environment*, vol. 16, no. 6, pp. 609–621, 1993.
- [12] C. Sánchez, A. B. Baranda, and I. M. De Marañón, "The effect of High Pressure and High Temperature processing on carotenoids and chlorophylls content in some vegetables," *Food Chemistry*, vol. 163, pp. 37–45, 2014.
- [13] A. Singh, A. Pandey, A. K. Srivastava, L.-S. P. Tran, and G. K. Pandey, "Plant protein phosphatases 2C: from genomic diversity to functional multiplicity and importance in stress management," *Critical Reviews in Biotechnology*, vol. 36, no. 6, pp. 1023–1035, 2016.
- [14] H. Sugimoto, S. Kondo, T. Tanaka et al., "Overexpression of a novel *Arabidopsis* *PP2C* isoform, AtPP2CF1, enhances plant biomass production by increasing inflorescence stem growth," *Journal of Experimental Botany*, vol. 65, no. 18, pp. 5385–5400, 2014.
- [15] S. Merlot, F. Gosti, D. Guerrier, A. Vavasseur, and J. Giraudat, "The ABI1 and ABI2 protein phosphatases 2C act in a negative feedback regulatory loop of the abscisic acid signalling pathway," *The Plant Journal*, vol. 25, no. 3, pp. 295–303, 2001.
- [16] M. P. González-García, D. Rodríguez, C. Nicolás, P. L. Rodríguez, G. Nicolás, and O. Lorenzo, "Negative regulation of abscisic acid signaling by the *Fagus sylvatica* FsPP2C1 plays a role in seed dormancy regulation and promotion of seed germination," *Plant Physiology*, vol. 133, no. 1, pp. 135–144, 2003.
- [17] A. Saez, N. Apostolova, M. Gonzalez-Guzman et al., "Gain-of-function and loss-of-function phenotypes of the protein phosphatase 2C HABI1 reveal its role as a negative regulator of abscisic acid signalling," *The Plant Journal*, vol. 37, no. 3, pp. 354–369, 2004.
- [18] K. Komatsu, N. Suzuki, M. Kuwamura et al., "Group A *PP2C*s evolved in land plants as key regulators of intrinsic desiccation tolerance," *Nature Communications*, vol. 4, article no. 2219, 2013.

- [19] Q. Zhang, "Strategies for developing green super rice," *Proceedings of the National Academy of Sciences of the United States of America*, vol. 104, no. 42, pp. 16402–16409, 2007.
- [20] Y. Xiang, X. Sun, S. Gao, F. Qin, and M. Dai, "Deletion of an endoplasmic reticulum stress response element in a ZmPP2C-A gene facilitates drought tolerance of maize seedlings," *Molecular Plant*, vol. 10, no. 3, pp. 456–469, 2017.
- [21] J. Leung and J. Giraudat, "Abscisic acid signal transduction," *Annual Review of Plant Biology*, vol. 49, no. 1, pp. 199–222, 1998.
- [22] J. Sheen, "Mutational analysis of protein phosphatase 2C involved in abscisic acid signal transduction in higher plants," *Proceedings of the National Academy of Sciences of the United States of America*, vol. 95, no. 3, pp. 975–980, 1998.
- [23] J. Leung, M. Bouvier-Durand, P.-C. Morris, D. Guerrier, F. Chedford, and J. Giraudat, "Arabidopsis ABA response gene ABI1: Features of a calcium-modulated protein phosphatase," *Science*, vol. 264, no. 5164, pp. 1448–1452, 1994.
- [24] Y. Murata, Z. M. Pei, I. C. Mori, and J. Schroeder, "Abscisic acid activation of plasma membrane Ca(2+) channels in guard cells requires cytosolic NAD(P)H and is differentially disrupted upstream and downstream of reactive oxygen species production in abi-1 and abi-2 protein phosphatase 2C mutants," *The Plant Cell*, vol. 13, no. 11, pp. 2513–2523, 2001.
- [25] S. Tähtiharju and T. Palva, "Antisense inhibition of protein phosphatase 2C accelerates cold acclimation in *Arabidopsis thaliana*," *The Plant Journal*, vol. 26, no. 4, pp. 461–470, 2001.
- [26] X. Wang, H. Wang, J. Wang et al., "The genome of the mesopolyploid crop species *Brassica rapa*," *Nature Genetics*, vol. 43, no. 10, pp. 1035–1039, 2011.
- [27] F. Cheng, T. Mandáková, J. Wu, Q. Xie, M. A. Lysak, and X. Wang, "Deciphering the diploid ancestral genome of the mesohexaploid *Brassica rapa*," *The Plant Cell*, vol. 25, no. 5, pp. 1541–1554, 2013.
- [28] D. Lang, K. K. Ullrich, F. Murat et al., "The physcomitrella patens chromosome-scale assembly reveals moss genome structure and evolution," *The Plant Journal*, vol. 93, no. 3, pp. 515–533, 2018.
- [29] The Brassica rapa Genome Sequencing Project C, X. C. Wang, H. Wang, J. Wang et al., "The genome of the mesopolyploid crop species *Brassica rapa*," *Nature Genetics*, vol. 43, article no. 1035, 2011.
- [30] D. M. Goodstein, S. Shu, R. Howson et al., "Phytozome: a comparative platform for green plant genomics," *Nucleic Acids Research*, vol. 40, no. 1, pp. D1178–D1186, 2012.
- [31] I. Letunic, T. Doerks, and P. Bork, "SMART 7: recent updates to the protein domain annotation resource," *Nucleic Acids Research*, vol. 40, no. 1, pp. D302–D305, 2012.
- [32] R. C. Edgar, "MUSCLE: multiple sequence alignment with high accuracy and high throughput," *Nucleic Acids Research*, vol. 32, no. 5, pp. 1792–1797, 2004.
- [33] S. Kumar, G. Stecher, and K. Tamura, "MEGA7: molecular evolutionary genetics analysis version 7.0 for bigger datasets," *Molecular Biology and Evolution*, vol. 33, no. 7, pp. 1870–1874, 2016.
- [34] M. A. Koch, B. Haubold, and T. Mitchell-Olds, "Comparative evolutionary analysis of chalcone synthase and alcohol dehydrogenase loci in *Arabidopsis*, *Arabis*, and related genera (Brassicaceae)," *Molecular Biology and Evolution*, vol. 17, no. 10, pp. 1483–1498, 2000.
- [35] T. L. Bailey, M. Boden, F. A. Buske et al., "MEME SUITE: tools for motif discovery and searching," *Nucleic Acids Research*, vol. 37, no. 2, pp. W202–W208, 2009.
- [36] B. Hu, J. Jin, A.-Y. Guo, H. Zhang, J. Luo, and G. Gao, "GSDS 2.0: an upgraded gene feature visualization server," *Bioinformatics*, vol. 31, no. 8, pp. 1296–1297, 2015.
- [37] M. Lescot, P. Déhais, G. Thijs et al., "PlantCARE, a database of plant cis-acting regulatory elements and a portal to tools for in silico analysis of promoter sequences," *Nucleic Acids Research*, vol. 30, no. 1, pp. 325–327, 2002.
- [38] R. E. Voorrips, "Mapchart: software for the graphical presentation of linkage maps and QTLs," *Journal of Heredity*, vol. 93, no. 1, pp. 77–78, 2002.
- [39] M. Krzywinski, J. Schein, I. Birol et al., "Circos: An information aesthetic for comparative genomics," *Genome Research*, vol. 19, no. 9, pp. 1639–1645, 2009.
- [40] N. Khan, C.-M. Hu, W. Amjad Khan, and X. Hou, "Genome-wide identification, classification, and expression divergence of glutathione-transferase family in brassica rapa under multiple hormone treatments," *BioMed Research International*, vol. 2018, Article ID 6023457, 19 pages, 2018.
- [41] N. Khan, C.-M. Hu, W. A. Khan et al., "Evolution and expression divergence of E2 gene family under multiple abiotic and phytohormones stresses in *Brassica rapa*," *BioMed Research International*, vol. 2018, Article ID 5206758, 18 pages, 2018.
- [42] N. Khan, C. Hu, W. A. Khan et al., "Genome-wide identification, classification, and expression pattern of homeobox gene family in brassica rapa under various stresses," *Scientific Reports*, vol. 8, article no. 16265, no. 1, 2018.
- [43] M. E. Schranz, M. A. Lysak, and T. Mitchell-Olds, "The ABC's of comparative genomics in the Brassicaceae: building blocks of crucifer genomes," *Trends in Plant Science*, vol. 11, no. 11, pp. 535–542, 2006.
- [44] T. Xue, D. Wang, S. Zhang et al., "Genome-wide and expression analysis of protein phosphatase 2C in rice and *Arabidopsis*," *BMC Genomics*, vol. 9, article 550, 2008.
- [45] C. Tong, X. Wang, J. Yu et al., "Comprehensive analysis of RNA-seq data reveals the complexity of the transcriptome in *Brassica rapa*," *BMC Genomics*, vol. 14, no. 1, article no. 689, 2013.
- [46] P. Bhalothia, C. Sangwan, A. Alok, S. Mehrotra, and R. Mehrotra, "PP2C-like promoter and its deletion variants are induced by ABA but not by MeJA and SA in *Arabidopsis thaliana*," *Frontiers in Plant Science*, vol. 7, article no. 547, 2016.
- [47] K. Wei and S. Pan, "Maize protein phosphatase gene family: Identification and molecular characterization," *BMC Genomics*, vol. 15, article no. 773, no. 1, 2014.
- [48] A. Singh, J. Giri, S. Kapoor, A. K. Tyagi, and G. K. Pandey, "Protein phosphatase complement in rice: genome-wide identification and transcriptional analysis under abiotic stress conditions and reproductive development," *BMC Genomics*, vol. 11, article no. 435, no. 1, 2010.
- [49] D. Kerk, J. Bulgrien, D. W. Smith, B. Barsam, S. Veretnik, and M. Gribskov, "The complement of protein phosphatase catalytic subunits encoded in the genome of *Arabidopsis*," *Plant Physiology*, vol. 129, no. 2, pp. 908–925, 2002.
- [50] S. Kim, M. Park, S.-I. Yeom et al., "Genome sequence of the hot pepper provides insights into the evolution of pungency in *Capsicum* species," *Nature Genetics*, vol. 46, no. 3, pp. 270–278, 2014.
- [51] W. Hu, Y. Yan, H. Shi et al., "The core regulatory network of the abscisic acid pathway in banana: Genome-wide identification and expression analyses during development, ripening, and abiotic stress," *BMC Plant Biology*, vol. 17, article no. 145, no. 1, 2017.

- [52] S. Fuchs, E. Grill, I. Meskiene, and A. Schweighofer, "Type 2C protein phosphatases in plants," *FEBS Journal*, vol. 280, no. 2, pp. 681–693, 2013.
- [53] M. Hurles, "Gene duplication: the genomic trade in spare parts," *PLoS Biology*, vol. 2, no. 7, p. e206, 2004.
- [54] P. P. Edger and J. C. Pires, "Gene and genome duplications: The impact of dosage-sensitivity on the fate of nuclear genes," *Chromosome Research*, vol. 17, no. 5, pp. 699–717, 2009.
- [55] Y. Jiao, C. Shi, B. H. Edil et al., "DAXX/ATR-X, MEN1, and mTOR pathway genes are frequently altered in pancreatic neuroendocrine tumors," *Science*, vol. 331, no. 6021, pp. 1199–1203, 2011.
- [56] S. Ohno, U. Wolf, and N. B. Atkin, "Evolution from fish to mammals by gene duplication," *Hereditas*, vol. 59, no. 1, pp. 169–187, 1968.
- [57] M. Lynch and J. S. Conery, "The evolutionary fate and consequences of duplicate genes," *Science*, vol. 290, no. 5494, pp. 1151–1155, 2000.
- [58] G. J. Allen, K. Kuchitsu, S. P. Chu, Y. Murata, and J. I. Schroeder, "Arabidopsis *abi-1* and *abi-2-1* phosphatase mutations reduce abscisic acid-induced cytoplasmic calcium rises in guard cells," *The Plant Cell*, vol. 11, no. 9, pp. 1785–1798, 1999.
- [59] J. M. Kuhn, A. Boisson-Dernier, M. B. Dizon, M. H. Maktabi, and J. I. Schroeder, "The protein phosphatase AtPP2CA negatively regulates abscisic acid signal transduction in arabidopsis, and effects of *abh1* on AtPP2CA mRNA," *Plant Physiology*, vol. 140, no. 1, pp. 127–139, 2006.
- [60] H.-L. Sun, X.-J. Wang, W.-H. Ding et al., "Identification of an important site for function of the type 2C protein phosphatase ABI2 in abscisic acid signalling in *Arabidopsis*," *Journal of Experimental Botany*, vol. 62, no. 15, pp. 5713–5725, 2011.
- [61] S. Rubio, A. Rodrigues, A. Saez et al., "Triple loss of function of protein phosphatases type 2C leads to partial constitutive response to endogenous abscisic acid," *Plant Physiology*, vol. 150, no. 3, pp. 1345–1355, 2009.
- [62] X. Liu, Y. Zhu, H. Zhai et al., "AtPP2CG1, a protein phosphatase 2C, positively regulates salt tolerance of *Arabidopsis* in abscisic acid-dependent manner," *Biochemical and Biophysical Research Communications*, vol. 422, no. 4, pp. 710–715, 2012.
- [63] M. S. Haider, M. M. Kurjogi, M. Khalil-ur-Rehman et al., "Drought stress revealed physiological, biochemical and gene-expressional variations in 'Yoshihime' peach (*Prunus persica* L) cultivar," *Journal of Plant Interactions*, vol. 13, no. 1, pp. 83–90, 2018.
- [64] C. Chonnanit, "Characterization and functional analysis of a novel PP2C phosphatase AP2C2 from *Arabidopsis*," 2008.
- [65] R. W. Williams, J. M. Wilson, and E. M. Meyerowitz, "A possible role for kinase-associated protein phosphatase in the *Arabidopsis* CLAVATA1 signaling pathway," *Proceedings of the National Academy of Sciences of the United States of America*, vol. 94, no. 19, pp. 10467–10472, 1997.
- [66] E. W. Ganko, B. C. Meyers, and T. J. Vision, "Divergence in expression between duplicated genes in *Arabidopsis*," *Molecular Biology and Evolution*, vol. 24, no. 10, pp. 2298–2309, 2007.
- [67] W.-H. Li, J. Yang, and X. Gu, "Expression divergence between duplicate genes," *Trends in Genetics*, vol. 21, no. 11, pp. 602–607, 2005.
- [68] J. Huerta-Cepas, J. Dopazo, M. A. Huynen, and T. Gabaldón, "Evidence for short-time divergence and long-time conservation of tissue-specific expression after gene duplication," *Briefings in Bioinformatics*, vol. 12, no. 5, pp. 442–448, 2011.



Hindawi

Submit your manuscripts at
www.hindawi.com

