

Figure S1 Outcomes T2-T3 CRC patients based on CT Body Composition. Outcomes based on visceral fat in T2-T3 CRC patients from the time of diagnosis. (A) Overall survival. (B) PFS. Outcomes based on skeletal muscle in T2-T3 CRC patients from the time of diagnosis. (C) Overall survival (D) PFS

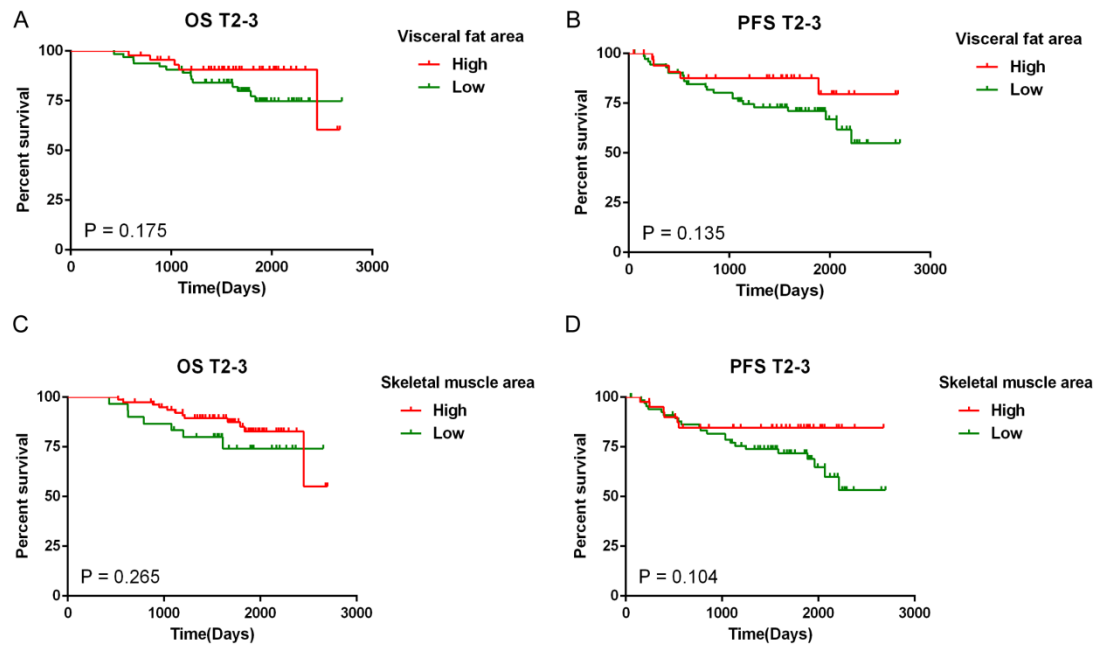


Figure S2 Outcomes CRC patients treated with XELOX based on CT Body Composition. Outcomes based on visceral fat in CRC patients treated with XELOX. (A) Overall survival. (B) PFS. Outcomes based on skeletal muscle in CRC patients treated with XELOX. (C) Overall survival (D) PFS

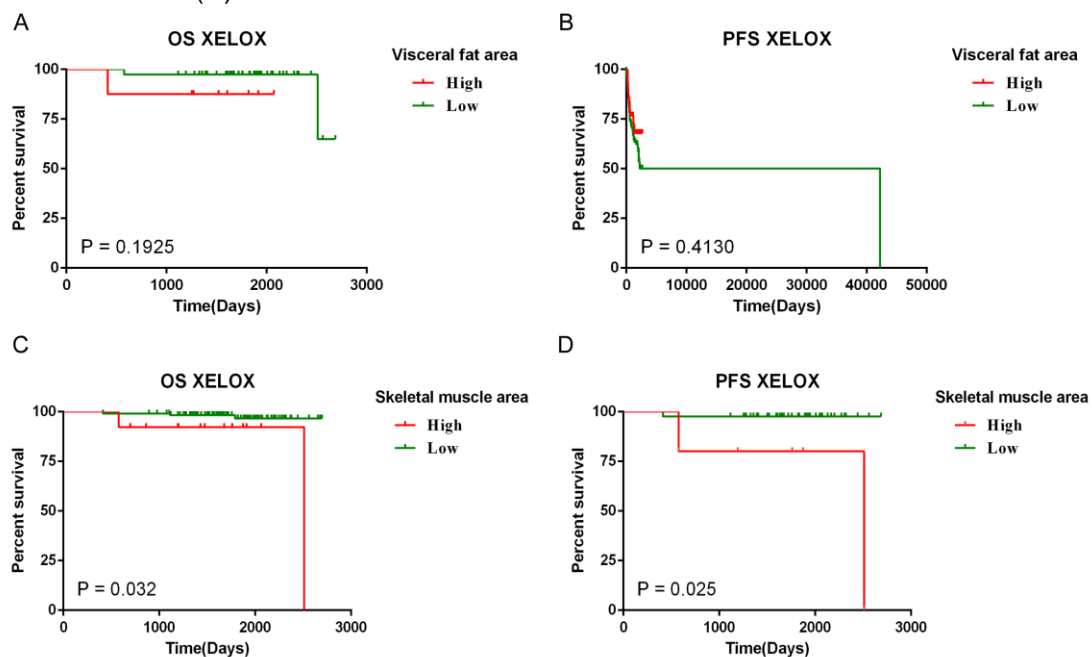


Figure S3 Outcomes CRC patients treated with FOLFOX/FOLFIRI based on CT Body Composition. Outcomes based on visceral fat in CRC patients treated with FOLFOX/FOLFIRI. (A) Overall survival. (B) PFS. Outcomes based on skeletal muscle in FOLFOX/FOLFIRI CRC patients. (C) Overall survival (D) PFS

