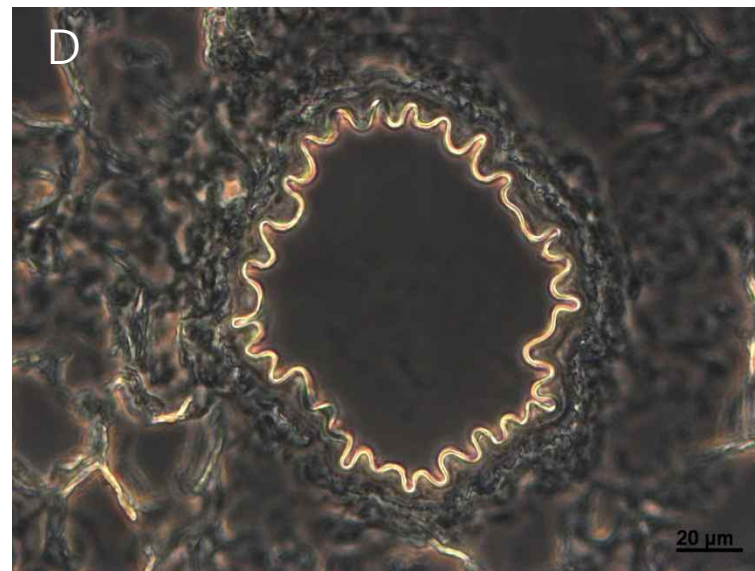
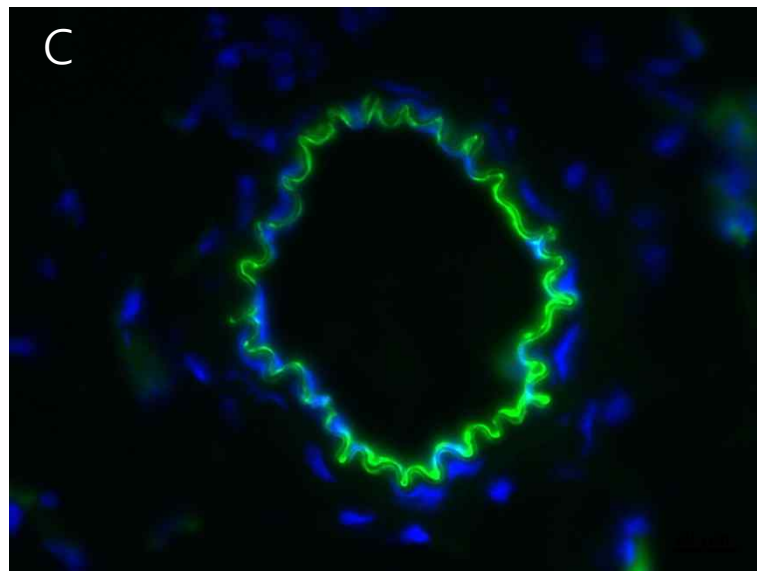
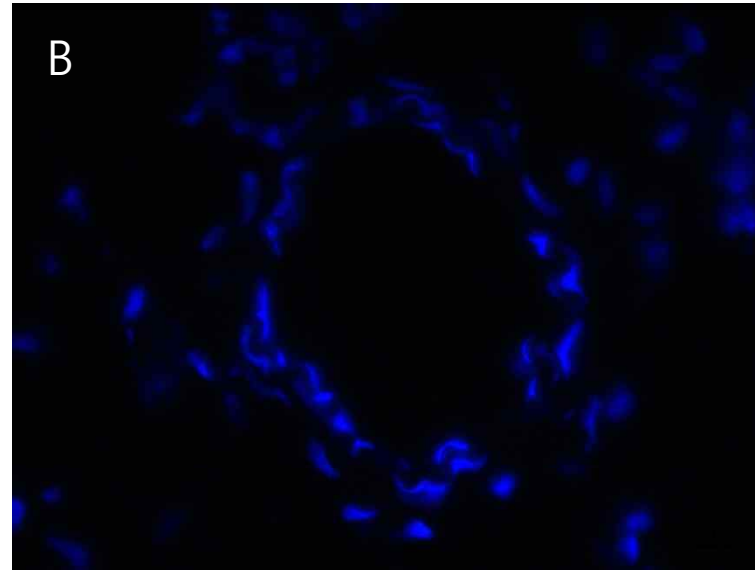
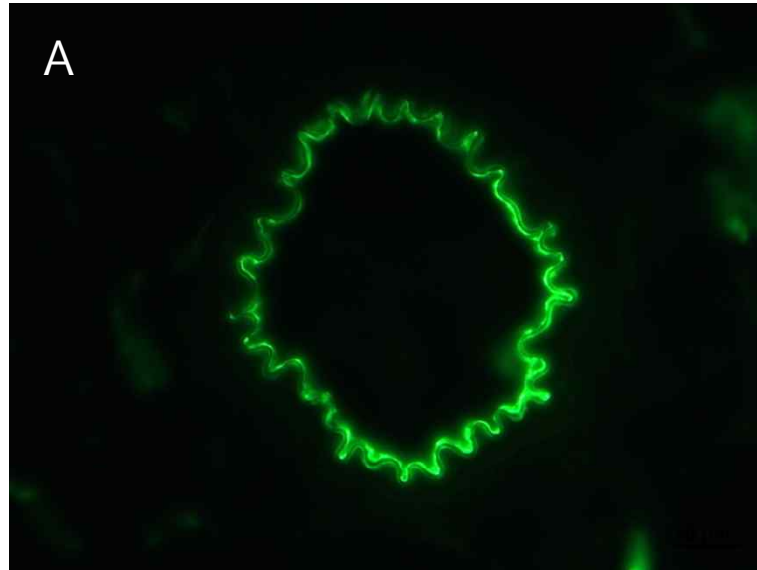


Supplementary Information

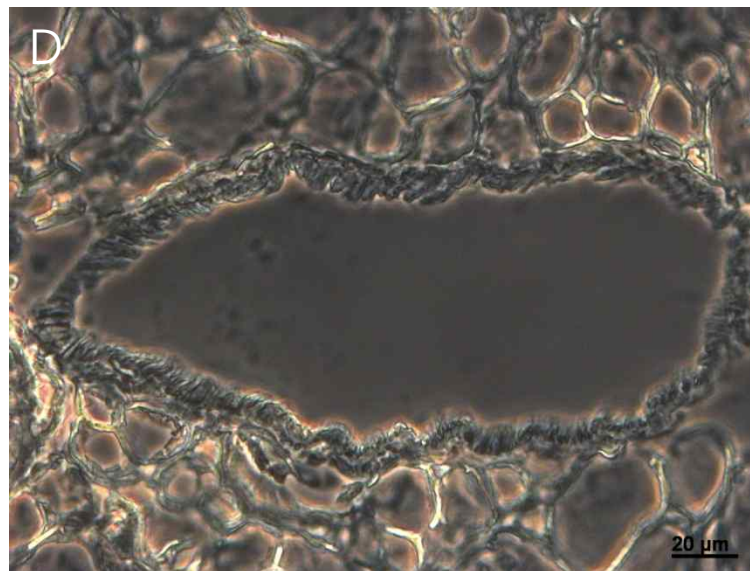
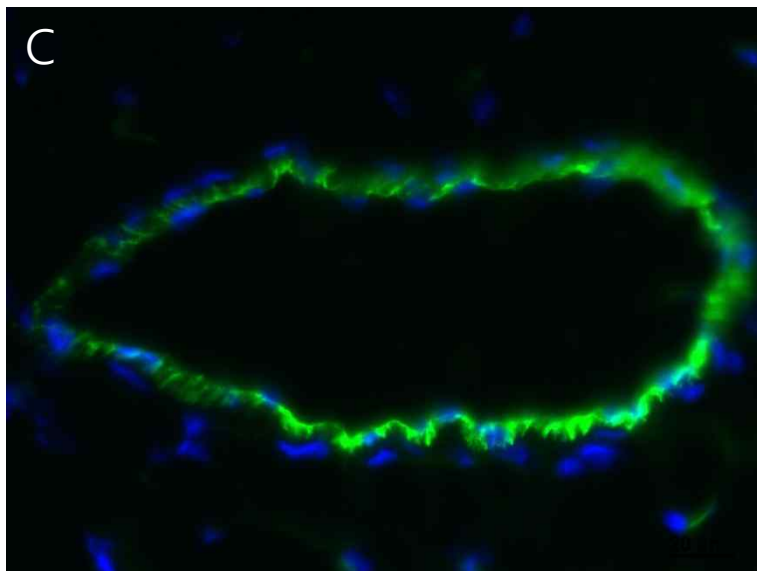
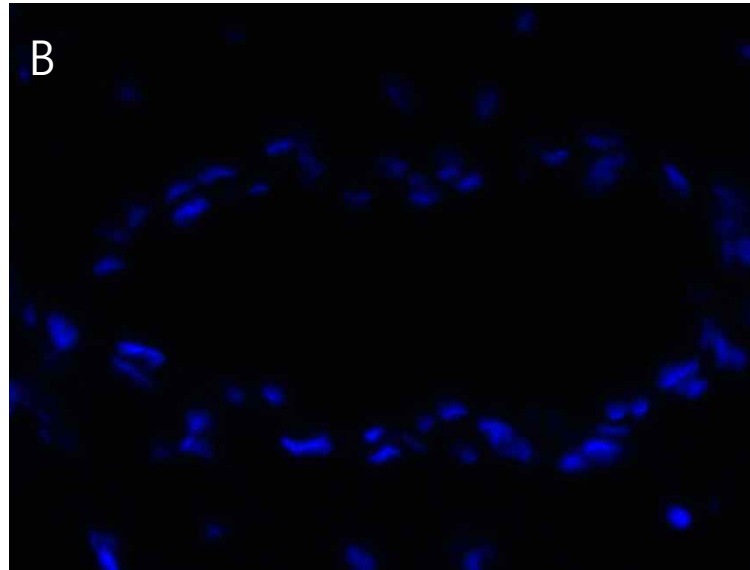
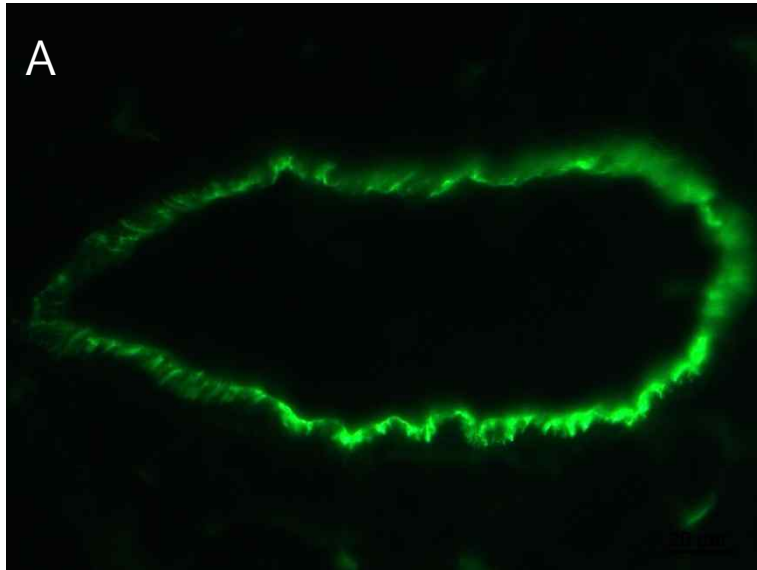
Immunofluorescence staining
of primo vessel

Fig. 1.1 Artery: CD31



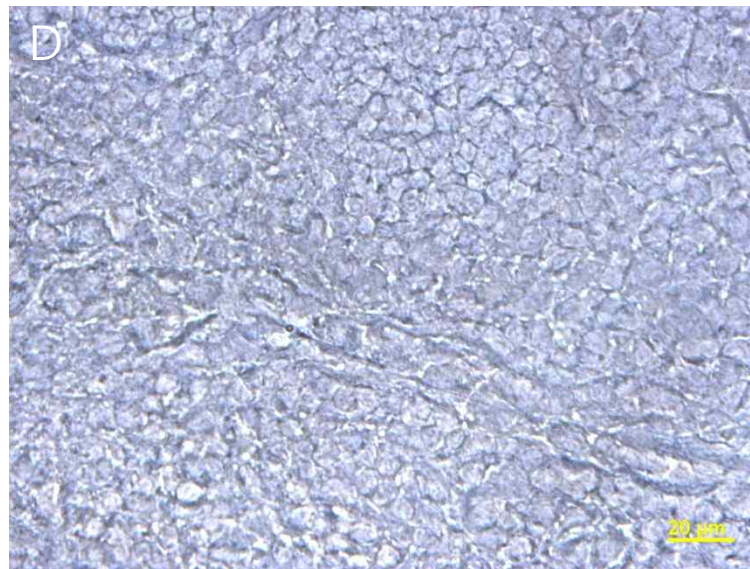
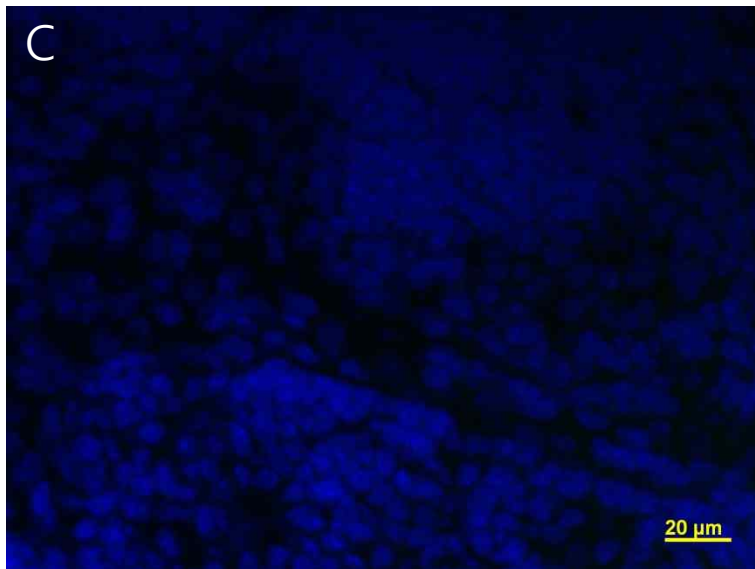
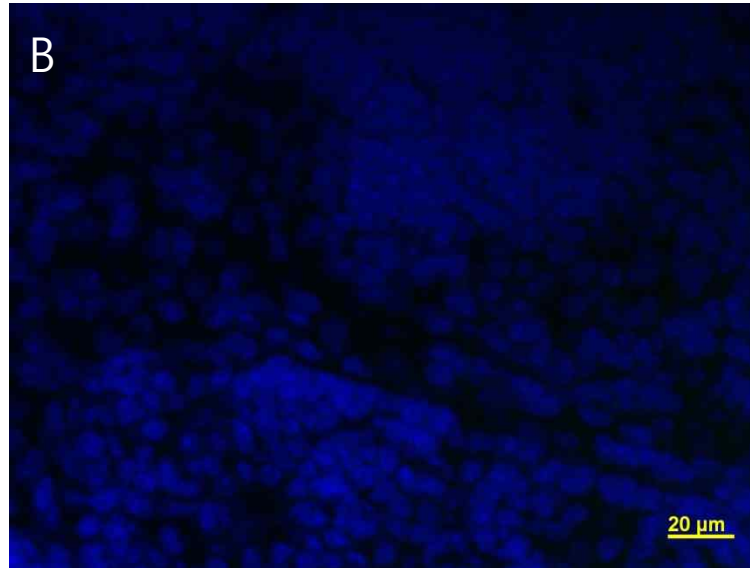
- A – CD31
- B – DAPI
- C – CD31
+ DAPI
- D – Phase
contrast

Fig. 1.2 Vein: CD31



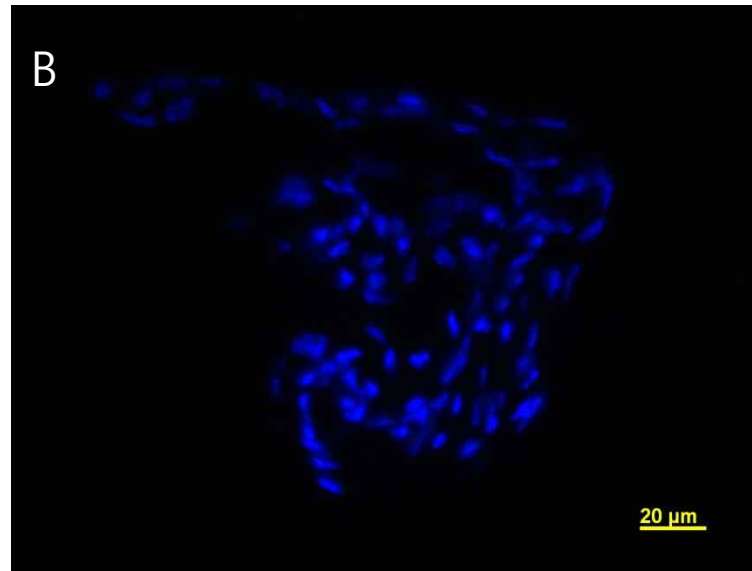
A – CD31
B – DAPI
C – CD31
+ DAPI
D – Phase
contrast

Fig.1.3 Lymph node: CD31



A – CD31
B – DAPI
C – CD31
+ DAPI
D – Phase
contrast

Fig. 1.4 Primo vessel on the fascia
of subcutaneous tumor: CD31



A – CD31
B – DAPI
C – CD31
+ DAPI
D – Phase
contrast

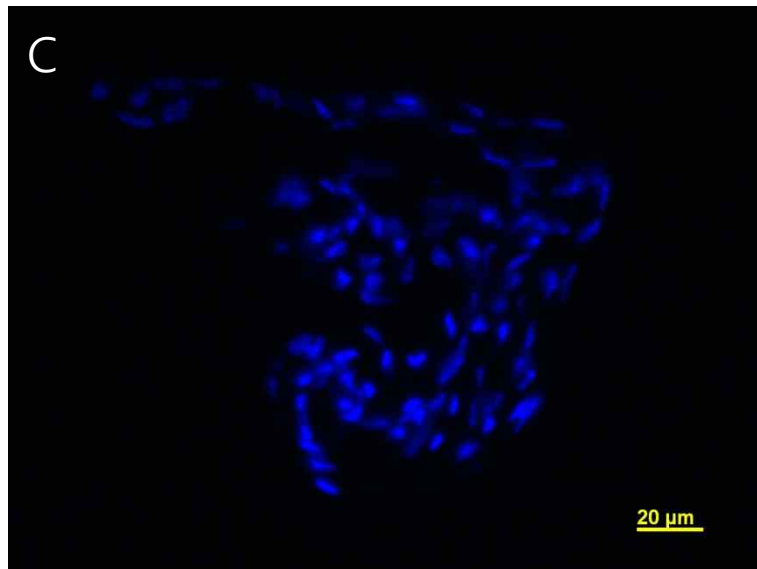
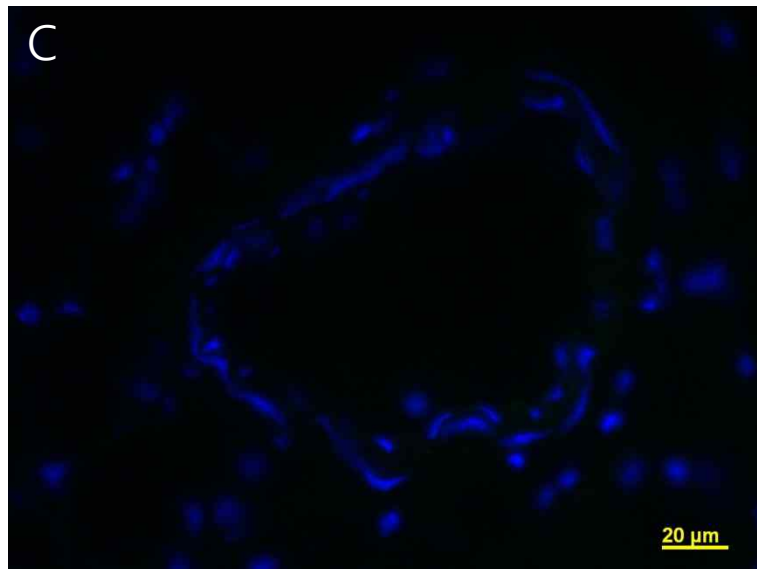
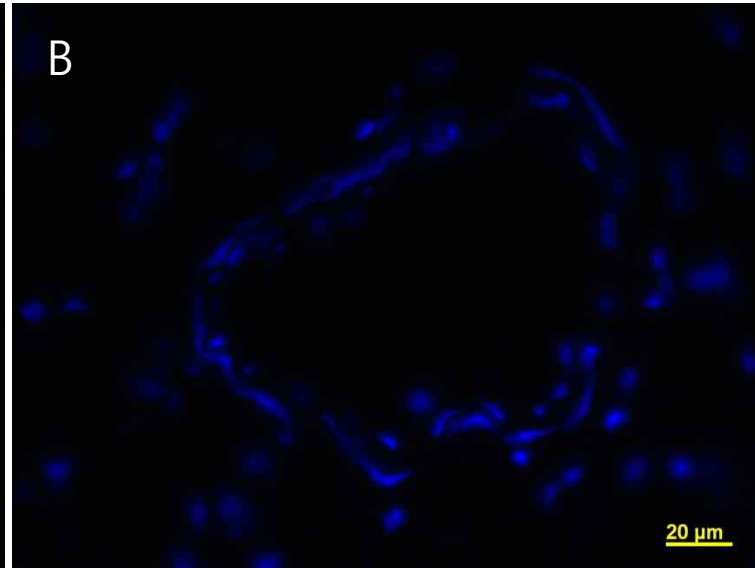
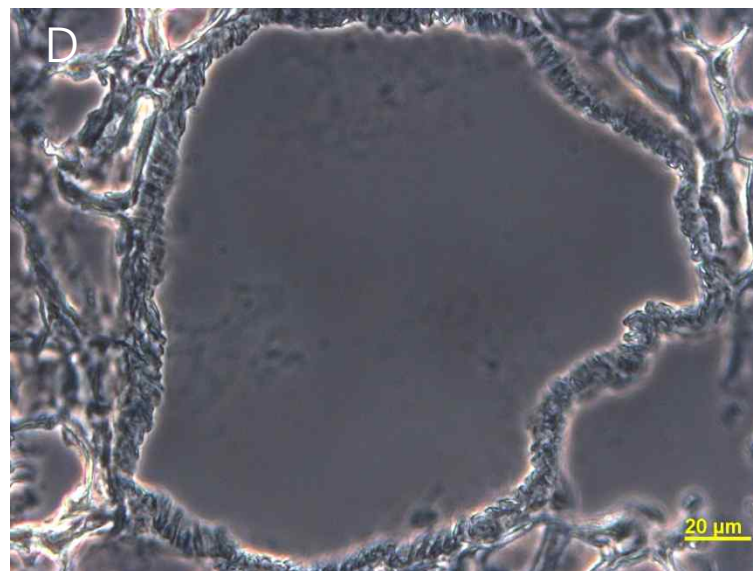
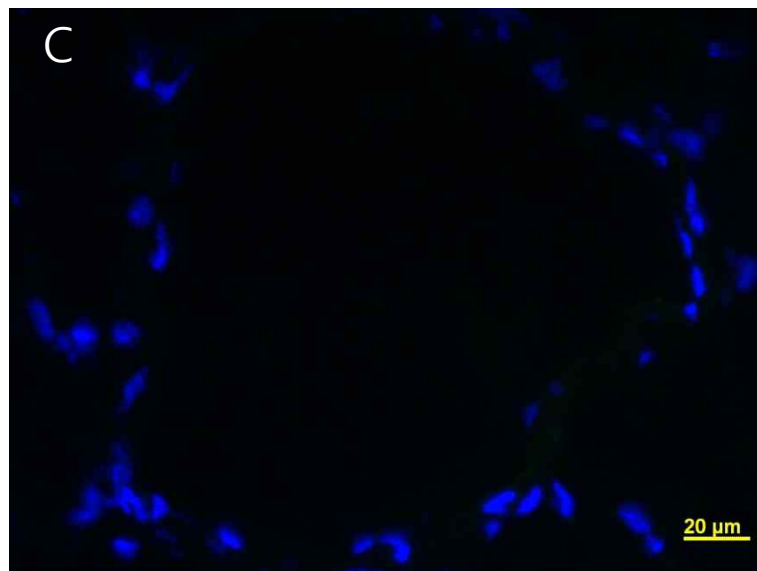
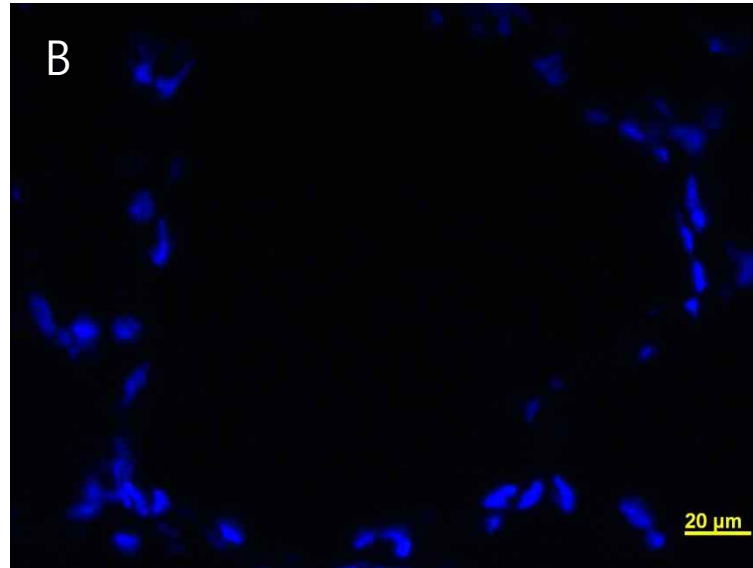


Fig. 2.1 Artery: LYVE-1



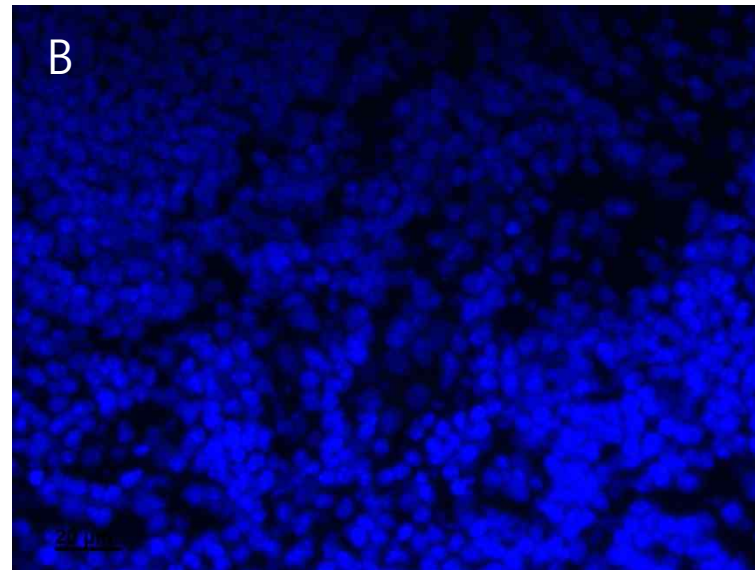
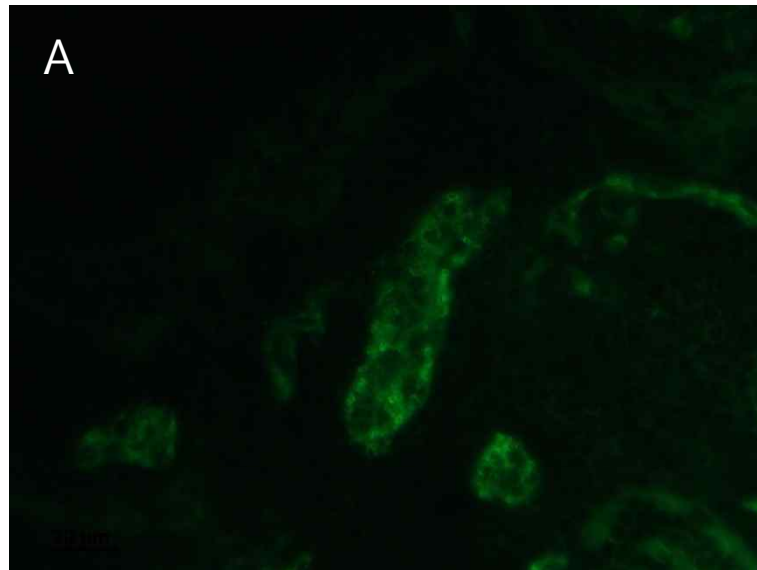
A – LYVE-1
B – DAPI
C – LYVE-1
+ DAPI
D – Phase
contrast

Fig. 2.2 Vein: LYVE-1



A – LYVE-1
B – DAPI
C – LYVE-1
+ DAPI
D – Phase
contrast

Fig. 2.3 Lymph node: LYVE-1



A – LYVE-1
B – DAPI
C – LYVE-1
+ DAPI
D – Phase
contrast

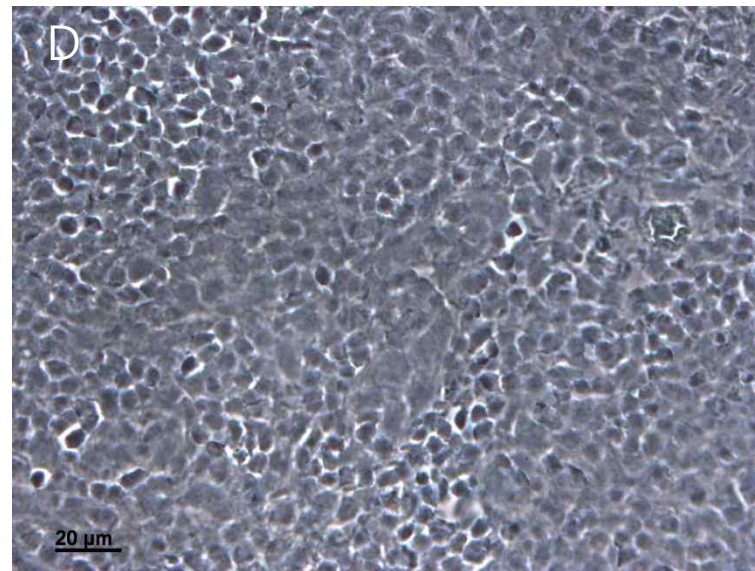
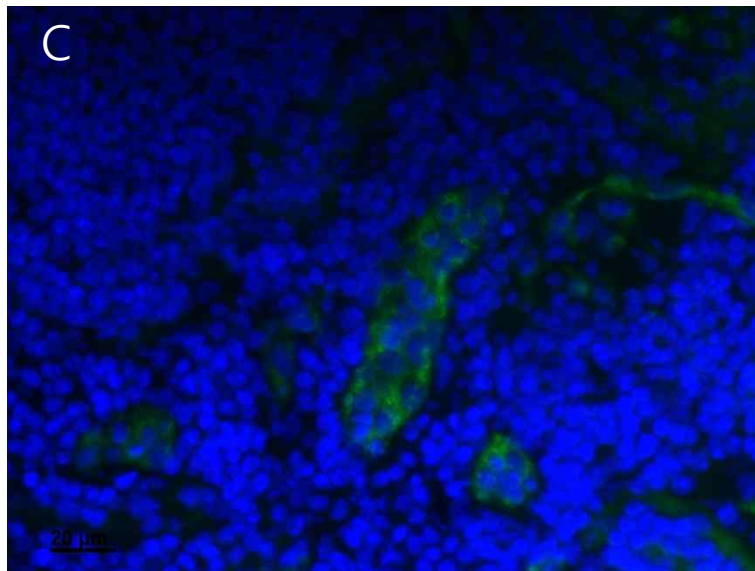
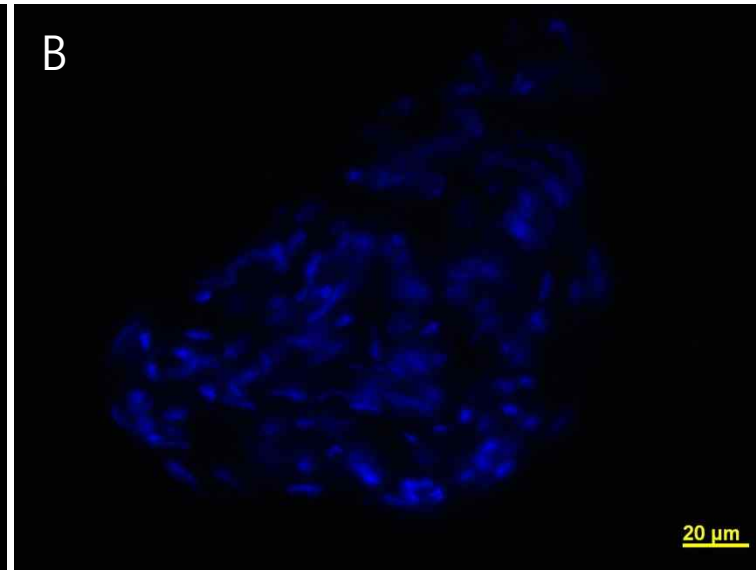


Fig. 2.4 Primo vessel on the fascia
of subcutaneous tumor: LYVE-1



A – LYVE-1
B – DAPI
C – LYVE-1
+ DAPI
D – Phase
contrast

