

Supplementary Materials

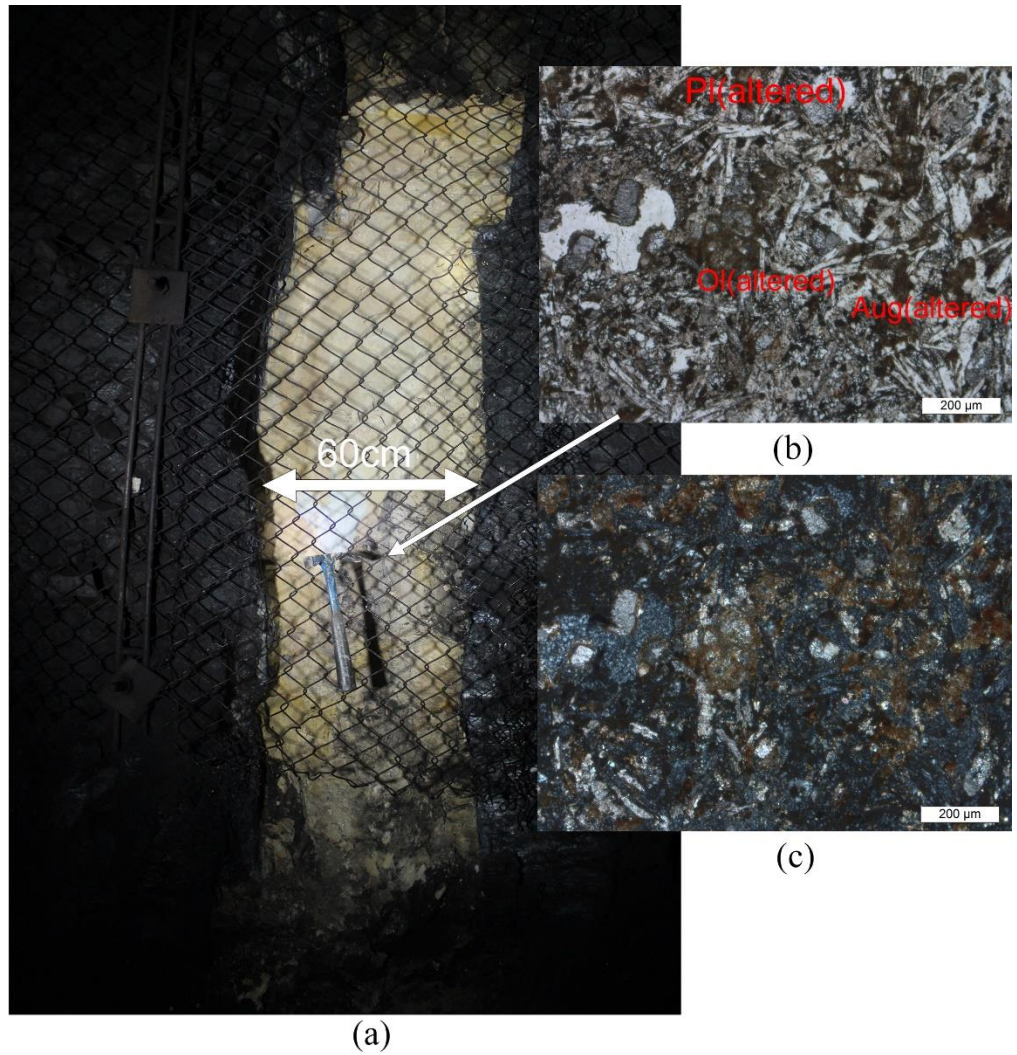


Figure 14: (a) A narrow diabase dike (60 cm wide, yellow) in the Xiaoyu coal mine, Datong coalfield. Photomicrographs (b) PPL, (c) XPL of this dike. Plagioclase crystals were completely altered to clay minerals, while augite and olivine were altered to carbonate minerals and chlorite.

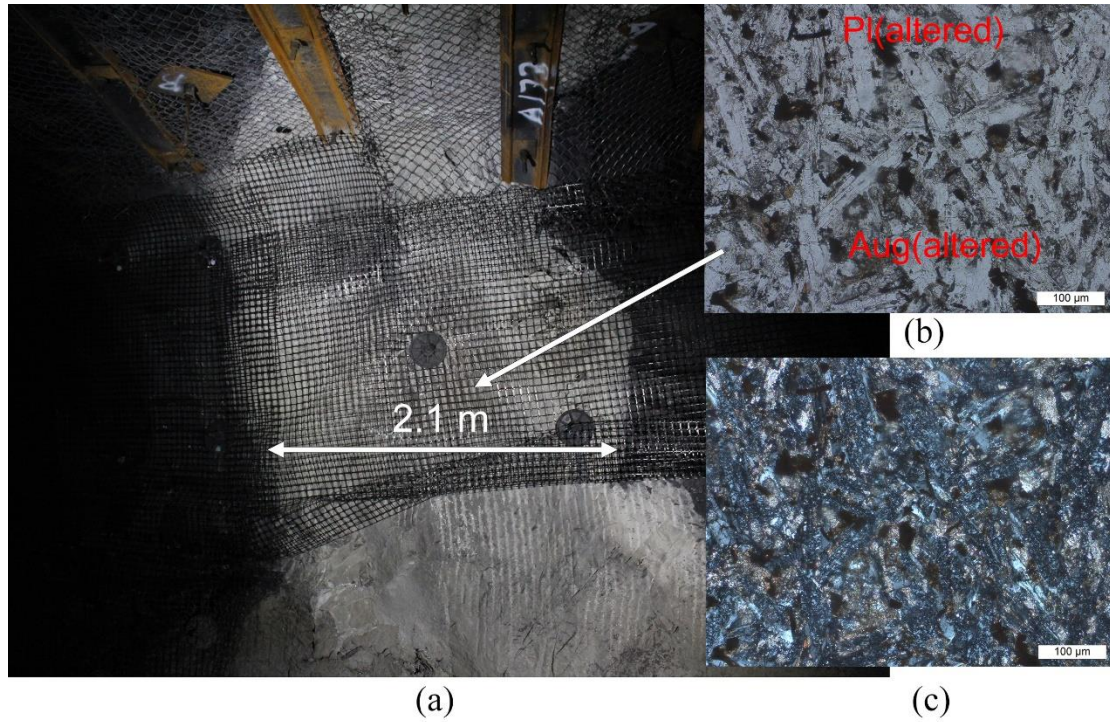


Figure 15: (a) A diabase dike (pale gray) in the Wajinwan coal mine, Datong coalfield. Photomicrographs (b) PPL, (c) XPL of this dike. Plagioclase crystals were completely altered to clay minerals, while augite and olivine were altered to carbonate minerals and chlorite.



Figure 16: A diabase dike (pale yellow) in the Jinzhuang coal mine, Datong coalfield.



Figure 17: A diabase sill (pale gray) in the Dongzhouyao coal mine, Datong coalfield.

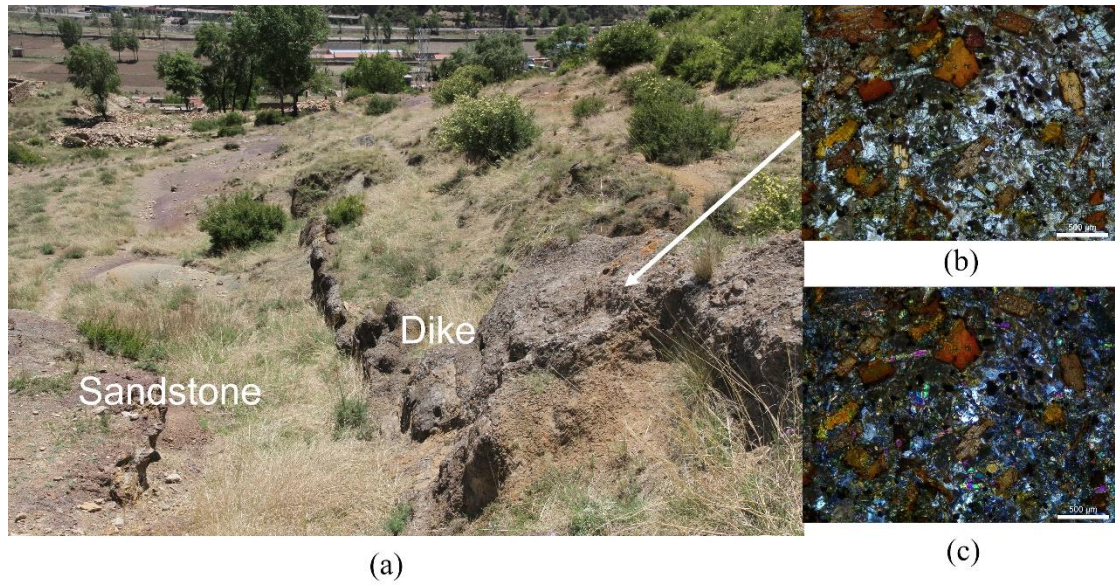


Figure 18: A lamprophyre dike (dark green to dark gray) in Emaokou, Datong coalfield. Photomicrographs (b) PPL, (c) XPL of this dike. Lamprophyric texture; the minerals were not seriously altered.