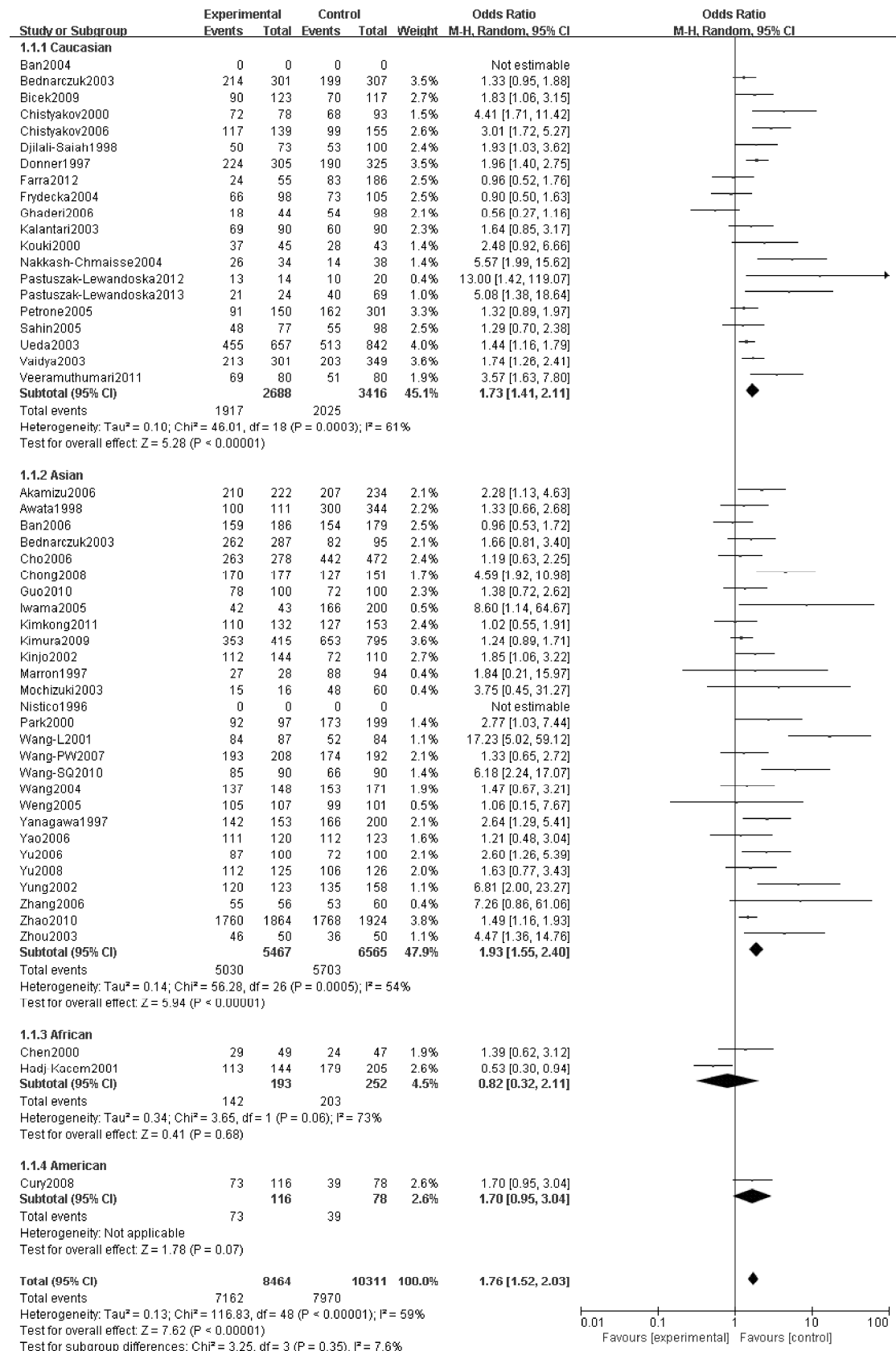
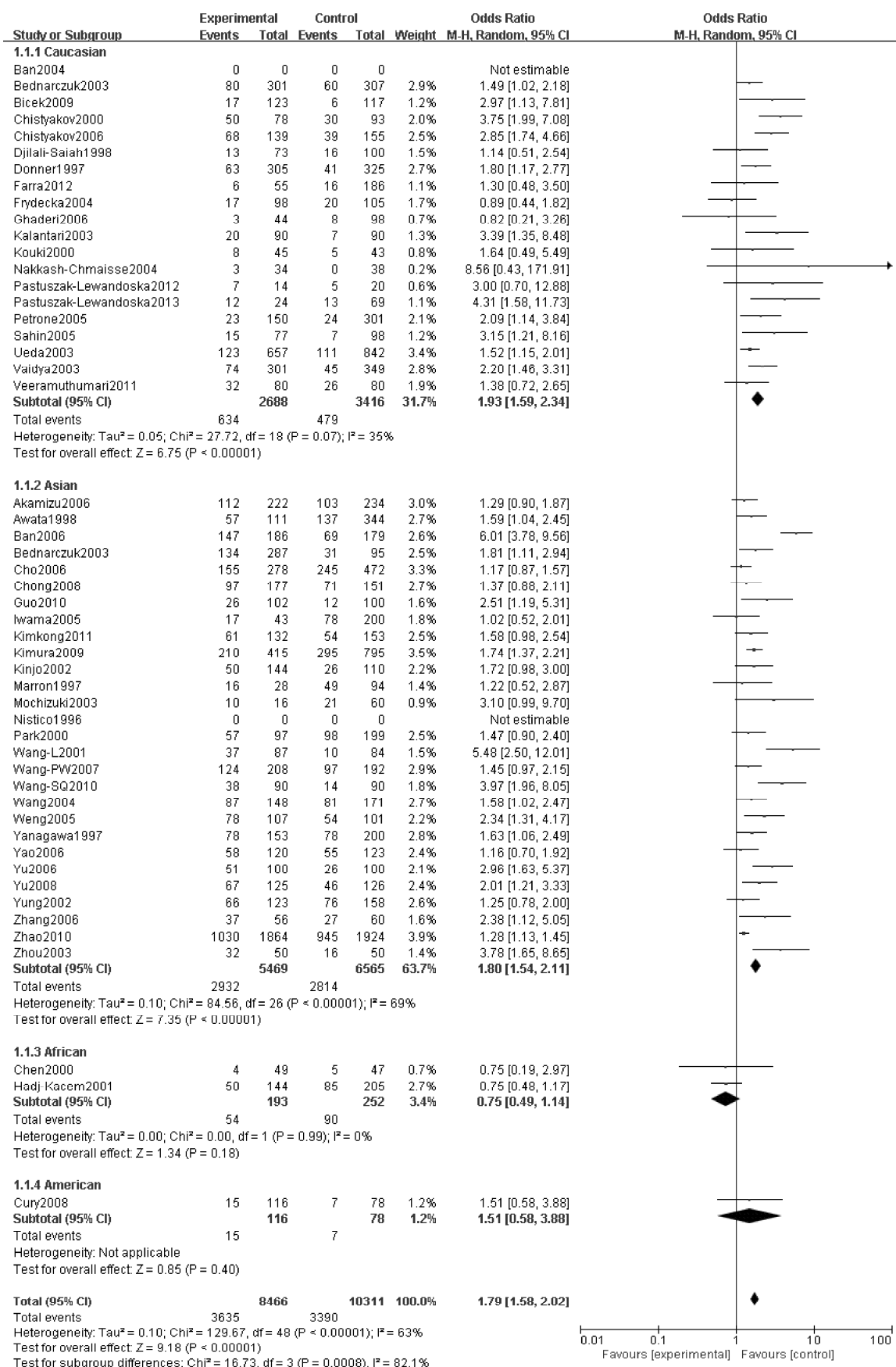


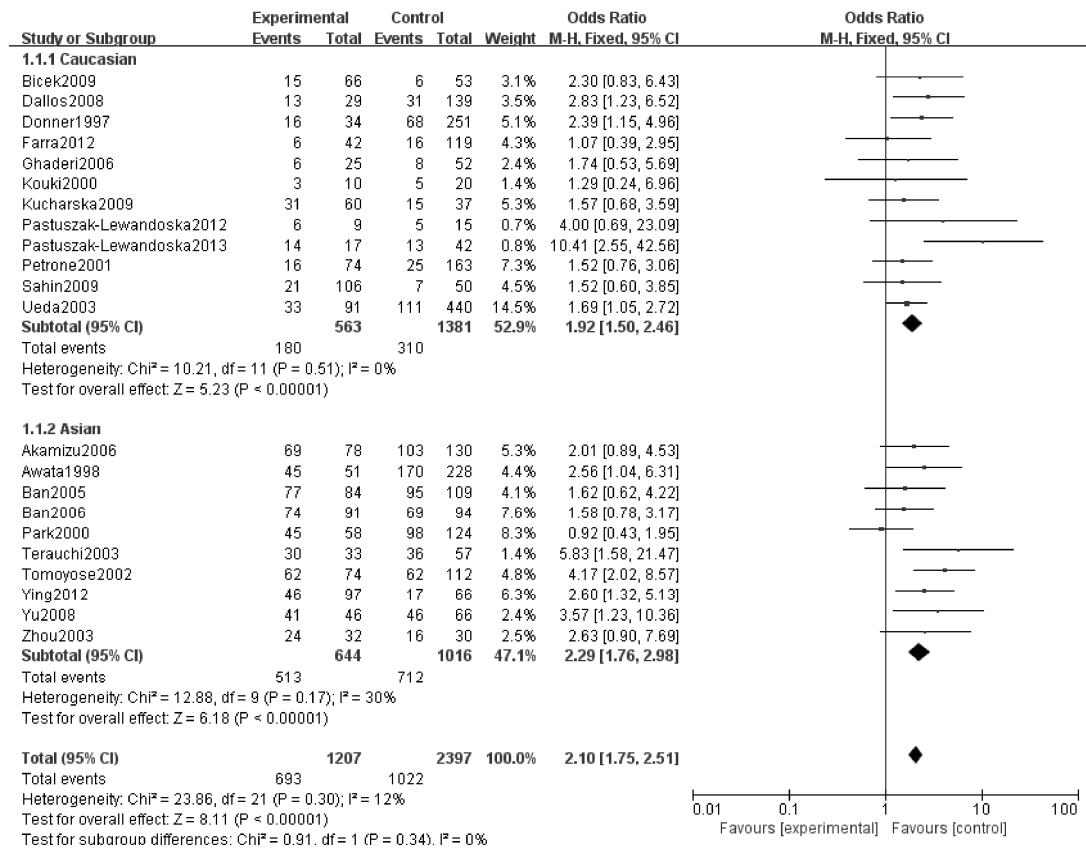
## Supplemental Figures



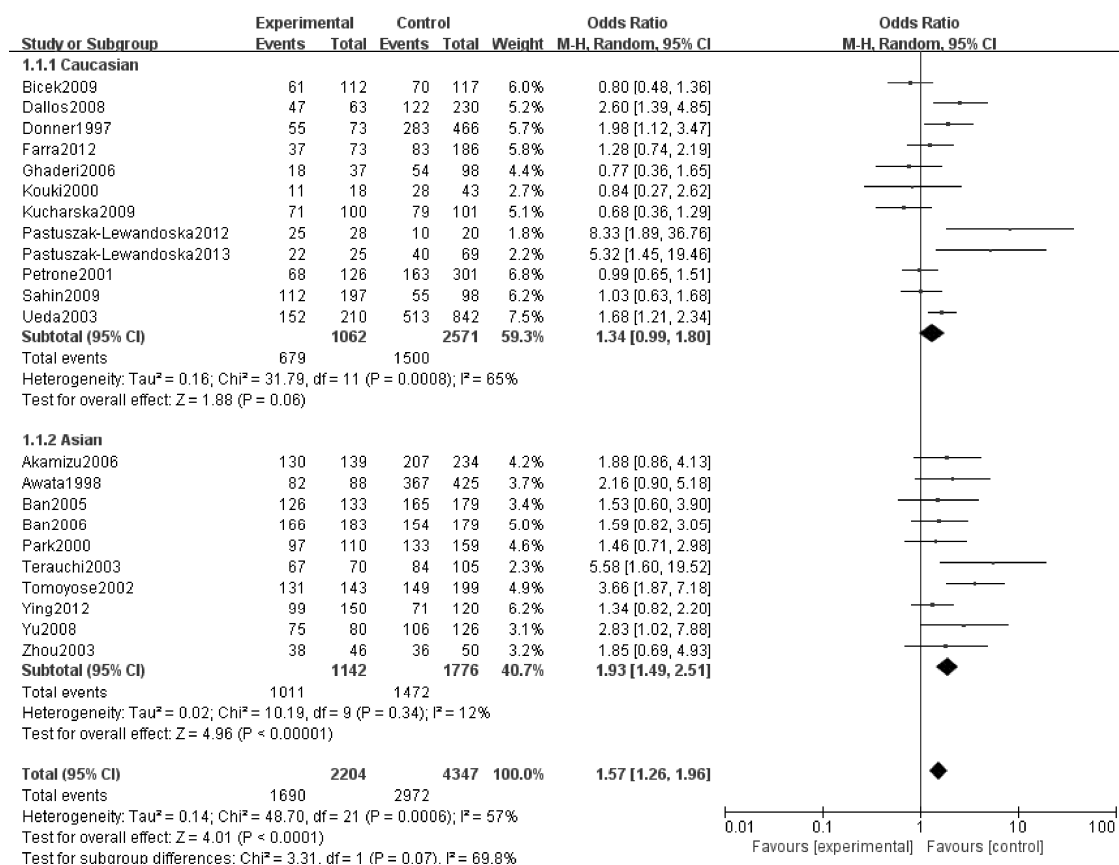
Supplemental Figure 1 Forest plot of the association between a dominant model of A49G polymorphism and GD.



Supplemental Figure 2 Forest plot of the association between a recessive model of A49G polymorphism and GD.

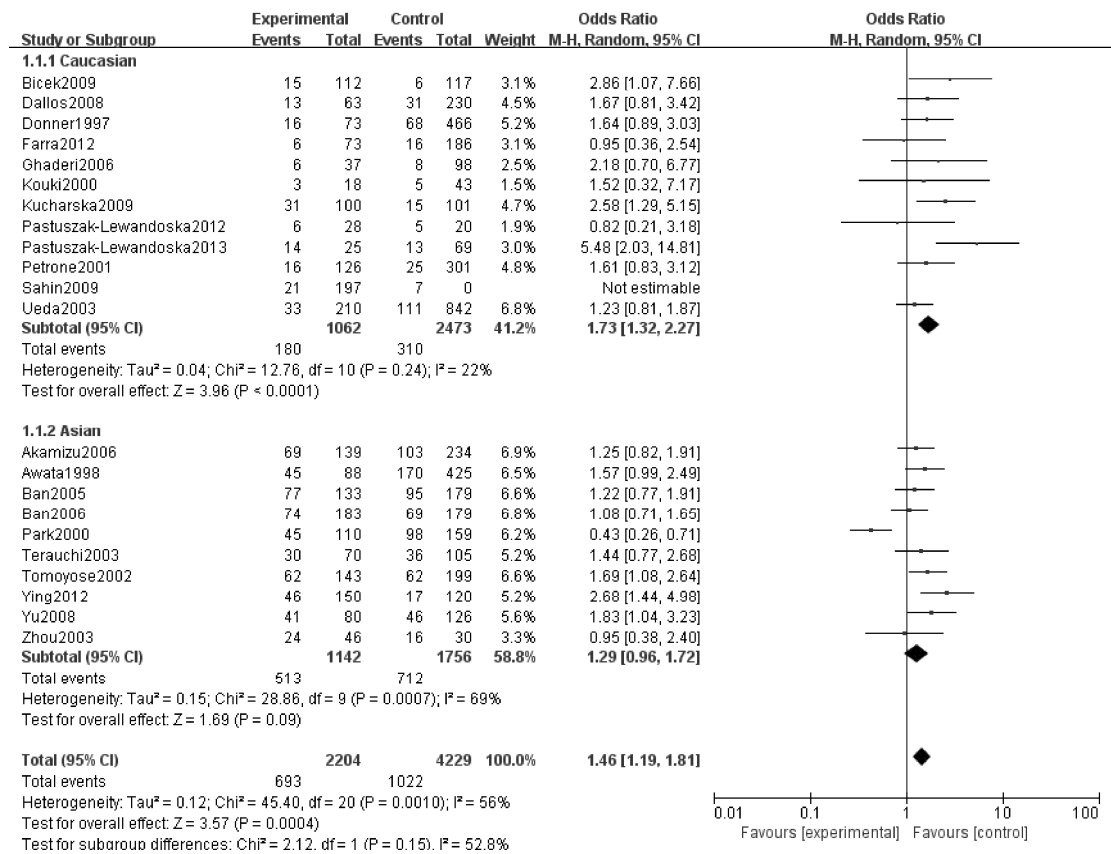


Supplemental Figure 3 Forest plot of the association between an additive model of A49G polymorphism and HT.



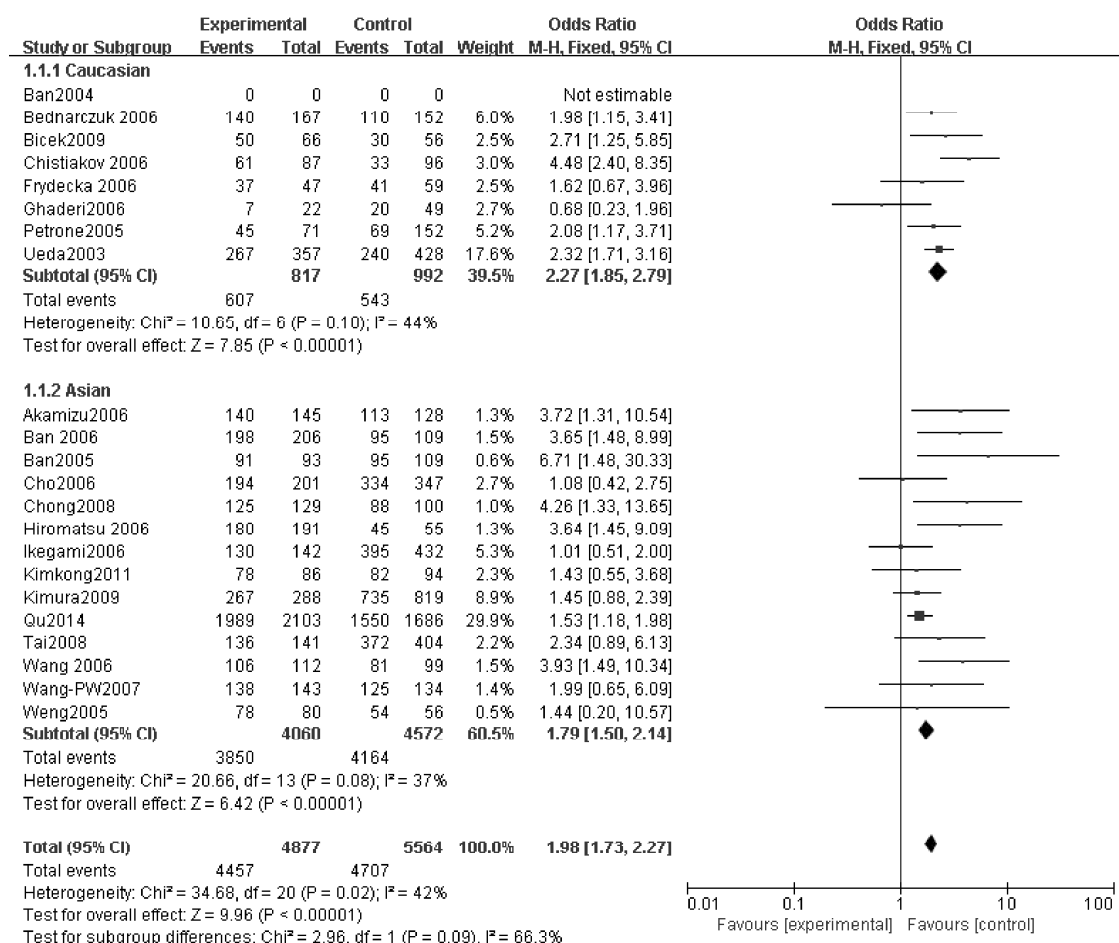
Supplemental Figure 4 Forest plot of the association between a dominant model of A49G

polymorphism and HT.



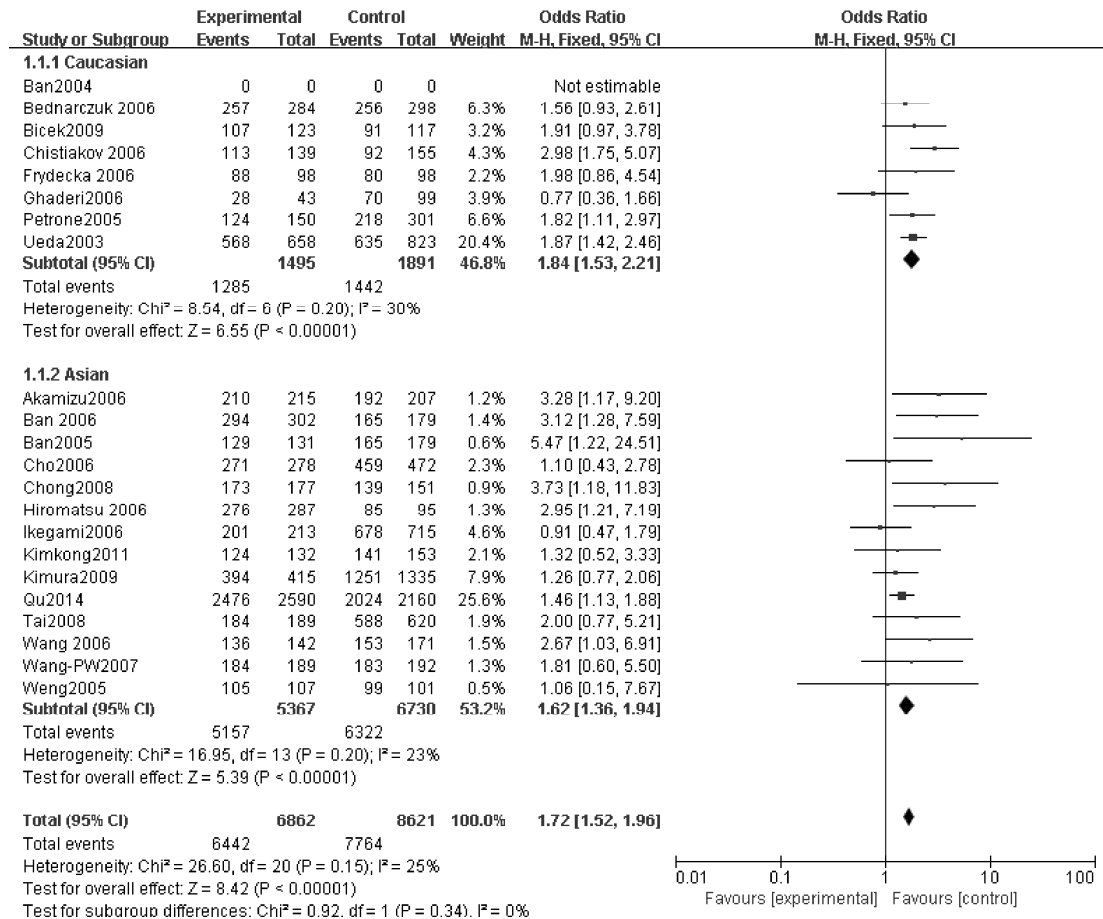
Supplemental Figure 5 Forest plot of the association between a recessive model of A49G

polymorphism and HT.



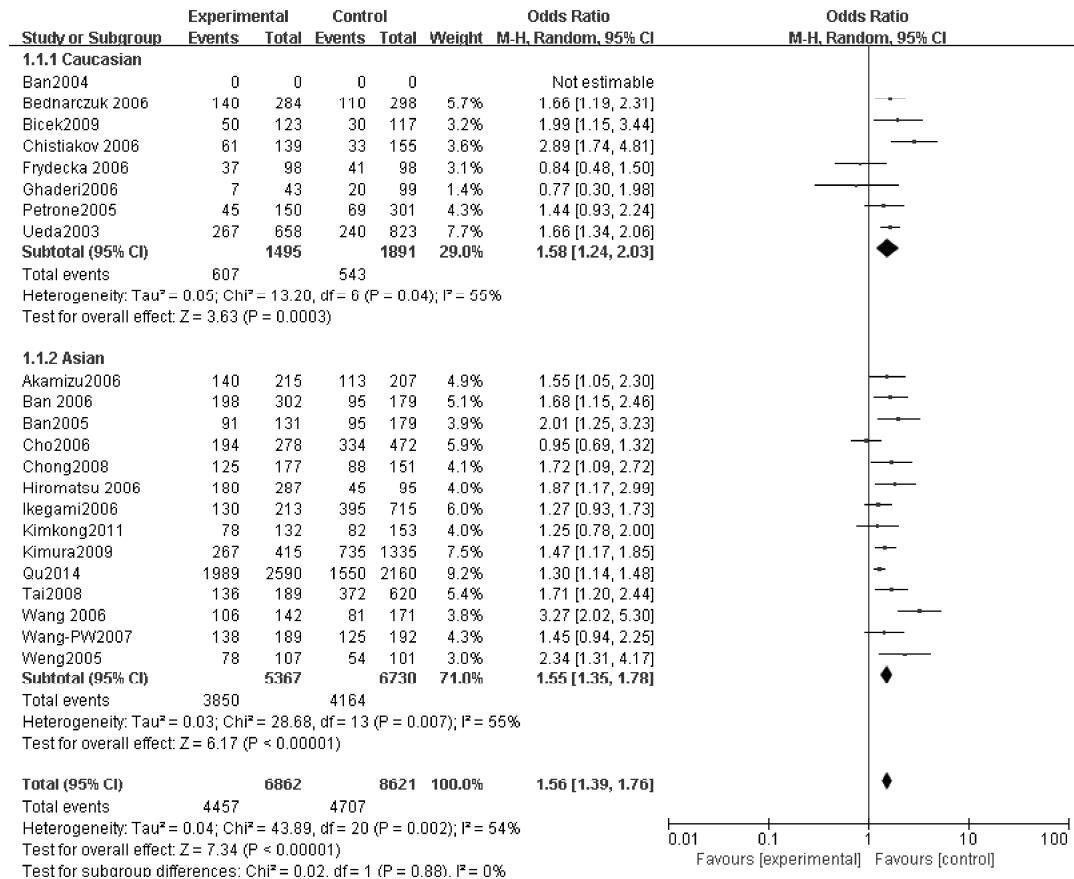
Supplemental Figure 6 Forest plot of the association between an additive model of CT60

polymorphism and GD.

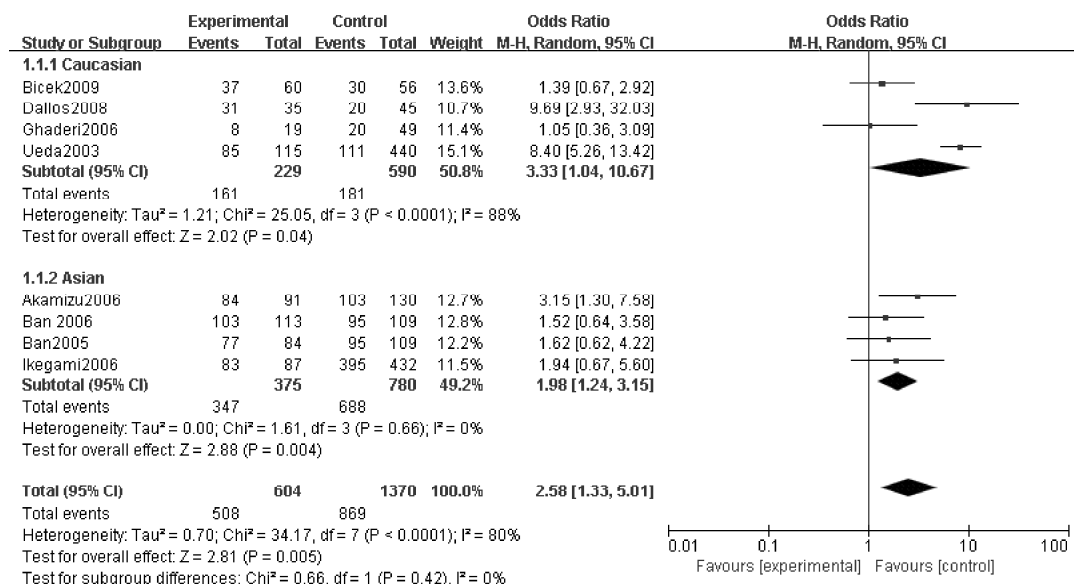


Supplemental Figure 7 Forest plot of the association between a dominant model of CT60 polymorphism and GD.

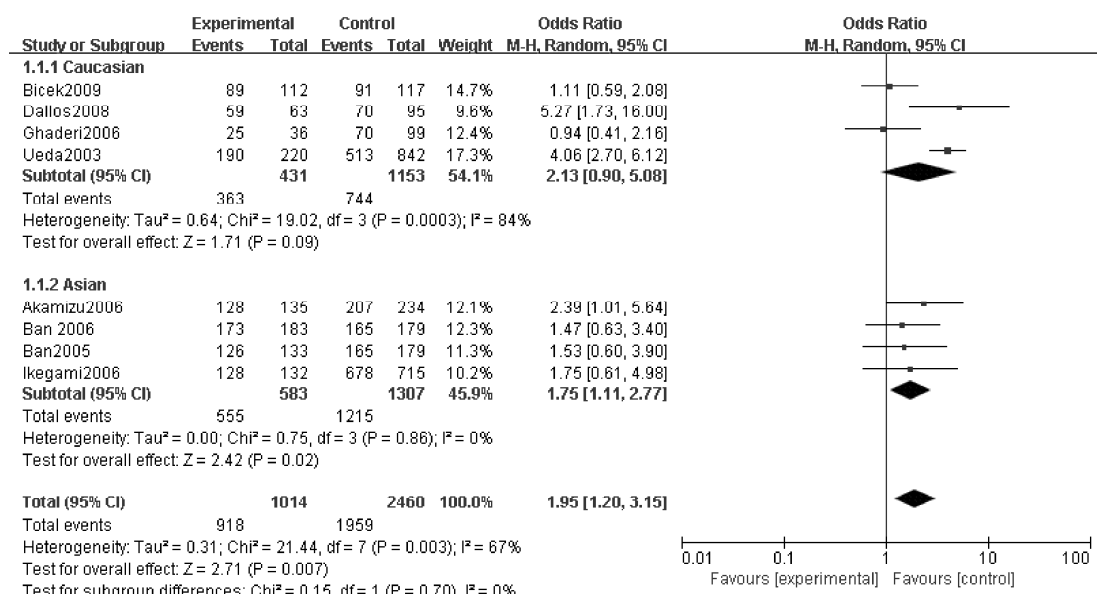




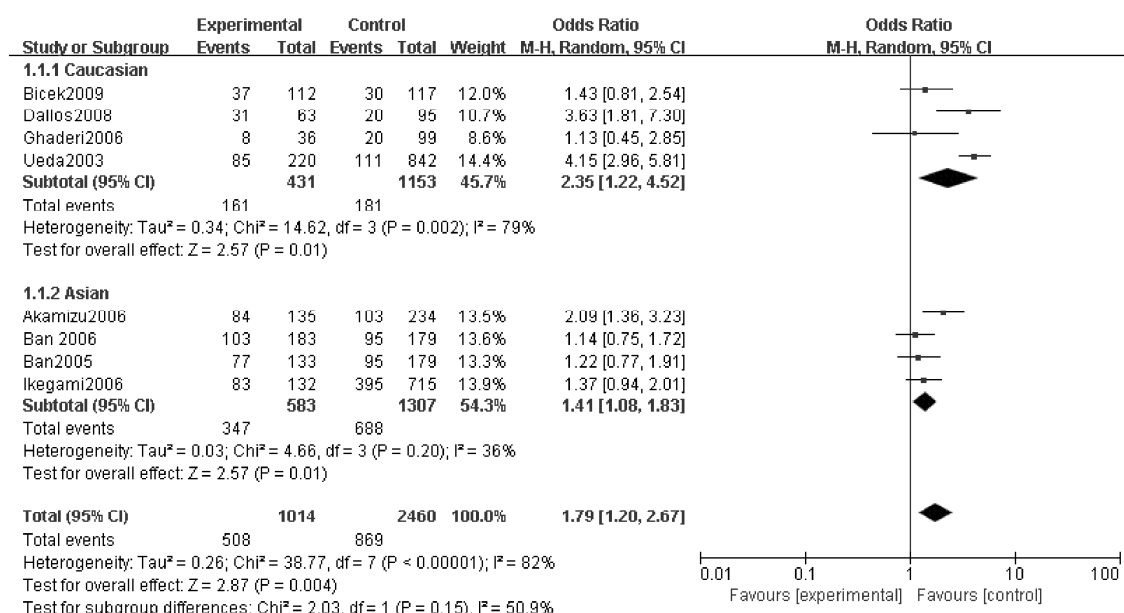
Supplemental Figure 8 Forest plot of the association between a recessive model of CT60 polymorphism and GD.



Supplemental Figure 9 Forest plot of the association between an additive model of CT60 polymorphism and HT.



Supplemental Figure 10 Forest plot of the association between a dominant model of CT60 polymorphism and HT.



Supplemental Figure 11 Forest plot of the association between a recessive model of CT60 polymorphism and HT.