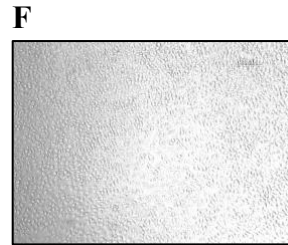
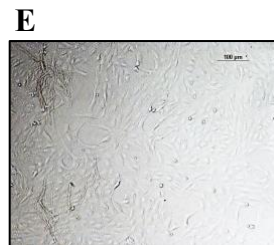
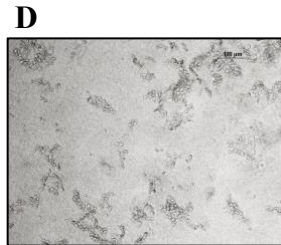
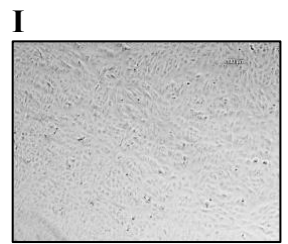
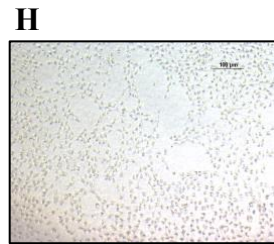
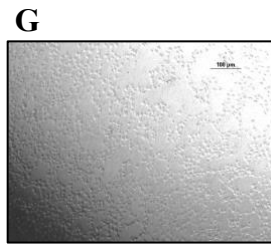


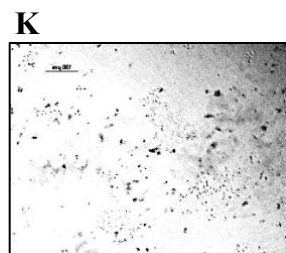
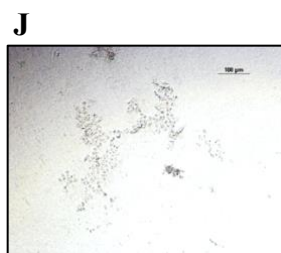
- A. Vero cells with 5620 fecal extract at 1:64 showing CPE  
 B. Vero cells with 5620 fecal extract at 1:64 + Anti-Stx1 antisera showing protection  
 C. Vero cells with 5620 fecal extract at 1:64 + Anti-Stx2 antisera showing protection



- D. Vero cells with 5787 fecal extract at 1:4 showing CPE  
 E. Vero cells with 5787 fecal extract at 1:4 + Anti-Stx1 antisera showing protection  
 F. Vero cells with 5787 fecal extract at 1:4 + Anti-Stx2 antisera showing no protection



- G. Vero cells with 6507 fecal extract at 1:8 showing CPE  
 H. Vero cells with 6507 fecal extract at 1:8 + Anti-Stx1 antisera showing no protection  
 I. Vero cells with 6507 fecal extract at 1:8 + Anti-Stx2 antisera showing protection



- J. Vero cells with 6148 fecal extract at 1:2 showing CPE  
 K. Vero cells with 6148 fecal extract at 1:2 + Anti-Stx1 antisera showing no protection  
 L. Vero cells with 6148 fecal extract at 1:2 + Anti-Stx2 antisera showing no protection

**Supplementary Figure 3. Vero cell cytotoxicity assay with fecal extracts.** Examples of various effects of fecal extracts on Vero cells is shown as described in the inserted legends. Images were captured at 10x magnification using an inverted microscope.