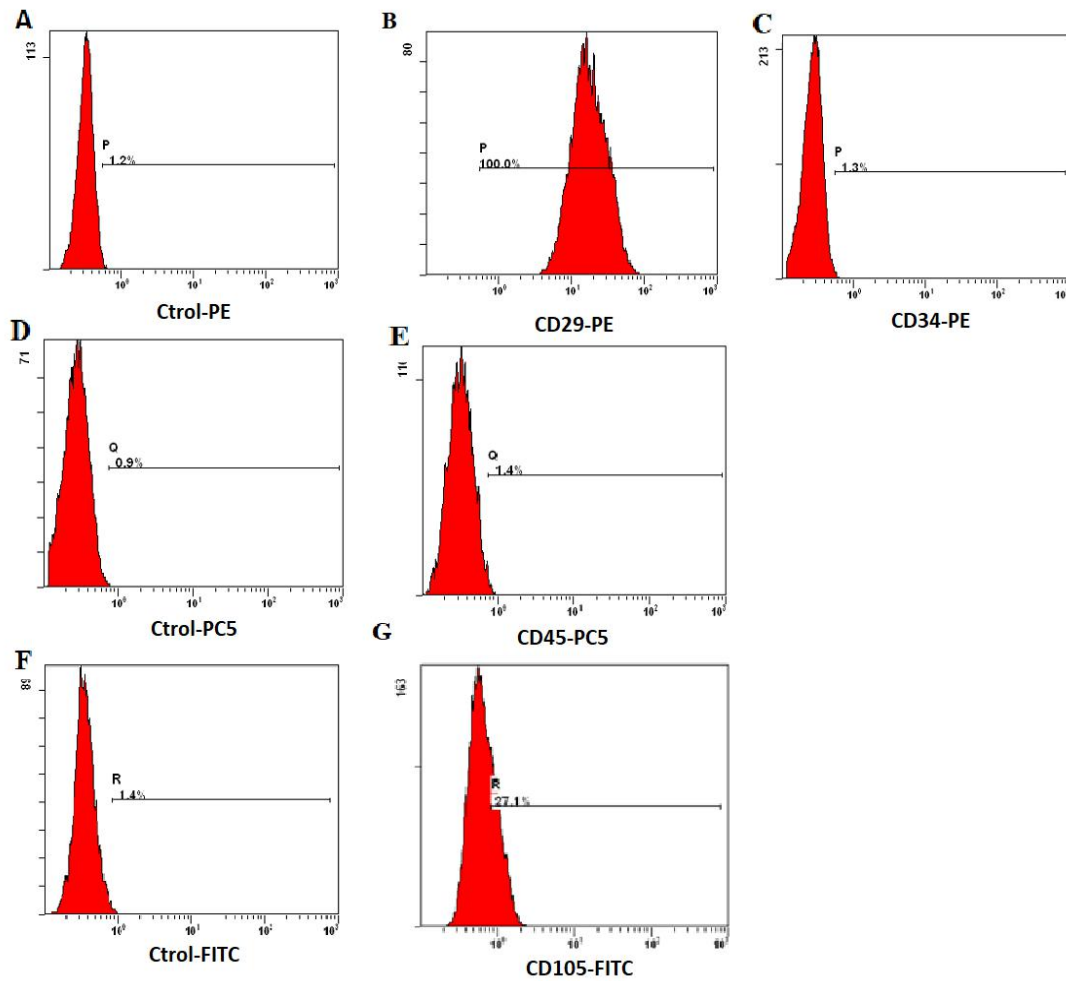


Supplemental Figure: Identification of MSCs' phenotype by flow cytometry.



Histograms showed levels of surface antigen expression and their corresponding isotype controls. On the surface of MSCs, the expression of CD29, CD105 were positive, the expression of CD34, CD45 were negative.

A: isotype-PE control; B: MSCs marker CD29-PE (positive); C: CD34-PE; D: Isotype-PE-CY5 control; E:CD45-PE-CY5; F:Isotype-FITC-control; G: MSC-CD105 (positive).

Bone marrow mesenchymal stem cells=MSCs