

**Electronic Supplementary Information (ESI) for**

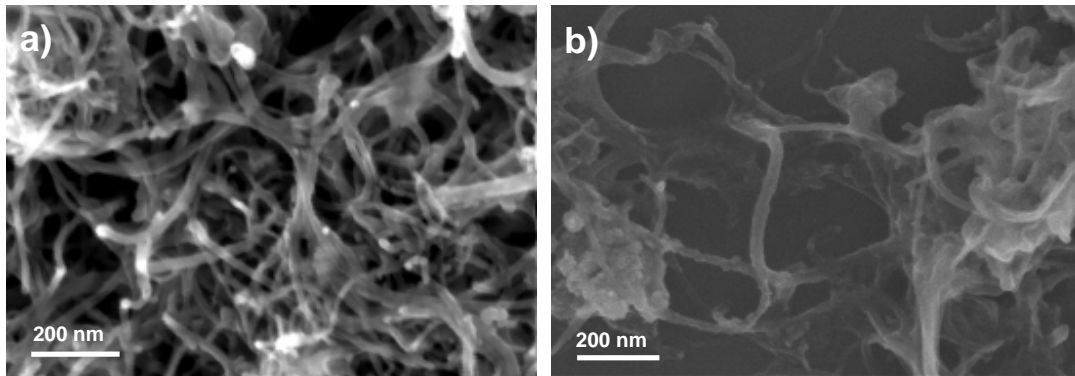
**“Synthesis of Fe<sub>3</sub>O<sub>4</sub>/Pt nanoparticles decorated carbon nanotubes  
and their use as magnetically recyclable catalysts”**

Hongkun He and Chao Gao<sup>\*</sup>

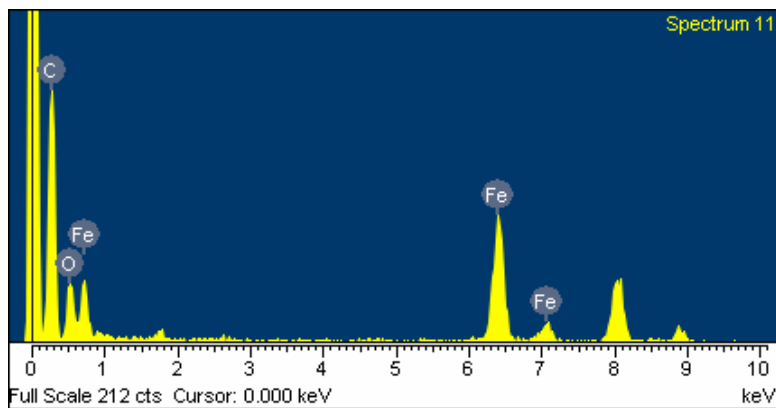
MOE Key Laboratory of Macromolecular Synthesis and Functionalization, Department  
of Polymer Science and Engineering, Zhejiang University, 38 Zheda Road, Hangzhou  
310027, P. R. China.

\*Corresponding author, [chaogao@zju.edu.cn](mailto:chaogao@zju.edu.cn)

**Figure S1.** SEM images of p-MWNTs (a), m-MWNTs with feed ratios of 1/1(b).

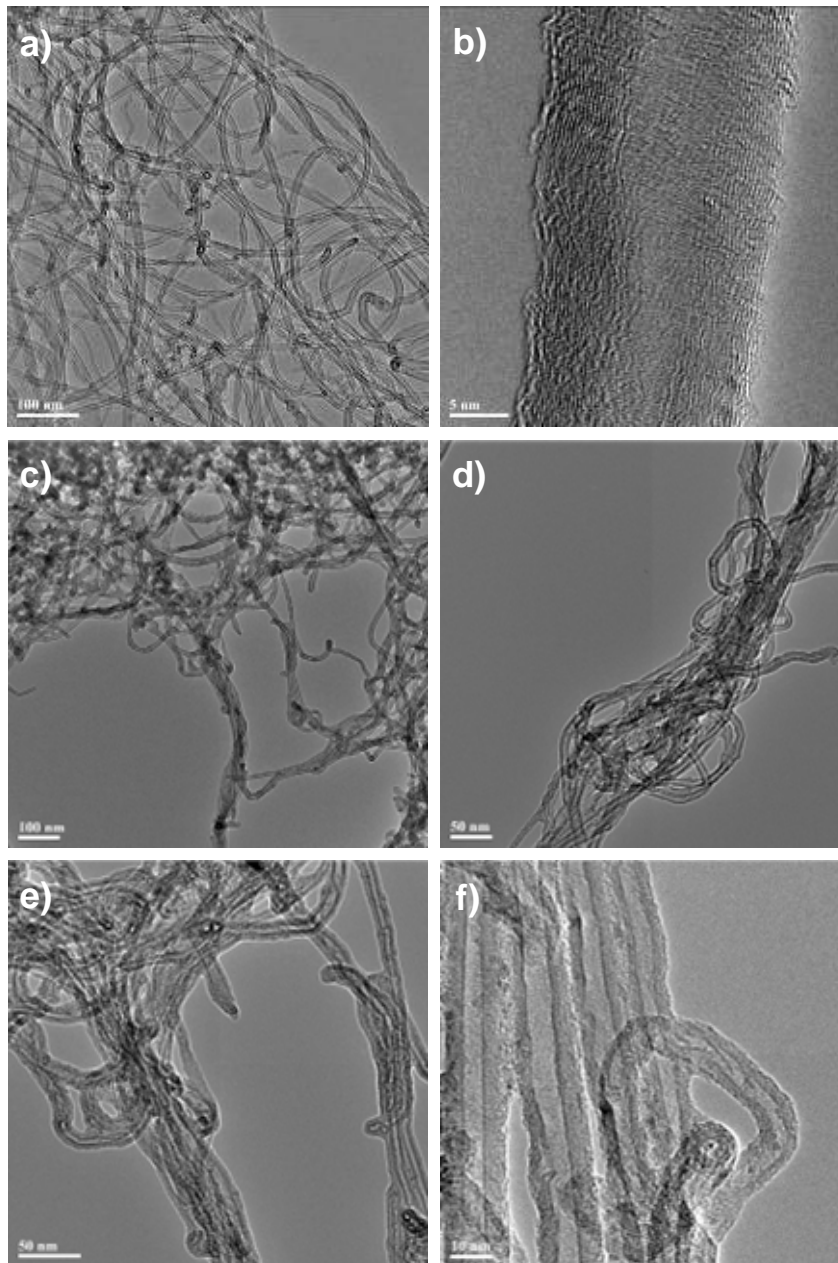


**Figure S2.** The EDS spectra of m-MWNTs.

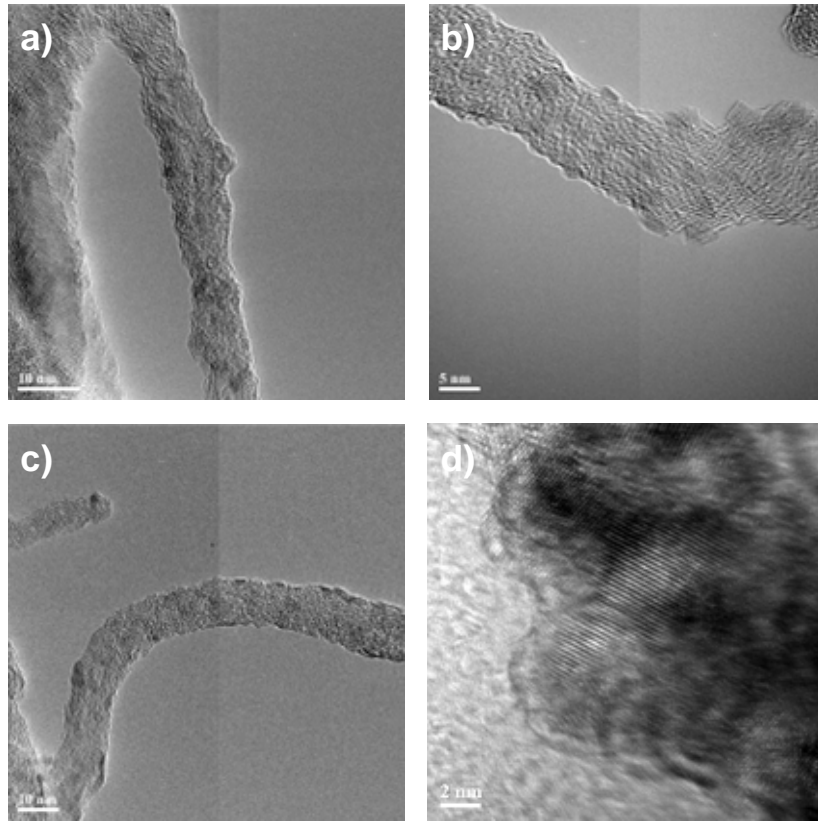


| Element | Weight% | Atomic% |
|---------|---------|---------|
| C       | 57.34   | 79.24   |
| O       | 10.91   | 11.32   |
| Fe      | 31.76   | 9.44    |
|         |         |         |
| Totals  | 100.00  | 100.00  |

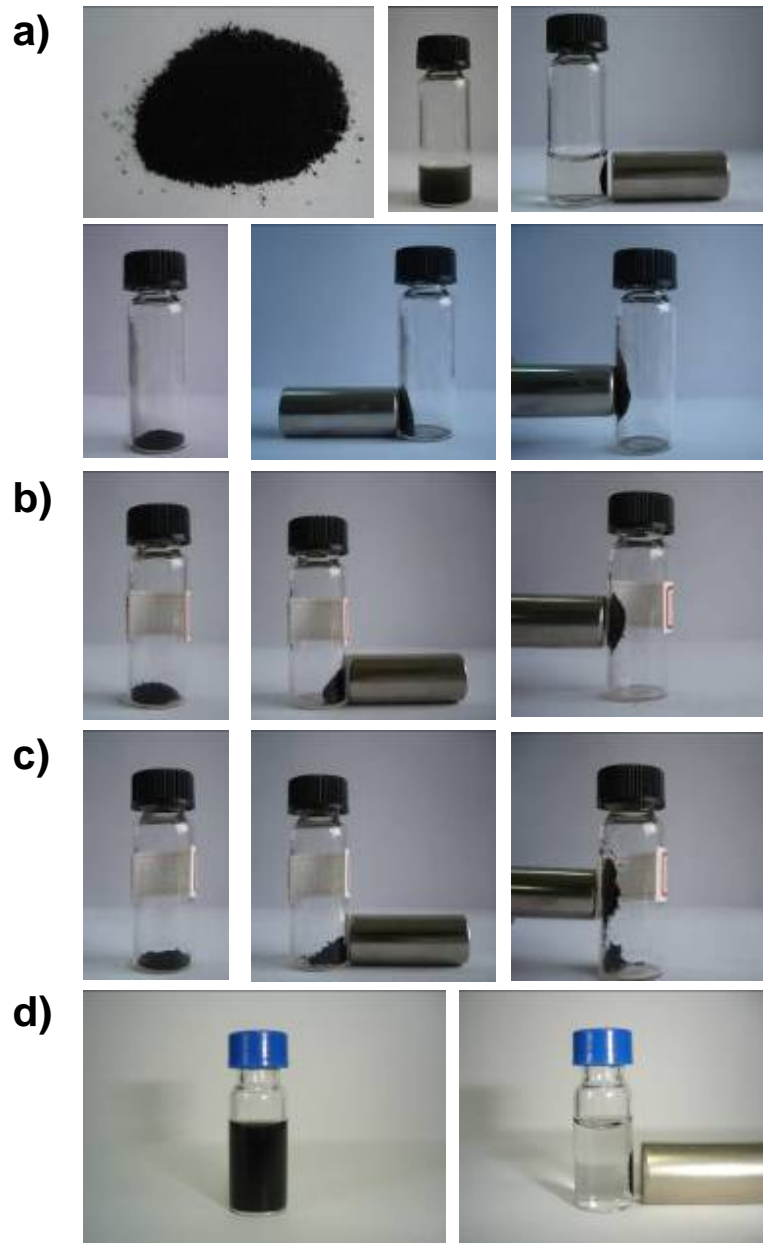
**Figure S3.** TEM images of p-MWNTs (a, b), and the samples prepared in the control experiment using p-MWNTs instead of MWNTs-COOH as the templates (c-f).



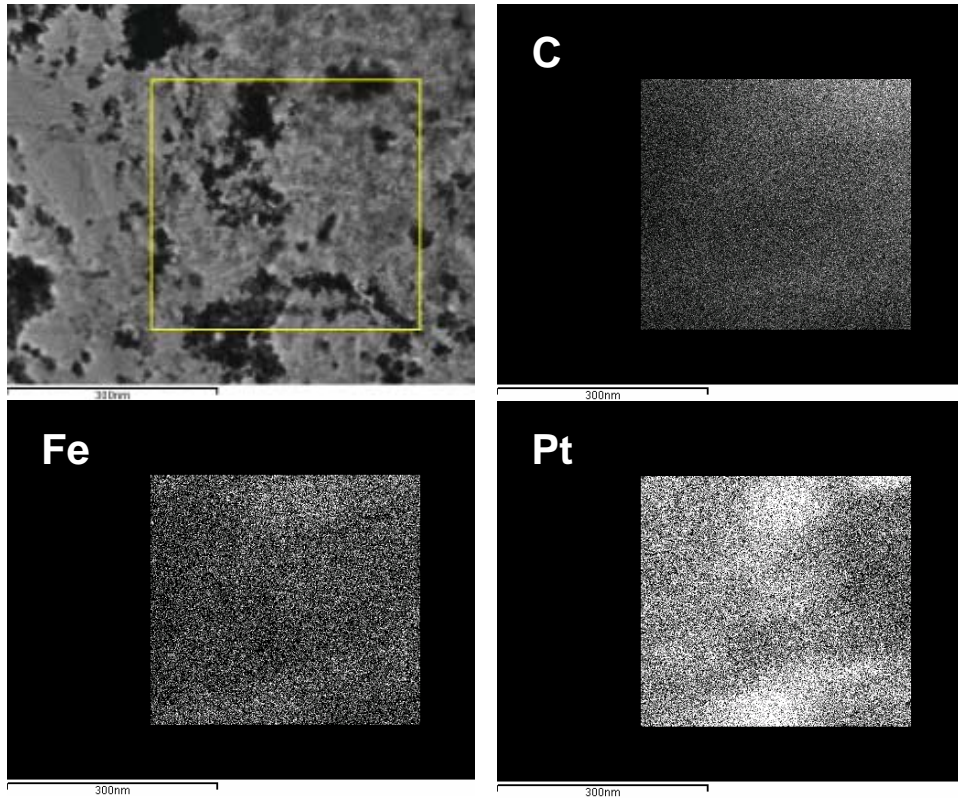
**Figure S4.** TEM images of the samples prepared in the control experiment using oxidized-MWNTs instead of MWNTs-COOH as the templates.



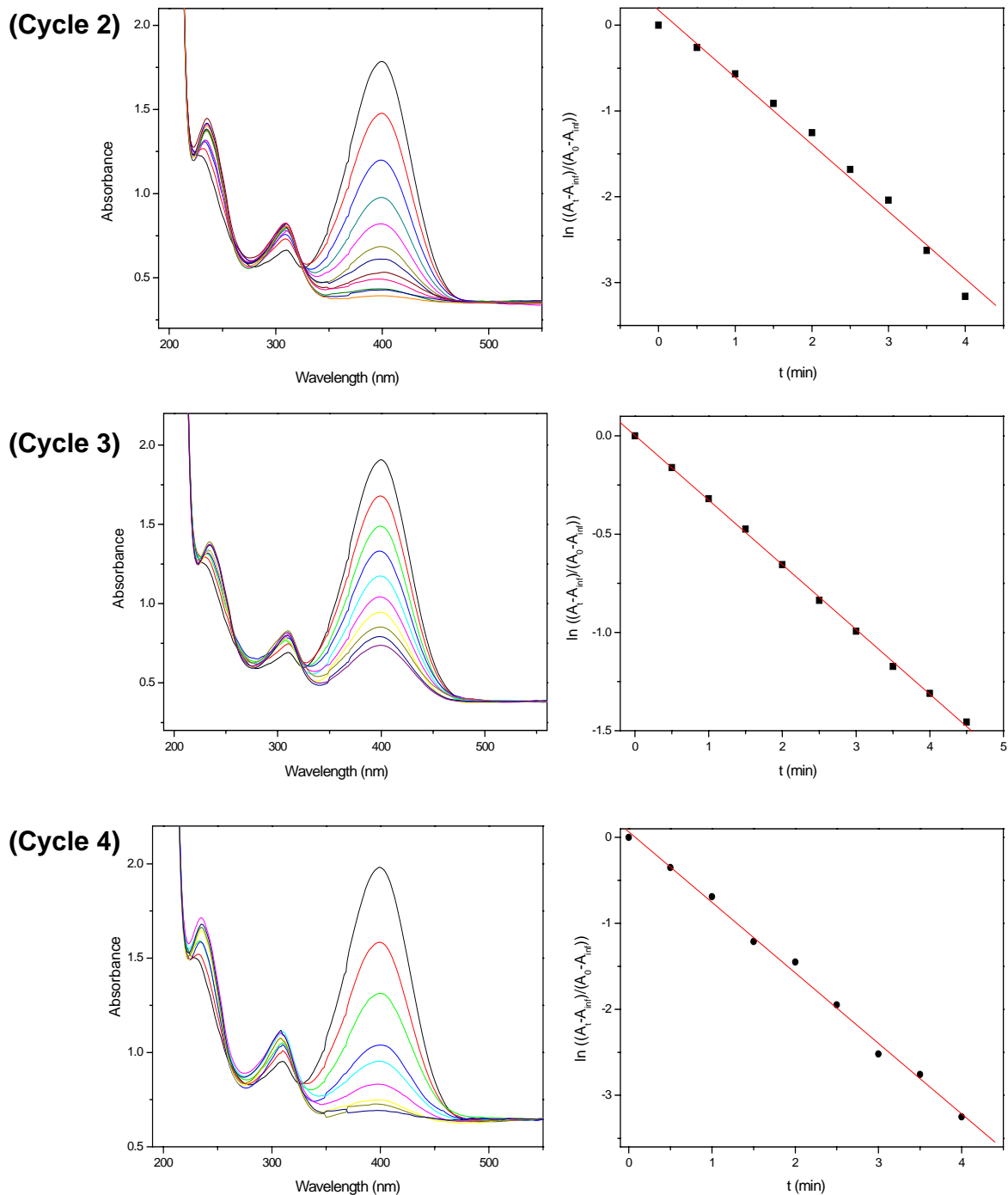
**Figure S5.** The photographs of m-MWNTs with feed ratios of 5/1(a), 1/1 (b), and 0.2/1 (c), and m-MWNTs@Pt (d).



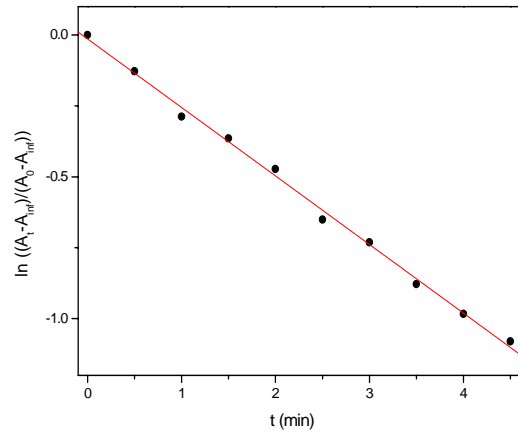
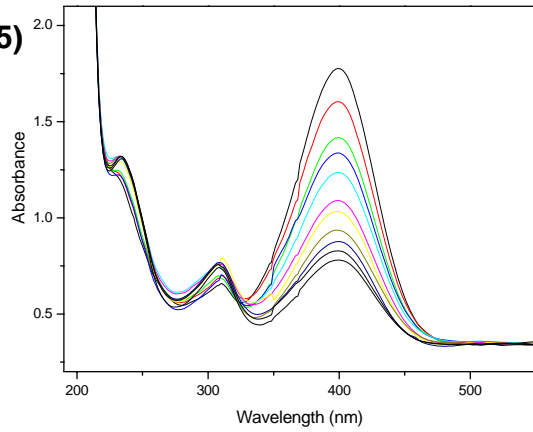
**Figure S6.** The element mapping of m-MWNTs@Pt: bright field, carbon, iron, and platinum maps.



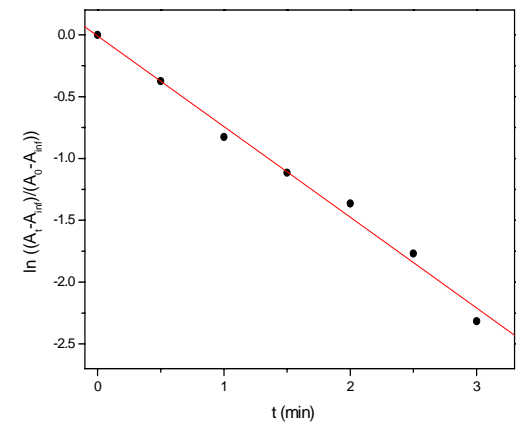
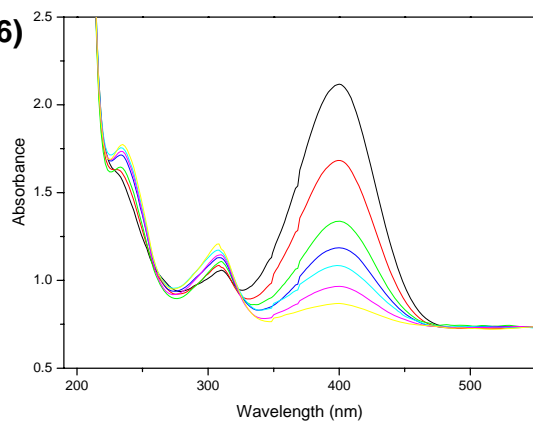
**Figure S7.** The results of the reduction of 4-nitrophenol into 4-aminophenol with the catalyst of m-MWNTs@Pt for cycles 2-15: (the the left column) successive UV-vis spectra; (the right column) the linearized data for first-order analysis.



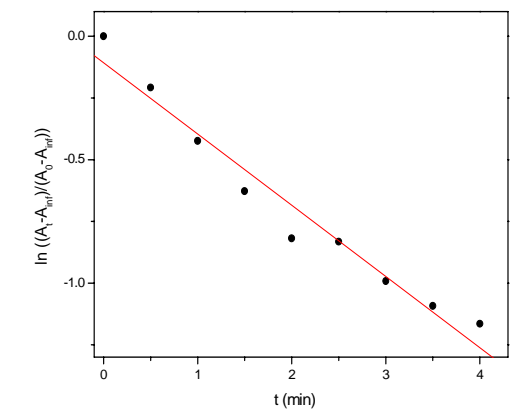
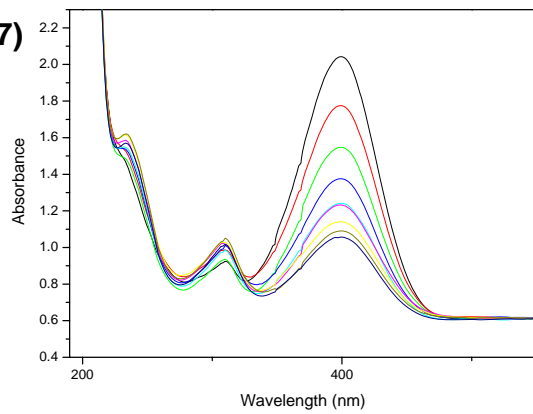
**(Cycle 5)**



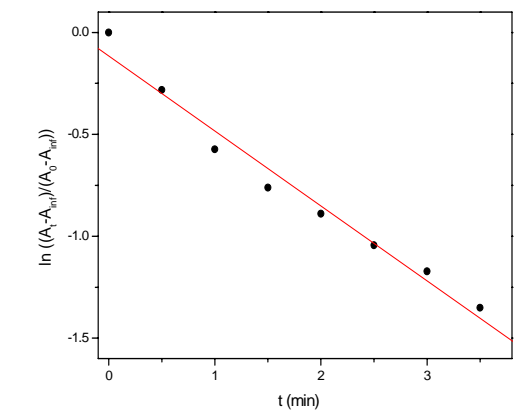
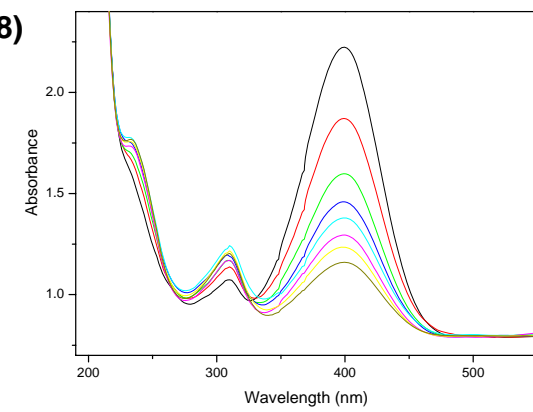
**(Cycle 6)**



**(Cycle 7)**

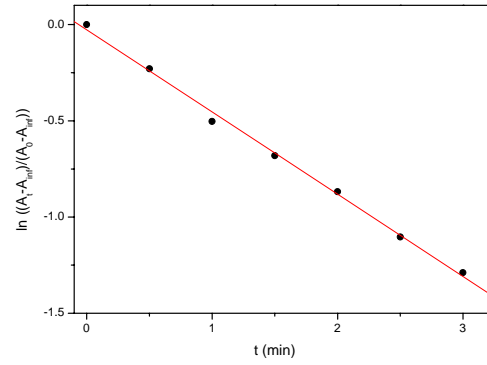
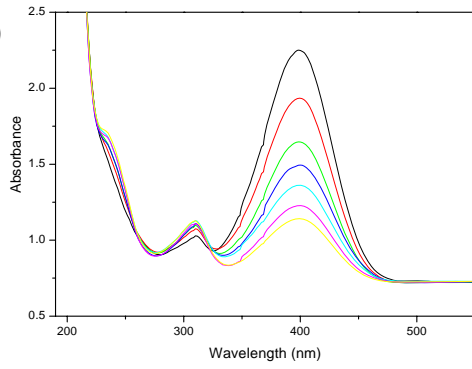


**(Cycle 8)**

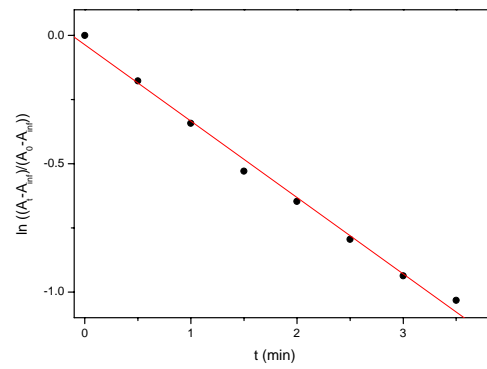
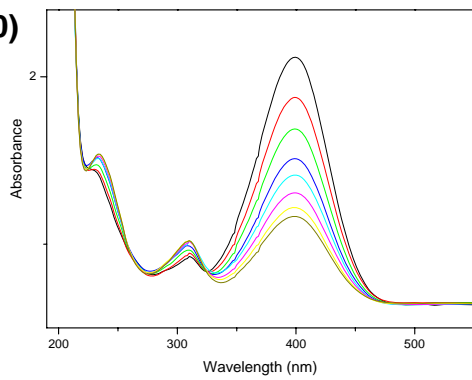




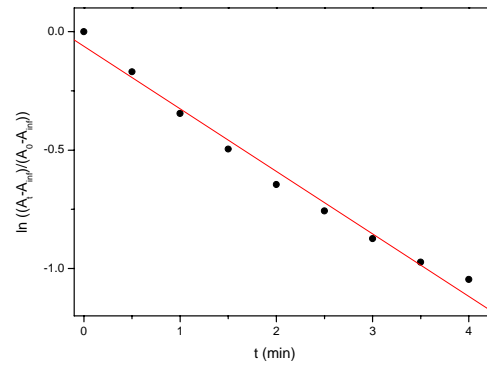
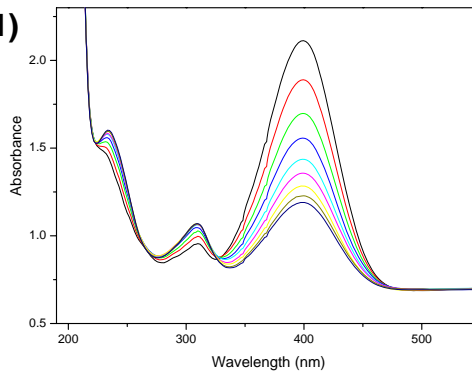
**(Cycle 9)**



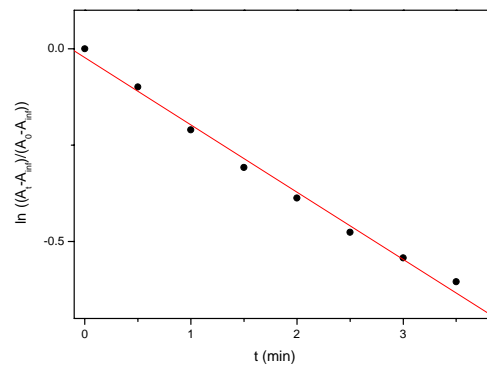
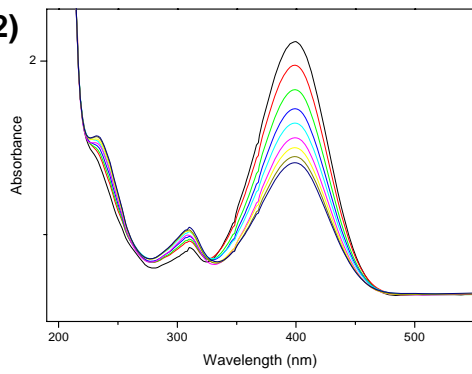
**(Cycle 10)**



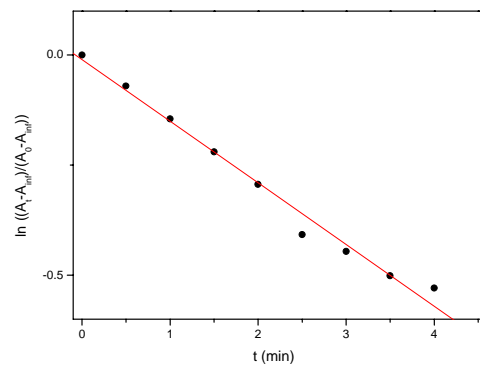
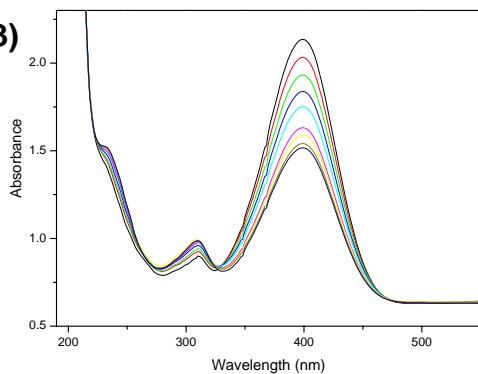
**(Cycle 11)**



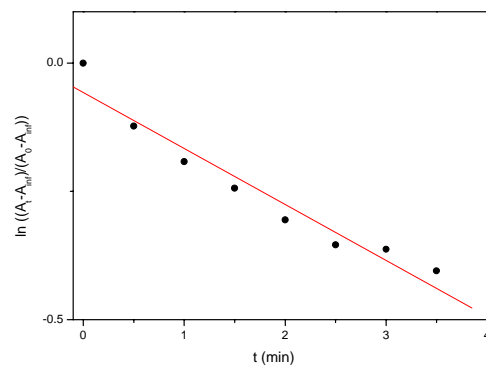
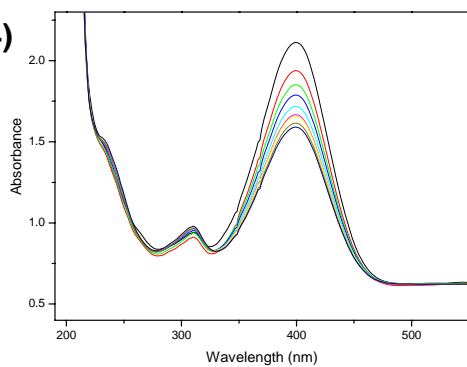
**(Cycle 12)**



**(Cycle 13)**



**(Cycle 14)**



**(Cycle 15)**

