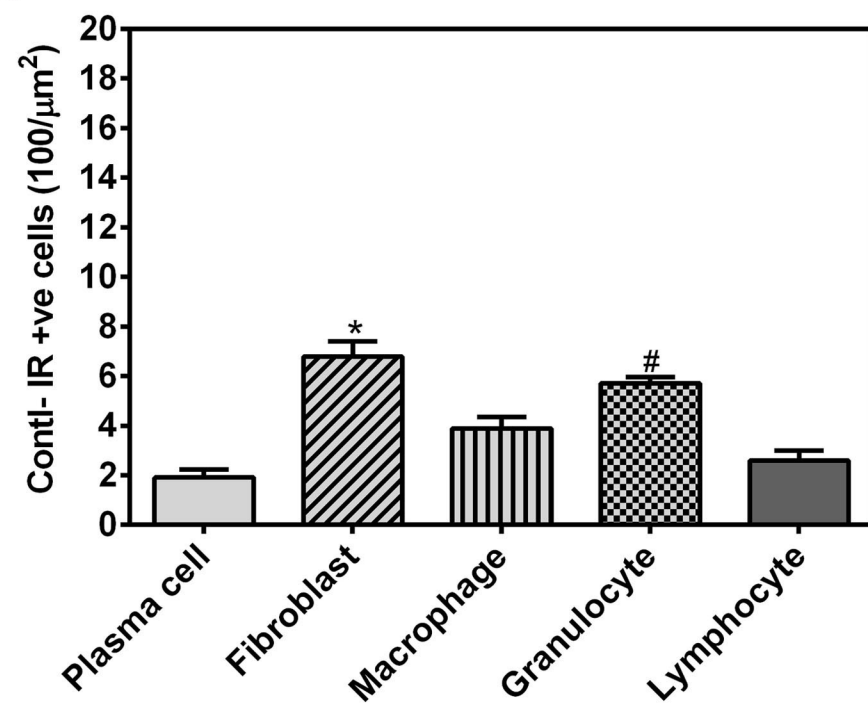
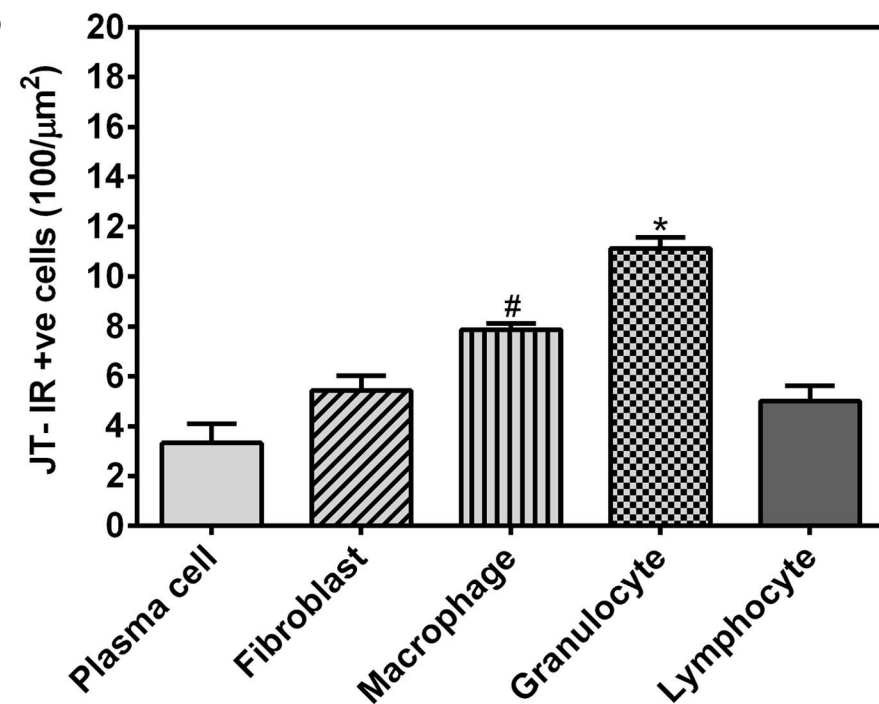
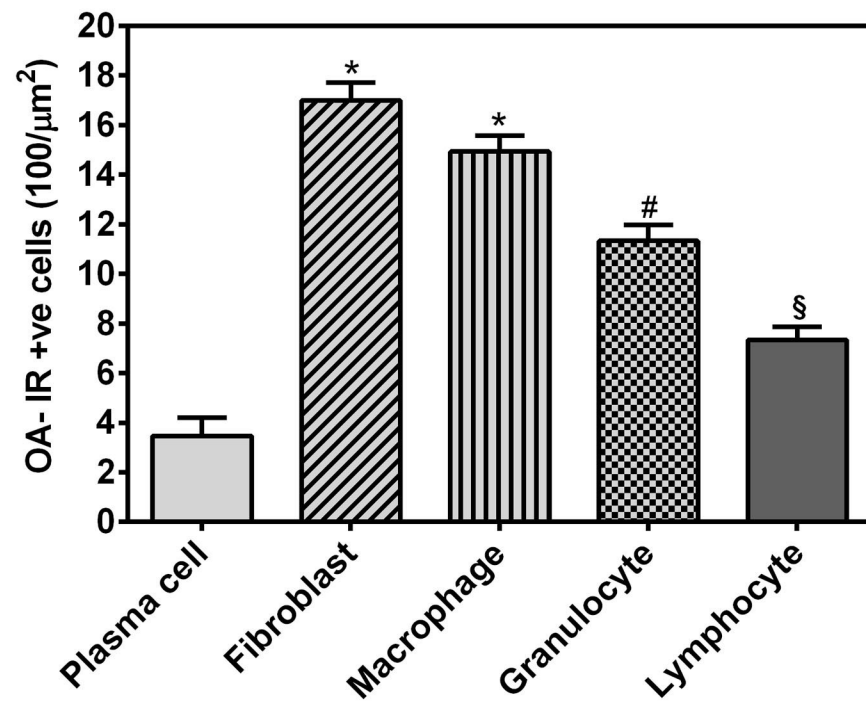
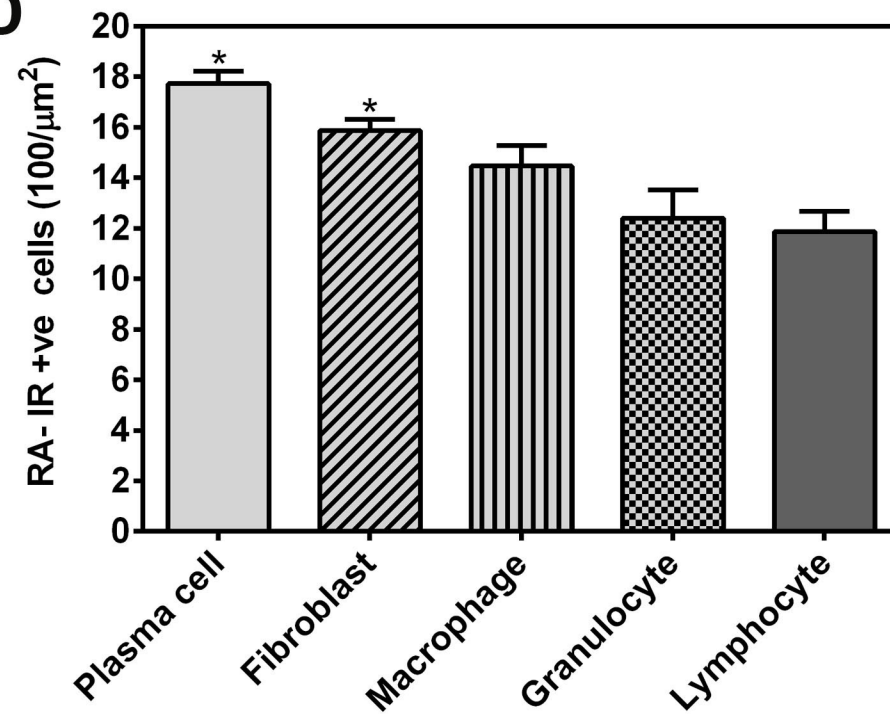


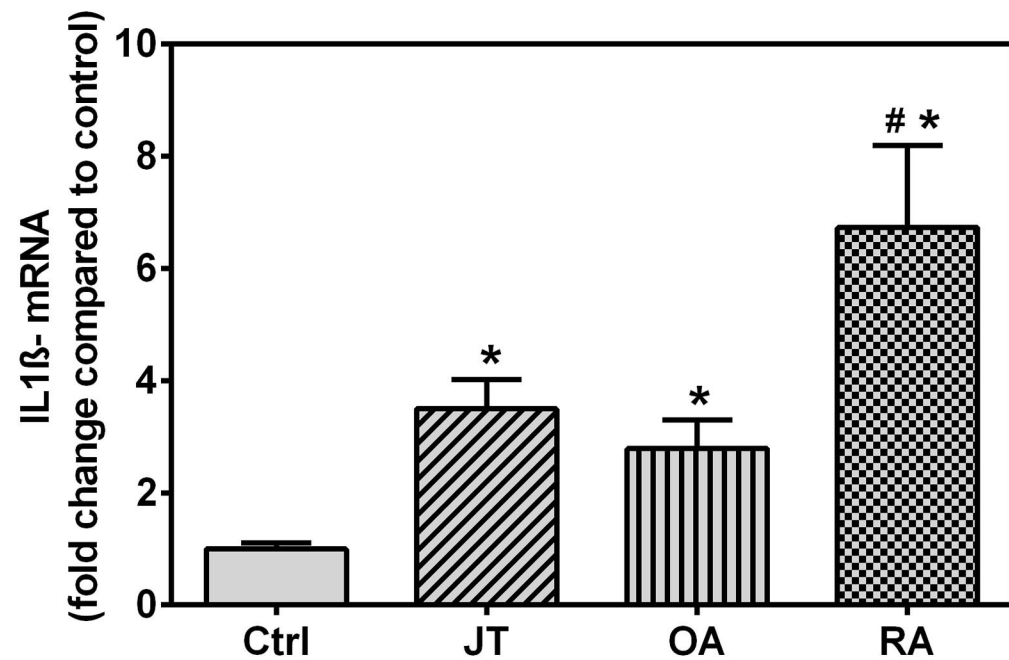
Supplement Table 1

| Antigen | Manufacturer, Species, Type, Catalogue Number | DILUTION |
|---------------------------|---|----------|
| COX-2 | Abcam; Cambridge, UK Polyclonal Rabbit IgG Anti-human # ab6665 | 1:400 |
| FPRL1 | Abcam, Cambridge, UK Polyclonal Rabbit IgG Anti-human # ab101702 | 1:200 |
| EP1, EP2, EP4, EP4 | A gift from Dr. R. Nüsing, Institute of clinical pharmacology, Johann Wolfgang Goethe University, Frankfurt, Germany Polyclonal Rabbit IgG Anti-human | 1:300 |
| COX-2 | BD Transduction Laboratories; MD, USA Monoclonal Mouse IgM Anti-huma # Nr.610203; | 1:300 |
| 15-LOX | Abnova, Taipei, Taiwan Monoclonal Mouse IgG2a Anti-human # 12080- 3D8 | 1:100 |
| IL-1 β | Santa Cruz Biotechnology, INC. USA polyclonal Goat IgG against human #M-20; SC-1251 | 1:200 |
| TNF α | Santa Cruz Biotechnology, INC. USA Polyclonal Goat IgG against human # C-20; SC-1347 | 1:100 |
| 5- LOX | Santa Cruz Biotechnology, INC. USA polyclonal Goat IgG against human # N-19; SC-8885 | 1:200 |
| CD15 | Dako; Glostrup. Denmark Monoclonal Mouse IgM against human # Clone C3D-1; Nr. M0733 | 1:200 |
| CD68 | Dako; Glostrup. Denmark Monoclonal Mouse IgG against human # M 0814 clone KP1(macrophages) | 1:200 |
| Prolyl-4-Hydroxylase beta | Acris Antibodies, Inc., San Diego, CA, USA Monoclonal Mouse IgG1 against human # Clone 3-2B12 | 1:400 |
| Plasma cell Ab-1 | Lab vision, CA, USA Monoclonal Mouse IgG2a against human # Clone LIV3G11 | 1:500 |

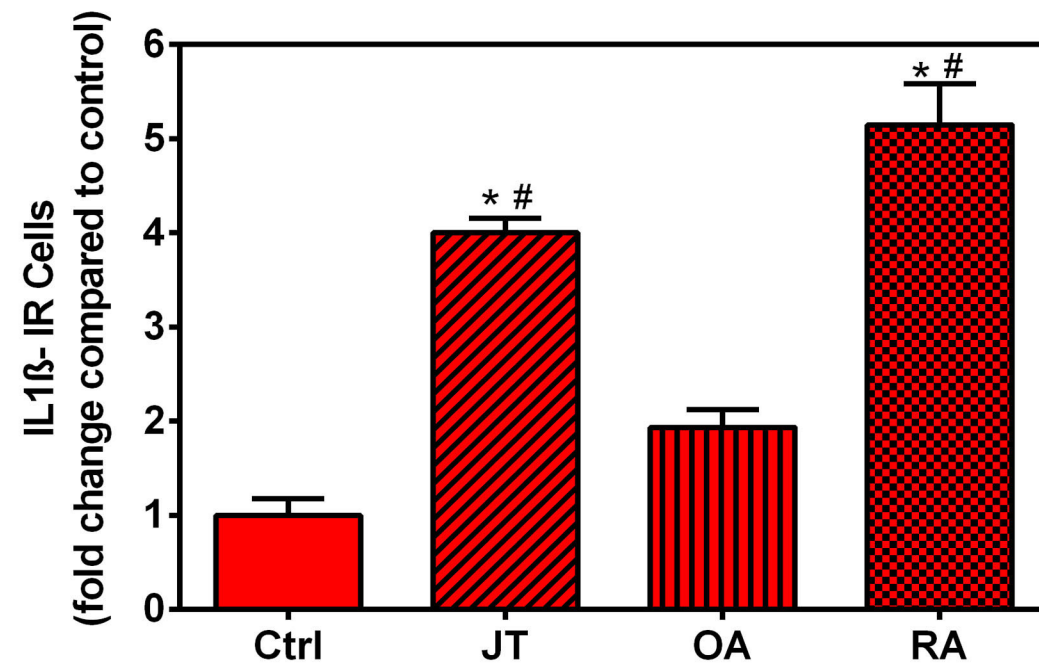
A**B****C****D**

Supplement Figure 2

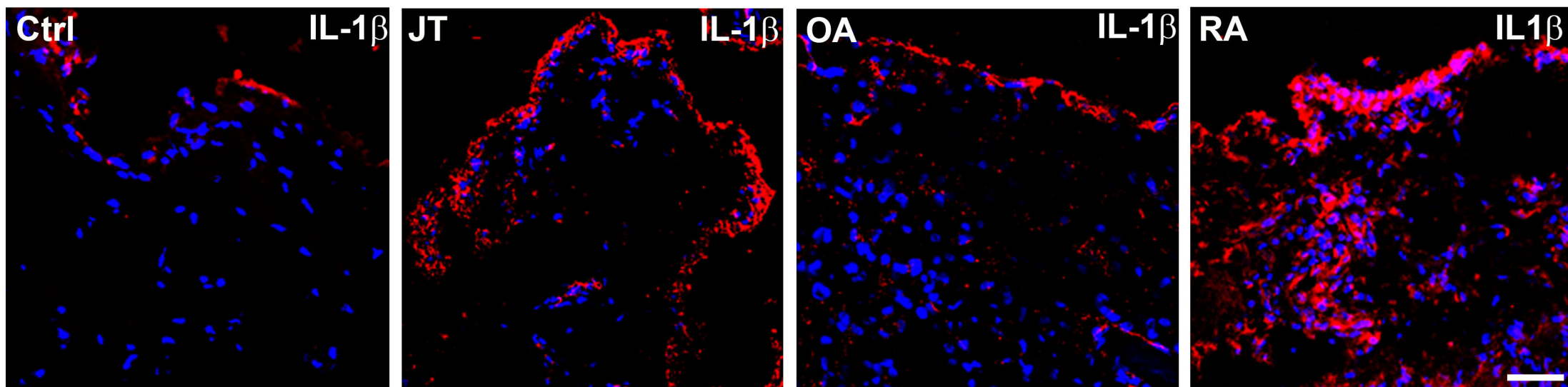
A



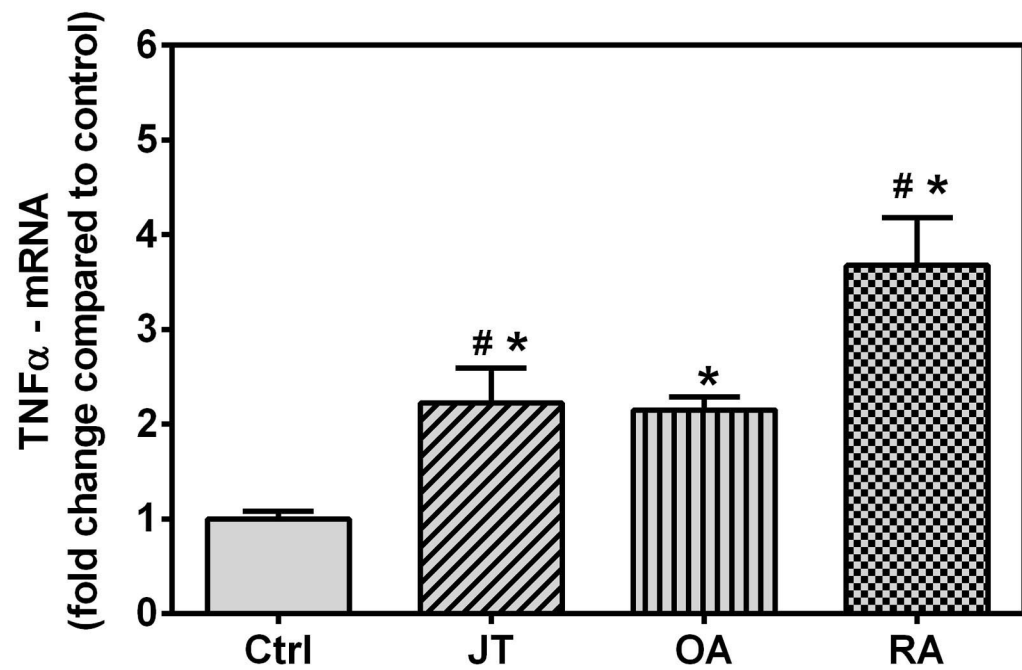
B



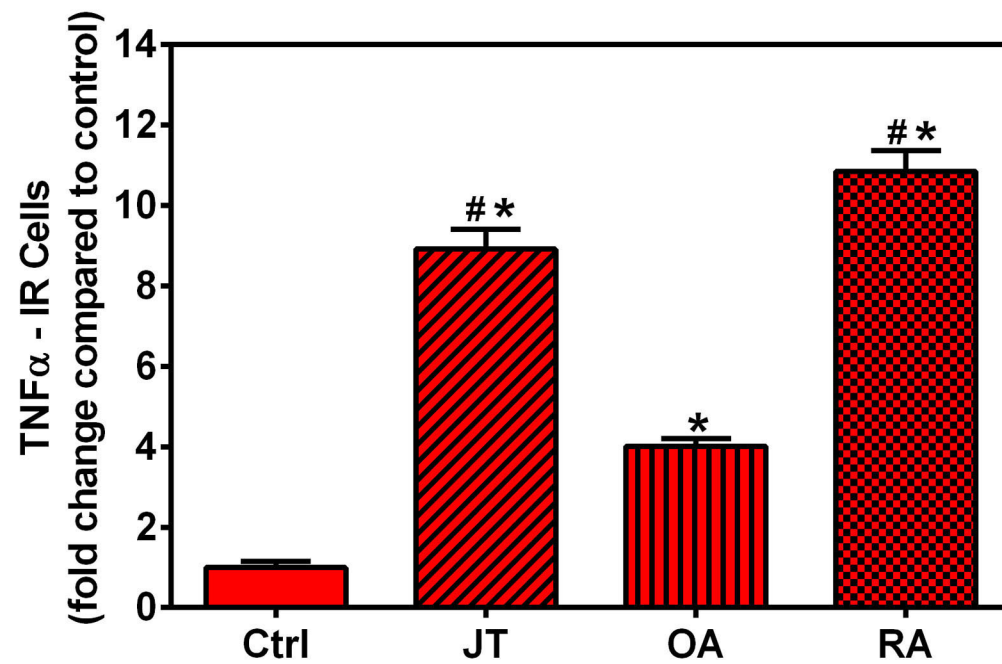
C



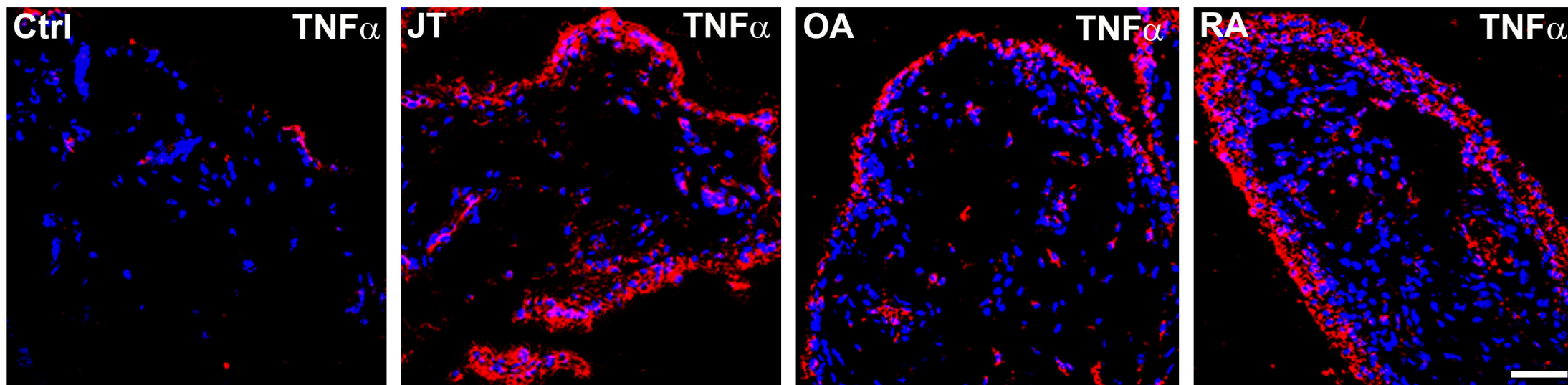
A



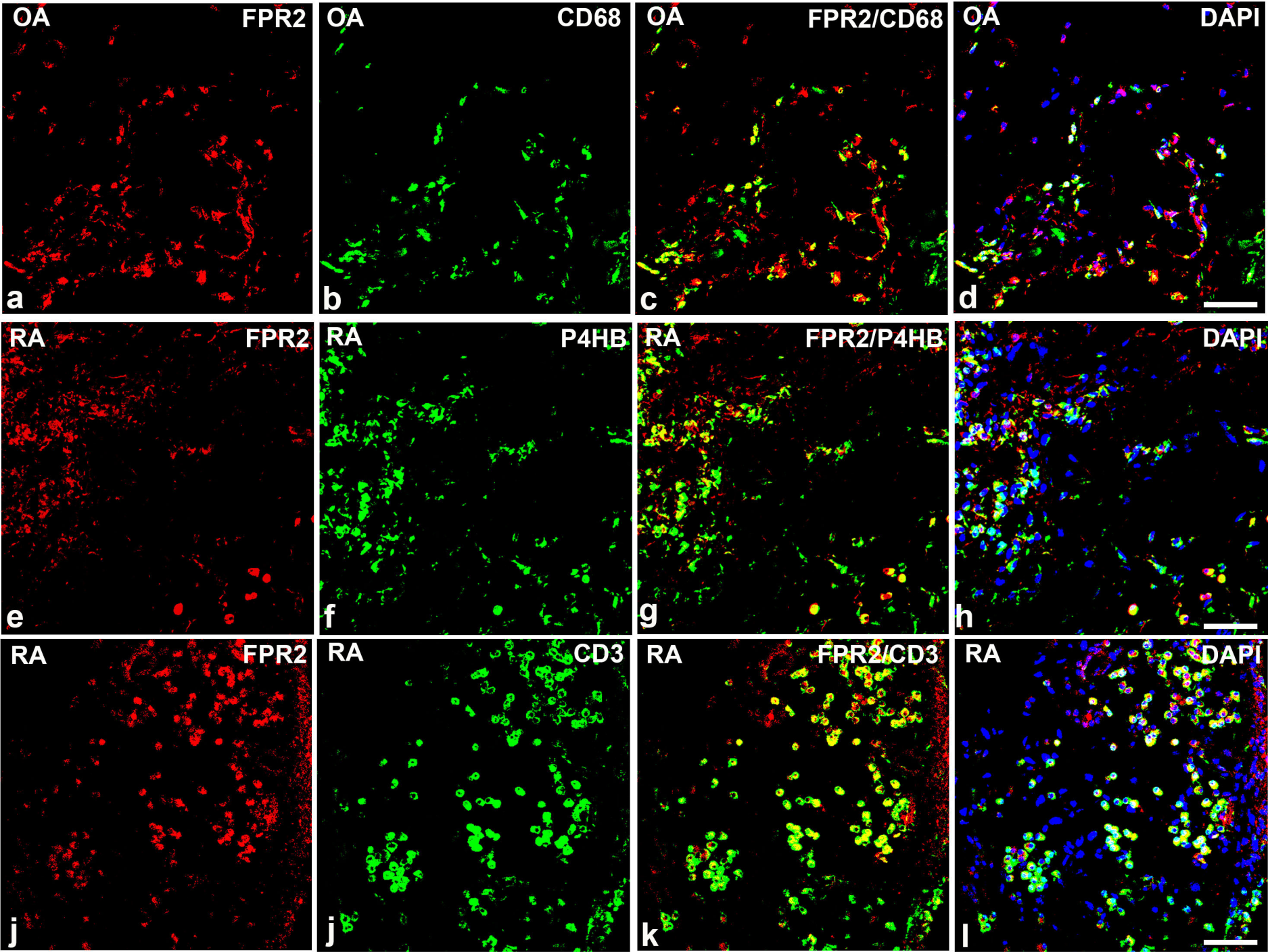
B



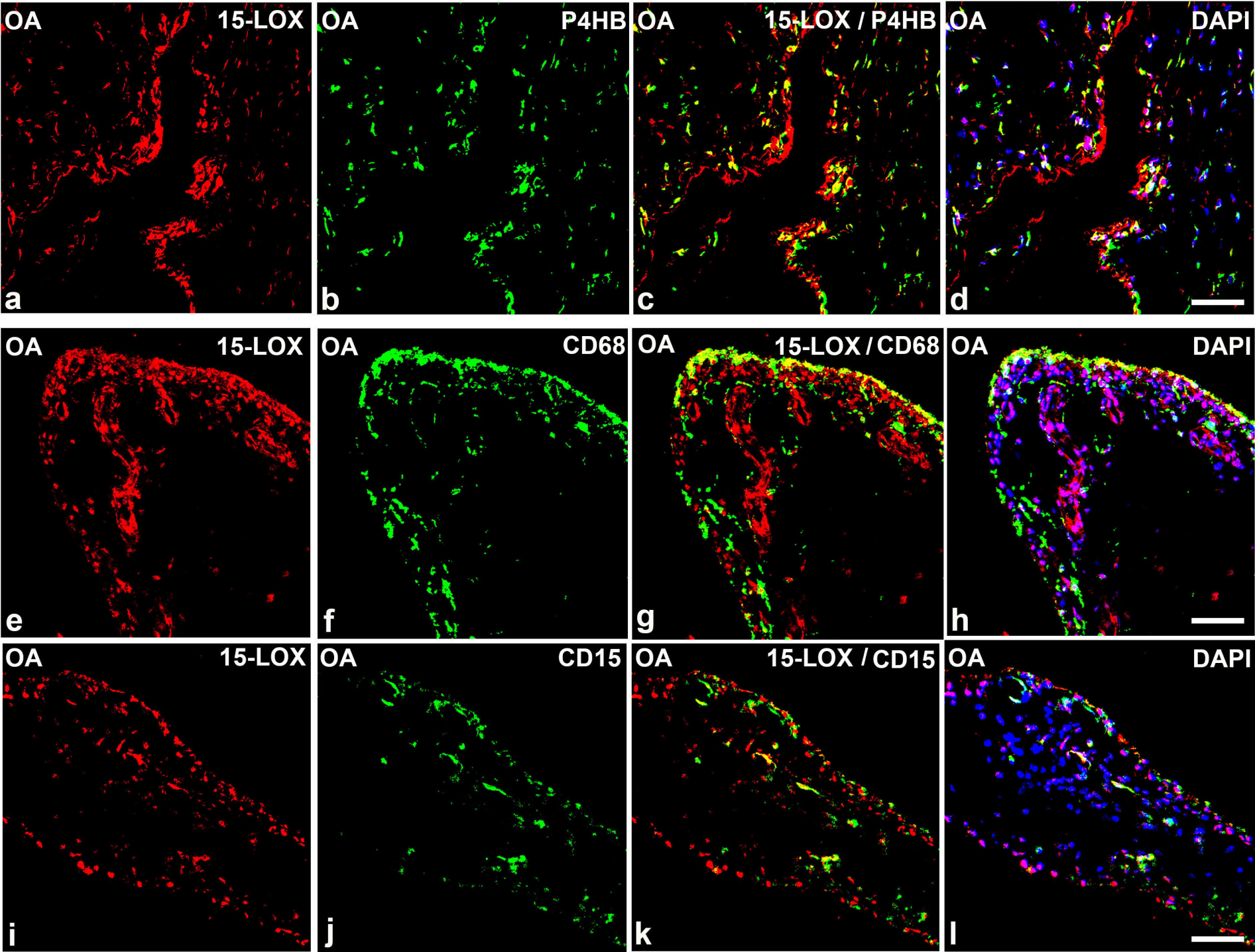
C



Supplement Figure 4



Supplement Figure 5



Supplement Figure 6

