

# **Selenoprotein S Attenuates Tumor Necrosis Factor- $\alpha$ Induced Dysfunction in Endothelial Cells**

**Siyuan Cui<sup>1</sup>, Lili Men<sup>1</sup>, Yu Li<sup>1</sup>, Yingshuo Zhong<sup>1</sup>, Shanshan Yu<sup>1</sup>, Fang Li<sup>2</sup>, Jianling Du<sup>1</sup>**

<sup>1</sup> Department of Endocrinology, The First Affiliated Hospital of Dalian Medical University,  
Dalian 116000, Liaoning, China

<sup>2</sup> Department of Immunology, Dalian Medical University, Dalian 116000, Liaoning, China

The Corresponding authors' email: Fang Li, [lifang16@hotmail.com](mailto:lifang16@hotmail.com). Jianling Du, [dujianlingcn@163.com](mailto:dujianlingcn@163.com). Jianling Du is the first corresponding author.

**Disclosure statement:** The authors have nothing to disclose.

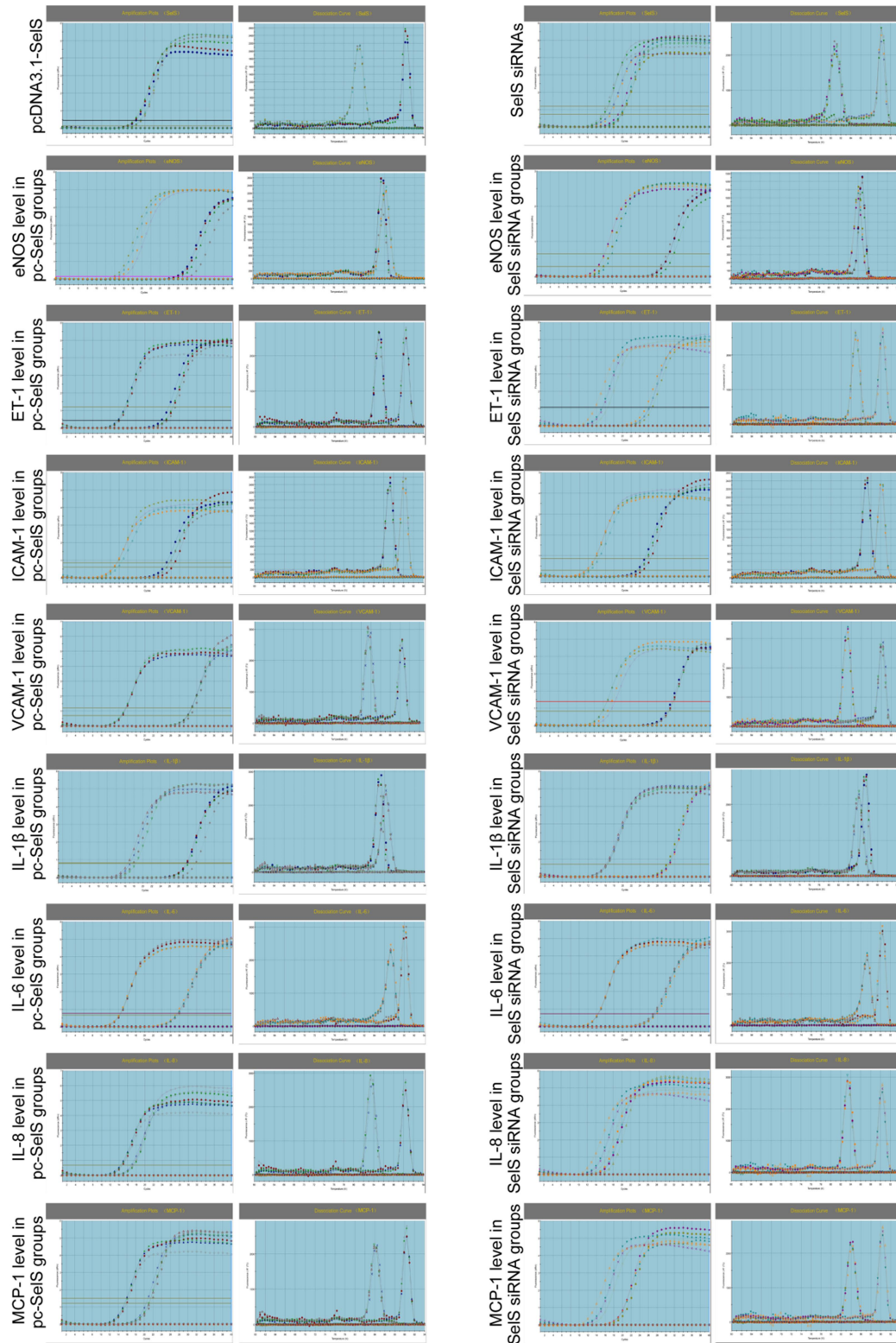
Table S1: the sequences of SelS siRNAs and Negative siRNA were shown.

Designation	Sequence
SelS siRNA 1	sense strand 5'-CCACCUAUGGCUGGUACAUTT-3' antisense strand 5'-AUGUACCAGCCAUAGGUGGTT-3'
SelS siRNA 2	sense strand 5'-CCUUCUCUACGUGGUCUUUTT-3' antisense strand 5'-AAAGACCACGUAGAGAAGGTT-3'
SelS siRNA 3	sense strand 5'-GGAACCUGAUGUUGUUGUUTT-3' antisense strand 5'-AACAACAACAUCAGGUUCCTT-3'
Negative siRNA	sense strand 5'-UUCUCCGAACGUGUCACGUTT-3' antisense strand 5'-ACGUGACACGUUCGGAGAATT-3'

Table S2: the specific primers for RT-qPCR were shown.

Gene	Sequences
Human SelS	5'-GTTGCGTTGAATGATGTCTTCCT-3' 5'-AGAAACAAACCCCATCAACTGT-3'
Human GAPDH	5'-TGACCACAGTCCATGCCATCAC-3' 5'-CGCCTGCTTCACCACCTTCTT-3'
Human eNOS	5'-CTGAAGGCTGGCATCTGGAA-3' 5'-CATGTTACTGTGCGTCCACTCTG-3'
Human ET-1	5'-TCCTCTGCTGGTTCCTGACT-3' 5'-CAGAAACTCACCCCTGTGT-3'
Human ICAM-1	5'-CAAGGTGACCGTGAATGTGC-3' 5'-CGTGGCTTGTGTGTTCGGTT-3'
Human VCAM-1	5'-CCACATCTACGCTGACAATG-3' 5'-GAACACTTGACTGTGATCGG-3'
Human IL-6	5'-TACATCCTCGACGGCATCTCA-3' 5'-GCCATCTTTGGAAGGTTCAAG-3'
Human IL-1 $\beta$	5'-CCTGTCCTGCGTGTTGAAAG-3' 5'-GAGAGGTGCTGATGTACCAG-3'
Human MCP-1	5'-GAAGAATCACCAGCAGCAAG-3' 5'-GAATCCTGAACCCACTTCTG-3'
Human IL-8	5'-AGTTTTGCCAAGGAGTGCTA-3' 5'-AAAACCTTCTCCACAACCCTC-3'

Figure S1: the dissolve and amplification curves were shown in RT-qPCR experiments.



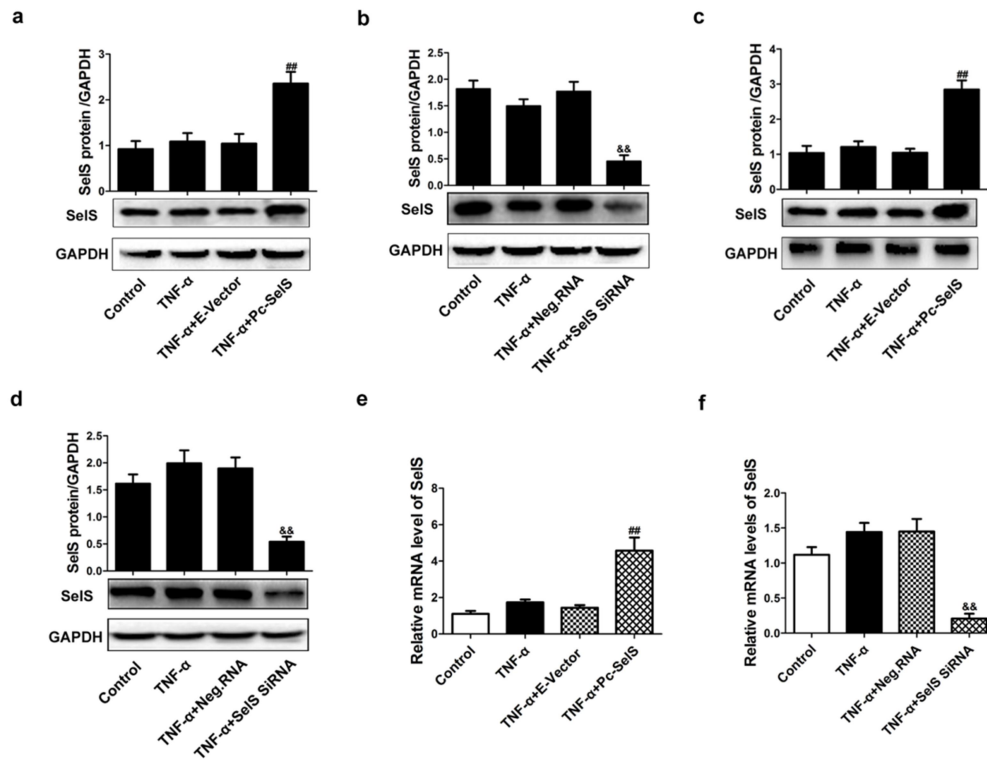


Figure S2: The transfection with pcDNA3.1-SelS recombinant plasmid or SelS siRNA was identified in Figure 3 listed experiments. (a) pcDNA3.1-SelS plasmid transfection and (b) SelS siRNA transfection using in cell viability experiment were determined by western blot. (c) The transfection with pc-SelS plasmid and (d) transfection with SelS siRNA using in NO measurement were tested by western blot. (e) The pc-SelS plasmid transfection or (f) SelS siRNA transfection in eNOS mRNA testing was determined by RT-qPCR.