

Endothelial cell inflammation and barriers are regulated by the Rab26-mediated balance between β_2 -AR and TLR4 in pulmonary microvessel endothelial cells

Huaping Chen^{1,#}, Ming Yuan^{1,#}, Chunji Huang², Zhi Xu¹, Mingchun Li¹, Chun Zhang¹, Zhan Gao¹,
Mingzhou Zhang¹, Jiancheng Xu¹, Hang Qian¹, Jiegen You^{3,*}, Binfeng He¹, Guansong Wang¹,
Mingdong Hu^{1,*}

¹ Institute of Respiratory Diseases, Xinqiao Hospital, Third Military Medical University, Chongqing 400037,
China

² Basic Medical College, Third Military Medical University, Chongqing 400038, China

³ Jiangxi Academy of Medical Sciences, Nanchang City, Jiangxi Province 330006, China

Contributed equally to this work

Correspondence should be addressed: * Mingdong Hu, huhanshandd@aliyun.com; and *Jiegen You, yjg700330@163.com

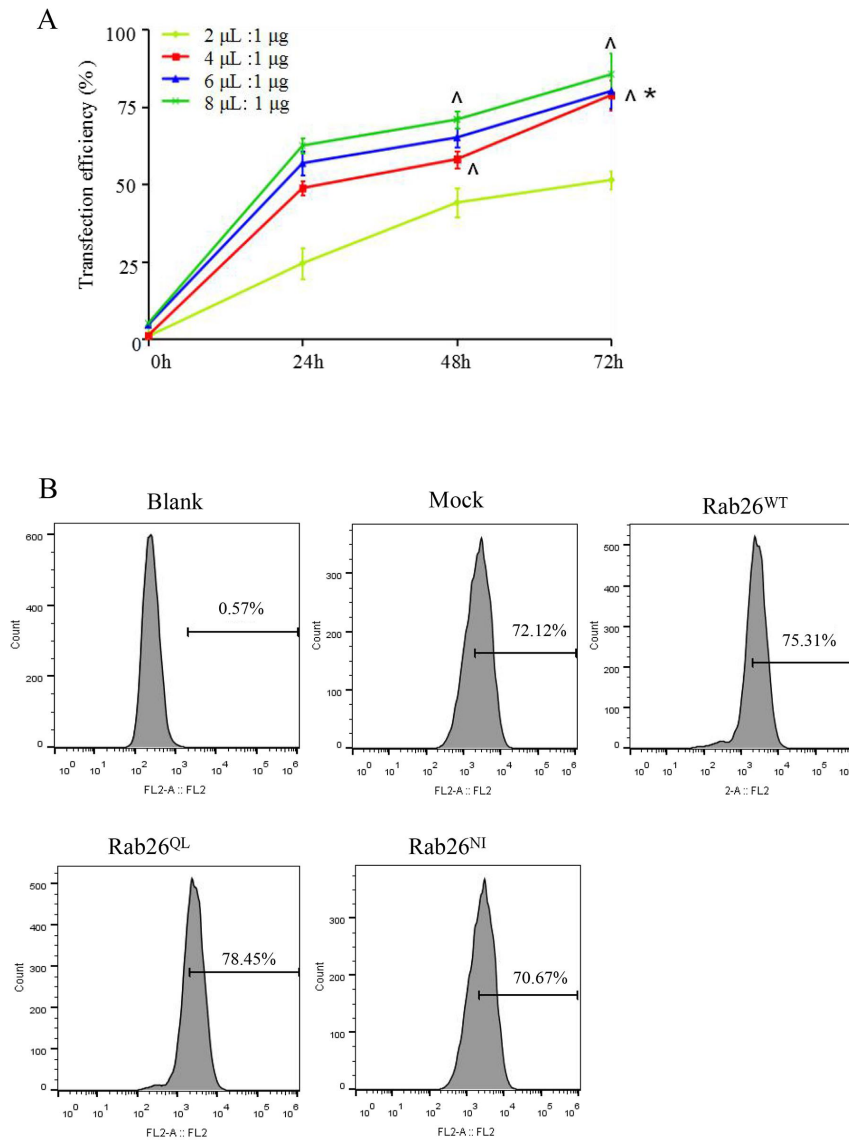


Fig.S2. FACS analysis the transfection efficiency of DsRed-tagged Rab26 plasmid. (A). Time- and- dose dependent cell transfection efficiency of the DsRed-tagged Rab26^{WT} plasmid in HPMECs. HPMECs were incubated with transfection reagent (2μL, 4 μL, 6μL, 8μL) and DsRed-tagged Rab26^{WT} plasmid (1 μg) at various periods of time (0 h, 24 h, 48 h, or 72 h). (B). Transfection efficiency of the DsRed-tagged Rab26 plasmid by FACS. HPMECs were transfected with ViaFectTM transfection reagent (4 μL) and plasmid (1 μg) for 72 h. Blank, DsRed vector (Mock), DsRed-tagged Rab26 wild-type (Rab26^{WT}), DsRed-tagged Rab26Q123L (Rab26^{QL}), DsRed-tagged Rab26N177I (Rab26^{NI}). The data are the means \pm SD (n = 3). ^, p < 0.05 versus the groups incubated for 24 h; *, p < 0.05 versus the 48 h group.

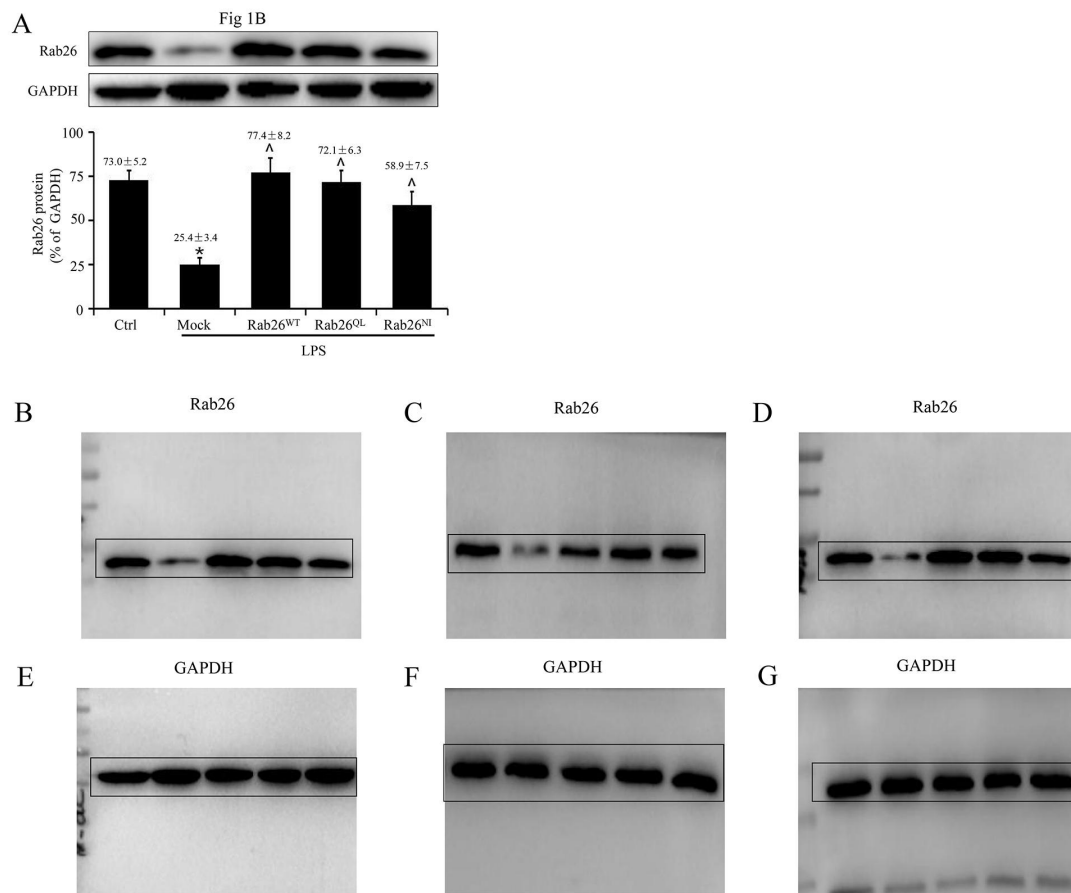


Fig.S3. Original full-size western blots used for Figure 1B. (A) Fig. 1B. (B-D) The WB full membranes of Rab26. The molecular mass (MW) is 28 kDa. (E-G) The WB full membranes of GAPDH. The molecular mass (MW) is 37 kDa. The data are the means ± SD (n = 3). *, p < 0.05 versus the control group; ^, p < 0.05 versus the mock group.

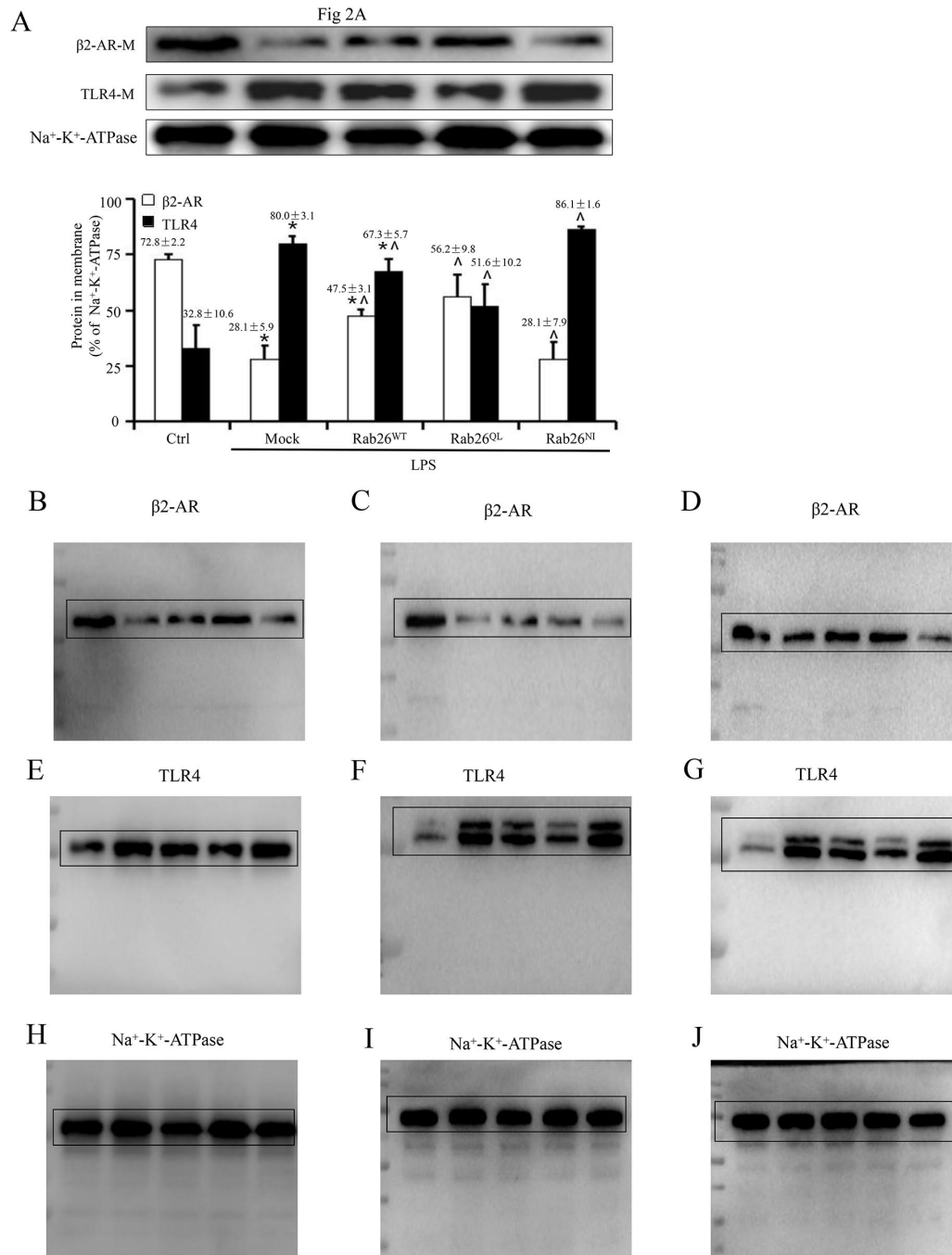


Fig.S4. Original full-size western blots used for Figure 2A. (A) Fig. 2A. (B-D) The full WB membranes of β₂-AR. The molecular mass (MW) is 45 kDa. (E-G) The full WB membranes of TLR4. The molecular mass (MW) is 97 kDa. (H-J) The full WB membranes of Na⁺-K⁺-ATPase. The molecular mass (MW) is 117 kDa. The data are the means ± SD (n = 3). *, p < 0.05 versus the control group; ^, p < 0.05 versus the mock group.

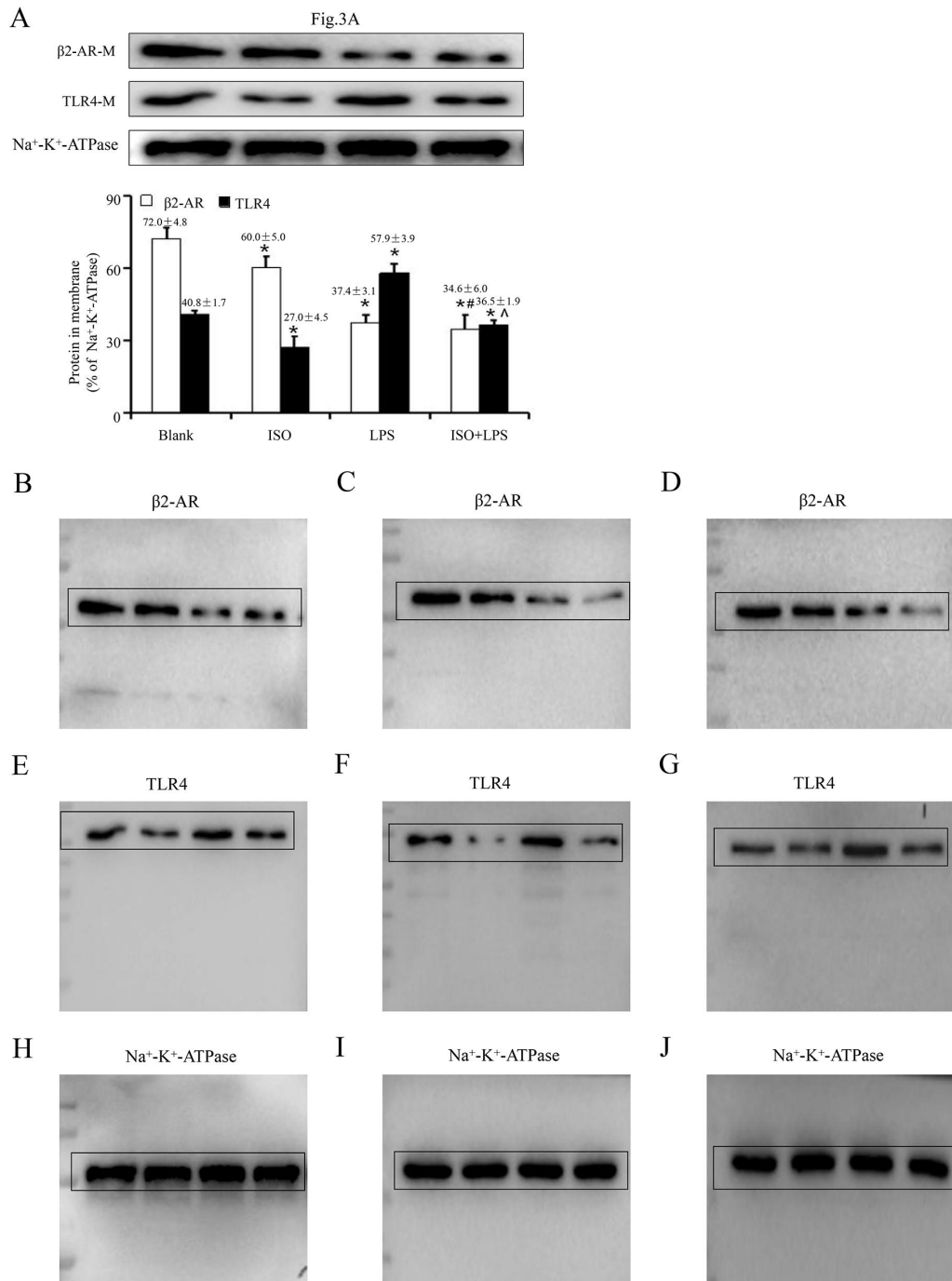


Fig.S5. Original full-size western blots used for Figure 3A. (A) Fig. 3A. (B-D) The full WB membranes of β₂-AR. The molecular mass (MW) is 45 kDa. (E-G) The full WB membranes of TLR4. The molecular mass (MW) is 97 kDa. (H-J) The full WB membranes of Na⁺-K⁺-ATPase. The molecular mass (MW) is 117 kDa. The data are the means ± SD (n = 3). *, p < 0.05 versus the blank group; ^, p < 0.05 versus the LPS group; #, versus the ISO group.

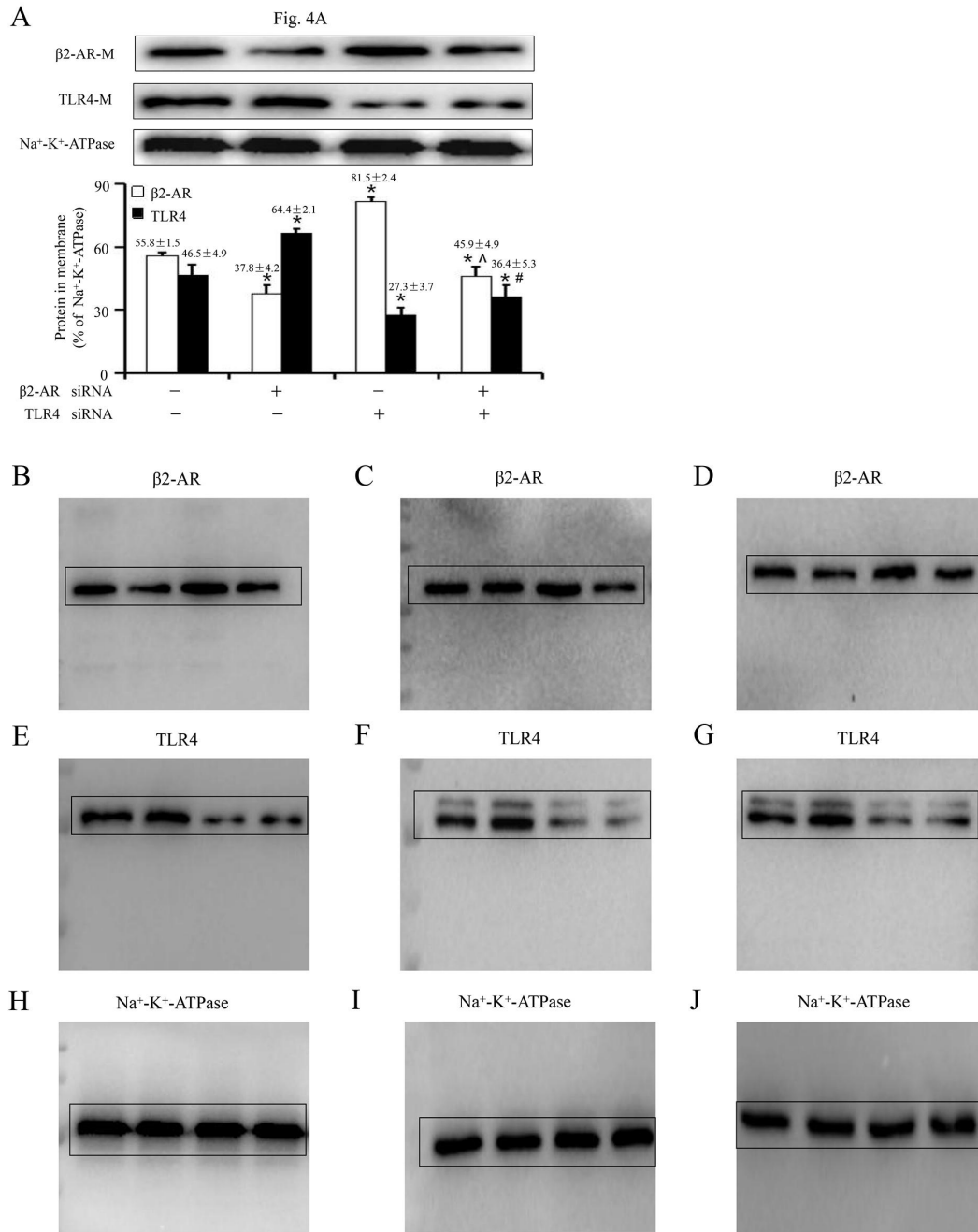


Fig.S6. Original full-size western blots used for Figure 4A. (A) Fig. 4A. (B-D) The full WB membranes of β₂-AR. The molecular mass (MW) is 45 kDa. (E-G) The full WB membranes of TLR4. The molecular mass (MW) is 97 kDa. (H-J) The full WB membranes of Na⁺-K⁺-ATPase. The molecular mass (MW) is 117 kDa. The data are the means ± SD (n = 3). *, p < 0.05 versus the NC; ^, p < 0.05, versus the β₂-AR siRNA group, #, p < 0.05, versus the TLR4 siRNA group.