

SUPPLEMENTAL TABLE AND FIGURES

Supplemental Table 1. Baseline parameters of patients

Data are mean \pm SD, n or median (interquartile range).

Supplemental figure 1. PPAR α and PPR β/δ activation induces the expression of TFPI-1 in human primary macrophages.

Expression of TFPI-1 was measured by Q-PCR in differentiated macrophages treated in the absence or in the presence of GW1516 (100 nM), GW647 (600 nM) or GW1929 (600 nM), for 24h. Results are representative of those obtained from 3 independent macrophage preparations and are expressed relative to the levels in untreated cells set as 1. Each bar is the mean value \pm SD of triplicate determinations. Statistically significant differences between treatments and controls are indicated (* $p < 0.05$; ** $p < 0.01$).

Supplemental figure 2. PPAR γ activation does not modify TFPI-1 activity in human primary macrophages.

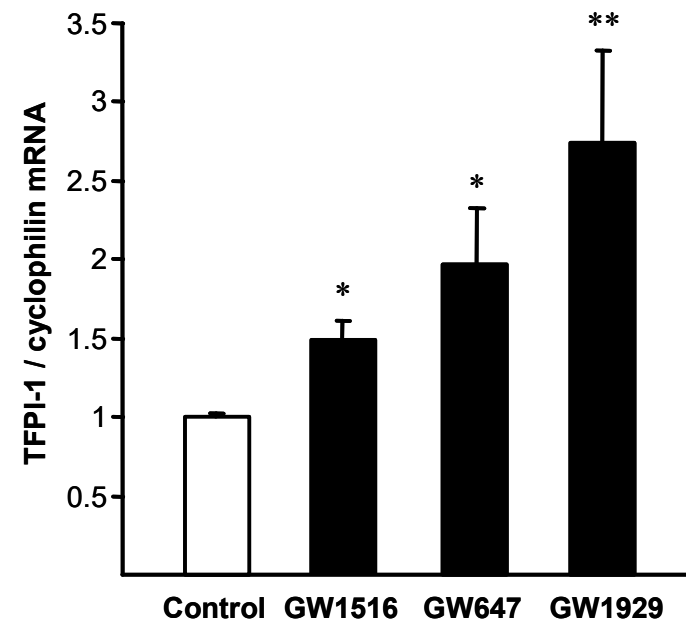
TFPI-1 specific activity was measured in differentiated macrophages treated or not with GW1929 (600 nM) for 24h.

Supplemental figure 3. PPAR γ activation reduces the TF/TFPI-1 ratio.

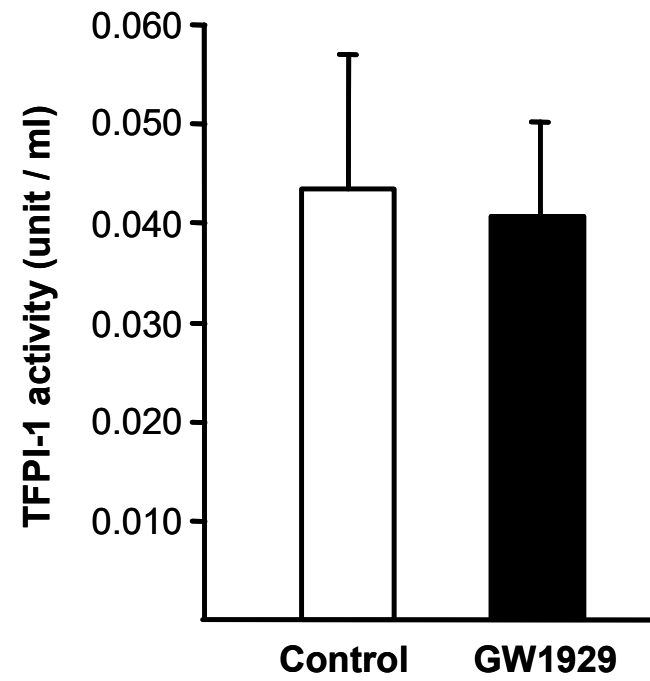
Differentiated macrophages were treated with GW1929 (24h, 600 nM), washed and then incubated in the presence of FVIIa (10 nM) for a further 24h. TF and TFPI-1 mRNA levels were measured by Q-PCR and normalized to those of cyclophilin, and their ratio calculated and expressed as the mean value \pm SD of triplicate determinations. Statistically significant differences are indicated (* $p < 0.05$).

Supplemental Table 1.

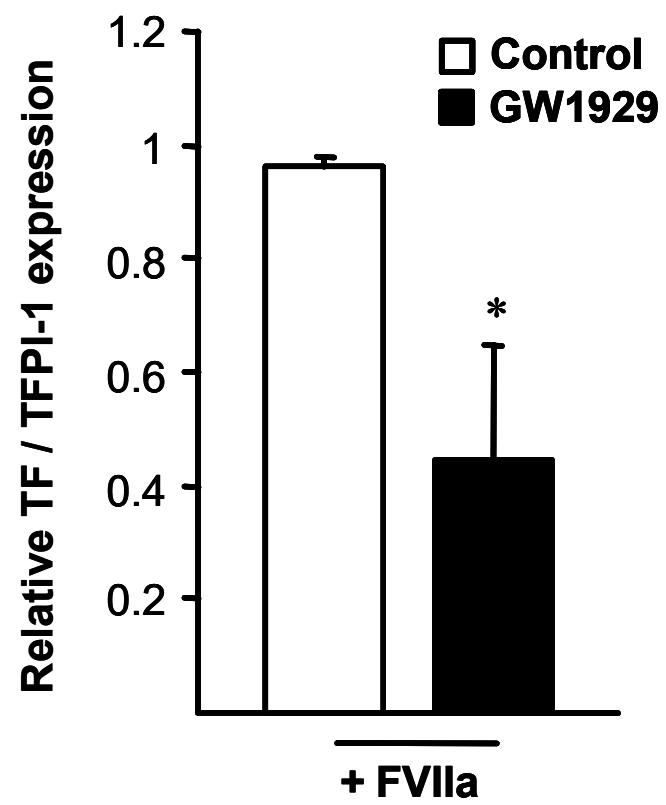
Age	63.1±2.3
Smokers	8
Sexe (male/female)	11/3
BMI	25.9 (23.7;29.4)
Fasting glucose (mmol/L)	5.3 (4.8;5.5)
Fasting insulin (μU/L)	5.6 (4.2;8.4)
Total cholesterol (mmol/L)	4.3 (4.0;4.9)
HDL cholesterol (mmol/L)	1.2 (1;1.4)
Triglycerides (mmol/L)	1.2 (1;2.6)



Supplemental figure 1



Supplemental figure 2



Supplemental figure 3