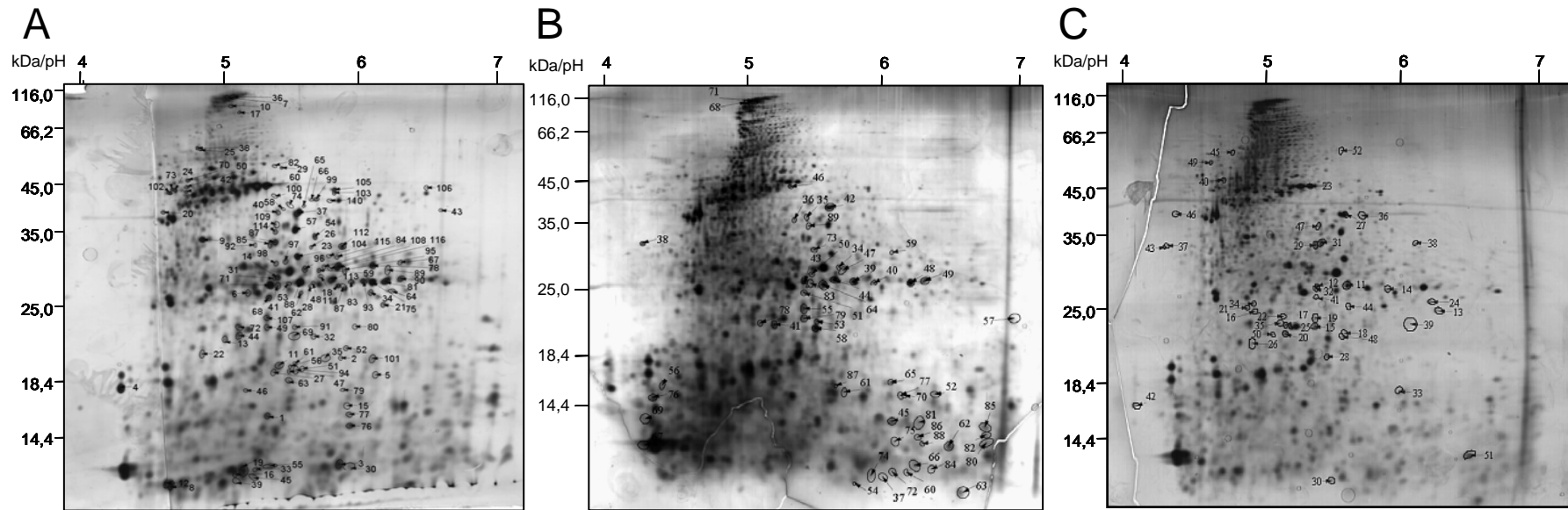


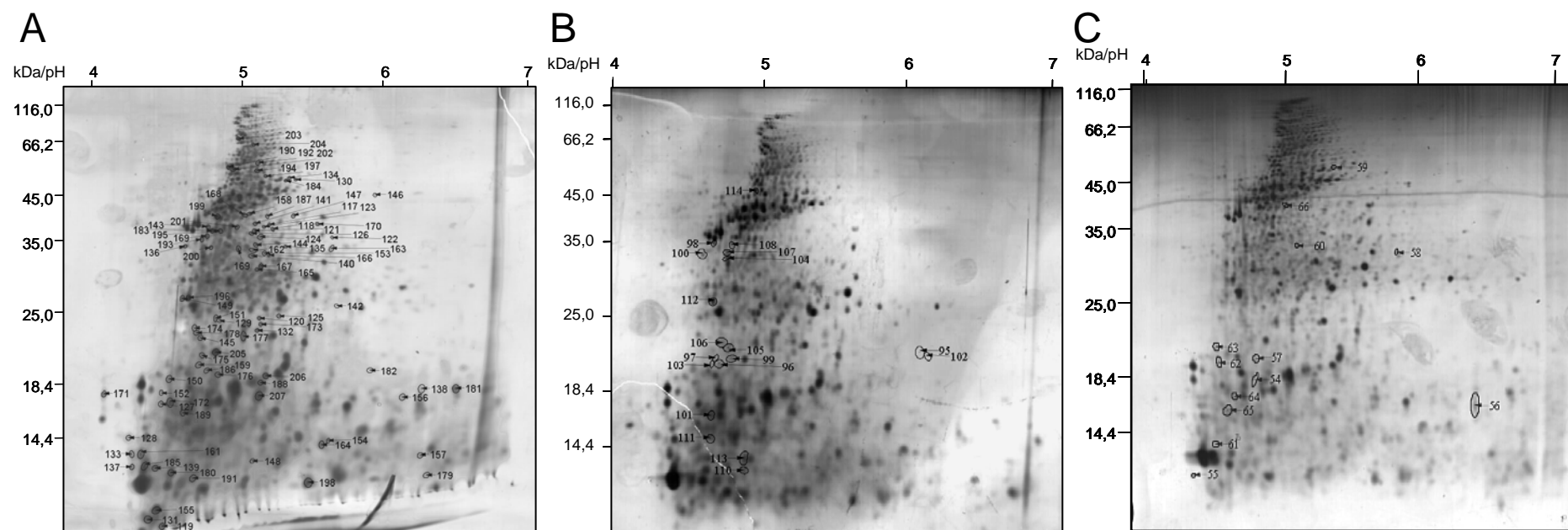
## Supplementary Material: Figure SM1



**Figure SM1**

Comparison of the proteome pattern of eleutheroembryos of the zebrafish exposed to rotenone (A) DNOC (B) and diclofenac (C) with the respective  $EC_{10}$  concentration (rotenone = 0.05  $\mu$ M; DNOC = 2.80  $\mu$ M; Diclofenac = 12,6  $\mu$ M). Only in expression upregulated proteins are depicted. The x-axis shows the pH-range and the y-axis the molecular weight (MW) in kDa. Exposed to rotenone, 116 proteins, to DNOC, 56 proteins and to Diclofenac, 41 proteins are increased in their intensity. Modified proteins are encircled and labelled with numbers. The labelled spots can be found in the supplementary material section.

## Supplementary Material: Figure SM2



**Figure SM2**

Comparison of the proteome pattern of eleutheroembryos of the zebrafish exposed to rotenone (A), DNOC (B) and diclofenac (C) with the respective EC<sub>10</sub> concentration (rotenone = 0.05  $\mu$ M; DNOC = 2.80  $\mu$ M; diclofenac = 12,6  $\mu$ M). Only repressed proteins are depicted. The x-axis shows the pH-range and the y-axis the molecular weight (MW) in kDa. Exposed to rotenone, 91 proteins, to DNOC, 20 proteins and to diclofenac, 14 proteins are decreased in their intensity. Modified proteins are encircled and labelled with numbers. The labelled spots can be found in supplementary material section.