

Supplemental Table 1. Single nucleotide polymorphisms (SNP) in the *SLC6A2* gene (encoding NET protein) and q-values for the correlation between MIBG avidity and each SNP, using additive and dominant genetic models.

Single Nucleotide Polymorphism	Location	Minor Allele Frequency ^a	Additive Model q-value	Dominant Model q-value
rs2242446	5' near gene	0.26	0.26	1
rs36030	Intron 1	0.15	0.45	1
rs17307096	Intron 1	0.37	0.25	1
rs3785143	Intron 1	0.10	0.32	1
rs1532701	Intron 1	0.45	0.25	1
rs734980	Intron 1	0.07	0.32	1
rs187715	Intron 2	0.03	^b	1
rs36026	Intron 2	0.10	0.46	1
rs36024	Intron 3	0.47	0.25	1
rs187714	Intron 3	0.40	0.25	1
rs36023	Intron 3	0.28	0.35	1
rs16955591	Intron 3	0.11	0.46	1
rs3785152	Intron 3	0.11	0.46	1
rs40147	Intron 3	0.31	0.46	1
rs1814270	Intron 3	0.32	0.32	1
rs36016	Intron 4	0.45	0.25	1
rs3785155	Intron 4	0.12	0.25	1
rs1345429	Intron 4	0.49	0.26	1

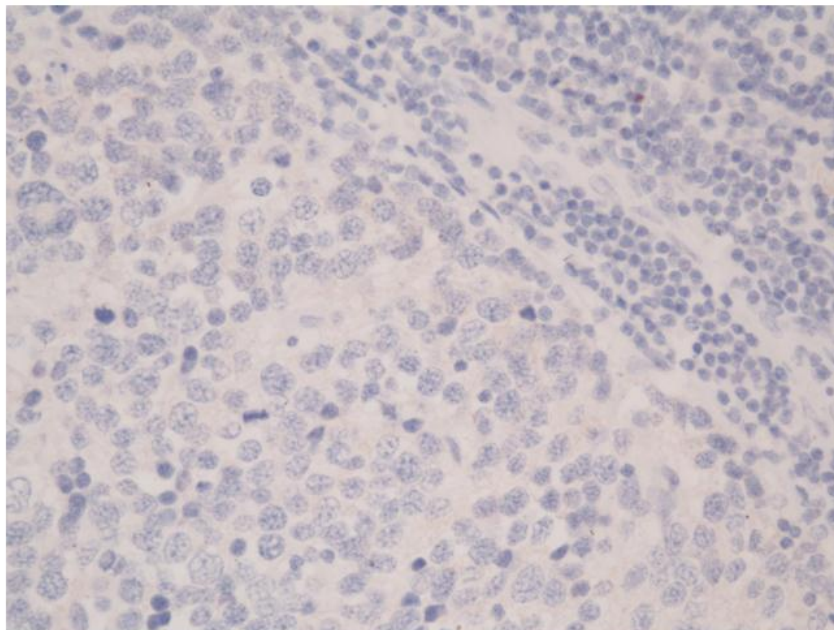
rs11862589	Intron 4	0.48	0.26	1
rs36013	Intron 4	0.09	0.45	1
rs3785157	Intron 7	0.26	0.25	1
rs5568	Intron 7	0.28	0.30	1
rs1566652	Intron 8	0.28	0.25	1
rs5569	Exon 9 ^c	0.27	0.25	1
rs36009	Intron 10	0.09	0.46	1
rs42460	3' Untranslated Region	0.11	0.45	1

^a From NCBI dbSNP database.

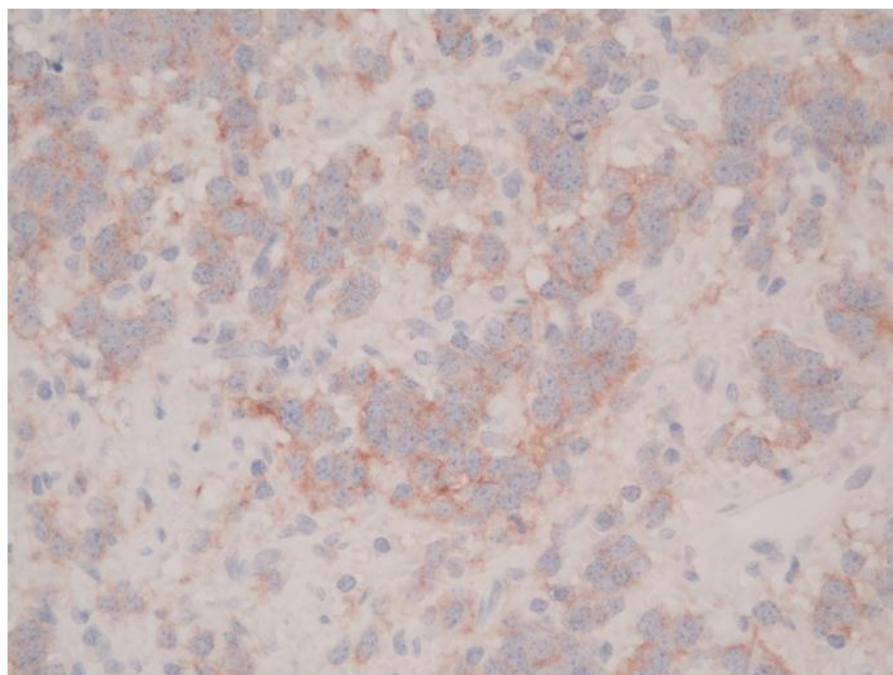
^b Additive model not applicable as no cases with two copies of minor allele.

^c Synonymous SNP.

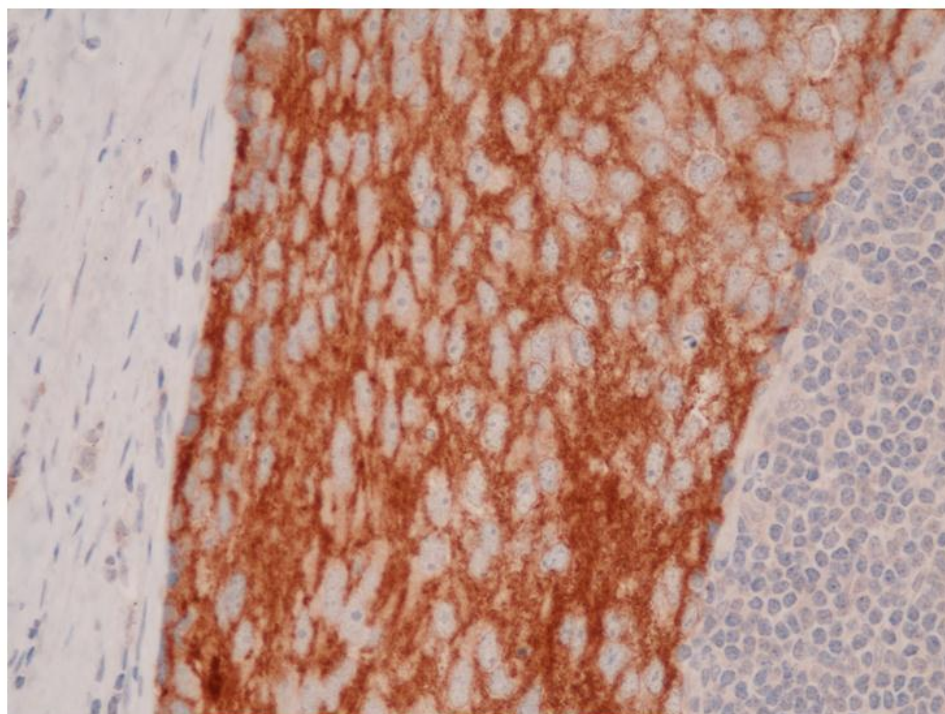
Supplemental Figure 1A



Supplemental Figure 1B



Supplemental Figure 1C



Supplemental Figure 2

