

SUPPLEMENTAL MATERIAL

SUPPLEMENTAL FIGURE LEGENDS

Supplemental Figure 1: Demographics of the 102 intermediate-risk pediatric HL patients included in the TMA. Patients are stratified by age and HL subtype. Total number of patients for each age is summarized (total height of bar). MC = mixed cellularity subtype (gray), NS = nodular sclerosing subtype (black), LP = lymphocyte predominant subtype (white), NOS = HL not otherwise specified (speckled).

Supplemental Figure 2: Immunohistochemistry of NF-κB subunits based on rapidity of response to treatment. Comparison of protein expression intensities in rapid early responders (RER) (top panel) and slow early responders (SER) (bottom panel). Antibodies include Rel-A (far left), Rel-B (mid-left), c-Rel (mid-right), and NIK (far right). Pictures were taken at 400x magnification using an Olympus BX41 microscope. Whole images were adjusted for contrast and brightness.

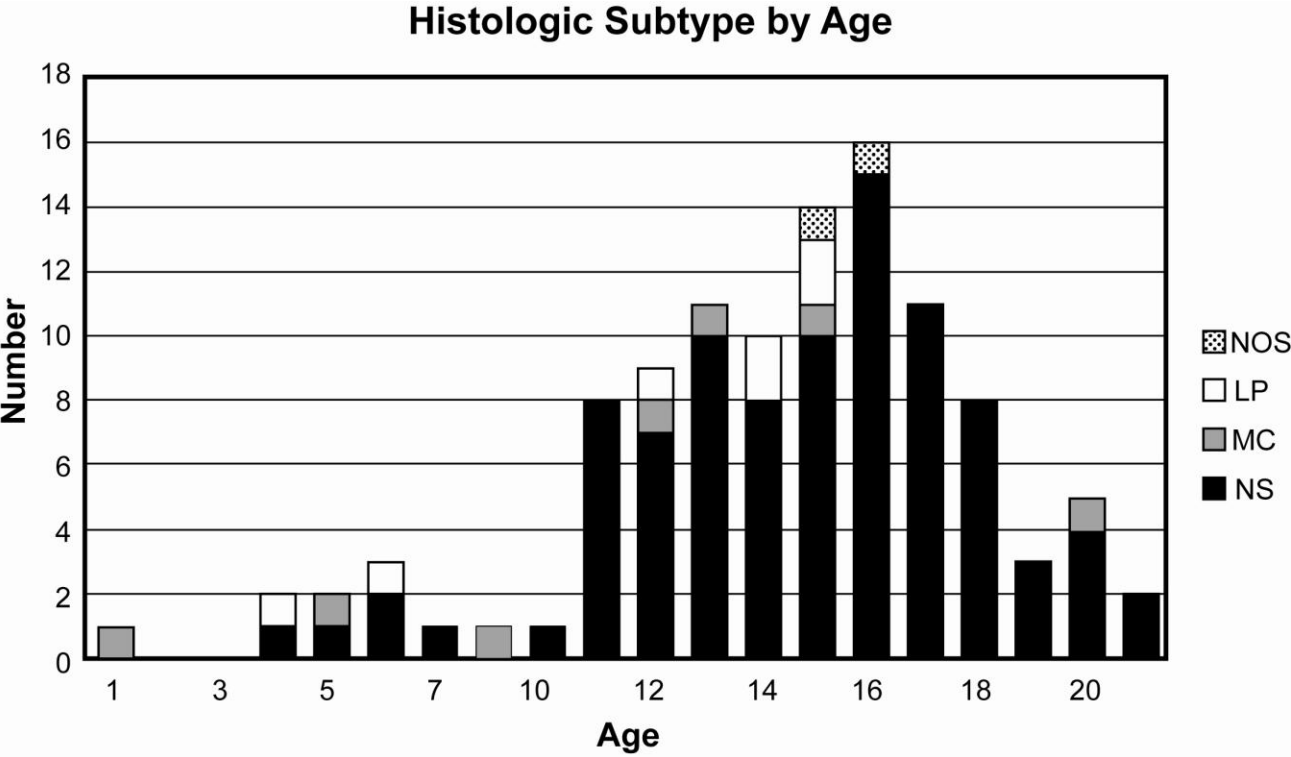
Supplemental Figure 3: Spearman correlation coefficients between NF-κB pathway proteins stratified by EBV status. Nuclear (top panel) and cytoplasmic (bottom panel) NF-κB pathway protein correlations were examined in EBV- patients (left panels) and EBV+ patients (right panels). Top number is the correlation coefficient and the bottom number is the statistical significance (raw p value). Statistically significant correlations after correction for multiple comparisons are noted in bold. Significant results are also designated with asterisks, * $p < 0.05$, ** $p < 0.01$.

Supplemental Figure 4: Spearman correlation coefficients between NF-κB pathway proteins stratified by rapidity of response to treatment. Nuclear (top panel) and cytoplasmic (bottom panel) NF-κB pathway protein correlations were examined in patients with rapid early response to treatment (RER) (left panels) vs. those with a slow early response to treatment (SER) (right panels). * $p < 0.05$, ** $p < 0.01$.

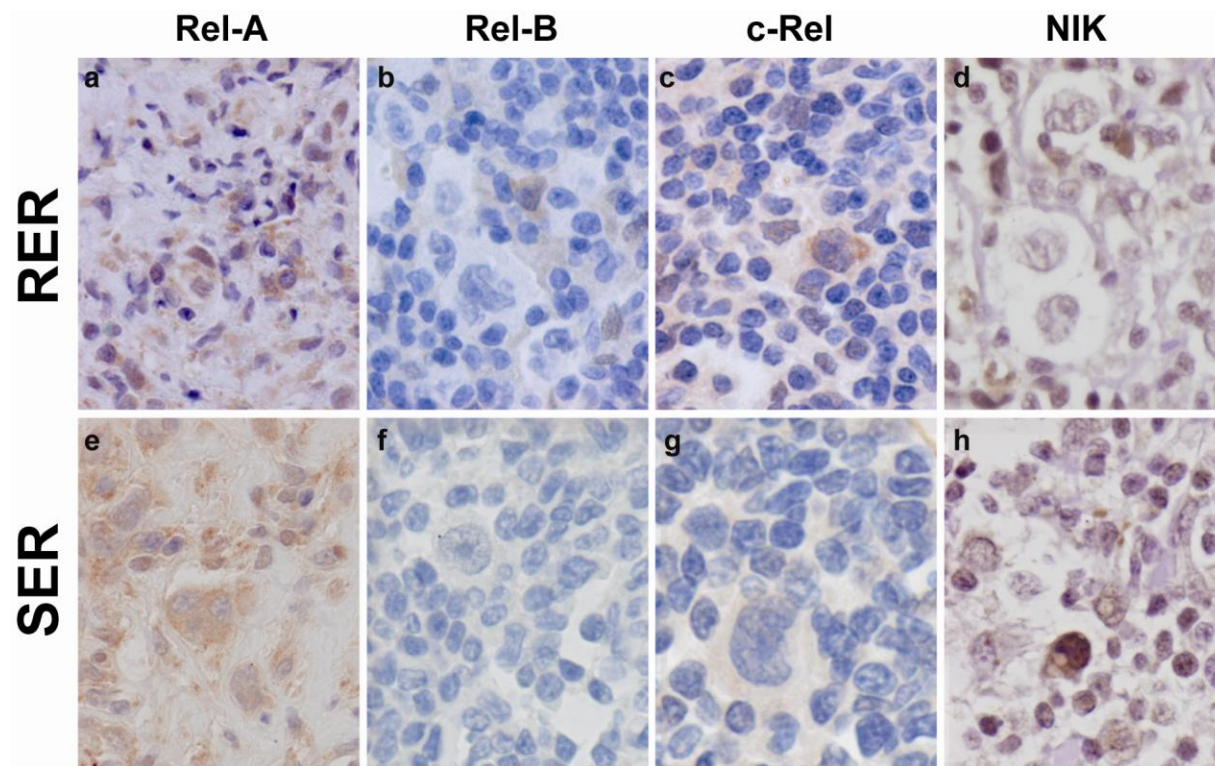
Supplemental Table I: Antibodies used for IHC

Antibody	Clone	Source	Catalogue	Dilution	Reference
CD30	Ber-H2	Dako	MO751	1:15	(40)
EBV-LMP1	CS.1-4	Dako	MO897	1:25	(41)
Rel-A-p65	Poly	AbCam	31481	1:50	(42)
P-Rel-A	Poly	AbCam	30623	1:50	(42)
Rel-B	C19	SantaCruz	SC226	1:50	(43)
c-Rel	Poly	CalBiochem	PC139	1:50	(44)
NF- κ B1	Ser933	Cell Signal- ing	3035	1:200	(39)
P-NF- κ B2	18D10	Cell Signal- ing	3017	1:50	(39)
P-I κ B- α	S32+S36	AbCam	47752	1:50	(45)
P-IKK- α	Poly	GenScript	A00356	1:50	--
IKK- β	Poly	Lifespan	LS-B715	1:25	--
IKK- γ	Poly	Cell Signal- ing	2685	1:10	(39)
NIK	Poly	AbCam	37712	1:20	(46)
A20	Poly	AbCam	AB74037	1:250	--

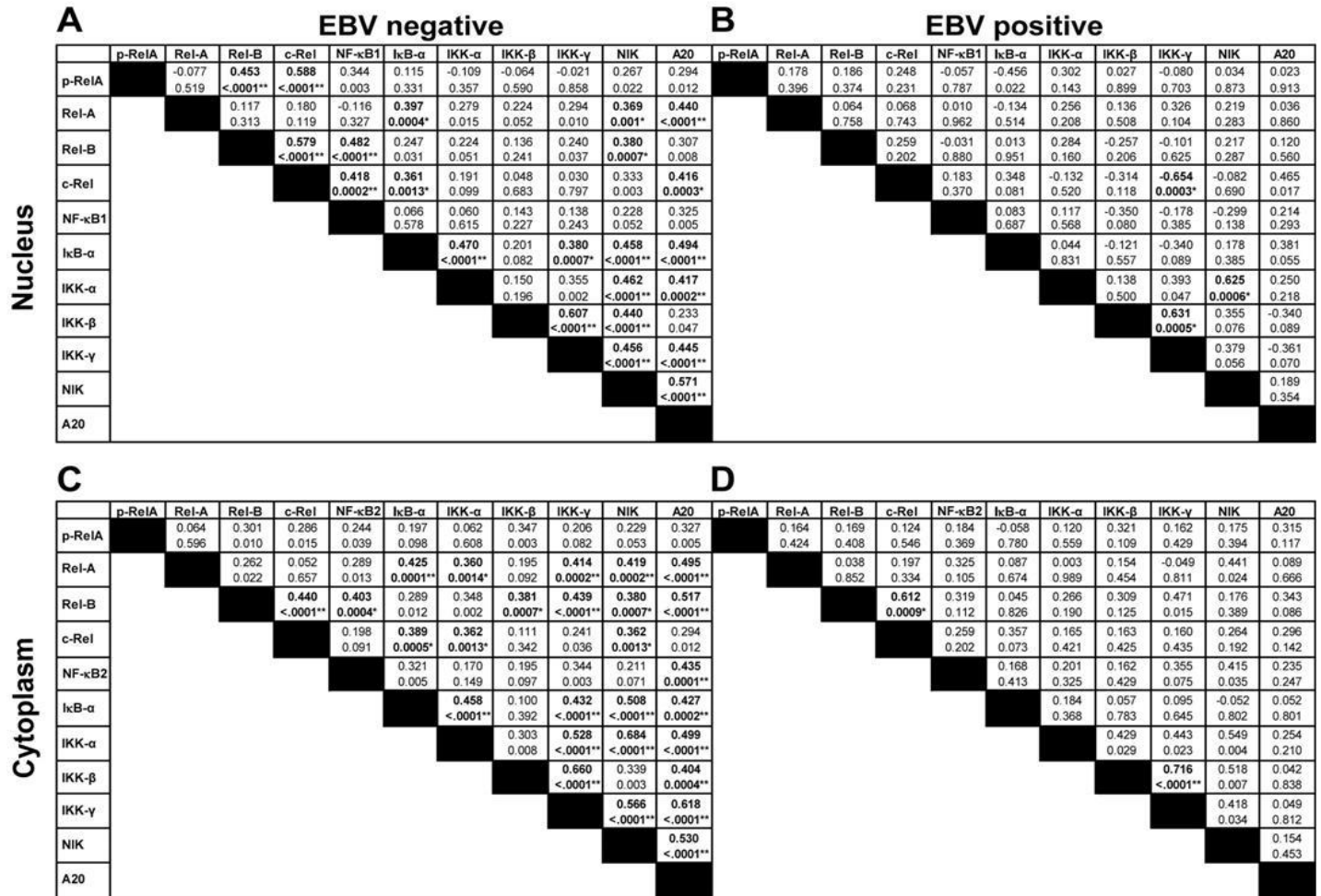
Supplemental Figure 1:



Supplemental Figure 2



Supplemental Figure 3:



Supplemental Figure 4:

