

Fig. 1s. Influence of MWCNTs suspension ( $0.2 \text{ mg ml}^{-1}$ ) volume used on the anodic peak current. Other conditions are as in Fig. 1.

Fig. 2s. Variation of the anodic peak current with accumulation time. Other conditions are as in Fig. 1.

Fig.3s. DPV obtained for the determination of indomethacin in human serum samples;

(1) blank serum extract (2) extract containing  $3.0 \times 10^{-5} \text{ M}$  indomethacin

(3) extract containing  $6.0 \times 10^{-5} \text{ M}$  indomethacin (4) extract containing  $8.0 \times 10^{-5}$

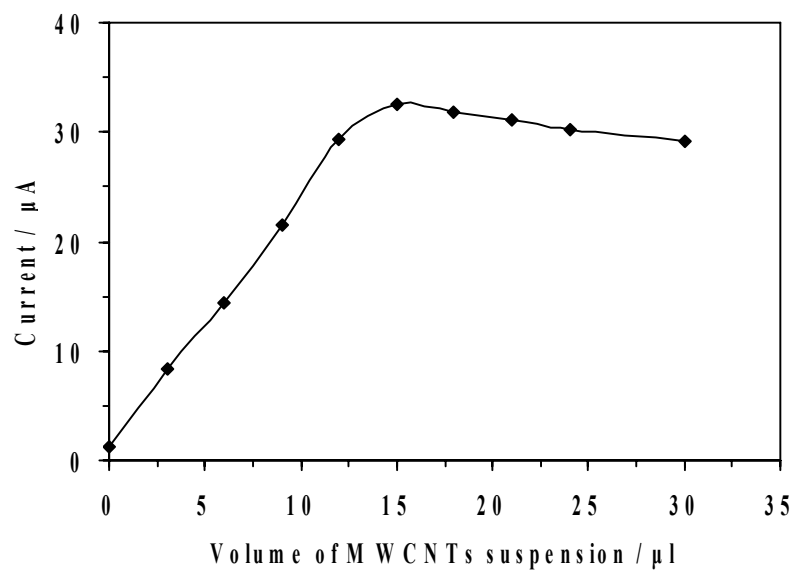


Fig.1s.

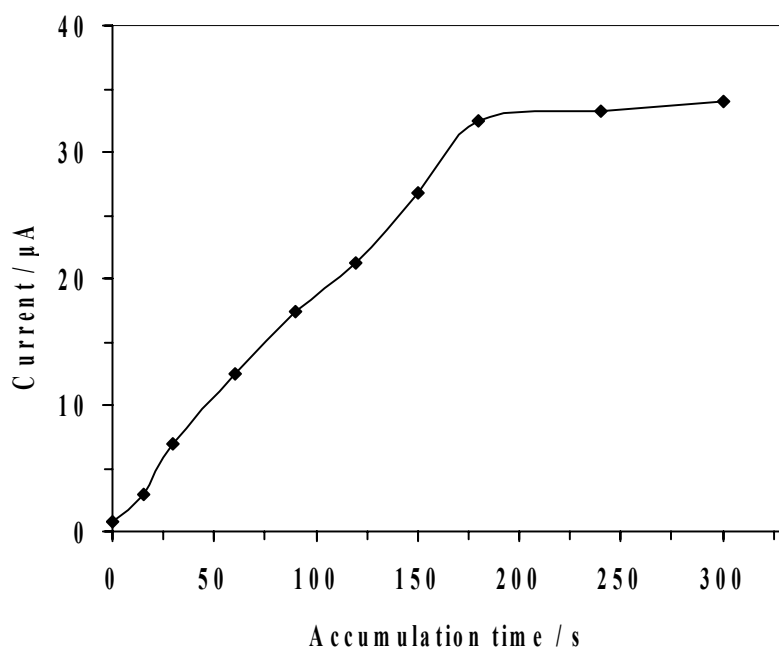


Fig. 2s.

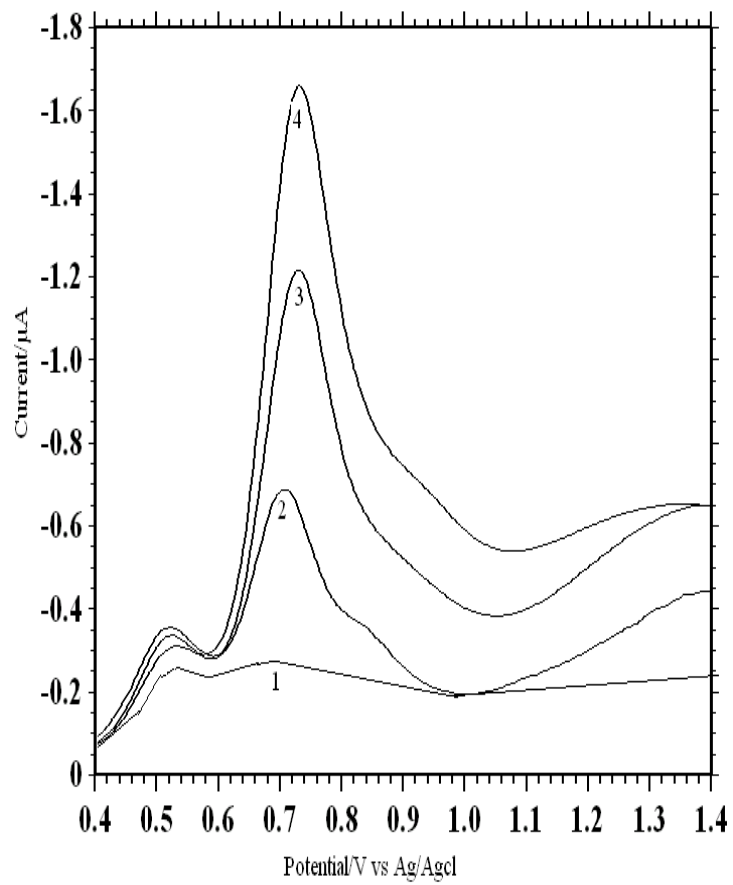


Fig. 3s.