

Retraction

Retracted: Improvement of Acupuncture Based on Smart Medical Care for Post-Stroke Hemiplegic Shoulder Pain and Upper Limb Motor Function

Journal of Healthcare Engineering

Received 20 June 2023; Accepted 20 June 2023; Published 21 June 2023

Copyright © 2023 Journal of Healthcare Engineering. This is an open access article distributed under the Creative Commons Attribution License, which permits unrestricted use, distribution, and reproduction in any medium, provided the original work is properly cited.

This article has been retracted by Hindawi following an investigation undertaken by the publisher [1]. This investigation has uncovered evidence of one or more of the following indicators of systematic manipulation of the publication process:

- (1) Discrepancies in scope
- (2) Discrepancies in the description of the research reported
- (3) Discrepancies between the availability of data and the research described
- (4) Inappropriate citations
- (5) Incoherent, meaningless and/or irrelevant content included in the article
- (6) Peer-review manipulation

The presence of these indicators undermines our confidence in the integrity of the article's content and we cannot, therefore, vouch for its reliability. Please note that this notice is intended solely to alert readers that the content of this article is unreliable. We have not investigated whether authors were aware of or involved in the systematic manipulation of the publication process.

Wiley and Hindawi regrets that the usual quality checks did not identify these issues before publication and have since put additional measures in place to safeguard research integrity.

We wish to credit our own Research Integrity and Research Publishing teams and anonymous and named external researchers and research integrity experts for contributing to this investigation.

The corresponding author, as the representative of all authors, has been given the opportunity to register their agreement or disagreement to this retraction. We have kept a record of any response received.

References

- [1] T. Lu, W. Wang, and Y. Wang, "Improvement of Acupuncture Based on Smart Medical Care for Post-Stroke Hemiplegic Shoulder Pain and Upper Limb Motor Function," *Journal of Healthcare Engineering*, vol. 2021, Article ID 9940645, 9 pages, 2021.

Research Article

Improvement of Acupuncture Based on Smart Medical Care for Post-Stroke Hemiplegic Shoulder Pain and Upper Limb Motor Function

Tingting Lu ¹, Wenxia Wang,¹ and Yongpin Wang²

¹Weifang Hospital of Traditional Chinese Medicine, Weifang 261051, Shandong, China

²K. W. Maternal and Child Health Hospital, Weifang 261041, Shandong, China

Correspondence should be addressed to Tingting Lu; 3080106102@caa.edu.cn

Received 20 March 2021; Revised 27 May 2021; Accepted 1 June 2021; Published 21 June 2021

Academic Editor: Zhihan Lv

Copyright © 2021 Tingting Lu et al. This is an open access article distributed under the Creative Commons Attribution License, which permits unrestricted use, distribution, and reproduction in any medium, provided the original work is properly cited.

As a new stage in the development of medicine and health, smart medicine has attracted attention from all parties in recent years. Especially, under the impetus of the Internet, due to the development of new technologies, smart medical care has made considerable progress, and it has also brought us new challenges. The concept, hypothesis, and design of intelligent medical care are analyzed, and the design objects and design principles of intelligent medical care are highlighted. In Africa, 79 patients with shoulder pain after stroke and hemiplegia in the recession period were disintegrated and divided into observation group (40 people) and control group (39 people). The observation group and the control group used two different treatment methods, acupuncture treatment and traditional western medicine treatment. Finally, the situation of the two groups is checked. From the results, the treatment effect of the control group was not as good as that of the observation group ($P < 0.05$). After treatment, the effects of capillary disease and patients' living conditions in the observation group were better than those in the control group ($P < 0.05$). It is concluded that the therapeutic effect of wisdom acupuncture treatment has a certain effect and can be used in medical treatment.

1. Introduction

The concept of smart healthcare comes from smart cities. Smart cities and smart healthcare have many similarities, and they also have important influences on each other. For example, in the Internet of Things technology, big data has many common features. Since the birth of the Internet, the term “intelligence” has become popular, such as smart roads, smart home appliances, smartphones, and smart computers. The general manifestation of stroke is cerebral hemorrhage or ischemic injury, also called stroke or clinical stroke. This disease has a high clinical disability rate. Studies have shown that many patients experience varying degrees of shoulder pain within 3 months after a stroke, which is mainly caused by decreased motor skills and shoulder pain on the side of hemiplegia. HSP not only increases the suffering of patients, but also greatly reduces the quality of life of patients.

Therefore, how to effectively prevent and treat HSP is of great significance to patients and doctors. HSP not only increases the suffering of patients, but also greatly reduces the quality of life of patients. Therefore, how to effectively prevent and treat HSP is of great significance to patients and doctors.

The plan proposed by Sikorski et al. includes two power producers and one power consumer to conduct transactions through blockchain. Provide all participants with real data generated by the process flowchart model. This project contributes to the proof of concept of the application. However, the practicality of this work is not very high [1]. Sayedalamin et al. discussed the utility, attitudes and trends of medical students at King Abdulaziz University (KAU) in Jeddah, Saudi Arabia, on smartphone-related medical applications (Apps), and their influence on medical applications in training activities the opinion of. The survey was

conducted at the Jeddah Medical College and SA Jeddah KAU Rabigh campus. All participants are medical students in grades 2 to 6. Data is collected through the use of anonymous questionnaires, which involve medical students' knowledge of Medical Apps on smart devices and the purpose of installing Apps. In addition, students were examined using different medical applications to investigate the impact of medical applications on clinical training/practice. However, the data of this study is not representative, and the results obtained are not very accurate [2]. Hemiplegic shoulder pain is the most common pain symptom after stroke. Supracap nerve block is an effective way to treat shoulder pain. The purpose of this preliminary study by Picelli et al. is to evaluate the effects of supra-shoulder nerve block on the pain intensity, spasticity, passive range of shoulder movement, and quality of life in chronic stroke patients with long-term hemiplegic shoulder pain (onset for more than 2 years) with visual analog scale grading ≥ 30 mm were given supra shoulder ras nerve block injection of 10 mL 0.5% bupivacaine hydrochloride and 1 mL 40 mg/mL methylprednisolone. The main result is a visual analog scale evaluated before and after the nerve block at 1 h, 1 week, and 1 month. However, the error of this result is mainly reflected in the inaccurate dosage of reagents [3].

This article mainly introduces that early comprehensive rehabilitation training can significantly improve the symptoms of shoulder pain in patients after stroke and promote the rehabilitation of patients. Judging from the current reports, Chinese medicine, acupuncture, rehabilitation exercise therapy, electrical stimulation, physical therapy, etc. can all relieve the symptoms of shoulder pain to varying degrees. Therefore, in future research, we should have more stringent requirements, and strive to conduct large-sample, multi-center clinical and experimental research, compare patients' conditions in stages, follow-up and observe long-term treatment effects, in order to improve the credibility of treatment. This is for clinical work. Provide more reliable data so that more effective treatment plans can be promoted and applied to clinical practice.

2. Domestic Acupuncture Treatment Methods

Patients in the observation group received acupuncture treatment. The main acupuncture points for acupuncture are selected by the affected side, such as Zusanli, Xiutu, Quchi, Neiguan, Sanyinjiao, and Yongquan, used for acupuncture and sports [4]. The selection of acupuncture points is based on the dialectical meridian. Acupuncture method: after disinfecting the selected acupuncture point, pierce the acupuncture point vertically with a small needle of 50 mm long and 30 cm. Depending on the situation, the methods of lifting, insertion, and twisting can be increased, reduced, or flattened, while the methods of acupuncture can be reduced [5]. When performing acupuncture and moxibustion, pay attention to the intensity of acupuncture. For example, in Zusanli, Quchi, Neiguan, Sanyinjiao, and Yongquan, lift, insert, and rotate the acupuncture points for 30 minutes every 10 minutes to improve the treatment effect.

Acupuncture treatment is performed once a day for 5 days [6]. After 1 treatment cycle, rest for 2 days, and perform 6 consecutive treatments to observe the clinical effect. The control group received conventional treatment with western medicine, including anti-inflammatory drugs that promote blood circulation, improve immunity, and have neuro-protective effects.

Stroke is synonymous with stroke in modern medicine, and middle-aged and elderly people are more likely to suffer from it. High morbidity, high mortality, and high disability rate are his characteristics. It poses a serious threat to human health. A common complication in cerebrovascular disease is quadriplegia after stroke. Due to the atrophy of the shoulder muscles and poor blood supply to the surrounding tendons, the clinical manifestations are shoulder pain and mobility disorders on the hemiplegic side, which seriously affects the recovery of upper limb function [7, 8].

2.1. Efficacy Evaluation. After treatment, the optical similarity score (VAS) and neurodegeneration score (NIH SS) are used to evaluate the clinical effects of shoulder joint pain, which are divided into cured, useful, and useless [9]. It will be reduced by 91%–100%, shoulder pain will be reduced, and the affected upper limbs will move normally. Useful: compared with pretreatment, nerves have been degenerated and reduced by 46% to 90%, shoulder pain has been relieved, but it has not recovered as normal. Nerve degeneration, if it drops below 46%, shoulder pain has not been alleviated yet [10].

$$Q(nh \leq s(m)) \cdot t. \quad (1)$$

The smaller the $S(m)$, the better the treatment effect and the better the patient's recovery.

2.2. Inclusion and Exclusion Criteria

- (1) Most of the patients suffer from acute attacks, which are inferred to be cerebrovascular accidents after CT diagnosis.
- (2) After admission, all patients suffered from ipsilateral shoulder pain, and the condition developed for 1 to 4 months.
- (3) Except for patients with a history of shoulder injuries and arthritis.
- (4) Patients suffering from severe heart, liver, kidney failure, and mental illness are not counted [11, 12]. The entire flow of the S H A-256 algorithm includes 6 functional logics and 1 set of constants and uses a 512b message block:

$$W_t = M_t^{(i)} \quad (0 \leq t \leq 1). \quad (2)$$

Initialize 8 working variables $A, B, C, D, E, F, G,$ and H with the middle of the value of each round of Hash. The working variables are given by H_1-H_7 [13]. The elliptic curve signature equation is improved, and then another equation is obtained: the signature equation (SE):

$$sh = w + ry. \quad (3)$$

Verification equation (V E):

$$rk = mg + rx. \quad (4)$$

Among them, m can be either a file to be signed, a plaintext, an encrypted file, or the result of the Hash function [14].

2.3. Observation Indicators

- (1) The NIHSS scores before and after treatment are calculated according to the functional evaluation standards established by the Fourth Cerebrovascular Society [15]
- (2) Calculate the ADL score before and after treatment according to the Barthel index evaluation method [16]
- (3) Observe the clinical efficacy of the two groups after treatment

2.4. Statistical Processing. From the data processed by SPSS 19.0 statistical software, the general form of data is expressed as mean + standard deviation ($\pm s$). The clinical efficacy of the two groups was tested by $c2$, and the NIHSS score and ADL score were compared with the t -test. The results are all expressed as $P < 0.05$, and the difference is statistically significant [17, 18]. Satisfy $f(0) = a_0 = s$, and then calculate each secret share:

$$S_j = f(x_j) \pmod{q}. \quad (5)$$

Then, send it to the participants, where $j = (1, 2, 3, \dots, n)$ [19, 20]. And, open the formula of the coefficient of function/ $z = ga^* \pmod{q}$, where $i = (0, 1, 2, \dots, i-1)$ [21].

2.5. Algorithm Flow. This article recommends using machine learning to use a decision tree algorithm to determine the direction of lens movement and the state of the next step, and then use the climbing algorithm to further determine the maximum value. 1.1 Algorithm description: as shown in Figure 1, the lens is in any position. Therefore, when searching for the peak, the algorithm must determine whether the lens is moving in the near focus direction or in the long focus direction. In this paper, the decision tree T is used to determine the direction of lens movement. The decision T tree only needs to determine three focus values. The focus value is measured from three consecutive lens positions while moving the lens to the far focus in double-precision steps. The camera starts to look at the peak in the direction determined by the dead decision tree. In each step, block (i) is used for recording; it represents the number of steps in the search and represents the corresponding focus value. Several (0, f_0) indicate the starting position of the lens. A single page of the data set is used to calculate the second three-leaf decision tree in the autofocus workflow of

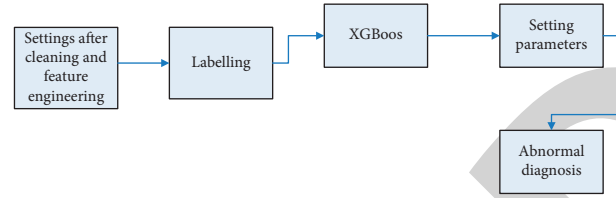


FIGURE 1: Modeling flowchart.

Figure 1. The three labels are “next,” “previous,” and “success,” and each label represents a situation.

2.6. Detailed Algorithm Flow. When creating a decision tree, you must first collect training data, then use the training data to create a series of attribute values, and finally create two decision trees.

2.6.1. Data Collection and Feature Value Extraction. In the machine learning algorithm, the first key factor for success is the data of the reference image. In the process of data collection, the reference images are different, and they were taken in 32 different places, such as beautiful scenery, close-up shots of people, interior, still images, etc. In this article, a CCD camera will be used for shooting, and the images taken are 120 different lens directions, which are used in each venue. Through the second algorithm, we can calculate the focus value of the image. Then an important place is the use of attribute data values. The data must be useful and can effectively distinguish the types of datasets. Two sets of eigenvalues are to be obtained later, and A_s represents the first set of eigenvalues. The decision tree Q is determined by the feature value (that is, it is determined whether the lens is close to the focus or long focus motion). This feature set is a Boolean quantity, which mainly includes three focus values, which are compared with different sensitivities. The second set of attribute values is represented by TB , which is used to identify the TB decision tree (changes between different crisis states). These attributes are represented by a series of individual contributions, including Anzahl der Witze, the last two focus and the negligence of the previous mission. Describe the algorithmic processing of the focus function, where the focus only focuses on the focus. Another problem lies in the characteristic Merkmale Darin feature, in which various “cameras” and “targets” under the target “object position” are added, and these “cameras” and “targets” are also displayed on the “date.” If the focus of “focusing” on the camera lens is important, then the focus between Witzen and Witzen is very clear. Tatsache creates another problem in which the focus will be on the input measurement, and the detailed information and error solutions of the scene will be deleted. However, in order to ensure that the previously specified number of objects is classified as $[0, 1]$ in the Hinsicht field, the subdivision must have a focus on work. Beespielsweise represents the function of the function F , which is to set the frame between two vertices (z, x) and (y, x). Feature meaning:

$$Q(x, Z_x), (y, Z_y) = \frac{(Z_y - Z_x)}{y - x}. \quad (6)$$

2.6.2. Generate Decision Tree. After collecting the data, this indicates that machine learning training data has been generated. As shown in Figure 1, the data in each image corresponds to a set of attributes and label values representing the data, and then they are used to create an r decision tree and an $r3$ decision tree. Create feature values based on algorithms. The shape of the first q decision tree is generated by our rules: when the largest number corresponds to the focus search process, the left side is recorded as “near focus,” and the right side is recorded as “far focus.” Then the process of creating the $r3$ decision tree is as follows: if two or more large values are passed in the search process, the situation is “success”; if no large values are encountered in the whole process, the state is the above two. In this case, the rest is “continue.”

2.6.3. Device Data Query Interface. The device data query interface is the last of all optical interfaces, and it is also the outlet of the entire optical interface, which is the connection point with the equipment hardware and software. In the initial interface, if the user selects a suitable operation, he can enter the user interface. Through this interface, the user can display a diagram of the entire process, understand the rules and basic hardware parameters more clearly, and request device-related device data. In the planning of the initial interface, it is divided into two parts: one is the initialization of the software, and the other is the database connection and dial-up.

We can use Python to design programs; now we build machine learning hardware equipment, and then predict the algorithm model. Estimating the data processed by the hardware equipment is mainly the computing basic usage data of the electrical information of the equipment. The first step is to make a preliminary diagnosis of the operation of the hardware equipment and make timely changes if there is a problem with the equipment operation. We can perform step-by-step processing on the samples based on the analyzed data. There are two cases: an error has occurred and an error has not occurred. Mark 1 and 0, respectively, and use the data after stepping on as the basic data and put it into the GX algorithm. In this way, the device will carry out a planned implementation and obtain the data which can summarize the difference between abnormal and non-anomalous, and the similarities between them, etc. We can give it an initial value and let it freely adopt the corresponding value in different places. In some places, you can also give a value first, and then modify it according to the situation. According to the abnormality of the counting hardware, reset the initial number of the GX association to improve the accuracy of the hardware facility. The initial number of the GX association is shown below, listing the values that are needed for modeling. The basis of each transformation must be a tree-based model. This parameter

defines the loss function that needs to be minimized. This parameter refers to the measurement method for valid data, and the area under the curve is selected. This value is related to the uniform condition and L2. And this parameter can be used to control a part of GX, and finally has a great impact on reducing frequent and excessive use. By reducing the repetition rate of each link, the durability of the model can be improved.

2.6.4. Uncertainty Criteria. The method of using probability to express uncertainty is based on a probability-based heuristic method based on the posterior probability distribution of the sample, so the calculation speed is also very fast. A sample with a 50% reciprocal probability can be obtained to distinguish the two devices. Manually marking and adding to the training set can greatly improve the accuracy of the classifier. But this rule only considers the repetition rate of the device, and ignores other factors. For this category of problems, the lowest confidence method is the most commonly used. This method with uncertainty is expressed as

$$Y_{lg}^* = \arg \max (3 + q_1 (\hat{x} + z)). \quad (7)$$

Among them, $\arg \max()$ represents the reason why the sample x has the highest extraction probability in the category y . The probability that a sample belongs to a certain category is called confidence. This method first calculates the confidence level of each sample in the unlabeled samples and then selects the samples with lower confidence levels for manual labeling. The entropy-based uncertainty representation method uses sample information entropy as the criterion for estimating uncertainty; that is, the higher the sample information entropy, the greater the uncertainty, and the more uncertain the recognition of the current classifier's class samples. It belongs to the definition of information entropy as follows:

$$Z(x) = - \sum q(x_i|x) \log k(u). \quad (8)$$

Among them, $k(u)$ represents the probability that its label belongs to i y in the case of a given example x .

3. Implementation of the Experiment

Medical service is an important issue related to human survival and well-being. Smart medical services are widely used in medicine and healthcare. They serve a variety of subjects, such as patients, doctors, patients' families, nurses, and society. In order to conduct an in-depth study of this field, this case analysis will design objects according to the situation from objects such as physics, behavior, and systems. The physical dimension emphasizes the logical configuration of object attributes. The behavior object is related to the logical organization behavior, and the system object corresponds to the entire service process. These three are different from each other. However, in actual case analysis, these three dimensions are not isolated and relative [22, 23], but are interdependent and related. The purpose of this

classification is to distinguish intelligent medical design objects in order to facilitate the summary of design rules [24]. Figure 1 shows the emerging smart medical case.

3.1. Physical Objects. The physical object is the basis of decision-making, emphasizing the logical formation of object attributes. From this perspective, design pays more attention to the product. Next, we will introduce the “Sugar Doctor” smart blood glucose meter specially designed for diabetes. The characteristic of the blood glucose meter is that it is combined with the current popular smart materials and looks like a smartphone. The blood glucose meter can be connected to the Internet to automatically record the measurement results, and WeChat can query the measurement results. The intelligent blood glucose meter uses Internet information technology to provide patients with blood glucose monitoring functions. A similar example is SmartPatch developed by Frogdesign [25]. Cardiovascular disease is the leading cause of death in the world. Approximately 1,750 people suffer from related diseases every year. Frog Design is working with Flextronics, Politecnico di Milano, GFMNet and the European Union to develop an electronic monitoring system. This device is specially used for remote monitoring of patients with heart disease. It looks like a large ~991], which fits the patient’s chest very well and does not pierce the skin. Instead, use EKG data from mobile sensors, blood pressure and oxygen levels, and other data, and send them to the smartphone via Bluetooth. Then, the mobile device receives and analyzes the data. Then, dispatch medical staff [26]. The design idea of the product is based on the physical object, and the design object is the function of the medical device. It focuses on how to make the blood glucose meter more functional and improve the usability of the product. The results are shown in Table 1.

3.2. Behavior Object. The subject of behavior is the value of rational organizational behavior as the basis for decision-making. The focus is on the process of human behavior as a design object. For example, the online consultations of Dr. Chunyu and Ping An Good Doctor have provided patients with new ways to see a doctor. Based on user behavior, the design is based on behavior objects [27]. Analyze behavior objects, use intelligent medical technology, overcome natural obstacles of traditional methods, and effectively organize stakeholders in the medical system. Typical representatives are Dr. Chun Yu and others. Dingxian-gyuan.com is a professional life science website. It provides many products for medical professionals, such as integrating industry resources and results, providing services such as bibliographic search, case sharing, and information transmission for healthcare professionals and medical researchers [28]. Take the case of Dr. Chunyu. Products include query information, information release, appointment, management, triage, hospital management and patient payment and incremental control, medical services, follow-up visits, inspection information management, and hospital products such as patient information management. These products can accurately analyze and control large-scale medical data,

and execute smart medical and healthcare services that combine medical services and information technology. The details are shown in Figure 2.

3.3. System Objects. In 2009, after IBM proposed the concept of “smart medical care,” it quickly obtained the global object of the world’s system, which is related to the design of the entire link, including the content of the system, organization, environment, economics, etc. The term “system” may not fully express the meaning of the entire link of the actors. It expands into a larger space-time space. The system not only involves the “general and overall situation,” but also involves the design according to different regions and different situations, for example, the combination of the Internet and offline, the seamless connection between the main service process and the branch service process, the win-win situation between service providers and service recipients [29], and the combination of software and hardware (emotional and material). Materials involve physical elements such as space, facilities, etc., global assessment of different service levels, multiple endpoints, methods of providing multi-channel services, such as mobile points, websites, customers, etc. The concept of system objects includes not only the inspection of various stakeholders and all contact points, but also the specific size and design in some cases. Take CVSHealth as an example. CVSHealth is a very successful pharmaceutical retail company. In the United States, CVS currently has retail pharmacies, inpatient clinics, licensed pharmacists, licensed nurses, and nurses. It contains four modules: American chain pharmacies, one-minute fast-paced clinics, and world-class drug welfare management services and professional drug management services. Its innovative services include remote diagnosis and treatment services, replacing some personal diagnosis and treatment services; electronic medical records improve the efficiency of doctor-patient management [30]. In addition, CVS also released some smart hardware products, such as the Kinsa smart children’s thermometer. Parents can use this product to monitor the collective health of school children and check whether the temperature of all children is normal. CVSCaremark smart drug management can help members find health and health management. CVSHealth’s success lies in creating a system-level design that enables users to provide services throughout the health process. This is a very popular “green” concept.

4. Data Analysis

All patients were 50 to 80 years old; the course of disease was 7 to 10 days; Brunnstrom’s exercise stage was stage I–III. The modified Ashworth muscle spasm grade is within grade I, and there is no shoulder displacement during insertion. With the informed consent of the patients or their family members and with the consent of the ethics committee, they were divided into 18 groups using a random number table method, namely, group A and group B. The two groups of patients had basically no significant differences in age,

TABLE 1: Performance comparison of different blood glucose meters.

Sample selection algorithm	Number of training sets	Classification accuracy (%)	Result analysis
BVSB	30	56.41	The 30 selected examples are uneven in each category There are only 2 examples of the third type in 60 training sets
	60	44.94	
Blance-BvsB	30	75.21	Ensure that the samples of each category in the training set are balanced The balance between classes in the sample selection algorithm is very important
	60	90.80	



FIGURE 2: Smart acupuncture (the picture comes from Baidu).

TABLE 2: Comparison of general conditions of patients in groups A and B.

Group	<i>n</i>	Male	Female	Age	Case	Ischemic	Hemorrhagic	Hybrid
A	18	10	8	58.72 ± 3.14	7.71 ± 0.52	10	8	0
B	18	9	9	57.81 ± 2.12	7.82 ± 0.61	10	7	1
T		0.111		0.639		1.067		
P		0.738		0.095		0.587		

gender, stroke type, and disease progression ($P > 0.05$), and they were comparable, as shown in Table 2.

From the comparison in Figure 3, the Brunnstrom movements of the hands and upper limbs of the two patient groups before treatment were not significantly different before treatment ($P > 0.05$). After treatment, Brunnstrom motor skills of group A patients and Brunnstrom motor skills of group B and upper limbs were significantly improved ($P < 0.05$), and Brunnstrom's hand and upper limb motor skills were significantly improved. The improvement of group B patients was significantly better than that of group A ($P < 0.05$).

Refer to Figure 4. This is the relevant template in the "Stroke Management Guidelines" formulated by the Neuroprocessing Team and Cerebrovascular Team of the Department of Neurology of the Chinese Medical Association. The patient was diagnosed with a serious disease.

After treatment, it can be seen from Table 3 that the total effective clinical treatment rate of the observation group is 95.00%, which was greater than 71.79% of the control group. Therefore, the overall effective rate of clinical treatment in the observation group was significantly higher than that in the control group ($\chi^2 = 7.73, P < 0.05$).

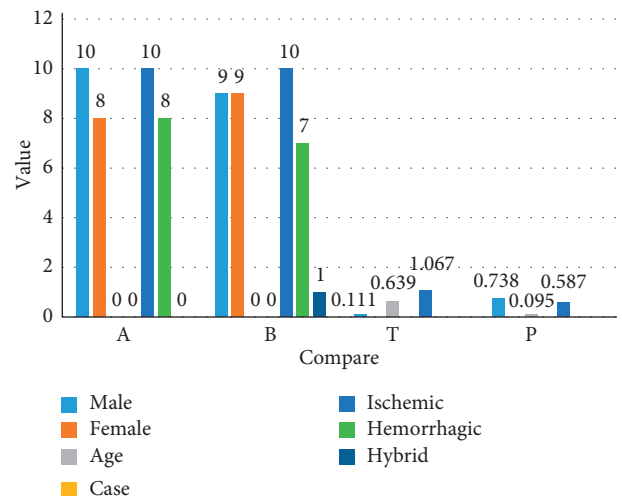


FIGURE 3: Comparison of motor skills of the two groups of patients before and after treatment.

We can see from Figures 5 and 6 that after treatment 5.00% of patients in group A still have shoulder joint dislocation, which may be related to the unsatisfactory

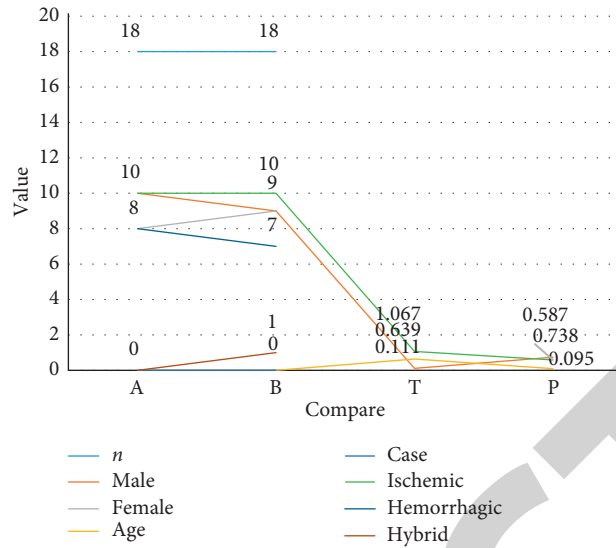


FIGURE 4: Clinical visits of stroke patients.

TABLE 3: Comparison of the efficacy of the two groups of patients after treatment.

Group	Number of cases (n)	Cure	Effective	Invalid	Total effective rate
Observation group	40	23 (57.50)	15 (37.50)	2 (5.00)	95.00%
Control group	39	13 (33.33)	15 (38.46)	11 (28.21)	71.79%
X^2					7.73
P					0.015

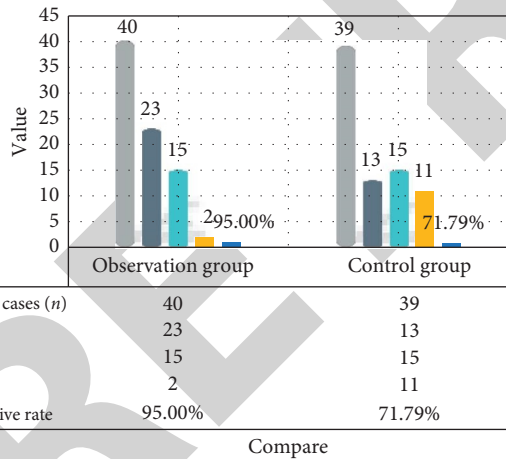


FIGURE 5: The dislocation of the shoulder joint of the two groups of patients before treatment.

improvement of muscle strength and muscle tension around the shoulder joint. Acupuncture is a rehabilitation treatment method with the characteristics of traditional Chinese medicine. Through the stimulation of corresponding acupoints, it regulates the *qi*, blood, and body fluid of the body's viscera and meridians and promotes the recovery of the functions of the viscera and meridians.

As can be seen from Table 4, the scores of the simplified Fugl-Meyer function scale (upper extremity, lower extremity) of the limbs in the three groups were significantly

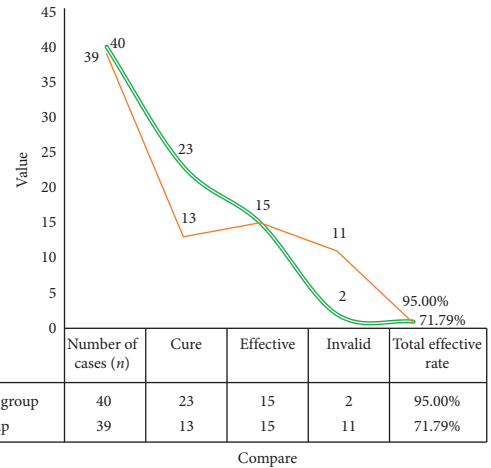


FIGURE 6: The dislocation of the shoulder joint of the two groups of patients after treatment.

increased after treatment ($P < 0.05$), and the above scores in group C were significantly higher than those in groups A and B (both $P < 0.05$). There was no statistically significant difference between group A and group B (all $P > 0.05$).

Figures 7 and 8 show that upper limb motor dysfunction is a major symptom of stroke patients with hemiplegia, while shoulder pain is the most important factor affecting upper limb motor function, which directly affects the patient's survival and rehabilitation quality. The incidence of shoulder pain in hemiplegia with cerebrovascular disease was

TABLE 4: Simplified Fugl-Meyer functional capacity of limbs before and after treatment in 3 groups.

Group	Before therapy		After treatment	
	Upper limb	Lower limbs	Upper limb	Lower limbs
A	33.25	19.21	54.22	26.12
B	32.98	19.93	53.10	25.38
C	34.11	20.40	59.84	30.37

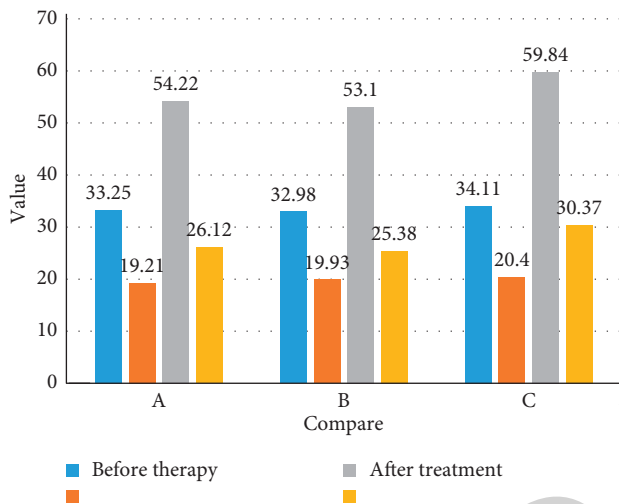


FIGURE 7: Comparison of shoulder pain perception of the three groups of patients before and after treatment.

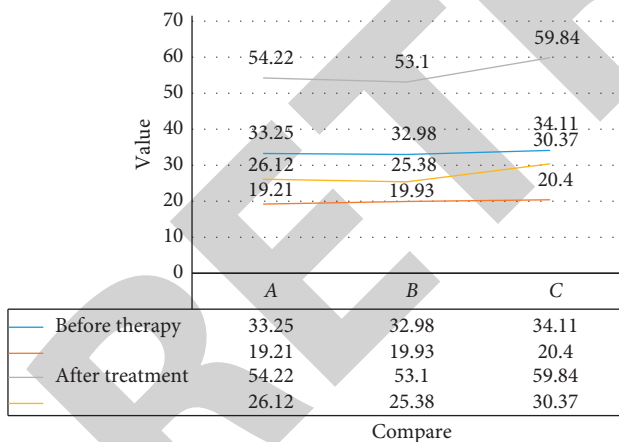


FIGURE 8: Comparison of upper limb motor function recovery of the three groups of patients before and after treatment.

reported in foreign countries from 16% to 72%, and domestic reports were 5% to 84% [5]. Therefore, timely and effective relief of shoulder pain will play a very important role in the recovery of upper limb motor function, which is also the entry point of acupuncture rehabilitation clinical treatment. There are many reasons for shoulder pain after hemiplegia. It is generally believed that spasm of shoulder muscles and ligaments, local swelling and inflammation, and shoulder subluxation are the main factors that cause pain. Some scholars also believe that because of the predominance

of upper limb flexor spasm after stroke the scapula sinks and retracts, and the shoulder joint rotates internally, so the shoulder joint lifting and abduction are limited and painful, and the pain and fear are again increase the tension of the flexor muscles, so that the affected limbs fall into the vicious circle of pain-spasm-pain. The shoulder pain further restricts the passive and active movement of the upper limbs. Therefore, only the elimination of pain can help the recovery of upper limb motor function.

5. Conclusions

Acupuncture is a rehabilitation method with the characteristics of Chinese medicine. By stimulating various contact points, it regulates the *qi*, blood, and body fluids of internal organs and meridians and promotes the recovery of internal organs and meridians. At present, acupuncture therapy is widely used to recover dysphagia and limb cramps after stroke. The vision of smart medical care with the continuous improvement of people's living standards, people pay more and more attention to medical care, and the meaning of wisdom is becoming clearer. Artificial intelligence is slowly invading the field of healthcare, and smart healthcare has an intangible impact on people's health. Medical health behavior. With the help of technologies such as the Internet of Things, cloud computing, and big data, smart healthcare has gained new industry prospects and growth opportunities in open medical and social integration, chronic diseases and medical relationship management. For example, many diseases are caused by poor lifestyles. In the future, smart medicine can capture people's lifestyles and help people prevent diseases through new technologies. Another example is smart medical imaging, which enables doctors to quickly search for malignant tumors and cancers. Check etc. The core of smart healthcare is still people-oriented. Medical services must be people-oriented. Only people-oriented smart medical design can achieve sustainable development. Medicine and healthcare are one of the industries that pay the most attention to humanitarian care, and user experience design has become a major challenge in the field of smart medicine. With the development of smart healthcare, medical services like humans can recognize, think, and learn at all levels of resource integration, industry development, information dissemination, role communication, the Internet, and user experience and have broad industry prospects and growth. opportunity.

Data Availability

Data sharing is not applicable to this article as no datasets were generated or analyzed during the current study.

Conflicts of Interest

The authors declare that they have no conflicts of interest.

References

- [1] J. J. Sikorski, J. Haughton, and M. Kraft, "Blockchain technology in the chemical industry: machine-to-machine

- electricity market,” *Applied Energy*, vol. 195, no. 1, pp. 234–246, 2017.
- [2] Z. Sayedalamin, A. Alshuaibi, O. Almutairi, M. Baghaffar, T. Jameel, and M. Baig, “Utilization of smart phones related medical applications among medical students at King Abdulaziz University, Jeddah: a cross-sectional study,” *Journal of Infection and Public Health*, vol. 9, no. 6, pp. 691–697, 2016.
 - [3] A. Picelli, S. Bonazza, D. Lobba et al., “Suprascapular nerve block for the treatment of hemiplegic shoulder pain in patients with long-term chronic stroke: a pilot study,” *Neurological Sciences: Official Journal of the Italian Neurological Society and of the Italian Society of Clinical Neurophysiology*, vol. 38, no. 9, pp. 1697–1701, 2017.
 - [4] Y. Zhang and J. Wen, “The IoT electric business model: using blockchain technology for the internet of things,” *Peer-to-Peer Networking and Applications*, vol. 10, no. 4, pp. 983–994, 2017.
 - [5] P. Yeoh, “Regulatory issues in blockchain technology,” *Journal of Financial Regulation and Compliance*, vol. 25, no. 2, pp. 196–208, 2017.
 - [6] M. H. Miraz and M. Ali, “Applications of blockchain technology beyond cryptocurrency,” *Annals of Emerging Technologies in Computing*, vol. 2, no. 1, pp. 1–6, 2018.
 - [7] M. Elhoseny, G.-B. Bian, S. K. Lakshmanprabu, K. Shankar, A. K. Singh, and W. Wu, “Effective features to classify ovarian cancer data in internet of medical things,” *Computer Networks*, vol. 159, pp. 147–156, 2019.
 - [8] F. Xiao and W. Ding, “Divergence measure of pythagorean fuzzy sets and its application in medical diagnosis,” *Applied Soft Computing*, vol. 79, pp. 254–267, 2019.
 - [9] M. O’Dair and Z. Beaven, “The networked record industry: how blockchain technology could transform the record industry,” *Strategic Change*, vol. 26, no. 5, pp. 471–480, 2017.
 - [10] J. Sun, J. Yan, and K. Z. K. Zhang, “Blockchain-based sharing services: what blockchain technology can contribute to smart cities,” *Financial Innovation*, vol. 2, no. 1, pp. 1–9, 2016.
 - [11] R. Beck, M. Avital, M. Rossi, and J. B. Thatcher, “Blockchain technology in business and information systems research,” *Business & Information Systems Engineering*, vol. 59, no. 6, pp. 381–384, 2017.
 - [12] M. A. Engelhardt, “Hitching healthcare to the chain: an introduction to blockchain technology in the healthcare sector,” *Technology Innovation Management Review*, vol. 7, no. 10, pp. 22–34, 2017.
 - [13] Y. Yuan, T. Zhou, A. Y. Zhou et al., “Blockchain technology: from data intelligence to knowledge automation,” *Zidonghua Xuebao/Acta Automatica Sinica*, vol. 43, no. 9, pp. 1485–1490, 2017.
 - [14] M. K. Choi, O. K. Park, C. Choi et al., “Cephalopod-inspired miniaturized suction cups for smart medical skin,” *Advanced Healthcare Materials*, vol. 5, no. 1, pp. 80–87, 2016.
 - [15] D. Jiang, W. Li, and H. Lv, “An energy-efficient cooperative multicast routing in multi-hop wireless networks for smart medical applications,” *Neurocomputing*, vol. 220, no. 12, pp. 160–169, 2016.
 - [16] Z. Wang, “Blind batch encryption-based protocol for secure and privacy-preserving medical services in smart connected health,” *IEEE Internet of Things Journal*, vol. 6, no. 6, pp. 9555–9562, 2019.
 - [17] J. H. Cho, S. H. Jung, S. M. Yang et al., “Atypical calcific tendinitis involving the long biceps tendon: a rare cause of hemiplegic shoulder pain,” *Journal of Back and Musculoskeletal Rehabilitation*, vol. 32, no. 4, pp. 1–5, 2018.
 - [18] E.-M. Oh and E.-J. Lee, “The effect of chuna manual therapy for shoulder pain in hemiplegic patients after stroke: a systematic review and meta-analysis,” *Journal of Korean Medicine Rehabilitation*, vol. 30, no. 3, pp. 89–101, 2020.
 - [19] A. Hochsprung, A. Domínguez-Matito, A. López-Hervás et al., “Short- and medium-term effect of kinesio taping or electrical stimulation in hemiplegic shoulder pain prevention: a randomized controlled pilot trial,” *Neurorehabilitation*, vol. 41, no. 4, pp. 801–810, 2017.
 - [20] Y. Huang, K. Chang, T. Liou, C. Cheng, L. Lin, and S. Huang, “Effects of Kinesio taping for stroke patients with hemiplegic shoulder pain: a double-blind, randomized, placebo-controlled study,” *Journal of Rehabilitation Medicine*, vol. 49, no. 3, pp. 208–215, 2017.
 - [21] Z. Adey-Wakeling, E. Liu, M. Crotty et al., “Hemiplegic shoulder pain reduces quality of life after acute stroke: a prospective population-based study,” *American Journal of Physical Medicine and Rehabilitation*, vol. 95, no. 10, pp. 758–763, 2016.
 - [22] M. Abdel-Basset, M. Mohamed, M. Elhoseny, L. H. Son, F. Chiclana, and A. E.-N. H. Zaied, “Cosine similarity measures of bipolar neutrosophic set for diagnosis of bipolar disorder diseases, artificial intelligence in medicine,” vol. 101, Article ID 101735, 2019, In press.
 - [23] A. Sobierajska-Rek, “Hemiplegic shoulder pain—clinical factors and pain pressure sensitivity,” *Fizjoterapia Polska*, vol. 17, no. 4, pp. 24–32, 2017.
 - [24] S. P. Sonune, A. K. Gaur, and S. Gupta, “Ultra-sound guided suprascapular nerve block IN hemiplegic shoulder pain,” *Journal of Evidence Based Medicine and Healthcare*, vol. 5, no. 46, pp. 3228–3232, 2018.
 - [25] J. Sang-Mi and C. Won-Ho, “Effects of virtual reality intervention on upper limb motor function and activity of daily living in patients with lesions in different regions of the brain,” *Journal of Physical Therapy Science*, vol. 29, no. 12, pp. 2103–2106, 2017.
 - [26] K. Itotani, M. Itotani, H. Morofuji, and J. Kato, “Use of the TraceCoder® for a home rehabilitation user with decline of upper limb motor function,” *Rigakuryoho Kagaku*, vol. 31, no. 1, pp. 67–72, 2016.
 - [27] J. Li, X. M. Meng, R. Y. Li, R. Zhang, Z. Zhang, and Y. F. Du, “Effects of different frequencies of repetitive transcranial magnetic stimulation on the recovery of upper limb motor dysfunction in patients with subacute cerebral infarction,” *Neural Regeneration Research*, vol. 11, no. 10, pp. 1584–1590, 2016.
 - [28] I. Aprile, M. Germanotta, A. Cruciani et al., “Upper limb robotic rehabilitation after stroke: a multicenter, randomized clinical trial,” *Journal of Neurologic Physical Therapy*, vol. 44, no. 1, pp. 3–14, 2020.
 - [29] B. Ding, F. Tian, and L. Zhao, “Digital evaluation algorithm for upper limb motor function rehabilitation based on micro sensor,” *Journal of Medical Imaging and Health Informatics*, vol. 11, no. 2, pp. 391–401, 2021.
 - [30] P. A. McNulty, A. G. Thompson-Butel, S. G. Faux et al., “The efficacy of Wii-based movement therapy for upper limb rehabilitation in the chronic poststroke period: a randomized controlled trial,” *International Journal of Stroke*, vol. 10, no. 8, pp. 1253–1260, 2016.