

Research Article

The Importance of Scalar Fields as Extradimensional Metric Components in Kaluza-Klein Models

P. H. R. S. Moraes^{1,2} and R. A. C. Correa ^{1,3}

¹Instituto Tecnológico de Aeronáutica (ITA), São José dos Campos, 12228-900 São Paulo, Brazil

²Università degli Studi di Napoli Federico II (UNINA), Napoli 80126, Italy

³Scuola Internazionale Superiore di Studi Avanzati (SISSA), Via Bonomea 265, 34136 Trieste, Italy

Correspondence should be addressed to R. A. C. Correa; fis04132@gmail.com

Received 26 October 2018; Revised 17 January 2019; Accepted 23 January 2019; Published 18 February 2019

Academic Editor: Charalampos C. Moustakidis

Copyright © 2019 P. H. R. S. Moraes and R. A. C. Correa. This is an open access article distributed under the Creative Commons Attribution License, which permits unrestricted use, distribution, and reproduction in any medium, provided the original work is properly cited.

Extradimensional models are achieving their highest popularity nowadays, among other reasons, because they can plausibly explain some standard cosmology issues, such as the cosmological constant and hierarchy problems. In extradimensional models, we can infer that the four-dimensional matter rises as a geometric manifestation of the extra coordinate. In this way, although we still cannot see the extra dimension, we can relate it to physical quantities that are able to exert such a mechanism of matter induction in the observable universe. In this work we propose that scalar fields are those physical quantities. The models here presented are purely geometrical no matter the fact that Lagrangian is assumed and even the scalar fields are contained in the extradimensional metric. The results are capable of describing different observable cosmic features and yield an alternative to ultimately understand the extra dimension and the mechanism in which it is responsible for the creation of matter in the observable universe.

1. Introduction

Extra dimensions have been an useful artefact in Physics for a long time. Five years after the appearance of Einstein's General Relativity (GR), T. Kaluza has firstly expanded it to encompass an extra dimension [1]. Kaluza could describe both four-dimensional (4D) GR and Maxwell's electromagnetism equations from an appropriate choice for the five-dimensional (5D) metric, in which the extra terms depend on the electromagnetic potential A_a as [2]

$$g_{AB} = \begin{pmatrix} g_{ab} + A_a A_b \phi^2 & A_a \phi^2 \\ A_b \phi^2 & \phi^2 \end{pmatrix}, \quad (1)$$

with A, B running from 0 to 4, a, b running from 0 to 3, and ϕ being a scalar field. Such an achievement can be made by substituting (1) in the 5D version of GR field equations for vacuum, i.e.,

$$G_{AB} = 0. \quad (2)$$

In this way, for Kaluza, matter in 4D space is a purely geometric manifestation of a 5D empty space. This confirmation agrees with a goal once espoused by Einstein, that *matter comes from geometry*, and shall be revisited and clarified.

Since Kaluza's work, the extradimensional concept has been applied to gravitational waves [3, 4], gravitational lensing [5], and cosmology [6], among many other areas [7–11].

In the present article, the Kaluza's concept of extra dimension will be taken into account. On this regard, it should be reminded that, in the year of 1926, O. Klein has significantly contributed to Kaluza's idea [12]. In order to account for the fact that apparently we live in a 4D world, Kaluza has proposed the so-called "cylindrical condition", which consists in the annulment of all derivatives with respect to the extra coordinate. Klein has made the cylindrical condition less artificial, by arguing that the annulment of the derivatives is a consequence of the extra dimension compactification.

An elegant, simple, and useful form of physically interpreting Kaluza-Klein (KK) model came from a series of

works by P.S. Wesson and collaborators [13–21]. Wesson’s idea, which gave rise to the so-called “Induced Matter Model” (IMM) (sometimes referred to as “Space-Time-Matter Model”), was to collect all the terms coming from the extra dimension in (2) and make them pass to its *rhs* as an (induced) energy-momentum tensor.

The IMM has been widely applied to cosmology, yielding interesting and testable results [22–27].

In what concerns 5D models, a novel form of understanding the extra dimension is being established [28]. It is stated that we can infer from the extra dimension consequences that it has to do with the origin of matter and particle masses; though to fully understand these will require a better knowledge of the scalar field associated with the extra coordinate. The extra dimension should be accepted, then, in this context, as an useful concept.

From the above paragraph perspective, it is plausible to see the extra dimension as directly related to a scalar field, with this scalar field being responsible for inducing matter in the 4D universe. This is the main goal of the present article, in which the models will be constructed from a purely geometric approach; that is, the scalar fields will be considered as a part of the 5D metric in empty space.

Recently, the Higgs field existence was confirmed in laboratory [29, 30], which has optimized the possibility of existence of other scalar fields, such as quintessence, for example, which are named scalar fields responsible for the universe dynamics [31–34]. Scalar field models are also approached in the study of false vacuum transitions [35, 36], which, for instance, concern to statistical mechanics and also cosmology, the latter because the transition from false to true vacua can be interpreted as transitions between different stages of the universe dynamics [37].

Another contexts where scalar fields play a key role can be found during the generation of coherent structures after cosmic inflation [38–40], in Lorentz and CPT breaking systems [41–46], in regular asymptotically AdS reflecting star backgrounds [47], in hydrodynamic fluctuations [48], and in the production of gravitational waves during preheating after inflation [49, 50].

In the next section we will start relating directly a scalar field with the extra dimension by applying the IMM for two different cases of (1). Our proposal is to construct models that relate different scalar fields with the extra dimension and analyse the referred consequences.

2. Induced Matter Model Applications

In this section we will consider two different cases of KK metric (1) and apply the IMM to them. In both cases, the electromagnetic potential A_a will be neglected.

Case I ($a = a(t)$ and $\phi = \phi(t)$). We are going to start by considering the simplest case for the scalar field of (1), that is, $\phi = \phi(t)$. The line element can then be written as

$$dS^2 = dt^2 - a(t)^2 (dx^2 + dy^2 + dz^2) - \phi(t)^2 dl^2, \quad (3)$$

in which g_{ab} was taken as the Friedmann-Robertson-Walker metric with null curvature (in accord with observations [51]), $a(t)$ is the scale factor, which dictates how distances grow in an expanding universe, l is the extra coordinate, and throughout this work, it will be assumed units such that $8\pi G = c = 1$.

Let us apply the IMM to (3). This consists in evaluating (2), collecting all the extradimensional terms, and relating them with the matter content of the observable universe, that is, matter-energy density ρ and pressure p .

The Einstein tensor for (3) reads

$$G_0^0 = 3 \left(\frac{\dot{a}}{a} \right)^2 + 3 \frac{\dot{a}\dot{\phi}}{a\phi}, \quad (4)$$

$$G_1^1 = 2 \frac{\ddot{a}}{a} + \left(\frac{\dot{a}}{a} \right)^2 + \frac{\ddot{\phi}}{\phi} + 2 \frac{\dot{a}\dot{\phi}}{a\phi}, \quad (5)$$

$$G_2^2 = G_3^3 = G_1^1, \quad (6)$$

$$G_4^4 = 3 \left[\frac{\ddot{a}}{a} + \left(\frac{\dot{a}}{a} \right)^2 \right], \quad (7)$$

in which dots represent time derivatives. We consider, as in braneworld models, that one cannot find matter in the extra dimension; that is, the energy-momentum tensor of a perfect fluid is written as $T_B^A = \text{diag}(\rho, -p, -p, -p, 0)$.

Equations (4), (5), and (7) yield, respectively,

$$\frac{\dot{a}}{a} = -\frac{\dot{\phi}}{\phi}, \quad (8)$$

$$2 \frac{\ddot{a}}{a} - \left(\frac{\dot{a}}{a} \right)^2 = -\frac{\ddot{\phi}}{\phi}, \quad (9)$$

with $\rho = -3(\dot{a}/a)(\dot{\phi}/\phi)$, $p = 2(\dot{a}/a)(\dot{\phi}/\phi) + \ddot{\phi}/\phi$ and the trivial differential equation

$$\frac{\ddot{a}}{a} + \left(\frac{\dot{a}}{a} \right)^2 = 0, \quad (10)$$

whose solution reads

$$a(t) = \alpha_1 \sqrt{2t - \beta_1}, \quad (11)$$

with α_1 and β_1 being constants.

Substituting (11) into (8)-(9) and rearranging them yield

$$\frac{\ddot{\phi}}{\phi} = \frac{3}{\beta_1 - 2t}. \quad (12)$$

The solution for (12) is

$$\phi(t) = \gamma_1 - \frac{\delta_1}{\sqrt{2t - \beta_1}}, \quad (13)$$

with γ_1 and δ_1 constants.

Figure 1 shows the time evolution of $\phi(t)$ for different values of the constants involved.

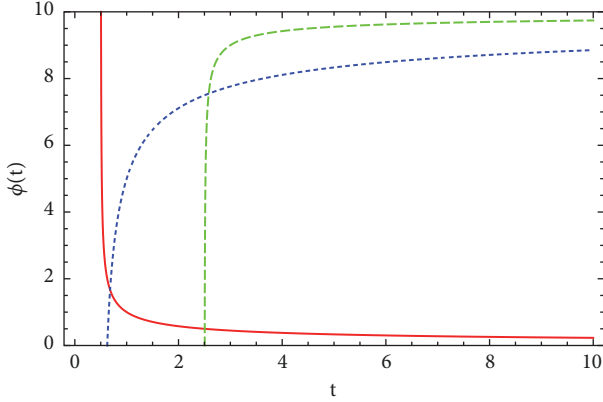


FIGURE 1: Case I: time evolution of ϕ . Dotted (blue) line stands for $\beta_1 = 1$, $\gamma_1 = 10$, and $\delta_1 = 5$, while for the dashed (green) line and solid (red) line, $\beta_1 = 5$, $\gamma_1 = 10$, and $\delta_1 = 1$ and $\beta_1 = 1$, $\gamma_1 = 0$, and $\delta_1 = -1$, respectively.

From (13), the matter-energy density and pressure of the universe in this model read:

$$\rho(t) = \frac{3\delta_1}{(\beta_1 - 2t)^2 (\delta_1 - \gamma_1 \sqrt{2t - \beta_1})}, \quad (14)$$

$$p(t) = \frac{\delta_1}{(\beta_1 - 2t)^2 (\delta_1 - \gamma_1 \sqrt{2t - \beta_1})}. \quad (15)$$

Case II ($a = a(t, l)$ and $\phi = \phi(t)$). Let us generalize the previous case. If one makes $\phi(t) \rightarrow \phi(t, l)$ in (3), the Einstein tensor stays the same. Therefore, let us make $a(t) \rightarrow a(t, l)$ in (3) as

$$dS^2 = dt^2 - a(t, l)^2 (dx^2 + dy^2 + dz^2) - \phi(t)^2 dl^2, \quad (16)$$

i.e., it is assumed that the extra coordinate also influences the scale factor.

The Einstein tensor, in this case, reads

$$G_0^0 = 3 \left(\frac{\dot{a}}{a} \right)^2 + 3 \left\{ \frac{\dot{a}\dot{\phi}}{a\phi} - \frac{1}{\phi^2} \left[\frac{a''}{a} + \left(\frac{a'}{a} \right)^2 \right] \right\}, \quad (17)$$

$$G_1^1 = 2 \frac{\ddot{a}}{a} + \left(\frac{\dot{a}}{a} \right)^2 + \frac{\ddot{\phi}}{\phi} + 2 \frac{\dot{a}\dot{\phi}}{a\phi} - \frac{1}{\phi^2} \left[2 \frac{a''}{a} + \left(\frac{a'}{a} \right)^2 \right], \quad (18)$$

$$G_2^2 = G_3^3 = G_1^1, \quad (19)$$

$$G_4^4 = 3 \left[\frac{\ddot{a}}{a} + \left(\frac{\dot{a}}{a} \right)^2 \right] - \frac{3}{\phi^2} \left(\frac{a'}{a} \right)^2, \quad (20)$$

$$G_0^4 = G_4^0 = 3 \left(\frac{a'\dot{\phi}}{a\phi} - \frac{\dot{a}'}{a} \right), \quad (21)$$

with $' \equiv \partial/\partial l$.

The IMM application in (17), (18), (20), and (21) yields

$$\left(\frac{\dot{a}}{a} \right)^2 = -\frac{\dot{a}\dot{\phi}}{a\phi} + \frac{1}{\phi^2} \left[\frac{a''}{a} + \left(\frac{a'}{a} \right)^2 \right], \quad (22)$$

$$2 \frac{\ddot{a}}{a} = -\frac{\ddot{\phi}}{\phi} - \frac{\dot{a}\dot{\phi}}{a\phi} + \frac{1}{\phi^2} \frac{a''}{a}, \quad (23)$$

$$\frac{\ddot{a}}{a} + \left(\frac{\dot{a}}{a} \right)^2 - \frac{1}{\phi^2} \left(\frac{a'}{a} \right)^2 = 0, \quad (24)$$

$$\frac{\dot{\phi}}{\phi} = \frac{\dot{a}'}{a'}. \quad (25)$$

Solving (22)-(25) for $a(t, l)$ yields

$$a(t, l) = \alpha_2 [(2\kappa - 1)t]^{(1/2)((3\kappa-1)/(2\kappa-1))} e^{\kappa l}, \quad (26)$$

with α_2 being an arbitrary constant and κ being the constant of separation of variables.

From solution (26), we can write the Hubble and deceleration parameters, respectively, as

$$H(t) = \frac{1 - 3\kappa}{1 - 2\kappa} \frac{1}{2t}, \quad (27)$$

$$q(t) = \frac{\kappa - 1}{3\kappa - 1}, \quad (28)$$

with the former being related to the recession velocity of galaxies according to the Hubble's law, $H = \dot{a}/a$, and the latter being defined so that $q < 0$ represents an accelerated expansion of the universe, with $q = -\ddot{a}a/\dot{a}^2$.

In the next section, some cosmological features of Cases I and II of the geometric model described by metric (1) will be presented.

3. Cosmological Features

Let us analyse the solutions obtained in the last section from a cosmological perspective. We will start recalling solutions (14) and (15) of Case I. Remarkably, the relation between these equations is a factor of 3. The relation between p and ρ is known as equation of state (EoS) ω and it is well known that $\omega = 1/3$ for the radiation-dominated era of the universe [52].

Therefore, purely from geometry (see (3)), relativistic matter could be described. Specifically, this is a radiation-dominated universe model. In fact, such an argumentation is confirmed from (11) since in standard model of cosmology, $a(t) \sim \sqrt{t}$ is exactly the time proportionality of the scale factor in a radiation-dominated universe [52].

It is also possible to corroborate (13) as related to a scalar field which describes the radiation-dominated universe. On this regard, in [53] a cosmological model from a primordial scalar field was constructed. The solution they have obtained for the scalar field was $\sim 1/\sqrt{t}$, in agreement with (13).

There is another form of indicating the correlation between solution (13) and the radiation era, by analysing Figure 1. By firstly checking the dotted (blue) and dashed

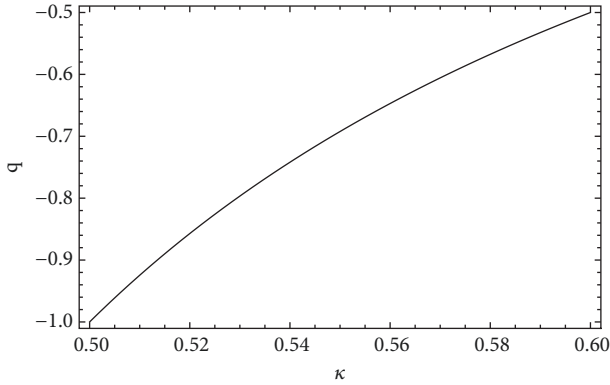


FIGURE 2: Case II: q as a function of κ .

(green) curves, one realizes that, for small values of time, the field $\phi(t)$ still does not act. In fact, if a scalar field is related to the dynamics of a radiation-dominated universe, it is not expected to operate until the end of the inflationary era [54], i.e., the inflaton decaying. On the other hand, the solid (red) curve could be related to the “graceful exit” question [55, 56], which is the necessity of the inflaton to continuously decay into radiation. In this way, the high values of $\phi(t)$ for low values of t would be a consequence of the initial values of ϕ being related to the decaying values of the inflaton.

It is interesting and valuable to remark the following: although the electromagnetic potential was taken as null, an electromagnetic radiation solution was obtained in Case I. This implies that, in KK theory, the extra coordinate might also retain some information on the electromagnetic force.

Now we will recall Case II of the previous section. The model solution for the deceleration parameter is presented in (28). The deceleration parameter present observed value was recently constrained from the 192 ESSENCE SNe Ia data to be $q_0 = -0.788 \pm 0.182$ [57]. From (28), the range of values of κ which is in accordance with observations is shown in Figure 2 .

In this way, purely from the metric (17) of Case II, in which the scale factor is assumed to be sensitive to both t and l , it is possible to predict an accelerated expansion for the universe ($q < 0$). The accelerated expansion of the universe was predicted by Type Ia supernova observations in the late 1990s of the last century [58, 59] and is an essential dynamical feature for cosmological models.

Figure 2 also reveals that the fiducial value $q_0 = -0.788$ is obtained at $\kappa = 0.537$.

Once the value of κ is constrained, one can plot the scale factor in terms of t and l as Figure 3.

Case II has also shown that the scalar field in the extra dimension may be the mechanism responsible not only for inducing matter in the observable universe, but also for inducing the counter-intuitive effect of accelerated expansion. That is, a scalar field “living” in the extra dimension together with a scale factor that “feels” the presence of such an extra dimension may be the responsible for the cosmic acceleration, evading the cosmological constant problem of standard cosmology [51, 60, 61].

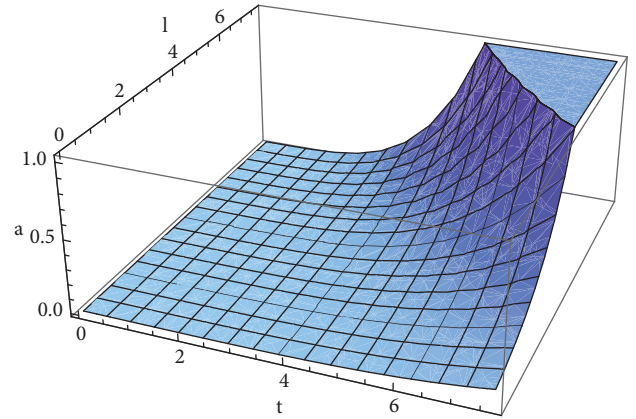


FIGURE 3: Case II: a as a function of t and l for $\alpha_2 = 1$ and $\kappa = 0.537$.

From Figure 3, one can note that the value of l , i.e., the length scale of the extra coordinate, has a profound influence on the evolution of the scale factor. One realizes that the smaller the value of l , the greater the age of the universe, which is the value of t for $a(t, l) = a_0 = 1$ (the present value of the scale factor [52]). According to observations of fluctuations on the temperature of cosmic microwave background radiation [51], the present age of the universe is $\sim 1.4 \times 10^{10} \text{ yr}$. When inserting the natural constants in Case II, constrains to l might be obtained. One expects such constrains to respect others, obtained by completely different approaches [62–64].

4. Discussion

In the present article, we have constructed Kaluza-Klein models purely from the geometrical sector of a gravitational theory. The material content of the models has arisen as a geometrical manifestation of an extradimensional empty space-time.

Particularly, we have investigated the importance of scalar fields as extradimensional components of the metric. For the sake of generality, two cases for the metric (1), named $a = a(t)$ and $a = a(t, l)$, were investigated. In both cases, $A_a = 0$; models including non-null electromagnetic potentials might be reported as a forthcoming work.

Case I has shown to be able to describe relativistic matter as a geometrical manifestation of a 5D empty space-time. The features of a radiation-dominated universe could be observed in the scale factor solution that evolves as a standard Friedmann-Robertson-Walker universe dominated by radiation, while in standard cosmology, the solutions for a radiation-dominated era are obtained from the assumption of an EoS like $p = \rho/3$, in the present model, such an EoS was obtained (rather than assumed), as one can check (14)-(15). Beyond that, the solution (13) for the scalar field responsible for inducing matter in the 4D observable universe agrees with that obtained in [53], for which the authors have constructed a cosmological model from a primordial scalar field.

In Case II, the induced cosmological solutions led to an accelerated expansion of the universe. This was reflected in

the negative values of q , which, for a range of values for the free parameter κ , was in agreement with observations [57]. In this manner, this model has shown that it is possible to describe the cosmic acceleration as a purely geometrical effect, evading the cosmological constant problem [51, 60, 61].

It is interesting to note that, for $\kappa = 0$ in Case II, the radiation-dominated universe is retrieved, since $q \rightarrow 1$ as $\kappa \rightarrow 0$ and 1 is the deceleration parameter value at the radiation-dominated stage, according to standard cosmology [52].

The same happens if one applies the cylindrical condition in Case II. In fact, in KK theory, when recovering 4D gravity and Maxwell's equations from the cylindrical condition application to (1)-(2), the energy-momentum tensor induced by extradimensional geometrical terms is the one of electromagnetisms, i.e., $T_{ab}^{EM} = g_{ab}F_{cd}F^{cd}/4 - F_a^c F_{bc}$, with $F_{ab} \equiv \partial_a A_b - \partial_b A_a$. At the same time, it can be shown that the cylindrical condition application yields the EoS of radiation [2]. Such features were obtained in the present model, as one can see that Case I can be obtained from the cylindrical condition application in Case II.

One may wonder about the detectability of the extra coordinate. As we mentioned in the Introduction, a new concept to understand the extra dimension has been established, in which the extra coordinate has to do with the creation of matter in the observable universe [28]. As pointed by the authors in [28], the extra dimension should be in this sense accepted as an useful concept, and to better understand the way it induces matter in the 4D observable universe requires a better knowledge of the scalar field associated with the extra coordinate. That is why we have inserted in the extra part of the metric a scalar field ϕ .

Such a scalar field has shown to indeed have an important role in inducing different kinds of matter in the 4D universe. When the scale factor a depends on t only, ϕ has shown to be responsible for inducing relativistic matter in the observable universe. Remarkably, when a depends on t and l , the field induces the fluid responsible for accelerating the expansion of the universe in standard model, i.e., dark energy. This was shown from the negative values obtained for q with no need of a cosmological constant.

In this way, from the approached perspective of the interpretation of the extra dimension, those matter fields in the observable universe are nothing but manifestations of the extra coordinate, recalling that the model does not need any kind of matter Lagrangian. In other words, by facing the extra coordinate as responsible for inducing matter in the 4D universe, as it was assumed throughout this paper, the appearance of the matter fields, such as radiation and dark energy, is nothing but manifestations and evidences for the existence of the extra dimension in the present model.

We would like to emphasize that by using scalar fields as extradimensional metric components we can open a new window to explain some standard cosmology issues. Therefore, in order to deal with these questions, we shall present in near future an approach in which the line element has a background with two interacting scalar fields. In this case, we hope that, from such an inclusion, a greater number of new

cosmological effects and phenomenological observations can be described.

Data Availability

The data used to support the findings of this study are included within the article.

Conflicts of Interest

The authors declare that they have no conflicts of interest.

Acknowledgments

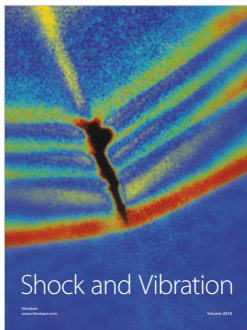
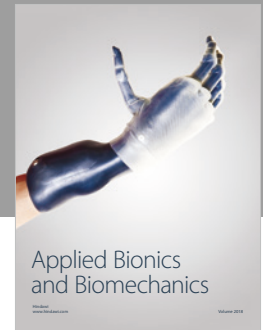
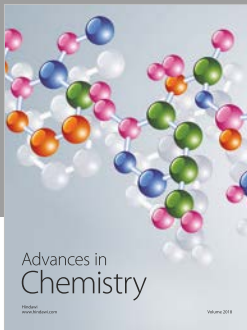
P. H. R. S. Moraes would like to thank São Paulo Research Foundation (FAPESP), Grant 2015/08476-0, for financial support. R. A. C. Correa is partially supported by FAPESP (Foundation for Support to Research of the State of São Paulo) under Grants nos. 2016/03276-5 and 2017/26646-5.

References

- [1] T. Kaluza, "Zum Unitatsproblem der Physik," *Sitzungsber Preuss Akad Wiss. Berlin (Math.Phys.)*, vol. 33, p. 966, 1921.
- [2] J. M. Overduin and P. S. Wesson, "Kaluza-Klein gravity," *Physics Reports*, vol. 283, no. 5-6, pp. 303-378, 1997.
- [3] J. Ponce de Leon, "FLRW universes from "wave-like" cosmologies in 5D," *International Journal of Modern Physics D: Gravitation, Astrophysics, Cosmology*, vol. 12, no. 6, pp. 1053-1065, 2003.
- [4] P. H. R. S. Moraes and O. D. Miranda, "Constraining the brane tension in Randall-Sundrum cosmology through gravitational waves from binary neutron stars," *Astrophysics and Space Science*, vol. 354, p. 645, 2014.
- [5] J. Sadeghi et al., "Strong gravitational lensing in a charged squashed Kaluza-Klein black hole," *Astrophys. Space Sci*, vol. 343, p. 559, 2013.
- [6] P. H. Moraes and R. A. Correa, "Braneworld cosmology in f(R,T) gravity," *Astrophysics and Space Science. An International Journal of Astronomy, Astrophysics and Space Science*, vol. 361, no. 3, p. 91, 2016.
- [7] X. Calmet and A. Neronov, "Kaluza-Klein theories and the anomalous magnetic moment of the muon," *Physical Review D: Particles, Fields, Gravitation and Cosmology*, vol. 65, Article ID 067702, 2002.
- [8] A. Neronov, "Fermion masses and quantum numbers from extra dimensions," *Physical Review D*, vol. 65, Article ID 044004, 2002.
- [9] C. Csáki, Y. Shirman, J. Terning, and M. Waterbury, "Kaluza-Klein monopoles and their zero modes," *Physical Review Letters*, vol. 120, Article ID 071603, 2018.
- [10] V. H. Satheeshkumar and P. K. Suresh, "Gravity and large extra dimensions," *Advances in Astronomy*, vol. 2011, Article ID 189379, 12 pages, 2011.
- [11] K. Garrett and G. Duda, "Dark matter: a primer," *Advances in Astronomy*, vol. 2011, Article ID 968283, 22 pages, 2011.
- [12] O. Klein, "Quantentheorie und fünfdimensionale Relativitätstheorie," *Zeitschrift für Physik*, vol. 37, no. 12, pp. 895-906, 1926.
- [13] P. S. Wesson, "The properties of matter in kaluza-klein cosmology," *Modern Physics Letters A*, vol. 7, p. 921, 1992.

- [14] P. S. Wesson, "A physical interpretation of Kaluza-Klein cosmology," *The Astrophysical Journal*, vol. 394, p. 19, 1992.
- [15] J. Ponce de Leon and P. S. Wesson, "Exact solutions and the effective equation of state in Kaluza-Klein theory," *Journal of Mathematical Physics*, vol. 34, no. 9, pp. 4080–4092, 1993.
- [16] P. S. Wesson, P. S. Wesson, A. Billyard et al., "A theory of space, time and matter," *International Journal of Modern Physics A*, vol. 11, p. 3247, 1996.
- [17] H. Liu and P. S. Wesson, "Particle masses in Kaluza-Klein-Gordon theory and the reality of extra dimensions," *Modern Physics Letters A*, vol. 13, no. 33, pp. 2689–2694, 1998.
- [18] T. Fukui and J. M. Overduin, "The relation of generalized scalar-tensor theory with the 5D space-time-matter theory," *General Relativity and Gravitation*, vol. 31, no. 8, pp. 1159–1168, 1999.
- [19] P. S. Wesson, *Space-Time-Matter. Modern Kaluza-Klein Theory*, World Scientific, Singapore, 1999.
- [20] P. S. Wesson, "The status of modern five-dimensional gravity (a short review: why physics needs the fifth dimension)," *International Journal of Modern Physics D*, vol. 24, Article ID 153001, 2015.
- [21] P. H. Moraes, "Cosmic acceleration from varying masses in five dimensions," *International Journal of Modern Physics D: Gravitation, Astrophysics, Cosmology*, vol. 25, no. 1, Article ID 1650009, 11 pages, 2016.
- [22] J. M. Overduin, "Decaying dark energy in higher-dimensional gravity," *Astronomy & Astrophysics*, vol. 473, p. 727, 2007.
- [23] J. Ponce de Leon, "Brans-Dicke cosmology in 4D from scalar-vacuum in 5D," *Journal of Cosmology and Astroparticle Physics*, vol. 2003, article no. 030, 2010.
- [24] J. Ponce de Leon, "Late time cosmic acceleration from vacuum Brans-Dicke theory in 5D," *Classical and Quantum Gravity*, vol. 27, Article ID 095002, 2010.
- [25] J. M. Romero and M. Bellini, "Induced Matter Theory of gravity from a Weitzenböck 5D vacuum and pre-big bang collapse of the universe," *The European Physical Journal C*, vol. 73, p. 2317, 2013.
- [26] P. H. R. S. Moraes, "Cosmology from induced matter model applied to 5D $f(R, T)$ theory," *Astrophysics and Space Science*, vol. 352, p. 273, 2014.
- [27] P. H. R. S. Moraes, "Cosmological solutions from induced matter model applied to 5D $f(R, T)$ gravity and the shrinking of the extra coordinate," *The European Physical Journal C*, vol. 75, p. 168, 2015.
- [28] P. S. Wesson and J. M. Overduin, *Principles of Space-Time-Matter: Cosmology, Particles and Waves in Five Dimensions*, World Scientific, Singapore, 2018.
- [29] G. Aad, T. Abajyan, and B. Abbott, "Observation of a new particle in the search for the standard model higgs boson with the ATLAS detector at the LHC," *Physics Letters B*, vol. 716, no. 1, pp. 1–29, 2012.
- [30] S. Chatrchyan, V. Khachatryan, and A. M. Sirunyan, "Observation of a new boson at a mass of 125 GeV with the CMS experiment at the LHC," *Physics Letters B*, vol. 716, no. 1, pp. 30–61, 2012.
- [31] R. R. Caldwell, R. Dave, and P. J. Steinhardt, "Cosmological imprint of an energy component with general equation of state," *Physical Review Letters*, vol. 80, p. 1582, 1998.
- [32] P. H. R. S. Moraes and J. R. L. Santos, "Two scalar field cosmology from coupled one-field models," *Physical Review D*, vol. 89, Article ID 083516, 2014.
- [33] M. Khurshudyan, B. Pourhassan, R. Myrzakulov, and S. Chatterpadhyay, "An effective quintessence field with a power-law potential," *Astrophysics and Space Science*, vol. 356, p. 383, 2015.
- [34] R. Chaubey and R. Raushan, "Dynamical analysis of anisotropic cosmological model with quintessence," *Astrophysics and Space Science. An International Journal of Astronomy, Astrophysics and Space Science*, vol. 361, p. 215, 2016.
- [35] S. Coleman, "Fate of the false vacuum: semiclassical theory," *Physical Review D*, vol. 15, p. 2929, 1977.
- [36] C. G. Callan and S. Coleman, "Fate of the false vacuum. II. First quantum corrections," *Physical Review D: Particles, Fields, Gravitation and Cosmology*, vol. 16, no. 6, pp. 1762–1768, 1977.
- [37] R. A. C. Correa, P. H. R. S. Moraes, and R. Moraesda Rocha, "False vacuum transitions —analytical solutions and decay rate values," *Europhysics Letters*, vol. 111, Article ID 40003, 2015.
- [38] M. Gleiser, N. Graham, and N. Stamatopoulos, "Generation of coherent structures after cosmic inflation," *Physical Review D: Particles, Fields, Gravitation and Cosmology*, vol. 83, Article ID 096010, 2011.
- [39] R. A. C. Correa and A. de Souza Dutra, "On the study of oscillons in scalar field theories: a new approach," *Advances in High Energy Physics*, vol. 2016, Article ID 4176909, 8 pages, 2016.
- [40] J. Torrado, C. T. Byrnes, R. J. Hardwick, V. Vennin, and D. Wands, "Measuring the duration of inflation with the curvaton," *Physical Review D: Particles, Fields, Gravitation and Cosmology*, vol. 98, Article ID 063525, 2018.
- [41] M. Anacleto, F. A. Brito, and E. Passos, "Analogue aharonov-bohm effect in a lorentz-violating background," *Physical Review D*, vol. 86, Article ID 125015, 2012.
- [42] R. A. Correa, R. da Rocha, and A. de Souza Dutra, "Entropic information for travelling solitons in Lorentz and CPT breaking systems," *Annals of Physics*, vol. 359, pp. 198–212, 2015.
- [43] R. A. C. Correa and A. de Souza Dutra, "Coupled scalar fields oscillons and breathers in some lorentz violating scenarios," *Advances in High Energy Physics*, vol. 2015, Article ID 673716, 17 pages, 2015.
- [44] R. Casana, J. Ferreira, and A. L. Mota, "Topological self-dual configurations in a Maxwell-Higgs model with a CPT-odd and Lorentz-violating nonminimal coupling," *Annals of Physics*, vol. 375, pp. 179–192, 2016.
- [45] L. L. Vitria, K. Bakke, and H. Belich, "On the effects of the Lorentz symmetry violation yielded by a tensor field on the interaction of a scalar particle and a Coulomb-type field," *Annals of Physics*, vol. 399, p. 117, 2018.
- [46] C. Nassif, R. F. Santos, and Amaro de Faria Jr., "Lorentz violation with an invariant minimum speed as foundation of the tachyonic inflation within a Machian scenario," *Physics of the Dark Universe*, vol. 22, p. 116, 2018.
- [47] Y. Peng, "Static scalar field condensation in regular asymptotically AdS reflecting star backgrounds," *Physics Letters B*, vol. 782, p. 717, 2018.
- [48] G. Jackson and M. Laine, "Hydrodynamic fluctuations from a weakly coupled scalar field," *The European Physical Journal C*, vol. 78, p. 304, 2018.
- [49] S. Antusch, F. Cefalà, and S. Orani, "Gravitational waves from oscillons after inflation," *Physical Review Letters*, vol. 118, Article ID 011303, 2017.
- [50] A. A. Mustafa, J. Braden, E. J. Copeland et al., "Gravitational waves from asymmetric oscillon dynamics?" *Physical Review D*, vol. 98, Article ID 024040, 2018.

- [51] G. Hinshaw, D. Larson, and E. Komatsu, "Nine-year Wilkinson microwave anisotropy probe (WMAP) observations: cosmological parameter results," *The Astrophysical Journal Supplement Series*, vol. 208, no. 2, p. 19, 2013.
- [52] B. Ryden, *Introduction to Cosmology*, Addison Wesley, USA, 2003.
- [53] P. G. Ferreira and M. Joyce, "Cosmology with a primordial scaling field," *Physical Review D: Particles, Fields, Gravitation and Cosmology*, vol. 58, no. 2, Article ID 023503, 1998.
- [54] A. H. Guth, "Inflationary universe: a possible solution to the horizon and flatness problems," *Physical Review D: Particles, Fields, Gravitation and Cosmology*, vol. 23, no. 2, pp. 347–356, 1981.
- [55] S. K. Modak and D. Singleton, "Consequences of a stochastic approach to the conformal invariance of inflationary correlators," *Physical Review D*, vol. 86, Article ID 123514, 2012.
- [56] K. Kamada, "Graceful exit from higgs G inflation," *Physical Review D*, vol. 88, Article ID 123518, 2013.
- [57] J. Lu et al., "Constraints on accelerating universe using ESSENCE and gold supernovae data combined with other cosmological probes," *The European Physical Journal C*, vol. 58, p. 311, 2008.
- [58] A. G. Riess, A. V. Filippenko, P. Challis et al., "Observational evidence from supernovae for an accelerating universe and a cosmological constant," *The Astronomical Journal*, vol. 116, p. 1009, 1998.
- [59] G. Perlmutter, S. Perlmutter, G. Aldering et al., "Measurements of omega and lambda from 42 high-redshift supernovae," *The Astrophysical Journal*, vol. 517, p. 565, 1999.
- [60] S. Weinberg, "The cosmological constant problem," *Reviews of Modern Physics*, vol. 61, no. 1, pp. 1–23, 1989.
- [61] T. Padmanabhan, "Cosmological constant—the weight of the vacuum," *Physics Reports*, vol. 380, no. 5-6, pp. 235–320, 2003.
- [62] E. W. Kolb, "Time variation of fundamental constants, primordial nucleosynthesis, and the size of extra dimensions," *Physical Review D*, vol. 33, p. 869, 1986.
- [63] N. Arkani-Hamed, S. Dimopoulos, and G. Dvali, "The hierarchy problem and new dimensions at a millimeter," *Physics Letters B*, vol. 429, no. 3-4, pp. 263–272, 1998.
- [64] P. C. Argyres, "Black holes and sub-millimeter dimensions," *Physics Letters B*, vol. 441, p. 96, 1998.



Hindawi

Submit your manuscripts at
www.hindawi.com

