

Characterization of mating type genes in *Aspergillus flavus* populations from two locations in Kenya

Ouko Abigael ^{1*}, Okoth Sheila¹, Amugune Nelson ¹, Vesa Joutsjoki²

¹School of Biological Sciences, University of Nairobi, P.O. Box 30197-00100, Nairobi, Kenya

²Natural Resources Institute Finland, FIN-31600, Jokioinen, Finland

Correspondence should be addressed to Ouko Abigael Atieno; abbykongete@gmail.com

Supplemental figures (Figure 2, 3,4 and 5)

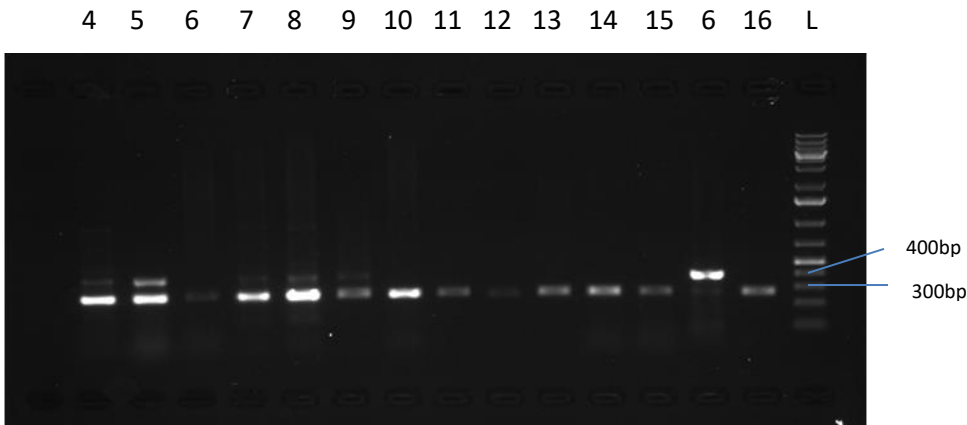


Figure 2: Mating types for *A. flavus* strains from Makueni and Nandi; 4-IVM 350G, L5-504820BMYG, L6-300566, L7-IVM 132G, L8-100957, L9-60756, L10-50400BM2YG, L11-2M1983g, L12-60572BM2Y, L13-60795BM8BJ, L14-60801BSIYG, L15-40013BM126, L6-300566, L16-IVM131LG, L-molecular weight marker.

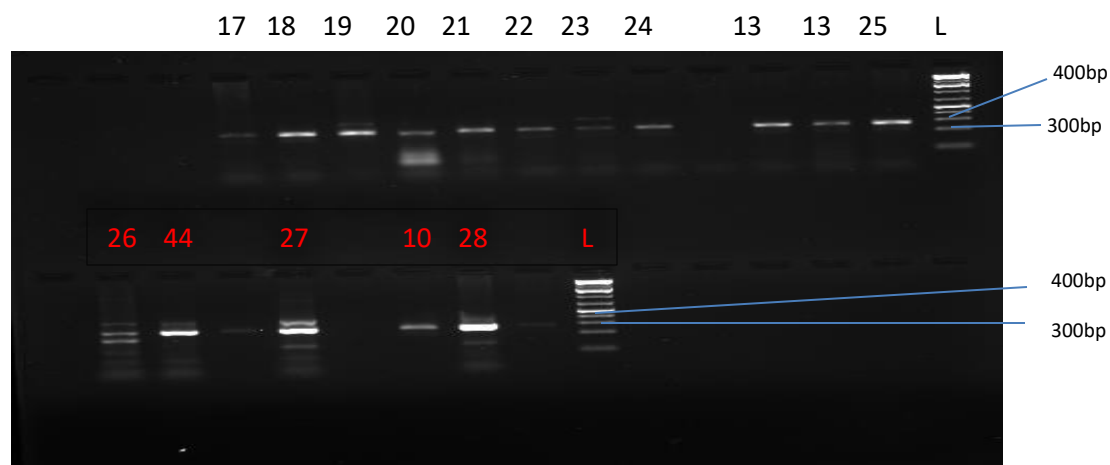


Figure 3: Mating types for *A. flavus* strains from Makueni and Nandi; Lane (L)17-3VM 566, L18-40025 BSIYG, L19-IVM 4018, L20-40245 BMIG, L21-2M1983DG, L22- 2VM882G, L23-50444, L24-50536 BMIYG, L25-2M2002LG, L26-40296BSY, L27- 40143BM112G, L28-2VM964, L-molecular weight marker.

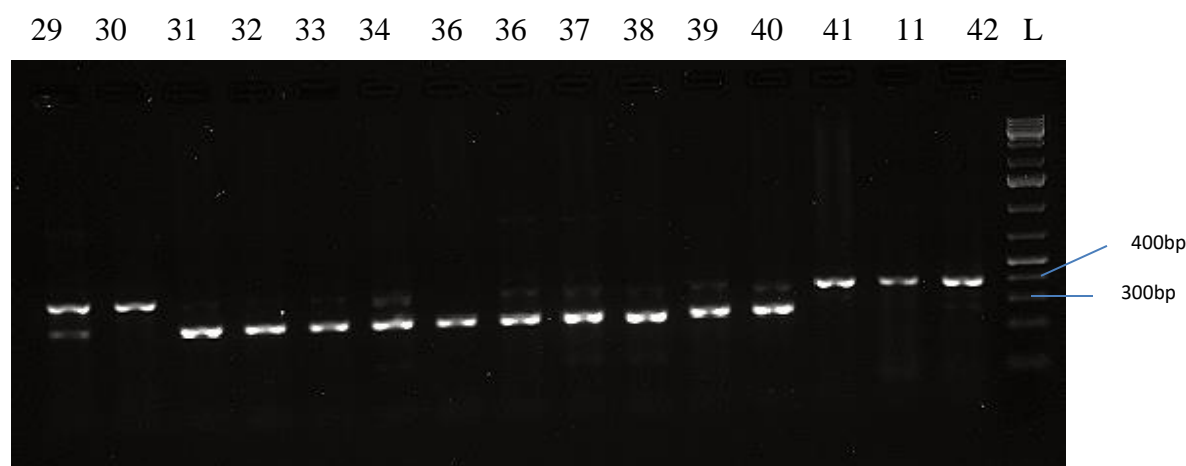


Figure 4: Mating types for *A. flavus* strains from Makueni and Nandi; Lane (L)29-40143 BM112G, L30-IVM 130LG, L31-3VM566G, L32-IVM 250WY, L33-40267 BSIYG, L34-IVM 414, L36-2M1002LG, L37-100079, L38-40224 BSIYG, L39-40041BM38Y6, L40-60690BMIYG, L41-IVM201122, L42-IVM 195, L-molecular weight marker

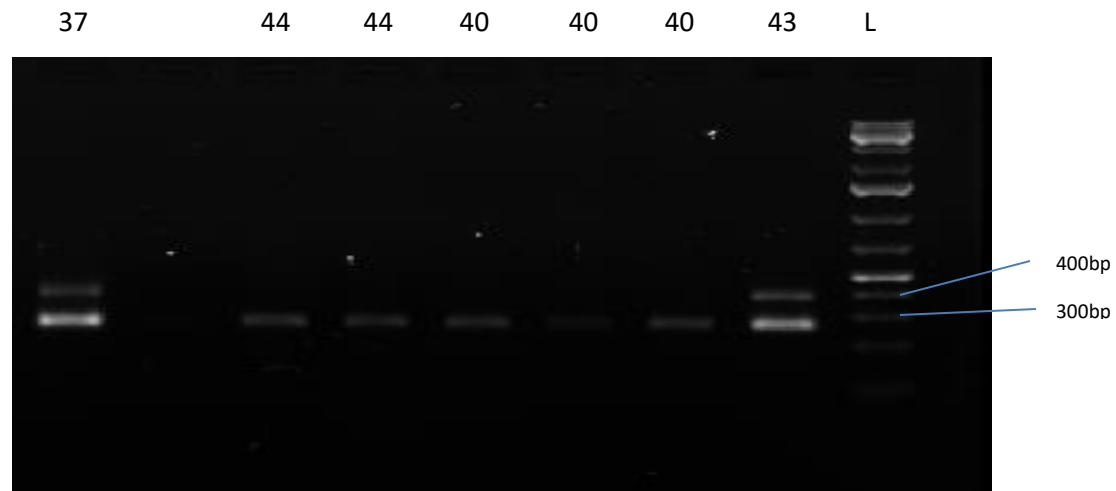


Figure 5: Figure 4: Mating types for *A. flavus* strains from Makueni and Nandi; Lane (L)

35-50444 BSIYG, L44-60661 BMIYG, L43-201204, L-molecular weight marker