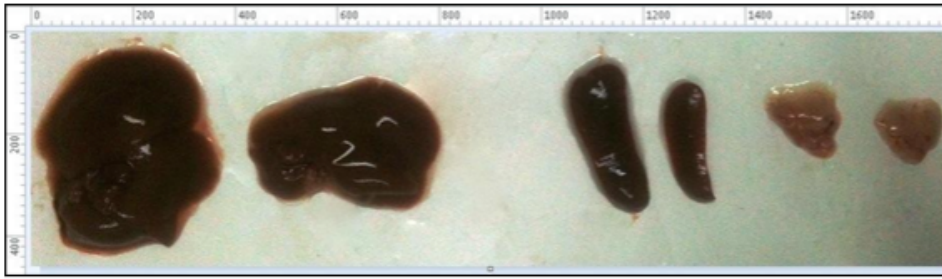
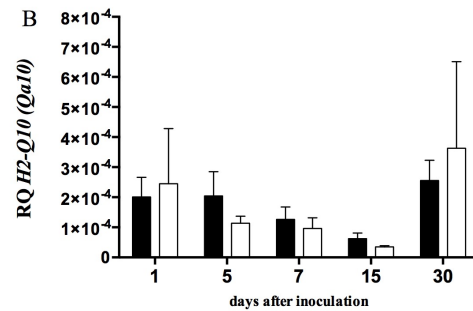
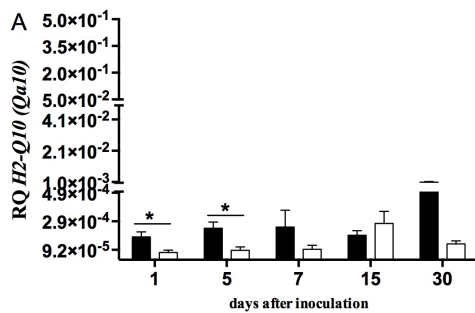


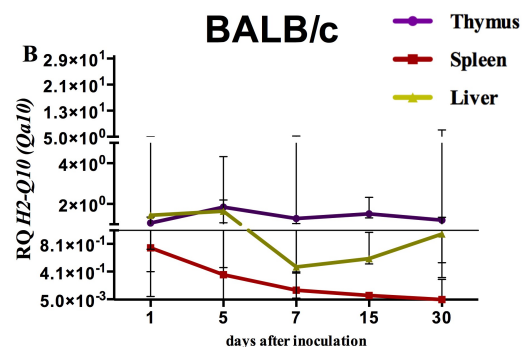
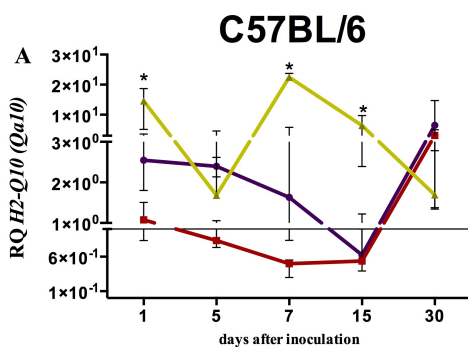
Supplemental Data



I: Visual inspection of Liver, Spleen and Thymus of BALB/c (Left) and C57BL/6 (right) 7 days after inoculation of 10,000 LD₅₀ of yellow fever virus (YFV17D). Representative of at least 5 independent samples.



II - Gene expression of *H2-Q10*(Qa10) in thymus of (A) C57BL/6 and (B) BALB/c mice inoculated with 10.000 LD₅₀ of YFV17D or PBS. RQ = Relative Quantification representative of geometric mean values of $2^{-\Delta\Delta C_t}$. Tissue samples were obtained in triplicate from different animals for each treatment. Each experiment was independently performed at least three times. Statistical analysis was performed using the non-parametric test Mann-Whitney two-tailed. Values close to the level of significance ($P < 0.05$) are marked with (*).



III - Transcriptional profiles of *H2-Q10Qa-10* in harvested tissues of (A) C56BL/6 and (B) BALB/c mice inoculated with 10.000 LD₅₀ of YFV17D. RQ = Relative Quantification representative of geometric mean values of $2^{-\Delta\Delta C_t}$. RQ values expressed as fold change relative to control group values (baseline = 1). Statistical analysis was performed using the non-parametric test Kruskal-Wallis Dunn's multiple comparison. Values close to the level of significance ($P < 0.05$) are marked with (*).