

Research Article

Classification of All Single Traveling Wave Solutions of Fractional Coupled Boussinesq Equations via the Complete Discrimination System Method

Tianyong Han ^{1,2} and Zhao Li ^{1,2}

¹College of Computer Science, Chengdu University, Chengdu 610106, China

²Key Laboratory of Pattern Recognition and Intelligent Information Processing, Institutions of Higher Education of Sichuan Province, Chengdu University, 610106, China

Correspondence should be addressed to Zhao Li; lizhao10.26@163.com

Received 19 August 2021; Revised 20 November 2021; Accepted 8 December 2021; Published 22 December 2021

Academic Editor: Zine El Abidine Fellah

Copyright © 2021 Tianyong Han and Zhao Li. This is an open access article distributed under the Creative Commons Attribution License, which permits unrestricted use, distribution, and reproduction in any medium, provided the original work is properly cited.

In this paper, the complete discrimination system method is used to construct the exact traveling wave solutions for fractional coupled Boussinesq equations in the sense of conformable fractional derivatives. As a result, we get the exact traveling wave solutions of fractional coupled Boussinesq equations, which include rational function solutions, Jacobian elliptic function solutions, implicit solutions, hyperbolic function solutions, and trigonometric function solutions. Finally, the obtained solution is compared with the existing literature.

1. Introduction

The coupled system is composed of two or more differential equations (include ordinary differential equations, partial differential equations fractional partial differential equations, and stochastic partial differential equations) [1–3]. It is a very important class of mathematical and physical equations. In recent years, coupled systems have been widely studied by scholars because they come from physics, chemistry, communication, and engineering [4–8]. Among them, constructing the exact traveling wave solution of this kind of coupled system is a very important topic. Many meaningful methods have been proposed to solve the exact solutions of coupled systems, including Lie symmetry analysis [9], the method of dynamical systems [10, 11], Fan subequation method [12], generalized Jacobi elliptic function expansion method [13], extended modified auxiliary equation mapping method [14], and extended modified auxiliary equation mapping method [15].

The fractional coupled Boussinesq equations [16, 17] are a very important coupled system, which is usually

used to simulate nonlinear shallow water surface wave phenomena.

$$\begin{cases} D_t^\alpha u(t, x) + D_x^\beta v(t, x) = 0, \\ D_t^\alpha v(t, x) + aD_x^\beta(u^2(t, x)) - bD_{xxx}^\beta u(t, x) = 0, \end{cases} \quad 0 < \alpha, \beta \leq 1, b \neq 0. \quad (1)$$

In [16], Muhannad et al. constructed the traveling wave solutions of fractional coupled Boussinesq equations by using the modified extended Tanh method. In [17], Khatun et al. obtained some explicit solutions of fractional coupled Boussinesq equations by the double $(G'/G, 1/G)$ expansion method. The work of references [16, 17] is based on the Jumarie's modified Riemann-Liouville derivative to study fractional coupled Boussinesq equations. Unfortunately, many literatures [18–20] have reported that the Jumarie's modified Riemann-Liouville derivative do not satisfy the chain rule and Leibniz formula. Therefore, it is urgent to find a new fractional derivative that can not only satisfy the chain rule but also obey Leibniz formula. In [21], Khalil

et al. gave the definition and properties of the fractional derivative named conformable fractional derivative, which satisfy the above two conditions. The main purpose of this paper is to attain the exact traveling wave solutions of fractional coupled Boussinesq equations in the sense of conformable fractional derivative by using the complete discrimination system method [22–24].

Next, we review the definition of conformable fractional derivatives.

Definition 1. Let $f : [0, \infty) \rightarrow R$. Then, the conformable fractional derivative of f of order α is defined as

$$D_t^\alpha f(t) = \lim_{\varepsilon \rightarrow 0} \frac{f(t + \varepsilon t^{1-\alpha}) - f(t)}{\varepsilon}, \forall t \in [0, +\infty), \alpha \in (0, 1]. \tag{2}$$

The function f is α -conformable differentiable at a point t if the limit in Equation (2) exists.

Theorem 2. Assume that $f, g : (0, \infty) \rightarrow R$ be differentiable and also α differentiable functions, then chain rule holds

$$D_t^\alpha (f \circ g)(t) = t^{1-\alpha} g(t)^{\alpha-1} g'(t) D_t^\alpha (f(t)) \Big|_{t=g(t)}. \tag{3}$$

The structure of this paper is as follows. In Section 2, we simplify Equation (1) to nonlinear ordinary differential equations by fractional traveling wave transformation. Then, the complete discrimination system is used to construct the classification of all single traveling wave solutions of fractional coupled Boussinesq equations. In Section 3, we give a summary.

2. Exact Solutions of System (1)

Now, we introduce the transformation

$$\xi = \frac{x^\beta}{\beta} - c \frac{t^\alpha}{\alpha}, \tag{4}$$

where c is constant.

Substituting (4) into Equation (1) and integrating it with respect to ξ , we obtain

$$\begin{cases} c_1 - cu + v = 0, \\ c_2 - cv + au^2 - bu'' = 0, \end{cases} \tag{5}$$

where c_1 and c_2 are integral constants.

From the first equation of Equation (5), we have

$$v = cu - c_1. \tag{6}$$

Substituting (6) into the second equation of Equation (5), we obtain

$$c_2 + c_1 c - c^2 u + au^2 - bu'' = 0. \tag{7}$$

Multiplying Equation (8) by u' and integrating it with respect to ξ , we obtain

$$(u')^2 = \frac{2a}{3b} u^3 - \frac{c^2}{b} u^2 + \frac{2c_2 + 2c_1 c}{b} u + 2c_3, \tag{8}$$

where c_3 is the integral constant.

Suppose $\phi = (2a/3b)^{1/3} u$, $b_2 = -(c^2/b)(2a/3b)^{-2/3}$, $b_1 = (2c_2 + 2c_1 c/b)(2a/3b)^{-1/3}$, and $b_0 = 2c_3$. Hence, Equation (8) can be changed to

$$(\phi')^2 = \phi^3 + b_2 \phi^2 + b_1 \phi + b_0. \tag{9}$$

Assume that $f(\phi) = \phi^3 + b_2 \phi^2 + b_1 \phi + b_0$, $\Delta = -27(2b_2^3/27 + b_0 - b_0 b_1/3)^2 - 4(b_1 - b_2^2/3)^3$, and $D_1 = b_1 - b_2^2/3$. Then, Equation (9) can be written in the following integral form:

$$\pm \left(\frac{2a}{3b}\right)^{1/3} (\xi - \xi_0) = \int \frac{d\phi}{\sqrt{\phi^3 + b_2 \phi^2 + b_1 \phi + b_0}}, \tag{10}$$

where ξ_0 is the integration constant. Then, we will obtain the classification of all solutions of Equation (10).

Case 1. If $\Delta = 0$ and $D_1 < 0$, then $f(\phi) = 0$ has a double real root and a single real root. Denote $F(\phi) = (\phi - \gamma_1)^2(\phi - \gamma_2)$, where $\gamma_1 \neq \gamma_2$. When $\phi > \gamma_2$, we have

$$\begin{aligned} \xi - \xi_0 &= \int \frac{d\phi}{(\phi - \gamma_1)^2(\phi - \gamma_2)} \\ &= \begin{cases} \frac{1}{\sqrt{\gamma_1 - \gamma_2}} \ln \left| \frac{\sqrt{\phi - \gamma_2} - \sqrt{\gamma_1 - \gamma_2}}{\sqrt{\phi - \gamma_2} + \sqrt{\gamma_1 - \gamma_2}} \right|, & \gamma_1 > \gamma_2, \\ \frac{2}{\sqrt{\gamma_2 - \gamma_1}} \arctan \sqrt{\frac{\phi - \gamma_2}{\gamma_2 - \gamma_1}}, & \gamma_1 < \gamma_2. \end{cases} \end{aligned} \tag{11}$$

Then, the solution of Equation (8) is

$$u_1(t, x) = \left(\frac{2a}{3b}\right)^{-1/3} \left\{ (\gamma_1 - \gamma_2) \tanh^2 \cdot \left[\frac{\sqrt{\gamma_1 - \gamma_2}}{2} \left(\frac{2a}{3b}\right)^{1/3} \left(\frac{x^\beta}{\beta} - c \frac{t^\alpha}{\alpha} - \xi_0\right) \right] + \gamma_2 \right\}, \gamma_1 > \gamma_2,$$

$$u_2(t, x) = \left(\frac{2a}{3b}\right)^{-1/3} \left\{ (\gamma_1 - \gamma_2) \coth^2 \cdot \left[\frac{\sqrt{\gamma_1 - \gamma_2}}{2} \left(\frac{2a}{3b}\right)^{1/3} \left(\frac{x^\beta}{\beta} - c \frac{t^\alpha}{\alpha} - \xi_0\right) \right] + \gamma_2 \right\}, \gamma_1 > \gamma_2,$$

$$u_3(t, x) = \left(\frac{2a}{3b}\right)^{-1/3} \left\{ (-\gamma_1 + \gamma_2) \tan^2 \cdot \left[\frac{\sqrt{-\gamma_1 + \gamma_2}}{2} \left(\frac{2a}{3b}\right)^{1/3} \left(\frac{x^\beta}{\beta} - c\frac{t^\alpha}{\alpha} - \xi_0\right) \right] + \gamma_2 \right\}, \gamma_1 < \gamma_2. \tag{12}$$

Remark 3. When $a = 3, b = 1, c = \sqrt{5}, \beta = 1/3, c_1 = \sqrt{5}, c_2 = 3, c_3 = -2,$ and $\xi_0 = 0,$ three-dimensional diagram and two-dimensional diagram of the solution $u_1(t, x)$ of Equation (1) are drawn in Figure 1, respectively.

Case 2. If $\Delta = 0$ and $D_1 = 0,$ then $f(\phi) = 0$ has a triple real root. Denoting $F(\phi) = (\phi - \gamma)^3,$ then we have

$$u_4(t, x, z) = 4 \left(\frac{2a}{3b}\right)^{-2/3} \left(\frac{x^\beta}{\beta} - c\frac{t^\alpha}{\alpha} - \xi_0\right)^{-2} + \gamma. \tag{13}$$

Case 3. If $\Delta > 0$ and $D_1 < 0,$ then $f(v) = 0$ has three different real roots, $\gamma_1, \gamma_2,$ and $\gamma_3,$ and $\gamma_1 < \gamma_2 < \gamma_3.$

If $\gamma_1 < \phi < \gamma_3,$ taking the transformation $\phi = \gamma_1 + (\gamma_2 - \gamma_1) \sin^2 \zeta,$ then we obtain

$$\begin{aligned} \pm(\xi - \xi_0) &= \int \frac{d\phi}{\sqrt{f(\phi)}} \\ &= \int \frac{2(\gamma_2 - \gamma_1) \sin \zeta \cos \zeta d\zeta}{\sqrt{\gamma_3 - \gamma_1} (\gamma_2 - \gamma_1) \sin \zeta \cos \zeta \sqrt{1 - m^2 \sin^2 \zeta}} \\ &= \frac{2}{\sqrt{\gamma_3 - \gamma_1}} \int \frac{d\zeta}{\sqrt{1 - m^2 \sin^2 \zeta}}, \end{aligned} \tag{14}$$

where $m^2 = \gamma_2 - \gamma_1 / \gamma_3 - \gamma_1.$

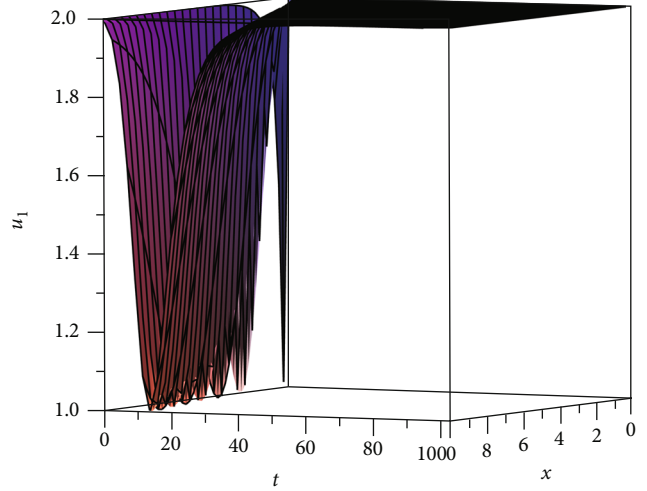
From the definition of Jacobi function and (14), we have

$$\phi = \gamma_1 + (\gamma_2 - \gamma_1) \text{sn}^2 \left(\frac{\sqrt{\gamma_3 - \gamma_1}}{2} (\xi - \xi_0), m \right). \tag{15}$$

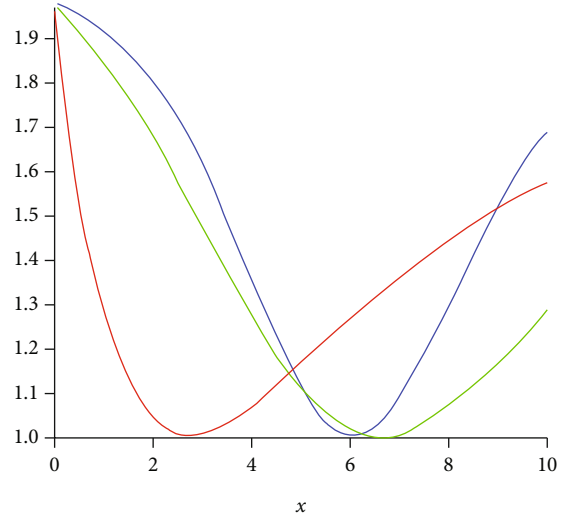
Then, the solution of the corresponding Equation (8) is

$$u_5(t, x) = \left(\frac{2a}{3b}\right)^{-1/3} \left[\gamma_1 + (\gamma_2 - \gamma_1) \text{sn}^2 \left(\frac{\sqrt{\gamma_3 - \gamma_1}}{2} \left(\frac{2a}{3b}\right)^{1/3} \left(\frac{x^\beta}{\beta} - c\frac{t^\alpha}{\alpha} - \xi_0\right), m \right) \right]. \tag{16}$$

$$u_6(t, x) = \left(\frac{2a}{3b}\right)^{-1/3} \left[\frac{\gamma_3 - \gamma_2 \text{sn}^2 \left(\frac{\sqrt{\gamma_3 - \gamma_1}}{2} (2a/3b)^{1/3} (x^\beta/\beta - c(t^\alpha/\alpha) - \xi_0), m \right)}{cn^2 \left(\frac{\sqrt{\gamma_3 - \gamma_1}}{2} (2a/3b)^{1/3} (x^\beta/\beta - c(t^\alpha/\alpha) - \xi_0), m \right)} \right]. \tag{17}$$



(a) Perspective view of the wave



— $\beta = \frac{1}{4}$
 — $\beta = \frac{1}{2}$
 — $\beta = \frac{3}{4}$

(b) The wave along x

FIGURE 1: The solution $u_1(t, x)$ at $a = 3, b = 1, c = \sqrt{5}, \beta = 1/3, c_1 = \sqrt{5}, c_2 = 3, c_3 = -2,$ and $\xi_0 = 0.$

If $\phi > \gamma_3,$ take the transformation $\phi = -\gamma_2 \sin^2 \zeta + \gamma_3 / \cos^2 \zeta.$ Similarly, the solution of the corresponding Equation (8) is

where $m^2 = \gamma_2 - \gamma_1/\gamma_3 - \gamma_1$.

Case 4. If $\Delta < 0$, then $f(\phi) = 0$ has only real root. Denote $F(\phi) = (\phi - \gamma)(\phi^2 + p\phi + q)$, where $p^2 - 4q < 0$.

If $\phi > \gamma$, taking the transformation $\phi = \gamma + \sqrt{\gamma^2 + p\gamma + q} \tan^2 \zeta/2$, then we obtain

$$\begin{aligned} \xi - \xi_0 &= \int \frac{d\phi}{\sqrt{(\phi - \gamma)(\phi^2 + p\phi + q)}} \\ &= \int \frac{\sqrt{\gamma^2 + p\gamma + q} \tan \zeta/2 / \cos^2 \zeta/2 d\zeta}{(\gamma^2 + p\gamma + q)^{3/4} \tan \zeta/2 / \cos^2 \zeta/2 \sqrt{1 - m^2 \sin^2 \zeta}} \\ &= \frac{1}{(\gamma^2 + p\gamma + q)^{1/4}} \int \frac{d\zeta}{\sqrt{1 - m^2 \sin^2 \zeta}}, \end{aligned} \tag{18}$$

where $m^2 = 1/2(1 - \gamma + p/2/\sqrt{\gamma^2 + p\gamma + q})$.

From the definition of Jacobi function and (18), we have $cn((\gamma^2 + p\gamma + q)^{1/4}(\xi - \xi_0), m) = \cos \zeta$.

$$\cos \zeta = \frac{2\sqrt{\gamma^2 + p\gamma + q}}{\phi - \gamma + \sqrt{\gamma^2 + p\gamma + q}} - 1. \tag{19}$$

Then, if $\phi > \gamma$, the solution of the corresponding Equation (8) is

$$\begin{aligned} \phi_7(\xi) &= \gamma + \frac{2\sqrt{\gamma^2 + p\gamma + q}}{1 + cn((\gamma^2 + p\gamma + q)^{1/4}(\xi - \xi_0), m)} \\ &\quad - \sqrt{\gamma^2 + p\gamma + q}. \end{aligned} \tag{20}$$

Similarly, the solution of the corresponding Equation (8) is

$$u_7(t, x) = \left(\frac{2a}{3b}\right)^{-1/3} \left[\gamma + \frac{2\sqrt{\gamma^2 + p\gamma + q}}{1 + cn((\gamma^2 + p\gamma + q)^{1/4}(2a/3b)^{-1/3}(x^\beta/\beta - c(t^\alpha/\alpha) - \xi_0), m)} - \sqrt{\gamma^2 + p\gamma + q} \right]. \tag{21}$$

$$v_1(t, x) = \left(\frac{2a}{3b}\right)^{-1/3} \left\{ (\gamma_1 - \gamma_2) \tanh^2 \left[\frac{\sqrt{\gamma_1 - \gamma_2}}{2} \left(\frac{2a}{3b}\right)^{1/3} \left(\frac{x^\beta}{\beta} - c\frac{t^\alpha}{\alpha} - \xi_0\right) \right] + \gamma_2 \right\} + c_1, \gamma_1 > \gamma_2,$$

$$v_2(t, x) = \left(\frac{2a}{3b}\right)^{-1/3} \left\{ (\gamma_1 - \gamma_2) \coth^2 \left[\frac{\sqrt{\gamma_1 - \gamma_2}}{2} \left(\frac{2a}{3b}\right)^{1/3} \left(\frac{x^\beta}{\beta} - c\frac{t^\alpha}{\alpha} - \xi_0\right) \right] + \gamma_2 \right\} + c_1, \gamma_1 > \gamma_2,$$

$$v_3(t, x) = \left(\frac{2a}{3b}\right)^{-1/3} \left\{ (-\gamma_1 + \gamma_2) \tan^2 \left[\frac{\sqrt{-\gamma_1 + \gamma_2}}{2} \left(\frac{2a}{3b}\right)^{1/3} \left(\frac{x^\beta}{\beta} - c\frac{t^\alpha}{\alpha} - \xi_0\right) \right] + \gamma_2 \right\} + c_1, \gamma_1 < \gamma_2,$$

$$v_4(t, x, z) = 4c \left(\frac{2a}{3b}\right)^{-2/3} \left(\frac{x^\beta}{\beta} - c\frac{t^\alpha}{\alpha} - \xi_0\right)^{-2} + c\gamma + c_1, \tag{22}$$

$$v_5(t, x) = \left(\frac{2a}{3b}\right)^{-1/3} \left[\gamma_1 + (\gamma_2 - \gamma_1) \operatorname{sn}^2 \left(\frac{\sqrt{\gamma_3 - \gamma_1}}{2} \left(\frac{2a}{3b}\right)^{1/3} \left(\frac{x^\beta}{\beta} - c\frac{t^\alpha}{\alpha} - \xi_0\right), m \right) \right] + c_1,$$

$$v_6(t, x) = \left(\frac{2a}{3b}\right)^{-1/3} \left[\frac{\gamma_3 - \gamma_2 \operatorname{sn}^2 \left(\sqrt{\gamma_3 - \gamma_1}/2(2a/3b)^{1/3} (x^\beta/\beta - c(t^\alpha/\alpha) - \xi_0), m \right)}{cn^2 \left(\sqrt{\gamma_3 - \gamma_1}/2(2a/3b)^{1/3} (x^\beta/\beta - c(t^\alpha/\alpha) - \xi_0), m \right)} \right] + c_1,$$

$$v_7(t, x) = \left(\frac{2a}{3b}\right)^{-1/3} \left[\gamma + \frac{2\sqrt{\gamma^2 + p\gamma + q}}{1 + cn((\gamma^2 + p\gamma + q)^{1/4}(2a/3b)^{-1/3}(x^\beta/\beta - c(t^\alpha/\alpha) - \xi_0), m)} - \sqrt{\gamma^2 + p\gamma + q} \right] + c_1.$$

Remark 4. In the time-space fractional coupled Boussinesq equations, the unknown functions u and v satisfy the relationship $v = cu - c_1$. In the paper, the traveling wave solu-

tions of Equation (1) have been obtained by the complete discrimination system method, and we can easily obtain the solutions of v of Equation (1) by using (6).

Remark 5. The solutions obtained in references [16, 17] mainly focus on hyperbolic function solutions and trigonometric function solutions. However, in this paper, not only the trigonometric function solution and hyperbolic function solution but also the Jacobian function solution and implicit function solution are obtained. Therefore, a new solution is obtained in this paper.

3. Conclusion

The fractional coupled Boussinesq equations, which are usually used to simulate nonlinear shallow water surface wave phenomena, are studied by the complete discrimination system method. A series of new exact solutions are obtained, including rational function solutions, Jacobian elliptic function solutions, implicit solutions, hyperbolic function solutions, and trigonometric function solutions. Compared with the existing literature [16, 17], the implicit function solutions and Jacobian function solutions obtained in the paper are new solutions. Moreover, the complete discrimination system method can also be used to find the exact traveling wave solutions of other coupled systems. In future research work, we will focus on the exact traveling wave solution of more complex coupled systems.

Data Availability

No data were used to support this study.

Conflicts of Interest

The authors declare that they have no conflicts of interest.

Acknowledgments

This work was supported by the Institutions of Higher Education of Sichuan Province under grant No. MSSB-2021-13.

References

- [1] J. Kaur, R. K. Gupta, and S. Kumar, "On explicit exact solutions and conservation laws for time fractional variable - coefficient coupled Burger's equations," *Communications in Nonlinear Science and Numerical Simulation*, vol. 83, article 105108, 2020.
- [2] W. W. Mohammed, N. Iqbal, A. Ali, and M. el-Morshedy, "Exact solutions of the stochastic new coupled Konno-Oono equation," *Results in Physics*, vol. 21, article 103830, 2021.
- [3] X. Minhui and M. Jia, "Exact solutions, symmetry reductions, Painlevé test and Bäcklund transformations of a coupled KdV equation," *Communications in Theoretical Physics*, vol. 68, no. 4, pp. 417–424, 2017.
- [4] W. W. Mohammed, R. Qahiti, H. Ahmad, J. Baili, F. E. Mansour, and M. el-Morshedy, "Exact solutions for the system of stochastic equations for the ion sound and Langmuir waves," *Results in Physics*, vol. 30, article 104841, 2021.
- [5] W. W. Mohammed, H. Ahmad, H. Boulares, F. Khelifi, and M. El-Morshedy, "Exact solutions of Hirota-Maccari system forced by multiplicative noise in the Itô sense," *Journal of Low Frequency Noise Vibration and Active Control*, vol. 40, pp. 1–11, 2021.
- [6] W. W. Mohammed and M. El-Morshedy, "The influence of multiplicative noise on the stochastic exact solutions of the Nizhnik-Novikov-Veselov system," *Mathematics and Computers in Simulation*, vol. 190, pp. 192–202, 2021.
- [7] X. Zhu, "A coupled (2+1)-dimensional mKdV system and its nonlocal reductions," *Communications in Nonlinear Science and Numerical Simulation*, vol. 91, article 105438, 2020.
- [8] S. Saha Ray, "New double periodic exact solutions of the coupled Schrodinger-Boussinesq equations describing physical processes in laser and plasma physics," *Chinese Journal of Physics*, vol. 55, no. 5, pp. 2039–2047, 2017.
- [9] S. Elahieh Saberi and R. Hejazi, "Lie symmetry analysis, conservation laws and exact solutions of the time- fractional generalized Hirota-Satsuma coupled KdV system," *Physica A*, vol. 492, no. 15, pp. 296–307, 2018.
- [10] X. Deng, "Exact solitary and periodic wave solutions for the coupled Schrodinger- Boussinesq equation," *Optik*, vol. 136, pp. 312–318, 2017.
- [11] T. Han, Z. Li, and X. Zhang, "Bifurcation and new exact traveling wave solutions to time-space coupled fractional nonlinear Schrodinger equation," *Physics Letters A*, vol. 395, article 127217, 2021.
- [12] D. Feng and K. Li, "Exact traveling wave solutions for a generalized Hirota-Satsuma coupled KdV equation by Fan sub-equation method," *Physics Letters A*, vol. 375, no. 23, pp. 2201–2210, 2011.
- [13] B. Hong, "New exact Jacobi elliptic functions solutions for the generalized coupled Hirota-Satsuma KdV system," *Applied Mathematics and Computation*, vol. 217, no. 2, pp. 472–479, 2010.
- [14] N. Cheemaa, S. Chen, and A. R. Seadawy, "Propagation of isolated waves of coupled nonlinear (2 + 1)-dimensional Maccari System in plasma physics," *Results in Physics*, vol. 17, article 107987, p. 102987, 2020.
- [15] A. R. Seadawy, N. Cheemaa, and A. Biswas, "Optical dromions and domain walls in (2+1)-dimensional coupled system," *Optik*, vol. 227, article 165669, 2021.
- [16] M. A. Shallal, H. N. Jabbar, and K. K. Ali, "Analytic solution for the space-time fractional Klein-Gordon and coupled conformable Boussinesq equations," *Results in Physics*, vol. 8, pp. 372–378, 2018.
- [17] M. A. Khatun, M. A. Arefin, M. H. Uddin, D. Baleanu, M. A. Akbar, and M. Inc, "Explicit wave phenomena to the couple type fractional order nonlinear evolution equations," *Results in Physics*, vol. 28, article 104597, 2021.
- [18] W. Chun and W. Rui, "Method of separation variables combined with homogenous balanced principle for searching exact solutions of nonlinear time-fractional biological pupulation model," *Communications in Nonlinear Science and Numerical Simulation*, vol. 63, pp. 88–100, 2018.
- [19] W. Rui, "Applications of homogenous balanced principle on investigating exact solutions to a series of time fractional nonlinear PDEs," *Communications in Nonlinear Science and Numerical Simulation*, vol. 47, pp. 253–266, 2017.
- [20] W. Rui and H. Zhang, "Separation variable method combined with integral bifurcation method for solving time-fractional reaction-diffusion models," *Computational and Applied Mathematics*, vol. 39, no. 4, article 299, 2020.
- [21] R. Khalil, M. Al Horani, A. Yousef, and M. Sababheh, "A new definition of fractional derivative," *Journal of Computational and Applied Mathematics*, vol. 264, pp. 65–70, 2014.

- [22] Y. Xie, L. Li, and Y. Kang, “New solitons and conditional stability to the high dispersive nonlinear Schrödinger equation with parabolic law nonlinearity,” *Nonlinear Dynamics*, vol. 103, no. 1, pp. 1011–1021, 2021.
- [23] L. Li, Z. Yang, and Y. Xie, “New exact solutions for a generalized KdV equation,” *Nonlinear Dynamics*, vol. 92, no. 2, pp. 215–219, 2018.
- [24] Y. Xie, Z. Yang, and L. Li, “New exact solutions to the high dispersive cubic-quintic nonlinear Schrodinger equation,” *Physics Letters A*, vol. 382, no. 36, pp. 2506–2514, 2018.