

Supplementary information

The controlled synthesis of carbon tubes and rods by template-assisted twin polymerization

Falko Böttger-Hiller, Patrick Kempe, Gisela Baumann, Michael Hietschold, Philipp Schäfer, Dietrich R. T. Zahn, Albrecht Petzold, Thomas Thurn-Albrecht, Stefan Spange

Index

Figure SI 1	Raman-spectra of synthesized carbon.	SI 1
Figure SI 2	Representative XRPD of synthesized carbon.	SI 1
Figure SI 3	Photographs and SEM images of glass fibre and coated glass fibre	SI 1
Figure SI 4	EDX analysis of pure glass fibre.	SI 2
Figure SI 5	SEM images of carbon tubes synthesized by TP on glass fibre.	SI 2

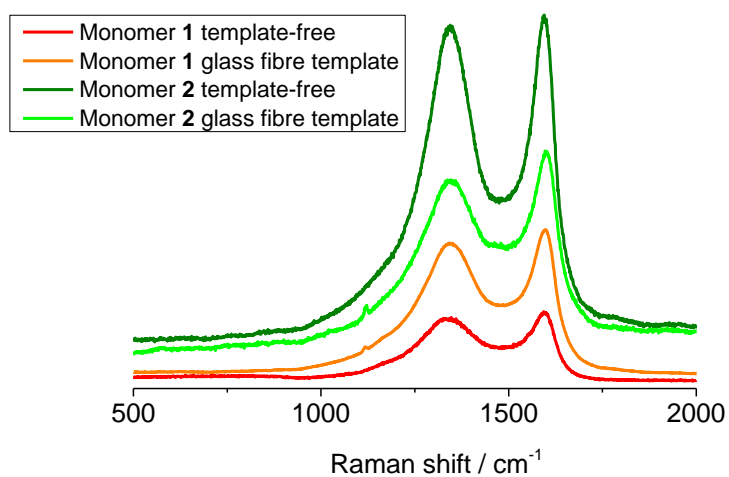


Figure SI 1. Raman-spectra of synthesized carbon.

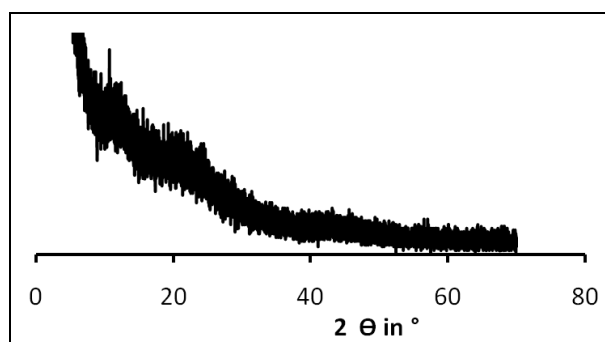


Figure SI 2. Representative XRPD of synthesized carbon.

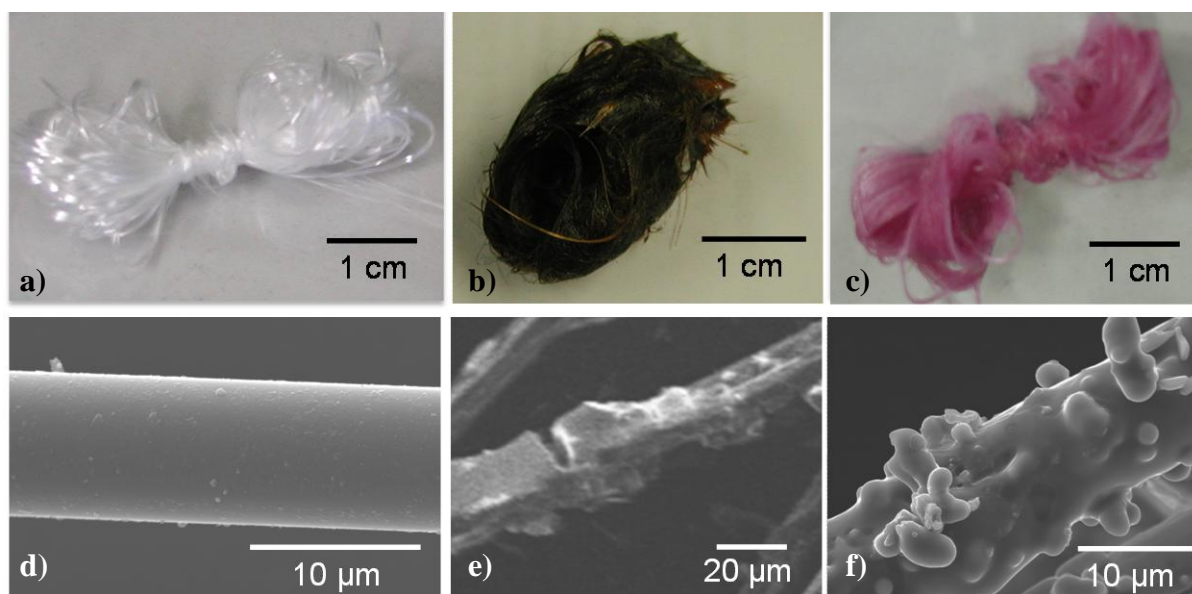


Figure SI 3. Photographs (a–c) and SEM images (d–f) of glass fibre (a, d) and coated glass fibre by thermal induction (b, e) and acidic catalysis (c, f).

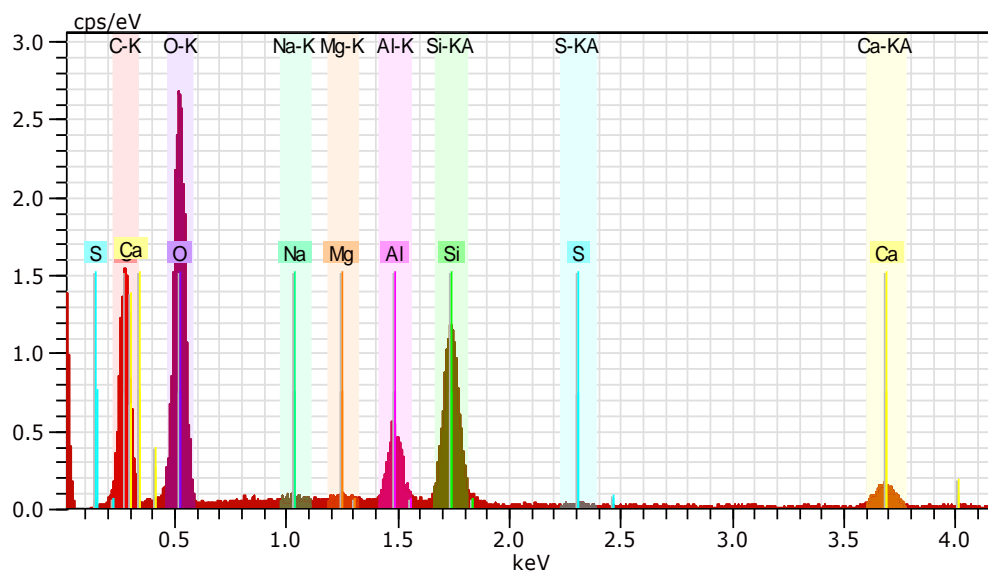


Figure SI 4. EDX analysis of pure glass fibre.

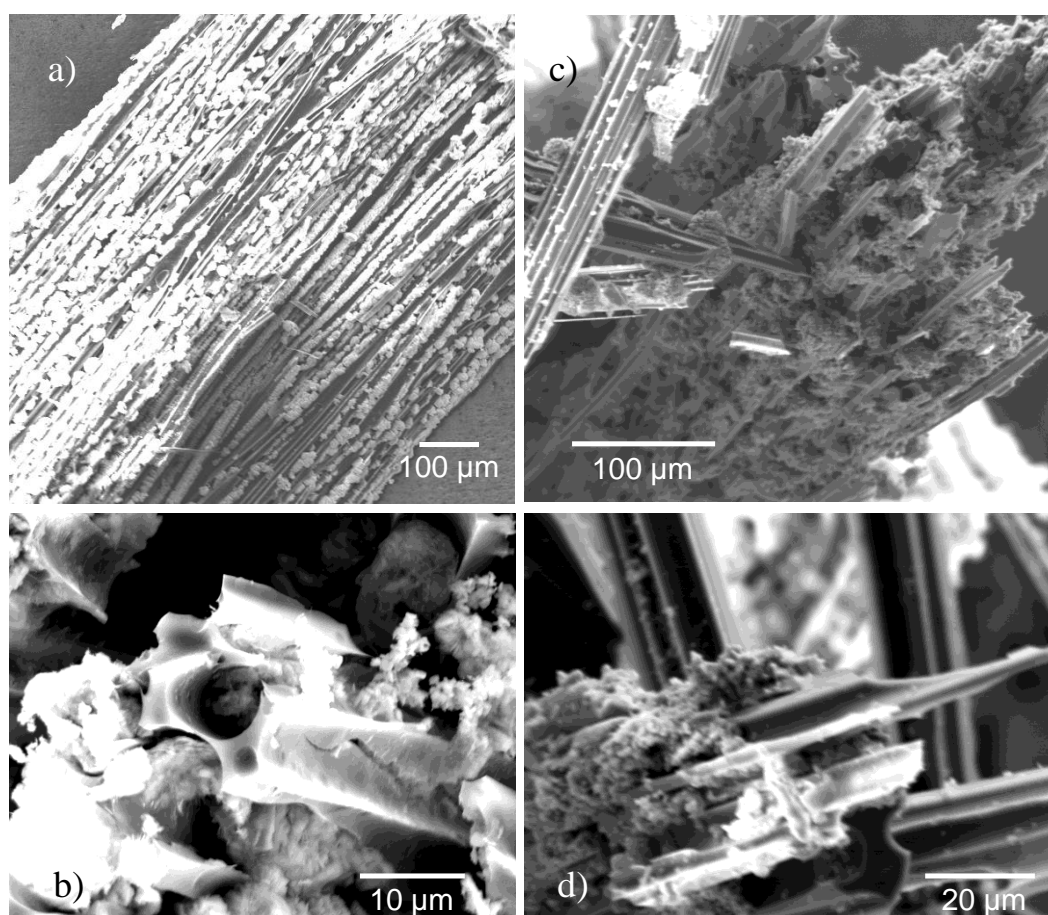


Figure SI 5. SEM images of carbon tubes synthesized by TP of 1 (a, b) and 2 (c, d) on glass fibre.