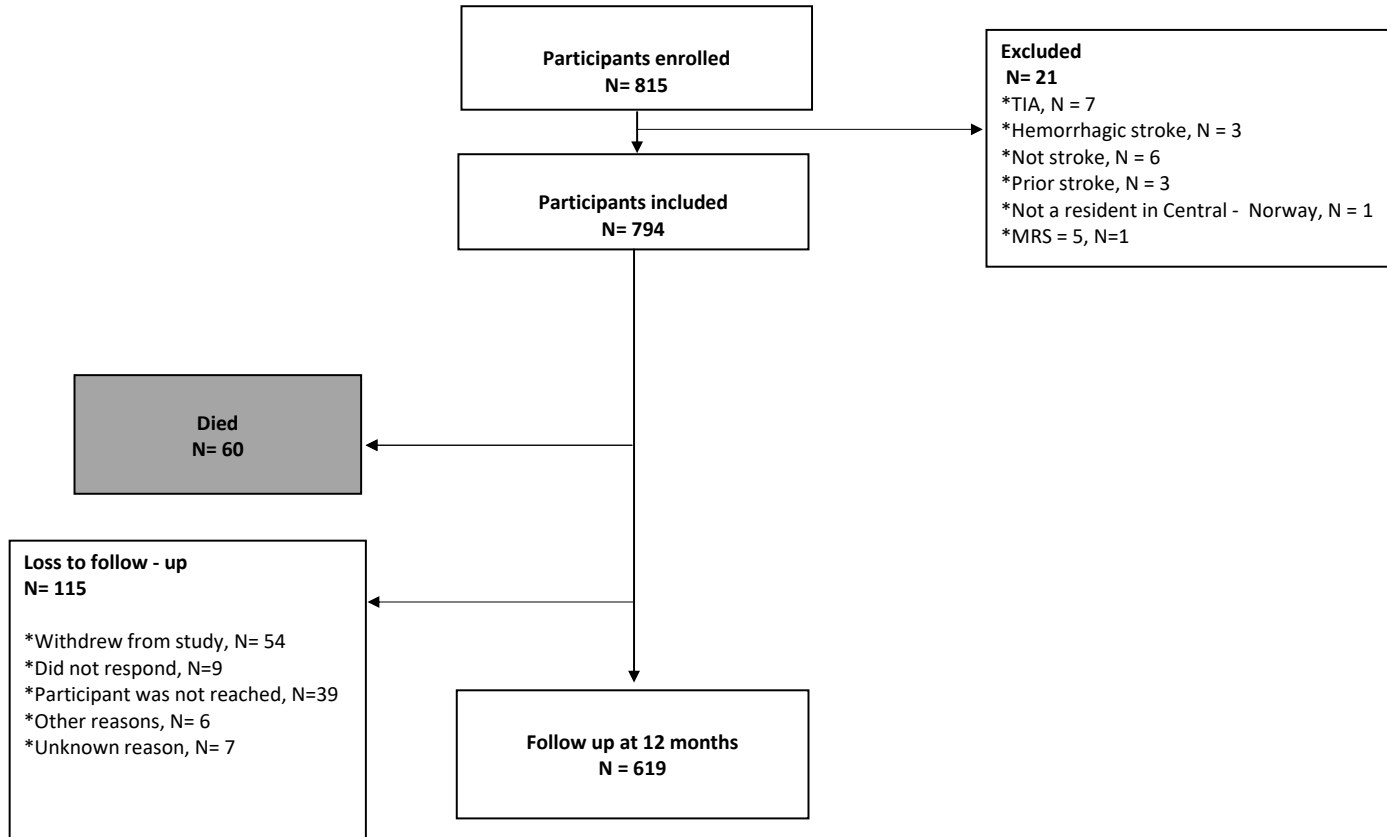


SUPPLEMENTARY FIGURES AND TABLES

Supplementary figure S1. Patient flow chart



Supplementary Table S1. Multivariable cox proportional hazard model 1 for death including complication during hospital stay. In the multivariable models, the total number of available cases was n= 737 and events n= 54.

| Characteristic | Multivariable model 1 | | |
|-------------------------------------|-----------------------|---------------------|---------|
| | HR ¹ | 95% CI ² | p-value |
| Age (years) | 1.06 | 1.03- 1.10 | <0.001 |
| Male | 1.31 | 0.72- 2.37 | 0.4 |
| Modified Rankin scale | | | |
| Dependent 3-4 | 0.55 | 0.28- 1.09 | 0.087 |
| Complications during hospital stay* | 2.61 | 1.47- 4.63 | 0.001 |
| NIHSS Day 1 [†] | 1.09 | 1.05- 1.13 | <0.001 |
| Atrial fibrillation | 0.94 | 0.52- 1.70 | 0.8 |
| Antihypertensiva | 0.72 | 0.41- 1.28 | 0.3 |
| Statin therapy | 0.36 | 0.19- 0.67 | 0.001 |
| Diabetes mellitus | 1.16 | 0.58- 2.33 | 0.7 |
| CAD [§] | 2.84 | 1.54- 5.23 | <0.001 |

¹HR= Hazard Ratio, ²CI= Confidence interval, *Complications during hospital stay: seizures, neurological progression, falls and infections, [†]National Institutes of Health Stroke Scale (NIHSS), [§]Coronary artery disease (CAD)

Supplementary Table S2. Multivariable cox proportional hazard model for mortality adjusted for age, stroke severity and thrombolytic treatment.

The total number of available cases was n= 741 and events n= 55.

| Characteristic | HR¹ | 95% CI¹ | p-value |
|-----------------------|-----------------------|---------------------------|----------------|
| Age (years) | 1.08 | 1.05-1.12 | <0.001 |
| Thrombolysis | 1.32 | 0.73-2.41 | 0.40 |
| NIHSS Day 1 | 1.10 | 1.06-1.13 | <0.001 |

¹HR = Hazard Ratio, CI = Confidence interval

Supplementary Table S3. Multivariable cox proportional hazard model 1 for mortality with hypertension prior to stroke as predictor. The total number of available cases was n= 737 and events= 54.

| Characteristic | Multivariable model 1 | | |
|--------------------------|-----------------------|---------------------|---------|
| | HR ¹ | 95% CI ² | p-value |
| Age (years) | 1.05 | 1.02- 1.09 | 0.004 |
| Male | 1.40 | 0.77- 2.54 | 0.3 |
| Modified Rankin scale | | | |
| Dependent 3-4 | 0.56 | 0.28- 1.11 | 0.10 |
| NIHSS Day 1 [†] | 1.09 | 1.06- 1.12 | <0.001 |
| Atrial fibrillation | 0.79 | 0.43- 1.44 | 0.4 |
| Hypertension pre-stroke | 2.54 | 1.29- 4.98 | 0.007 |
| Statin therapy | 0.34 | 0.18- 0.65 | 0.001 |
| Diabetes mellitus | 0.90 | 0.45- 1.80 | 0.8 |
| CAD [§] | 2.41 | 1.32- 4.43 | 0.004 |

¹HR= Hazard Ratio, ²CI= Confidence interval, [†]National Institutes of Health Stroke Scale (NIHSS), [§]Coronary artery disease (CAD)

Supplementary Table S4. Descriptive data for participants (MRS 0-2 at baseline) with and without complications during hospital stay

| | No complications during hospital stay | Complications during hospital stay |
|---|---------------------------------------|------------------------------------|
| BASELINE CHARACTERISTICS | N= 556 | N=107 |
| Age (years) Mean, Median [Min, Max] | 70.7, 71.0 [27.0,96.0] | 75.7, 78 [37.0, 94.0] |
| Sex - Male | 337 (60.6%) | 50 (46.7%) |
| STROKE CHARACTERISTICS | | |
| Stroke etiology (TOAST) | | |
| Small - vessel occlusion | 106 (19.1%) | 19 (17.8%) |
| Large - artery atherosclerosis | 92 (16.6%) | 36 (33.6%) |
| Cardioembolism | 159 (28.6%) | 19 (17.8%) |
| Stroke of other determined etiology | 51 (9.2%) | 8 (7.5%) |
| Stroke of undetermined etiology | 148(26.6%) | 25 (23.4%) |
| NIHSS Day 1 Mean, Median [Min, Max] | 2.4, 1.0 [0, 34.0] | 7.5, 4.0 [0,38.0] |
| Missing | 38 (6.8%) | 41 (6.4%) |
| CARDIOVASCULAR RISK FACTORS & COMORBIDITIES | | |
| Coronary heart disease: Myocardial infarction or Angina pectoris | 112 (20.1%) | 18 (16.8%) |
| Atrial fibrillation | 102(18.4%) | 39 (36.5%) |
| Diabetes mellitus | 91 (16.4%) | 25 (23.4%) |
| Smoking status | | |
| Current smoker | 121 (21.8%) | 23 (21.5%) |
| Missing | 2 (0.4%) | 0 (0.0%) |
| Charlson comorbidity burden | | |
| 0 - None | 238 (42.8%) | 36 (33.6%) |
| 1 - Low | 126 (22.7%) | 25 (23.4%) |
| 2 - 3 - Moderate | 131 (23.6%) | 28 (26.2%) |
| 4 or more - High | 61 (11.0%) | 18 (16.8%) |
| PATIENT CARE PARAMETERS & MEDICATIONS AT DISCHARGE | | |
| Thrombolytic therapy | 116 (20.9%) | 28 (26.2%) |
| Antihypertensive therapy | 341 (61.3%) | 65 (60.8%) |
| Statin therapy | 502 (90.3%) | 83 (77.6%) |
| Antithrombotic therapy | 544 (97.8%) | 96 (89.7%) |

