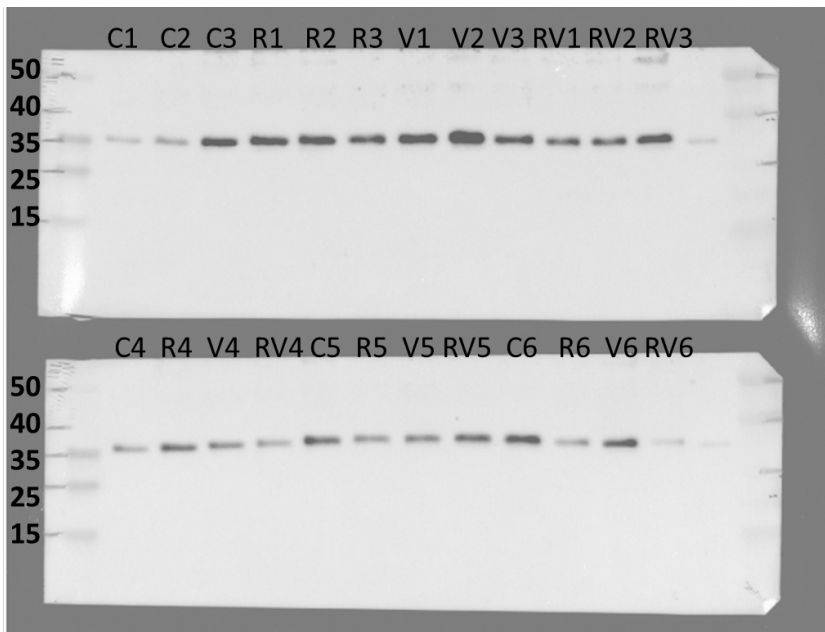


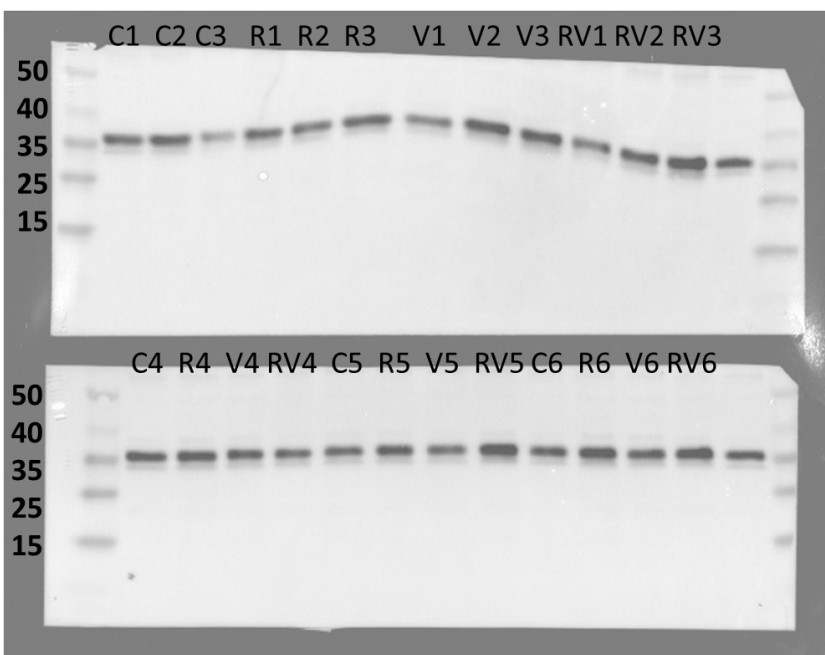
Supplementary Figure 1. Original gels used in Western blots

Two gels were used per protein in each tissue. Each of them contained 3 samples from each group: control (C), rapamycin (R), valine (V) and rapamycin+Valine (RV). The sum of the two gels result in 6 samples per group as described in Materials and Methods

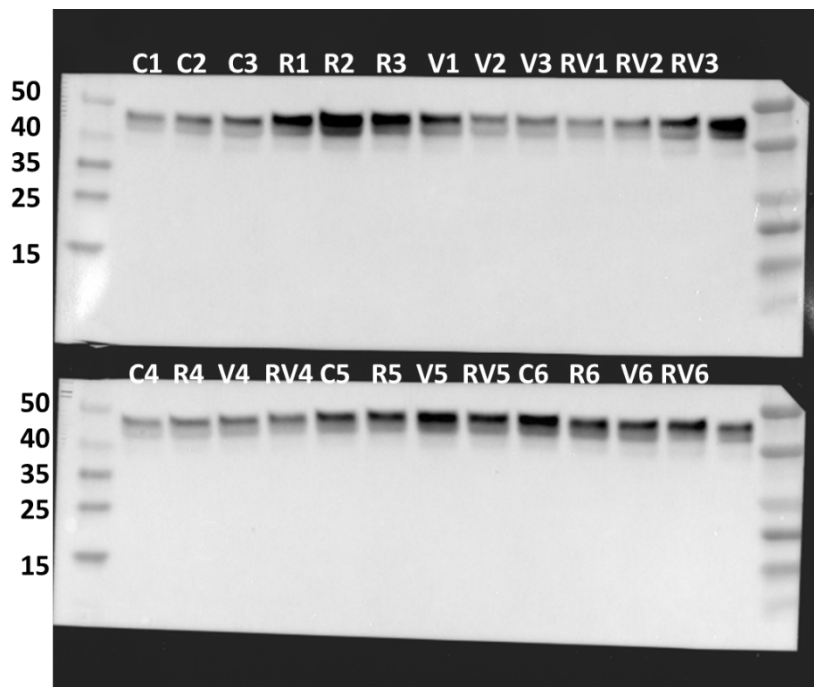
Bsx Hypothalamus (36 kDa)



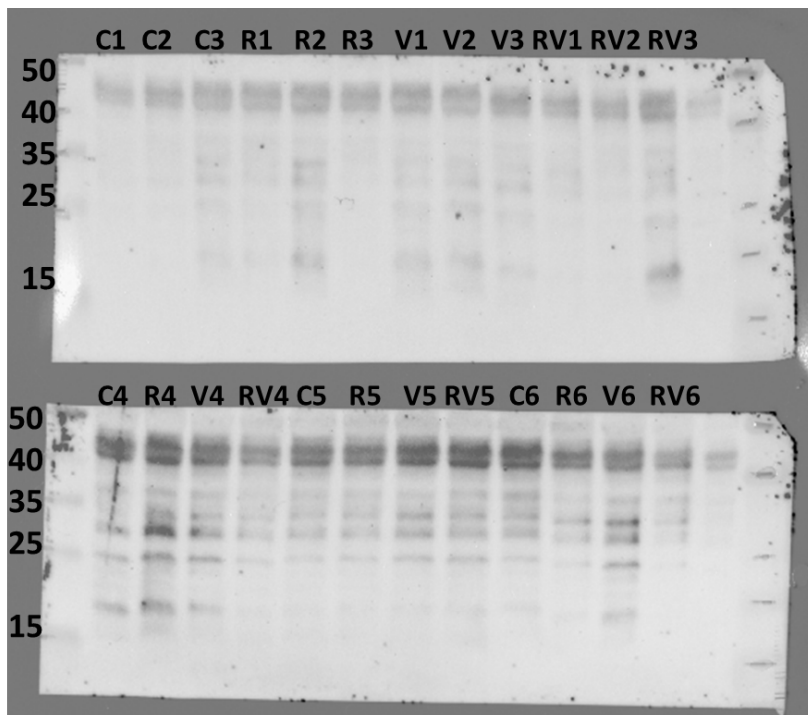
Bsx Telencephalon (36 kDa)



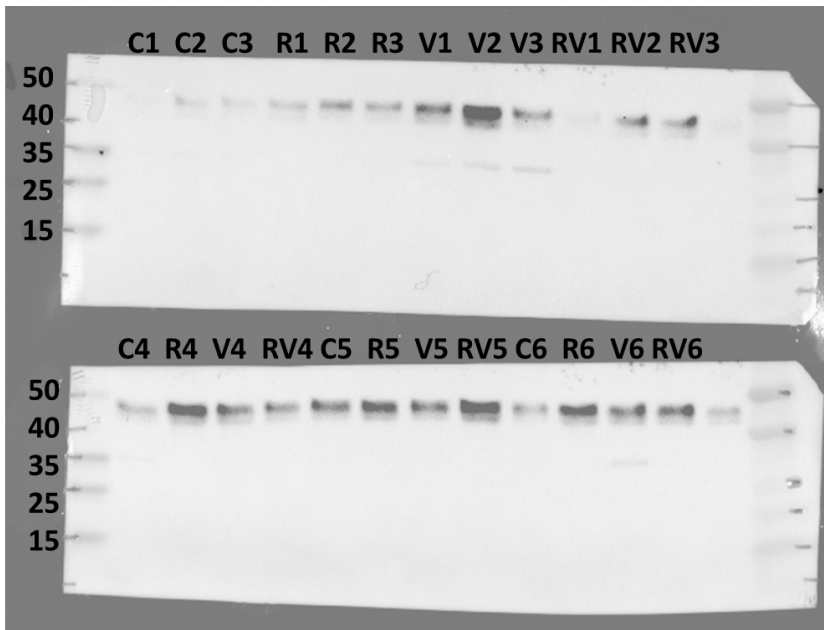
p-Creb Hypothalamus (43 kDa)



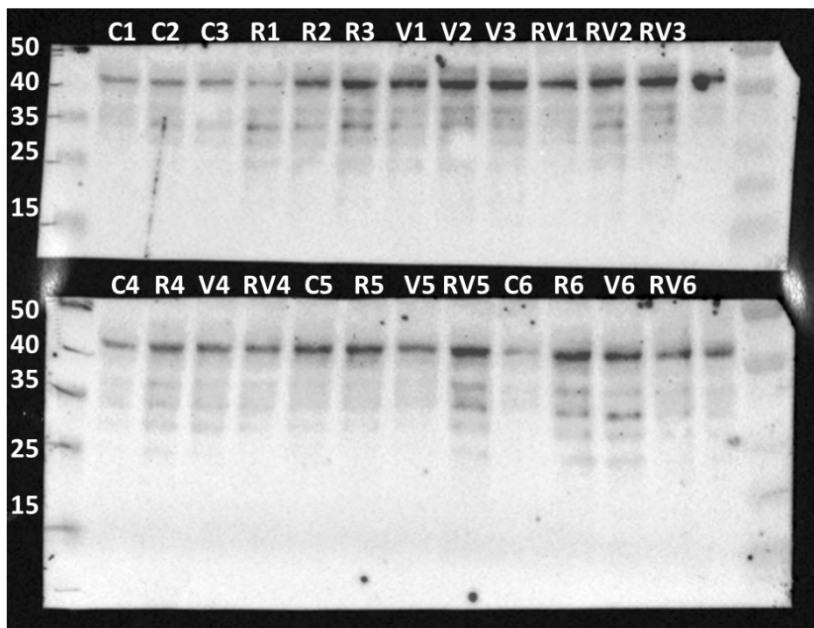
Creb Hypothalamus (43 kDa)



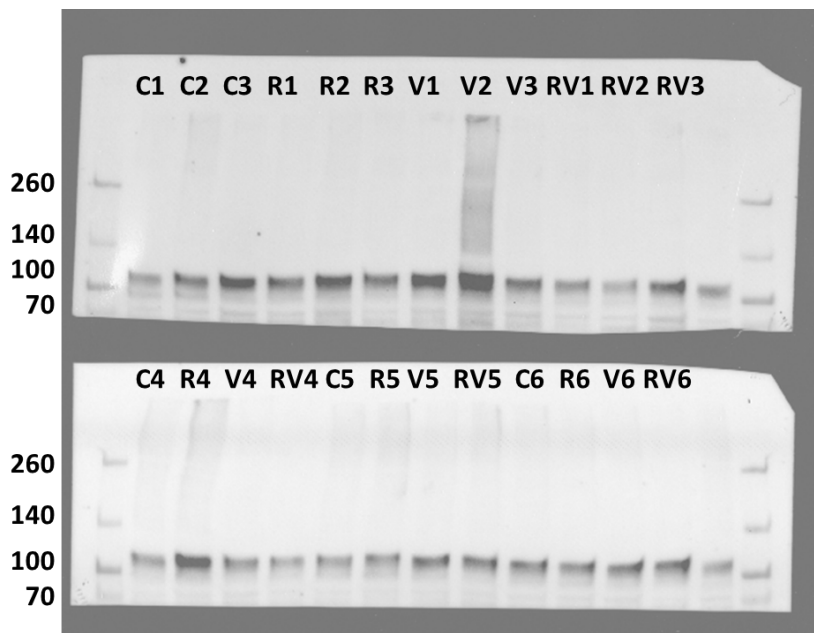
p-Creb Telencephalon (43 kDa)



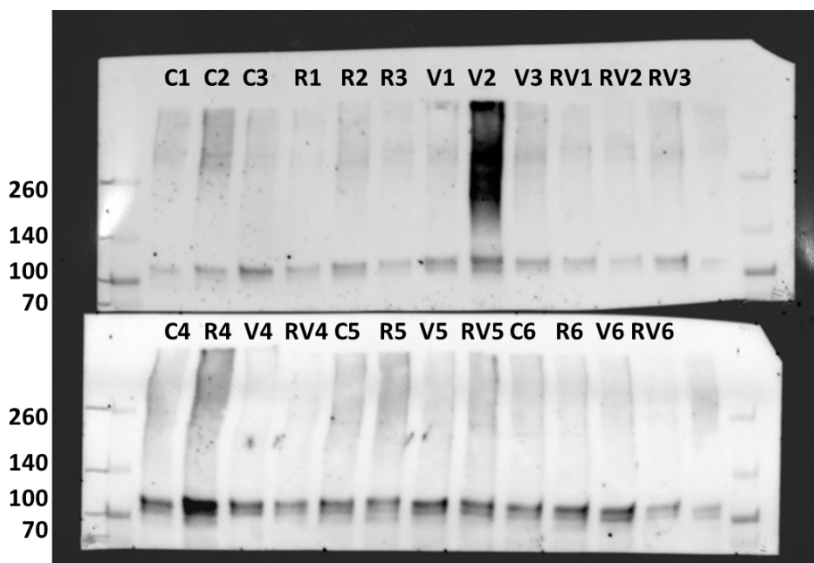
Creb Telencephalon (43 kDa)



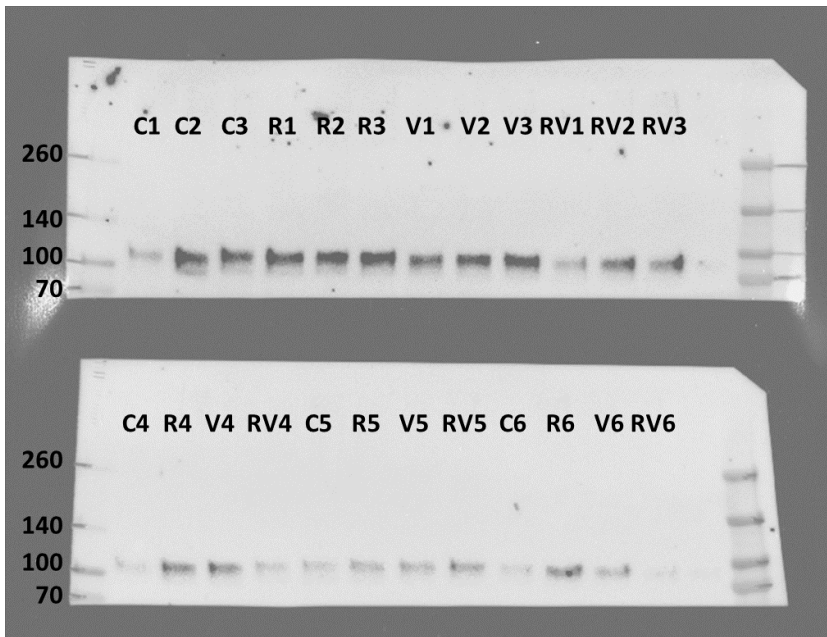
p-Foxo1 Hypothalamus (78-82 kDa)



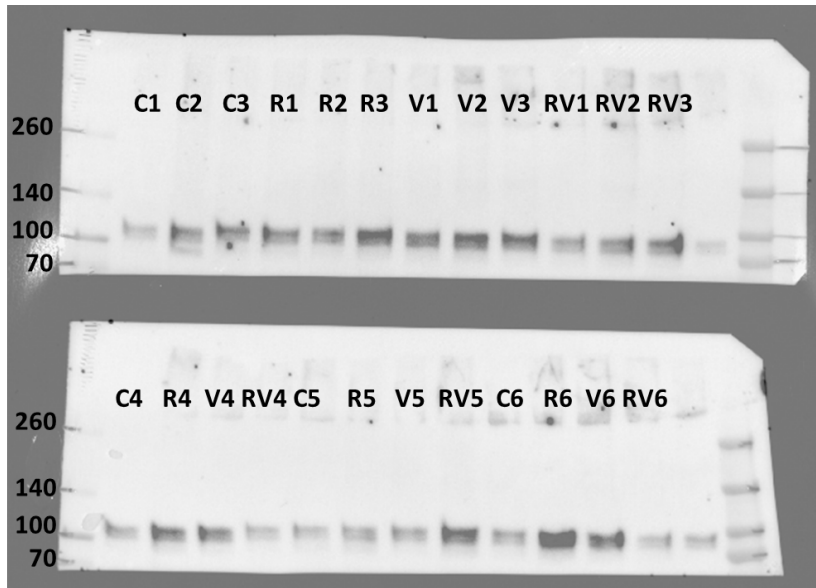
Foxo1 Hypothalamus (78-82 kDa)



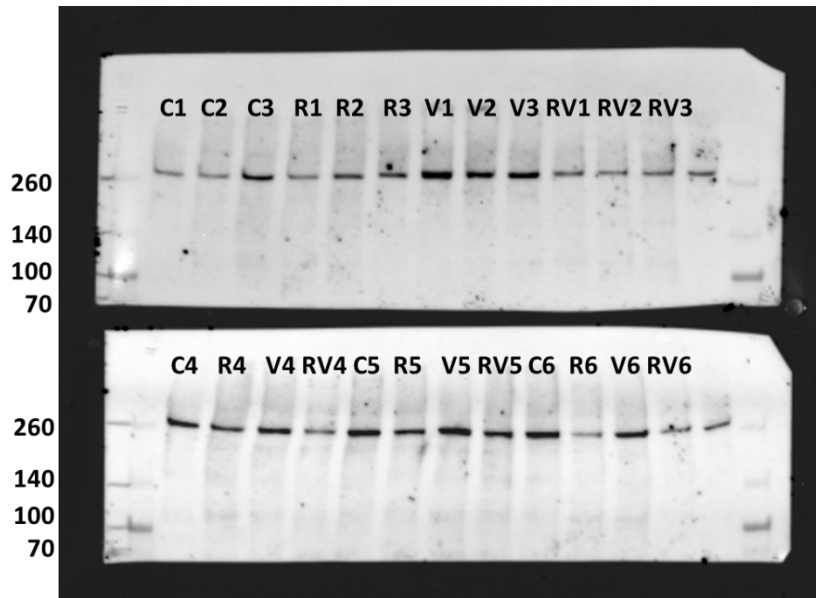
p-Foxo1 Telencephalon (78-82 kDa)



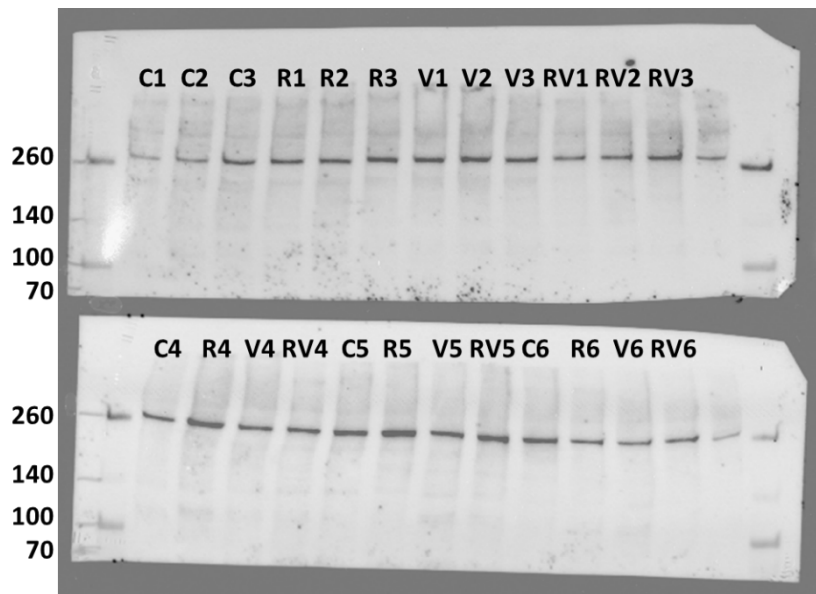
Foxo1 Telencephalon (78-82 kDa)



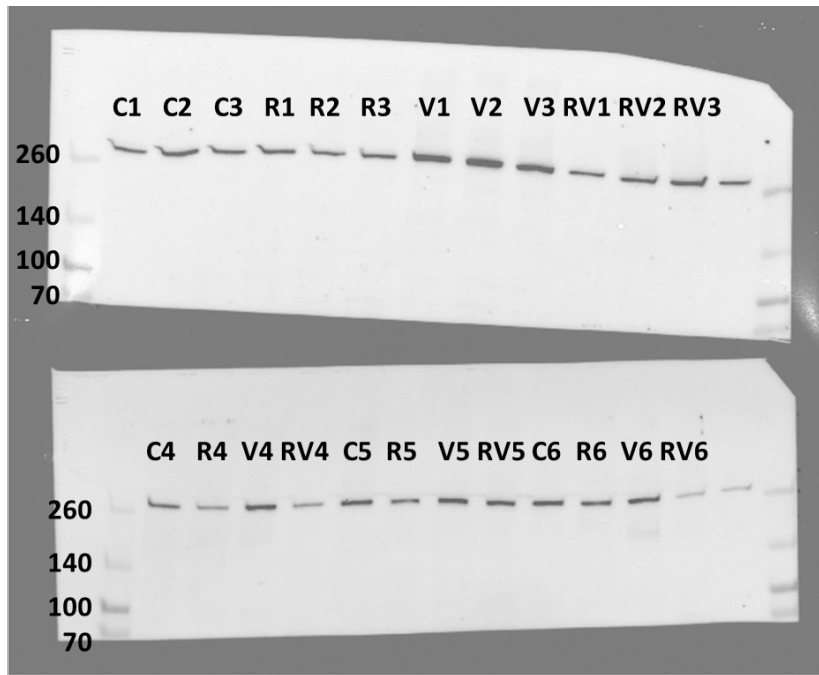
p-mTor Hypothalamus (290 kDa)



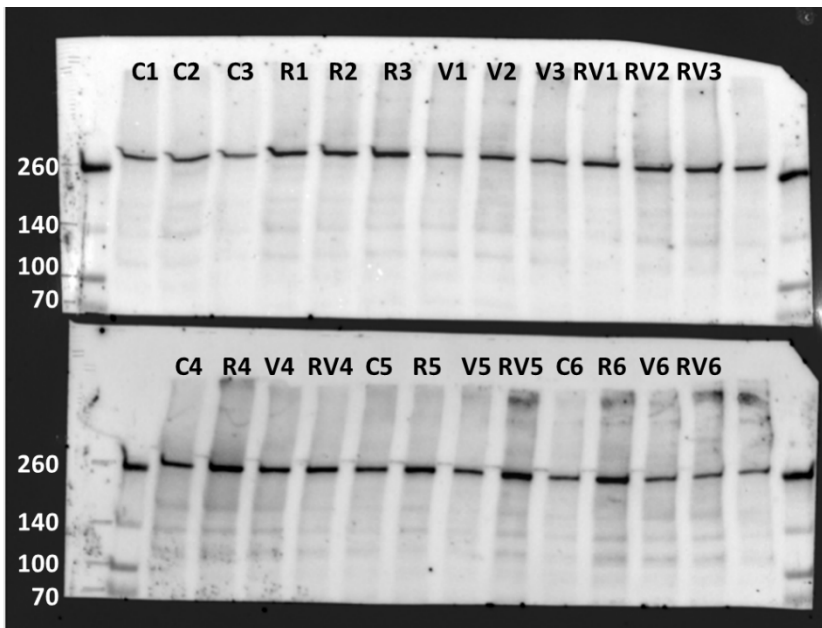
mTor Hypothalamus (290 kDa)



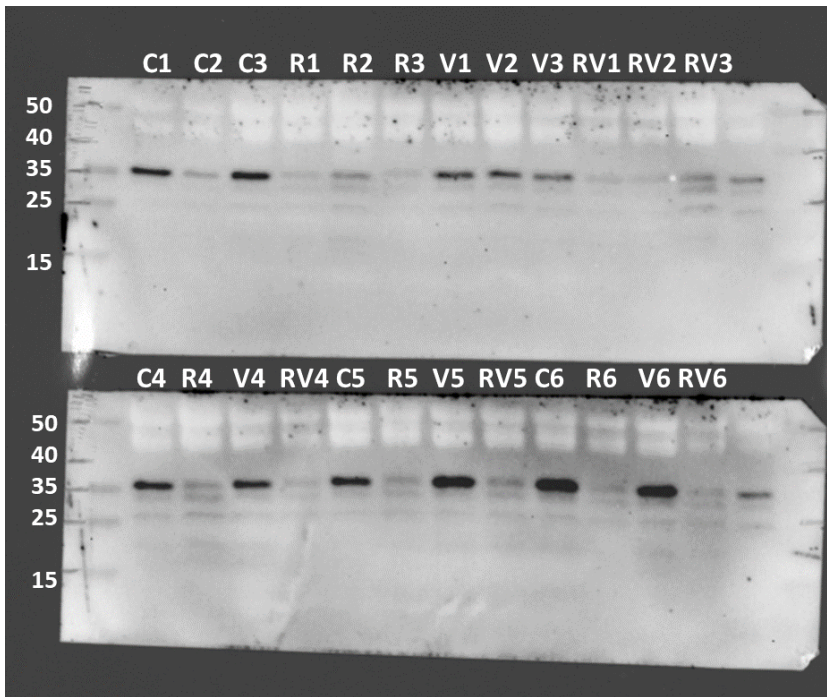
p-mTor Telencephalon (290 kDa)



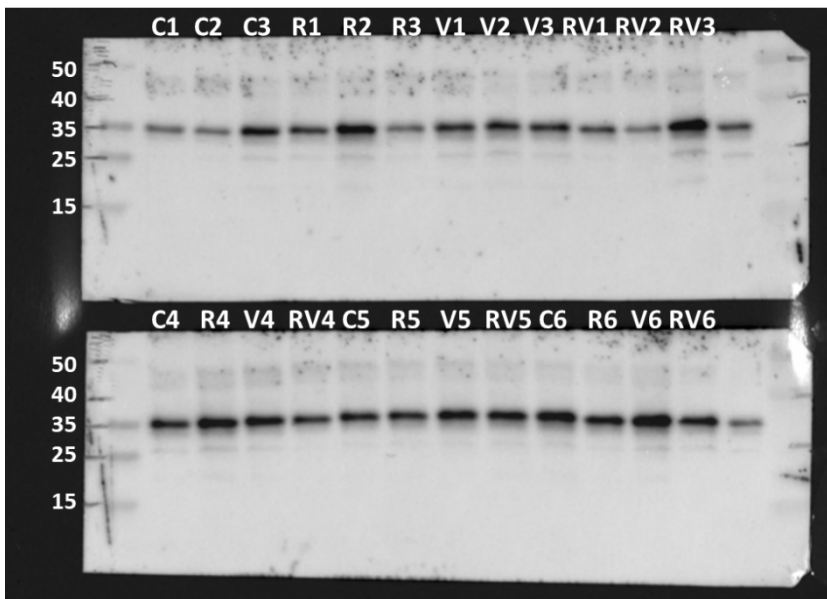
mTor Telencephalon (290 kDa)



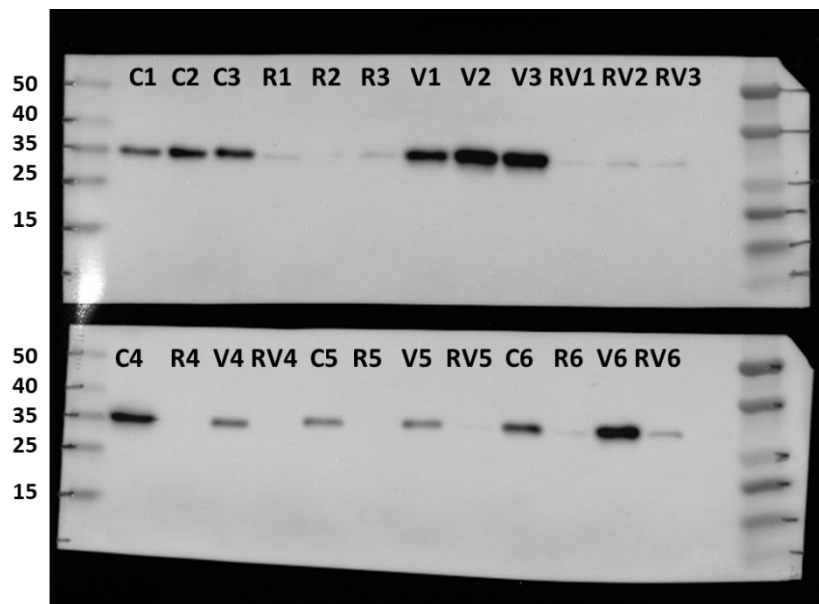
p-S6 Hypothalamus (32 kDa)



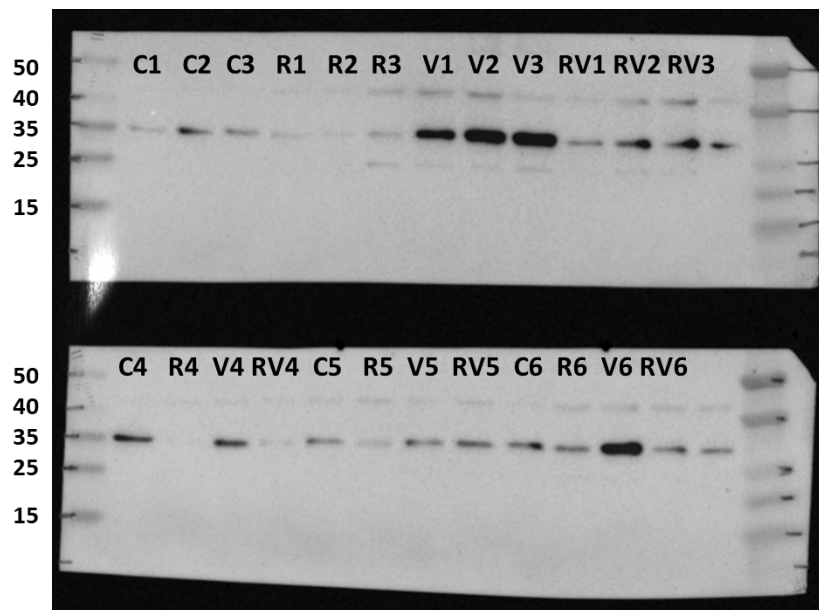
S6 Hypothalamus (32 kDa)



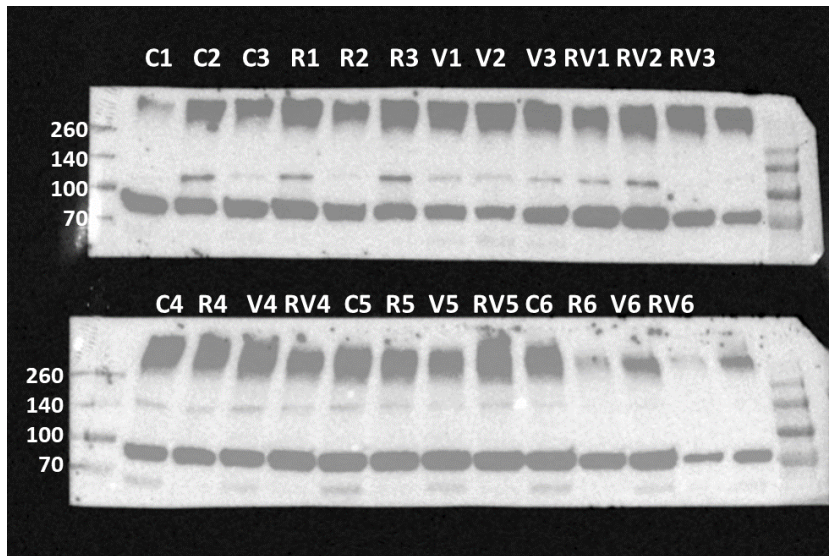
p-S6 Telencephalon (32 kDa)



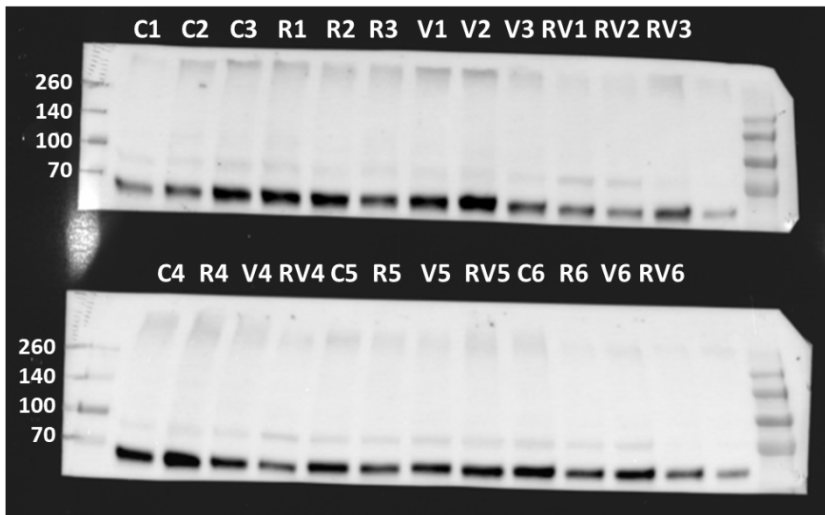
S6 Telencephalon (32 kDa)



p-S6K1 Hypothalamus (70 kDa)



S6K1 Hypothalamus (70 kDa)



p-S6K1 Telencephalon (70 kDa)



S6K1 Telencephalon (70 kDa)

