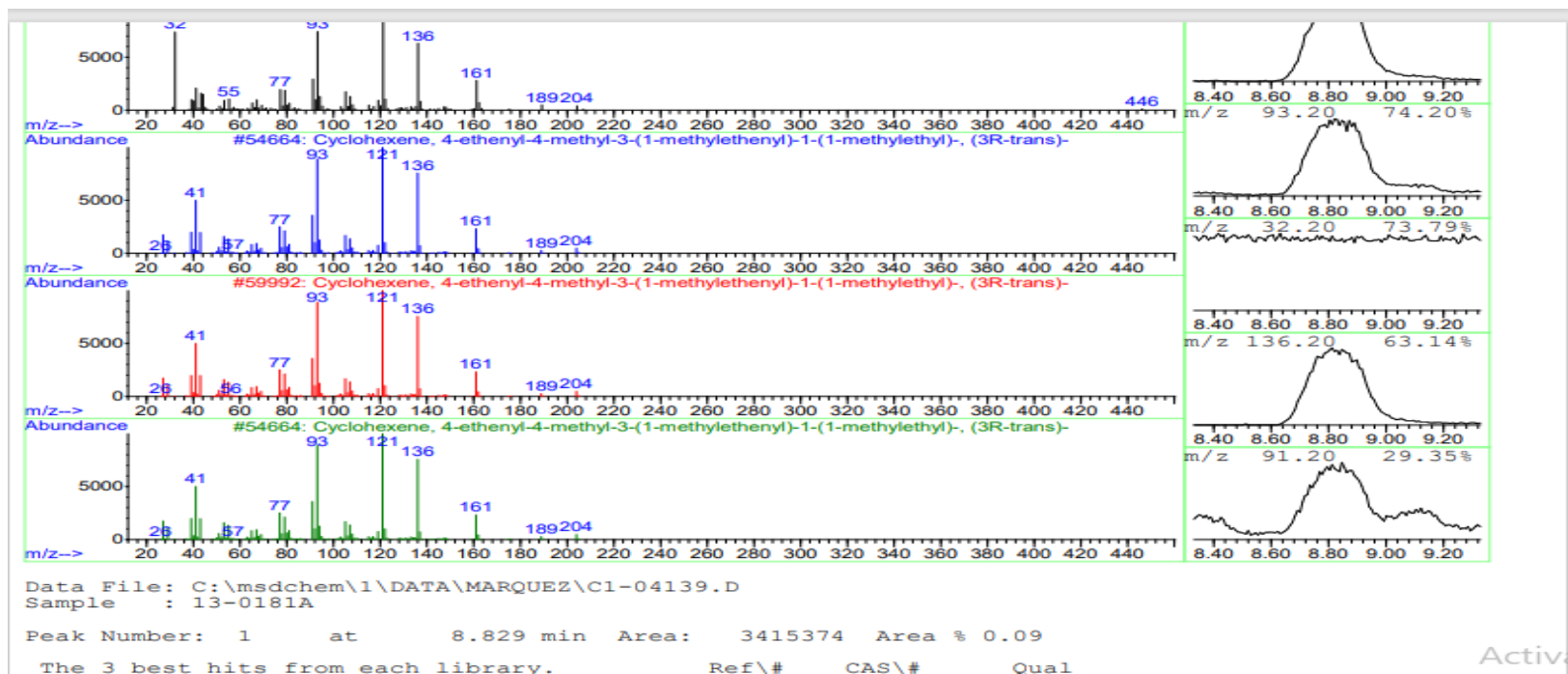
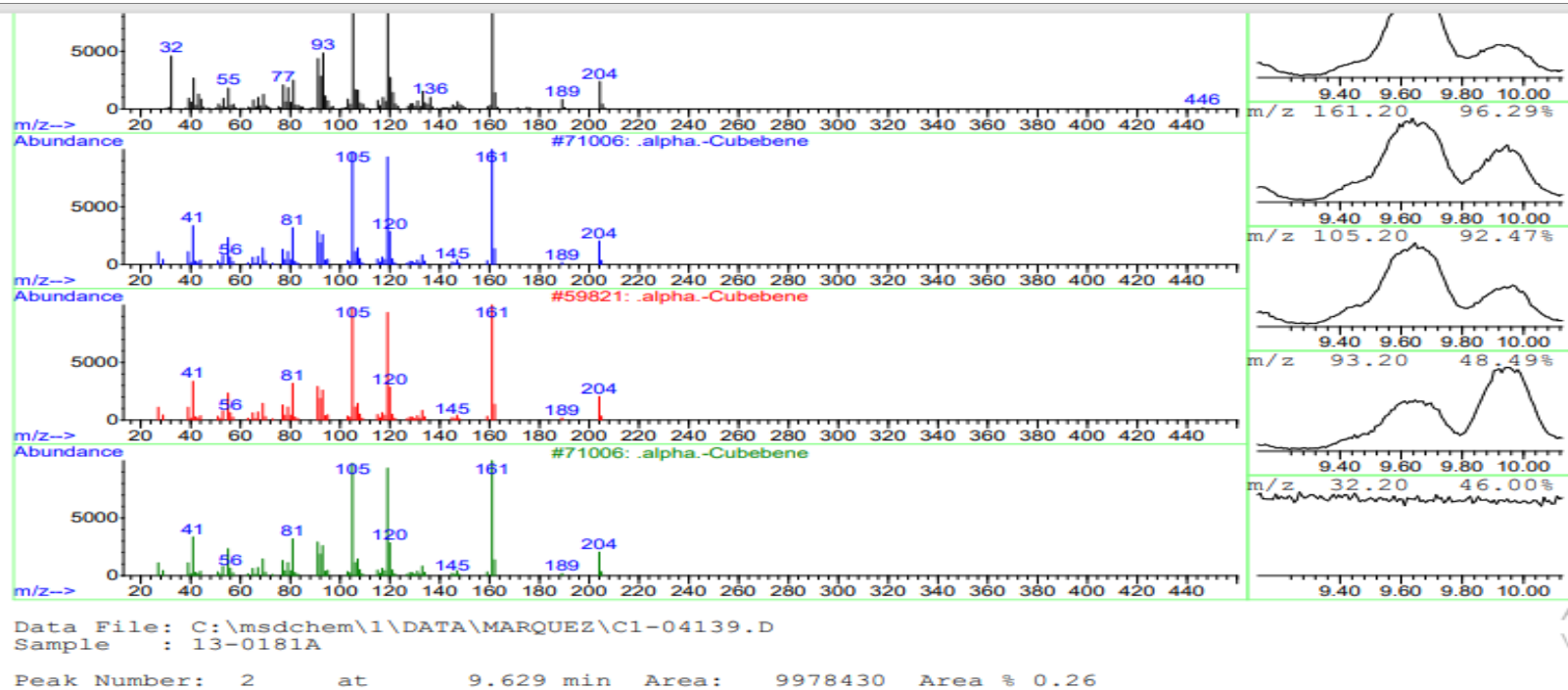


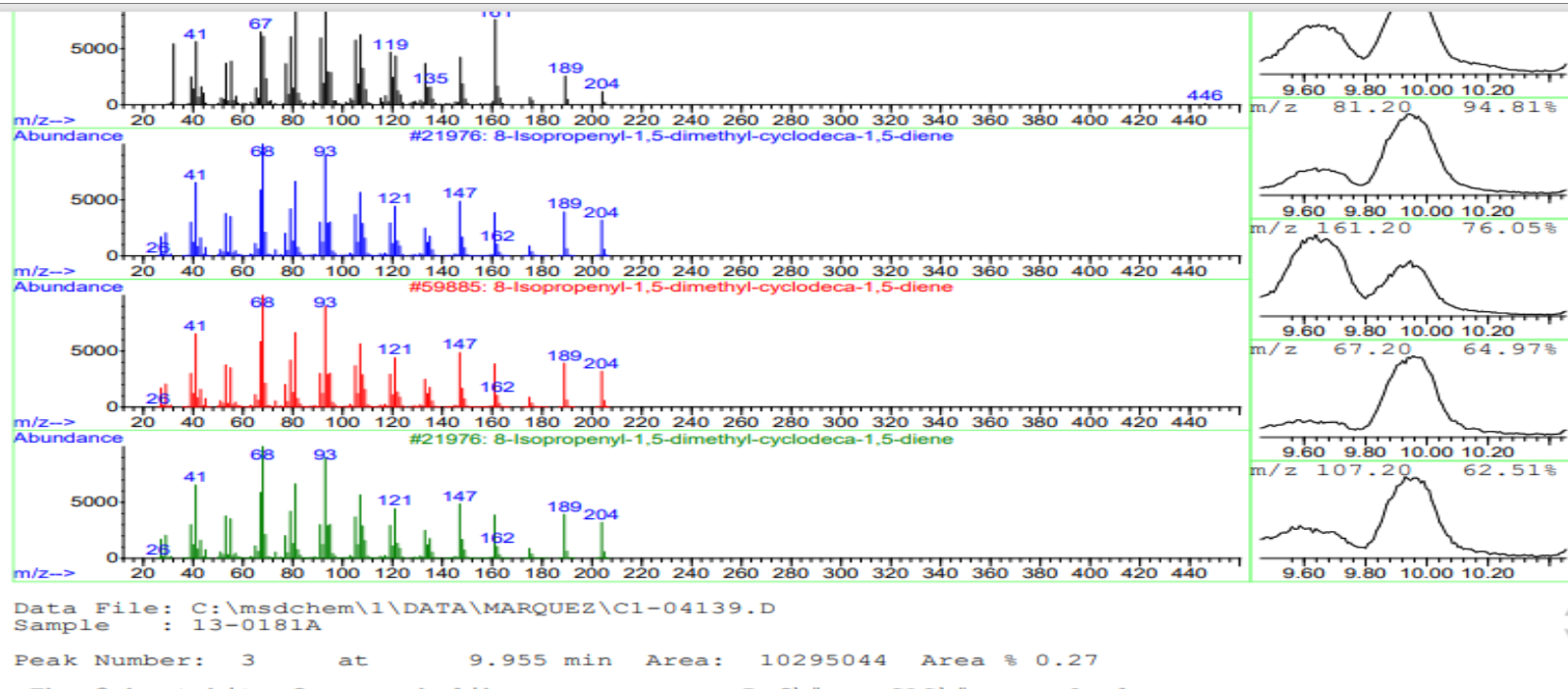
δ-Elemene



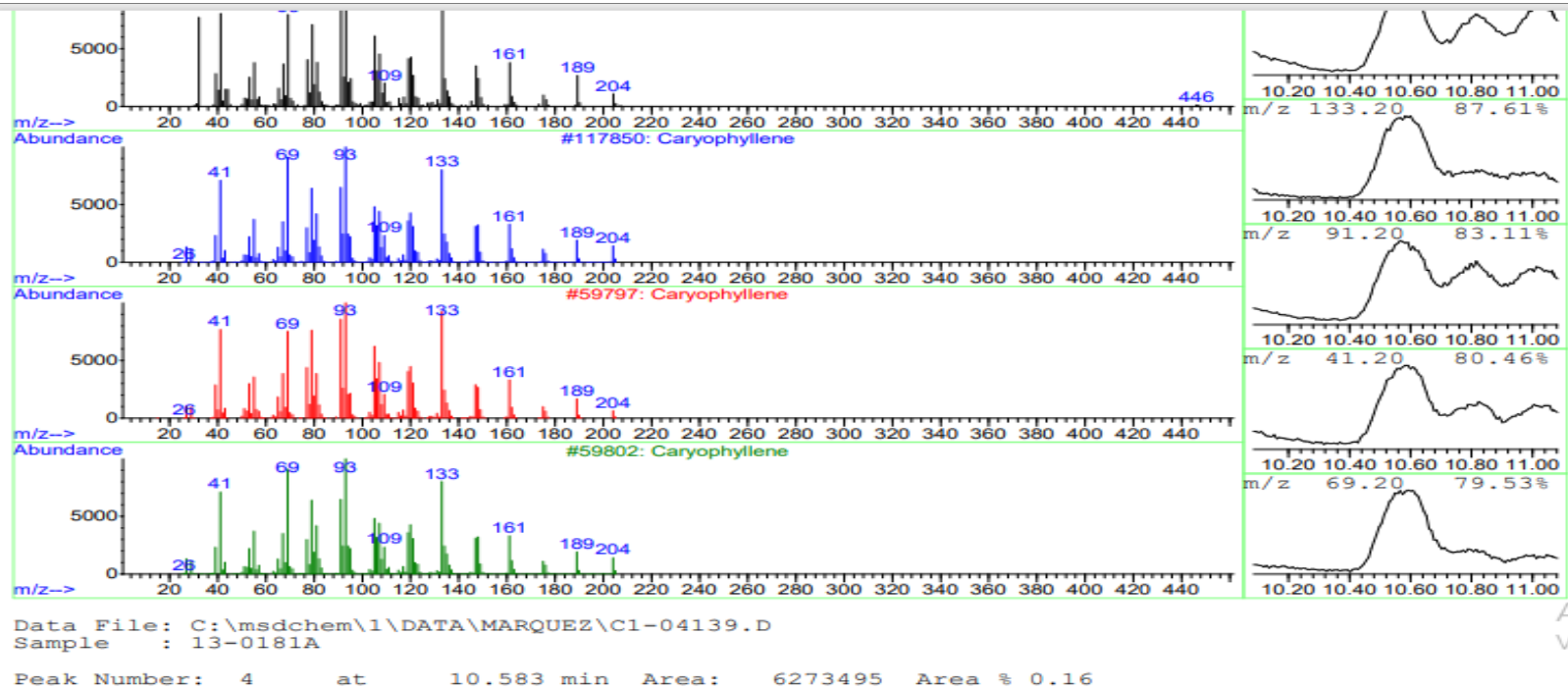
α -Cubebene



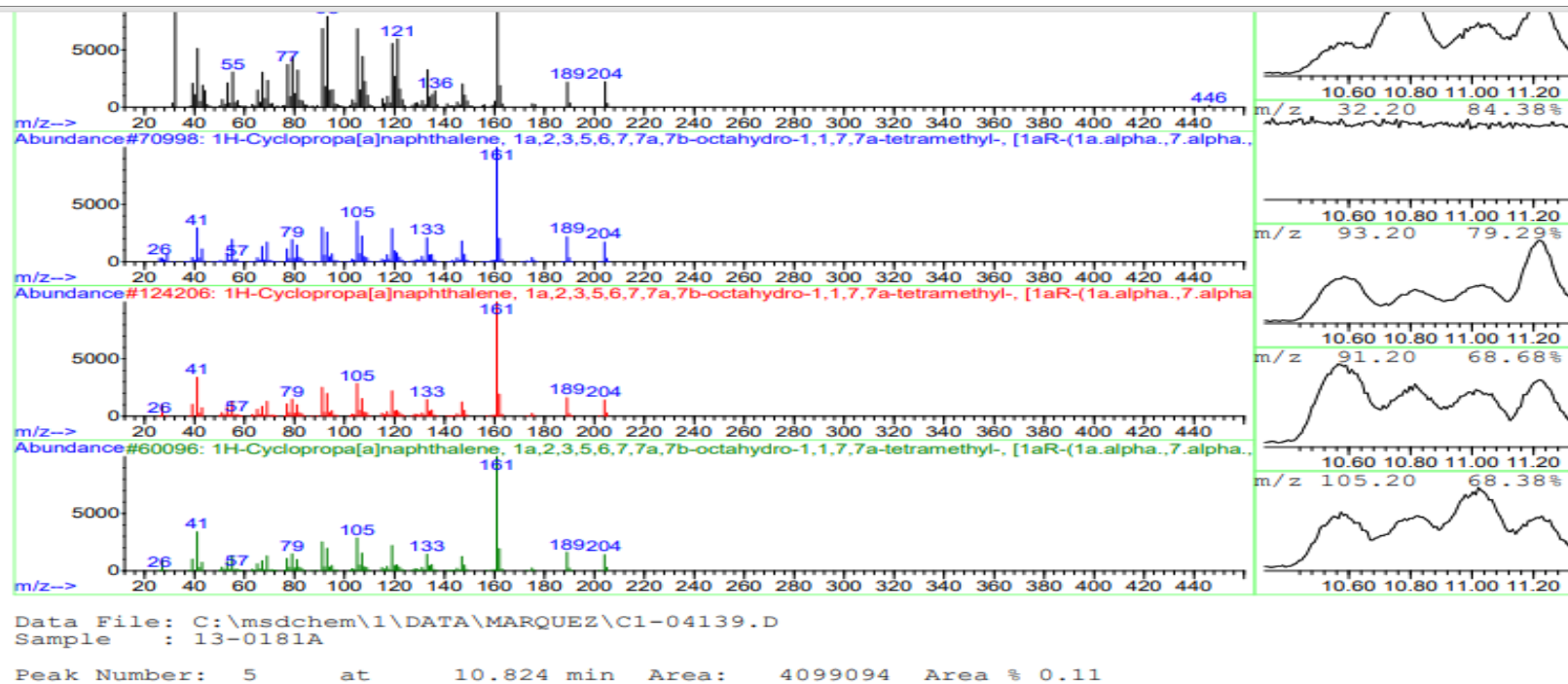
Germacrene A



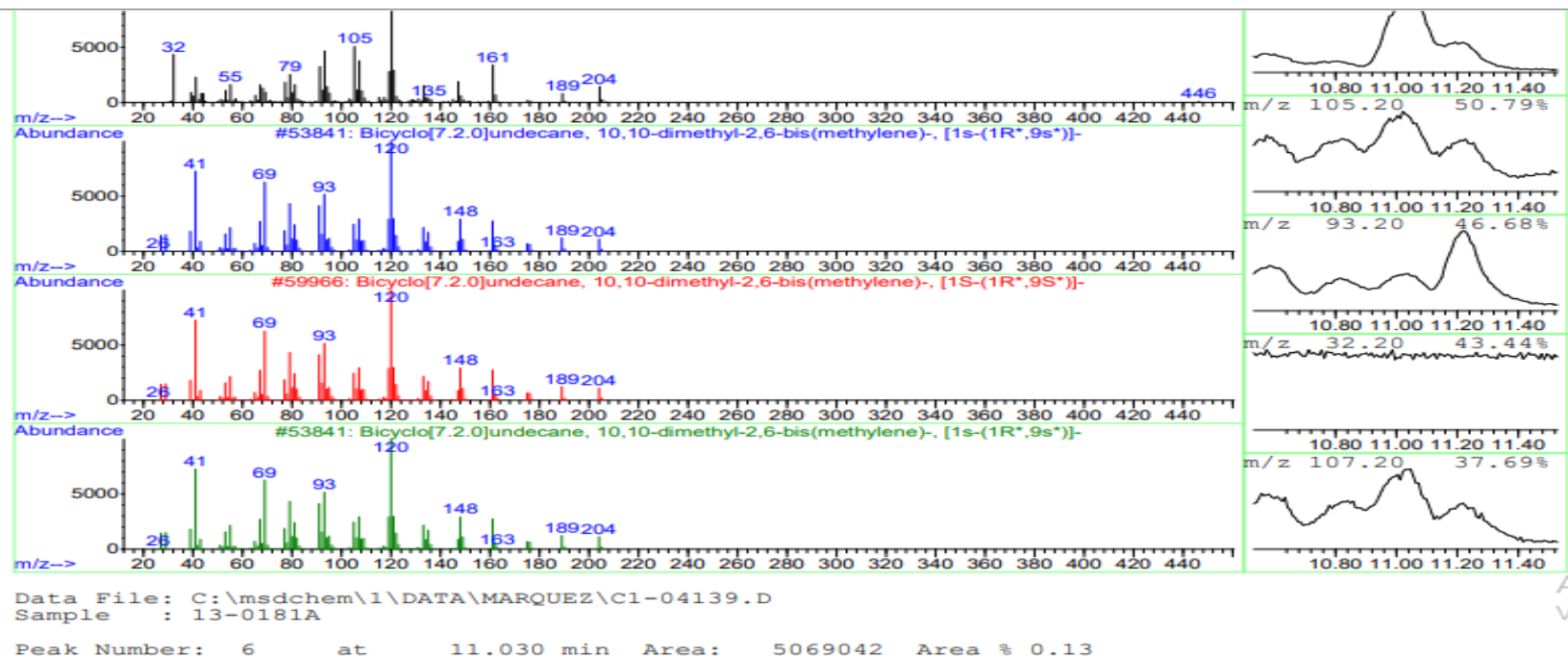
Caryophyllene



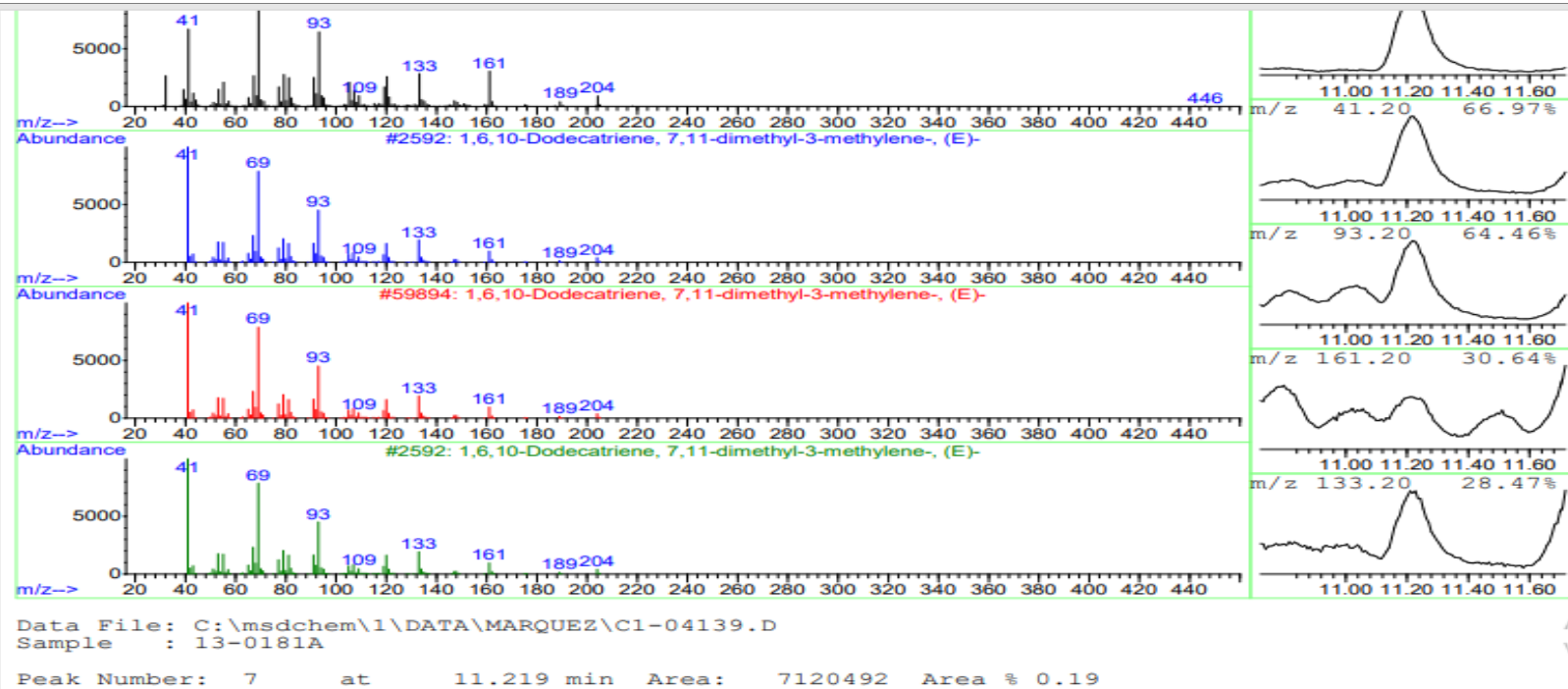
Calarene



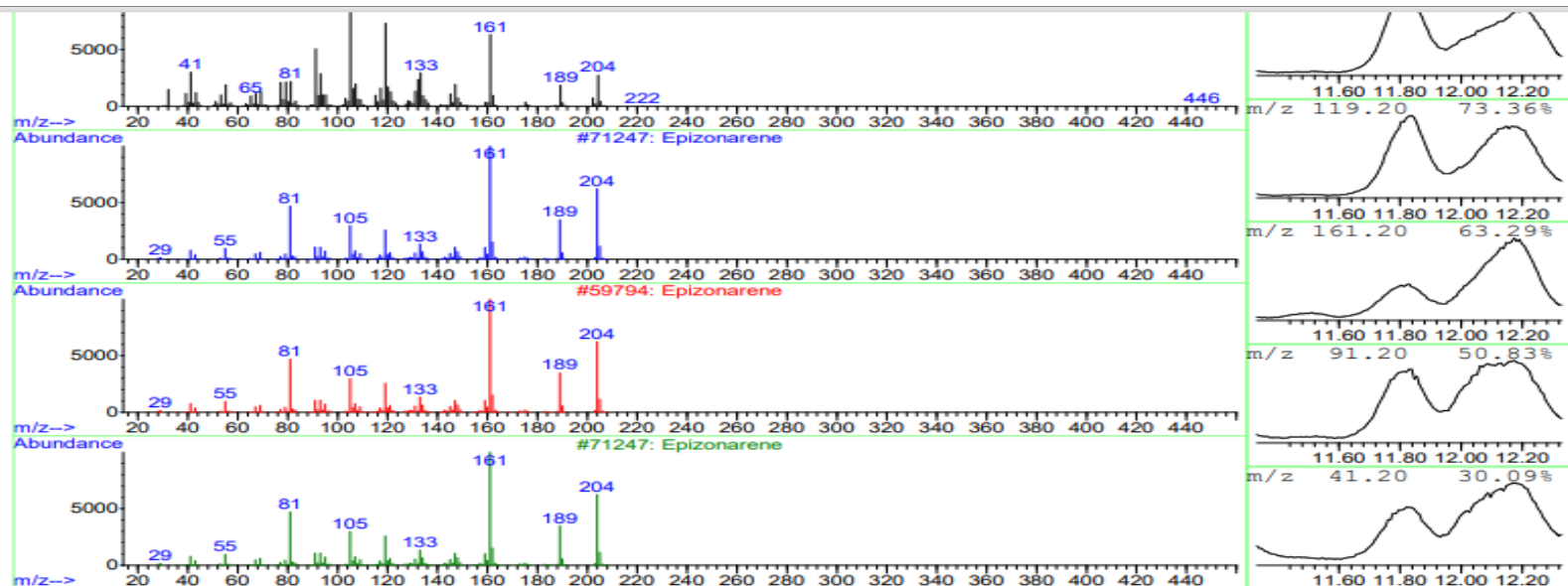
Caryophylladienol II



(E)- β -Farnesene



Epizonarene

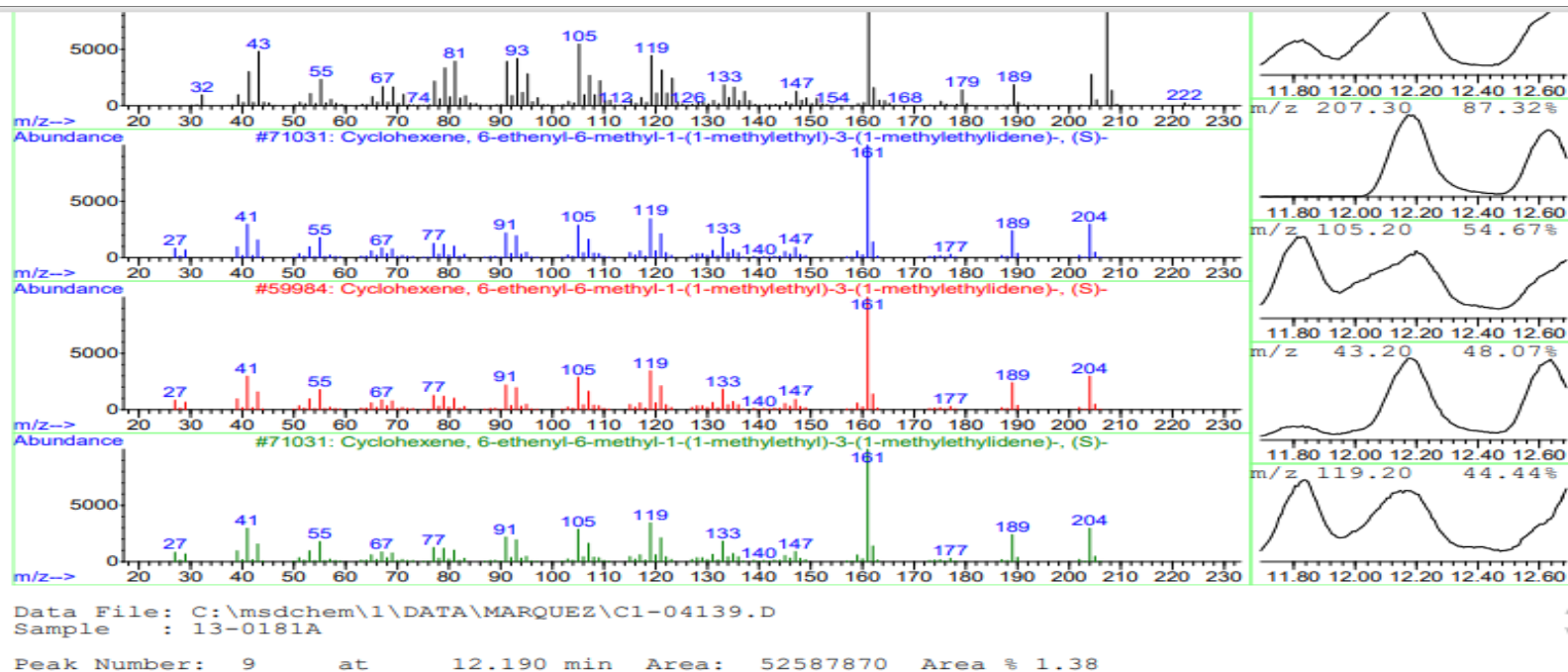


Data File: C:\msdchem\1\DATA\MARQUEZ\C1-04139.D
Sample : 13-0181A

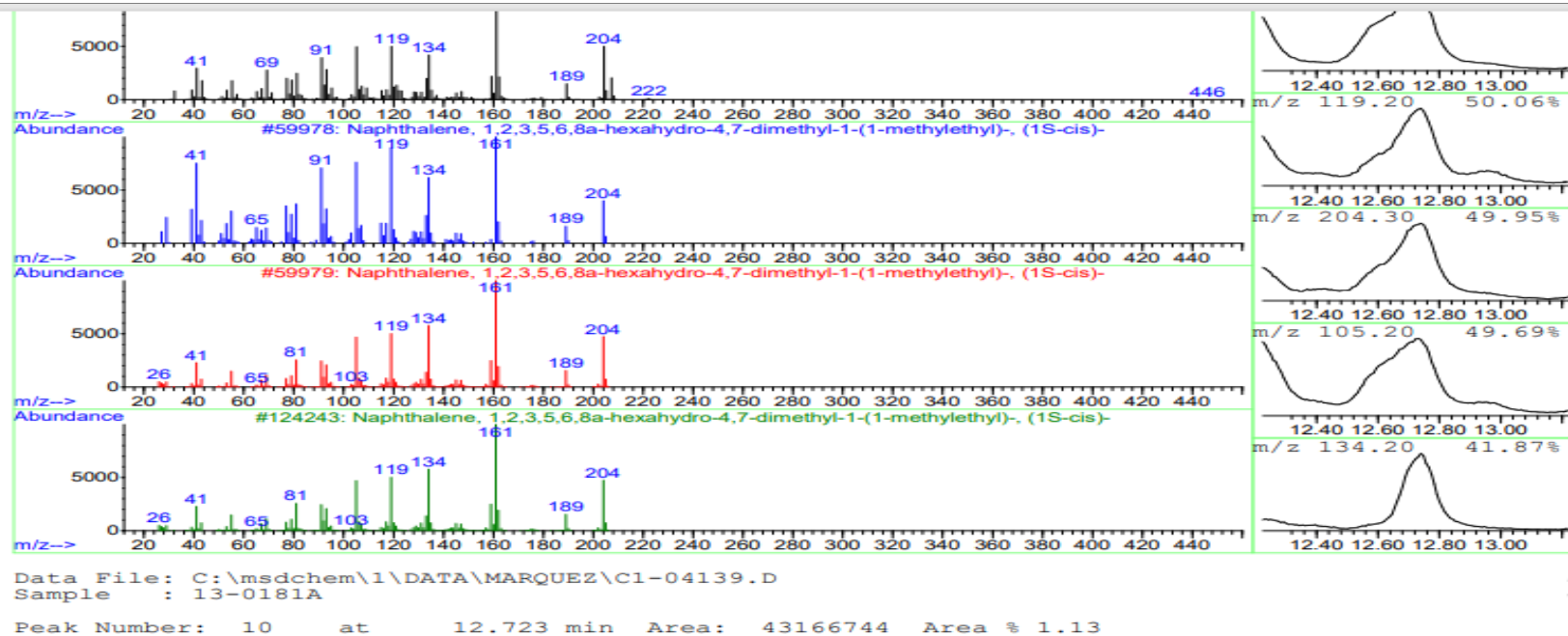
Peak Number: 8 at 11.829 min Area: 18970077 Area % 0.50

A
Vc

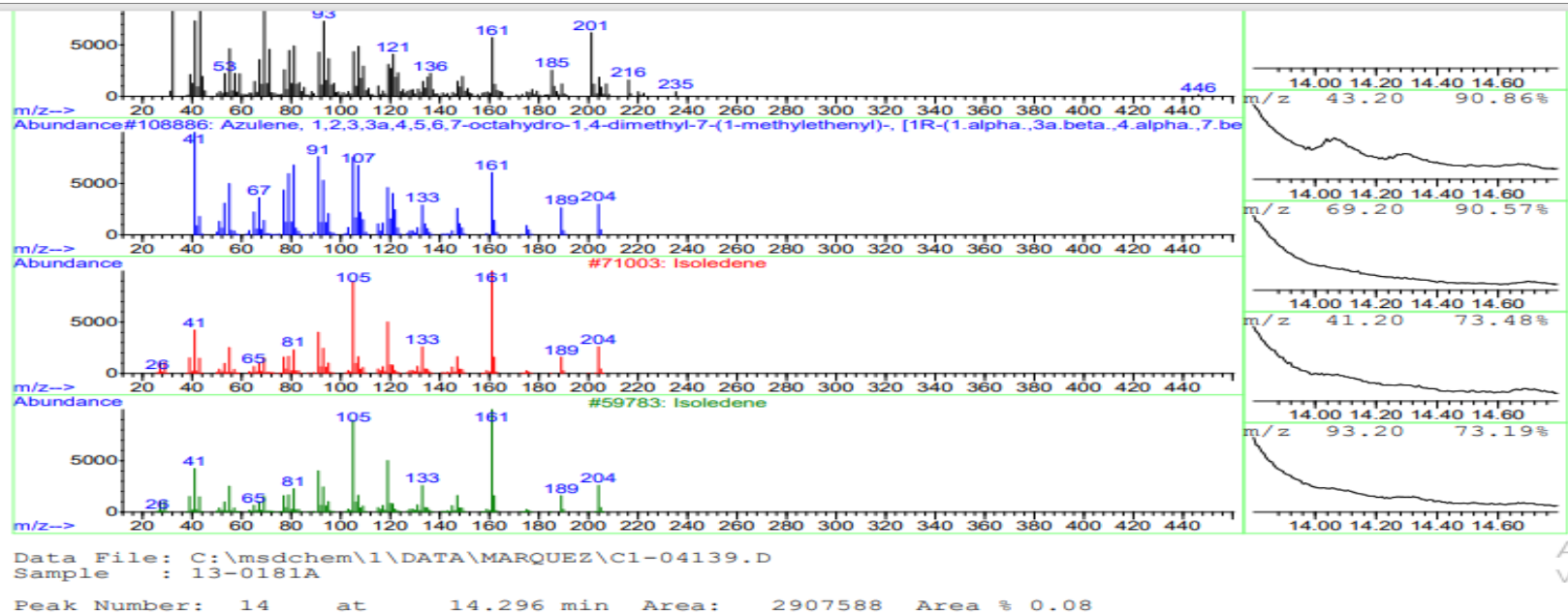
α -Elemene



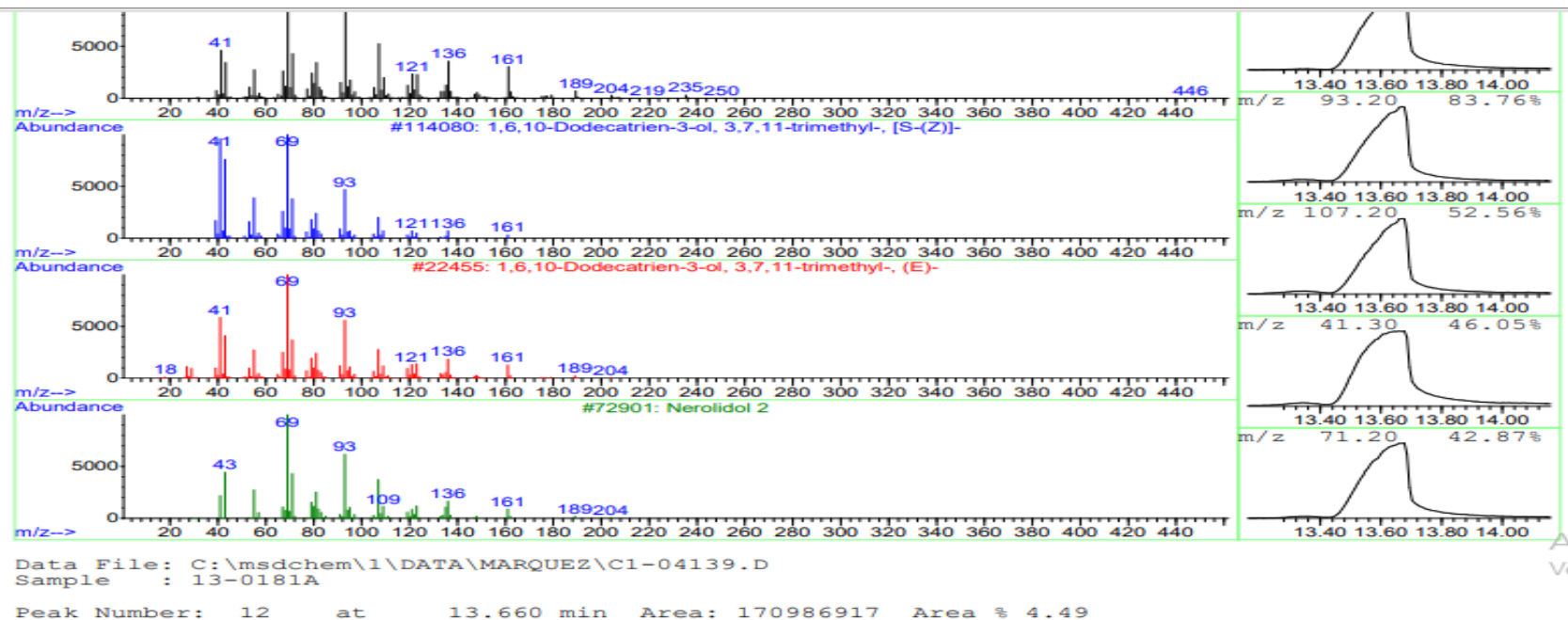
δ -Cadinene



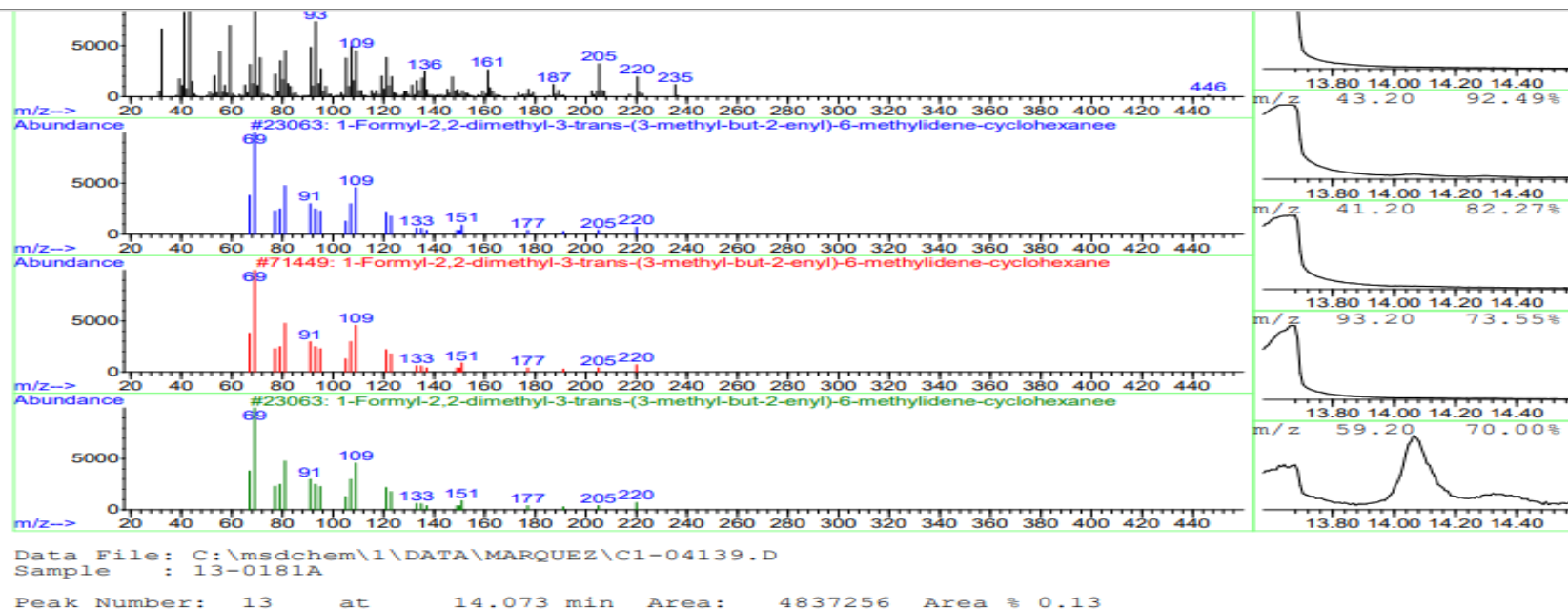
γ -Gurjunene



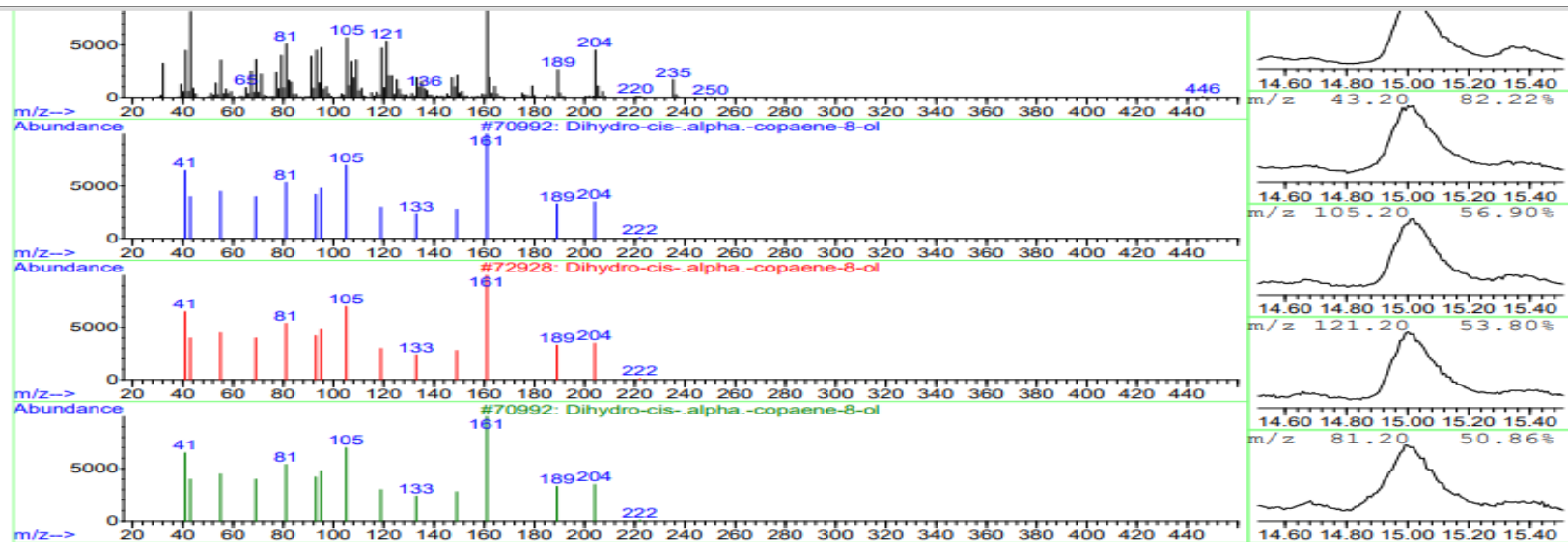
Nerolidol



1-Formyl-2,2-dimethyl-3-trans-(3-methyl-but-2-enyl)-6-methylidene-cyclohexane



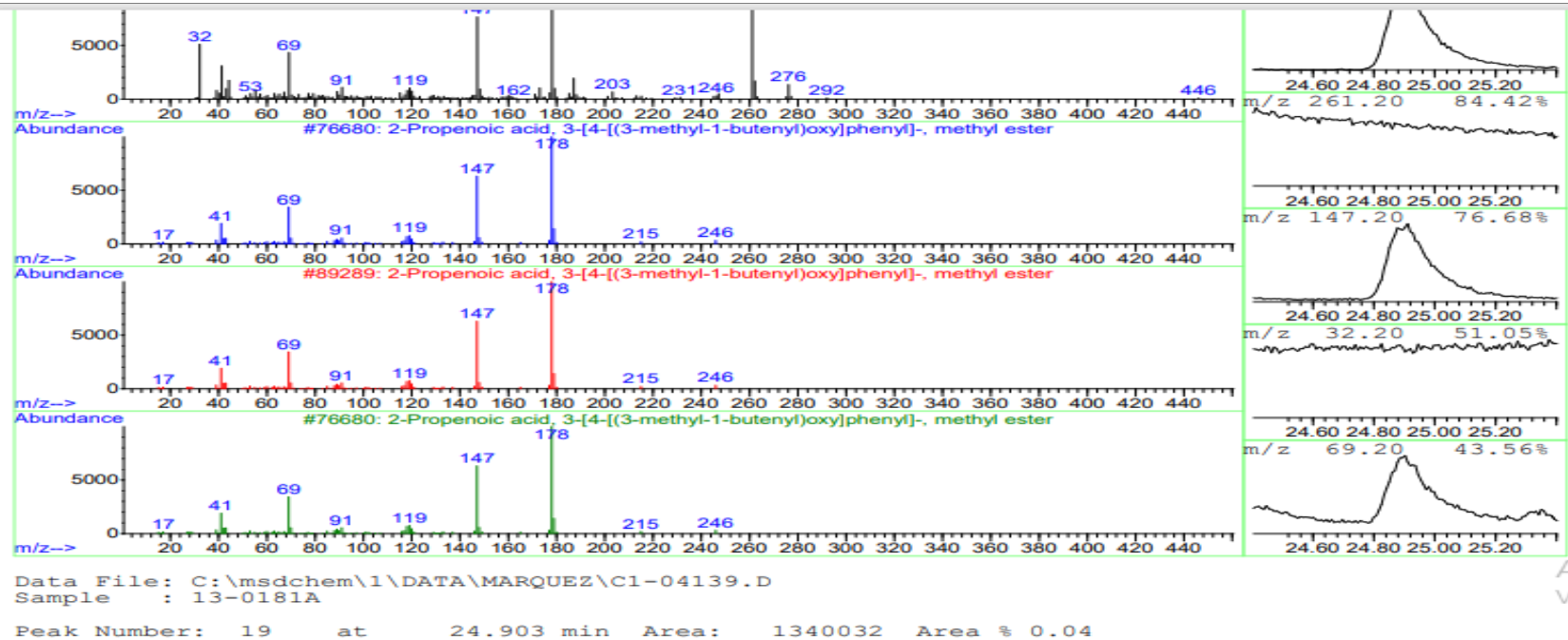
Dihydro-cis- α -copaene-8-ol



Data File: C:\msdchem\1\DATA\MARQUEZ\C1-04139.D
Sample : 13-0181A

Peak Number: 15 at 15.010 min Area: 9999104 Area % 0.26

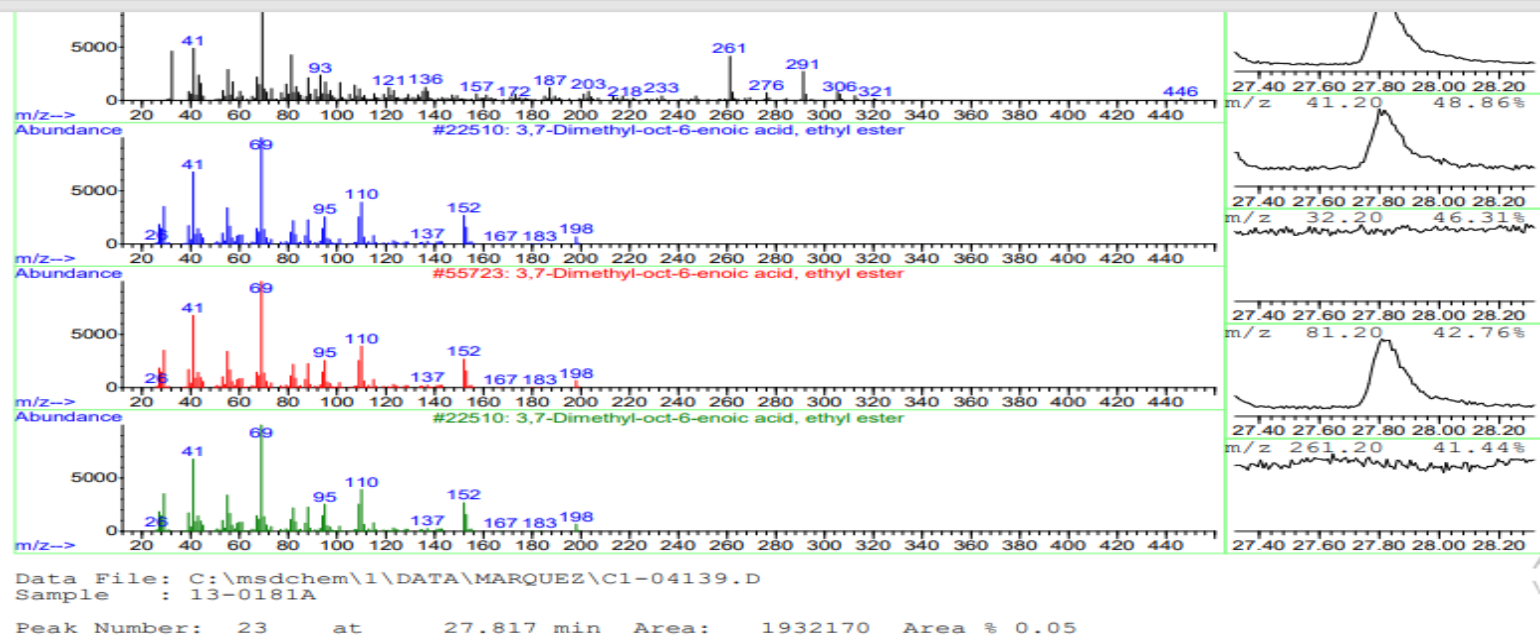
2-Propenoic acid, 3-[4-
[(3-methyl-1-butenyl)
oxy]phenyl]-, methyl
ester



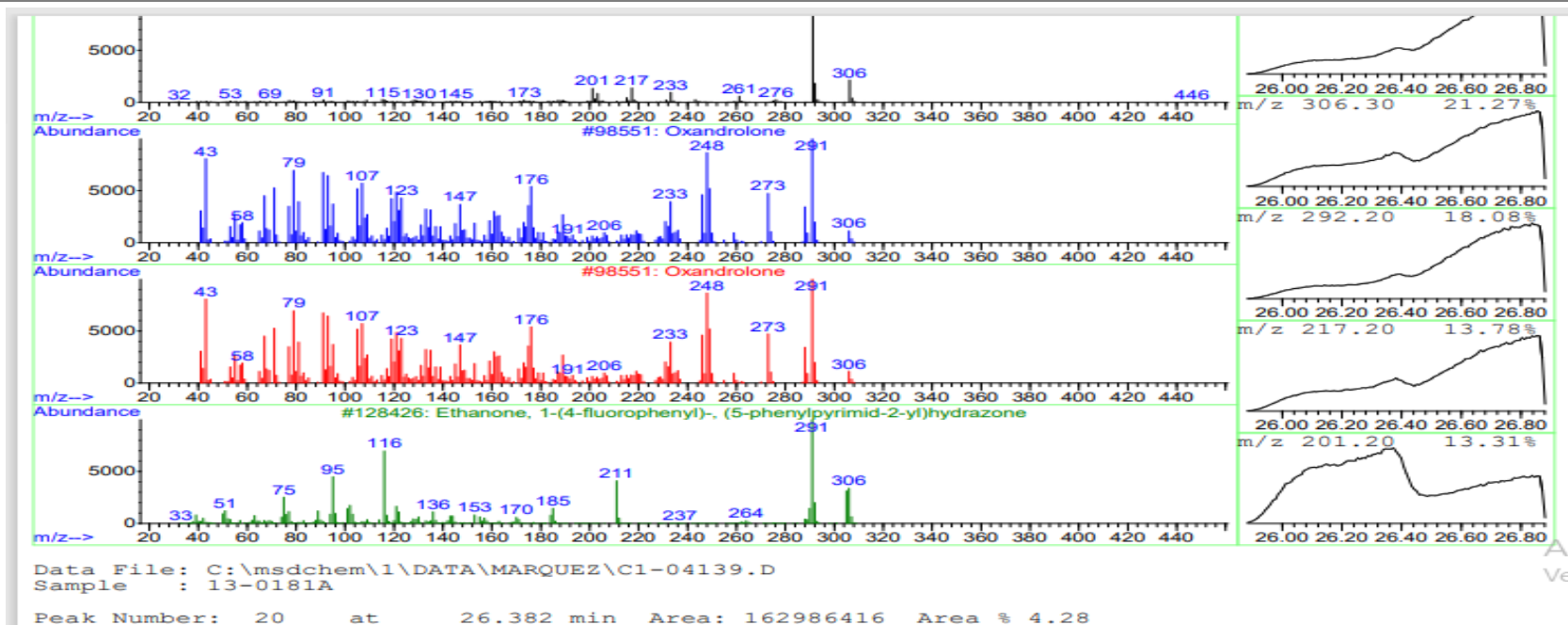
Squalene



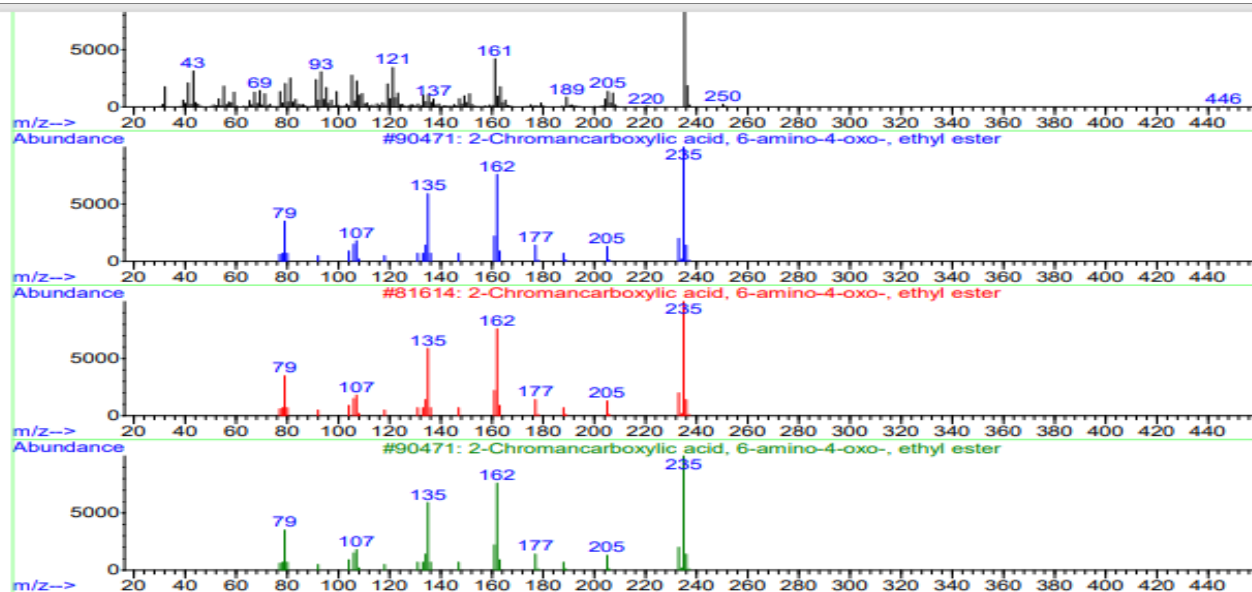
3,7-Dimethyl-oct-6-
enoic acid, ethyl ester



19-Hydroxy-13-
epimanoyl oxide

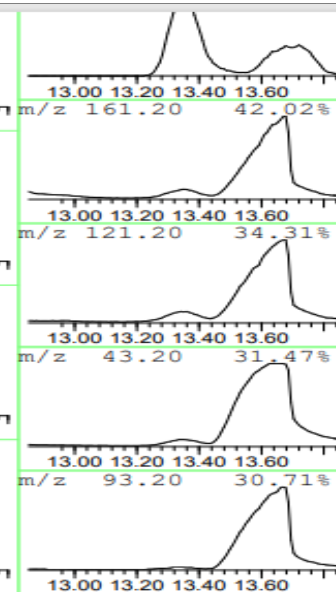


2-Chromancarboxylic
acid, 6-amino-4-oxo-,
ethyl ester



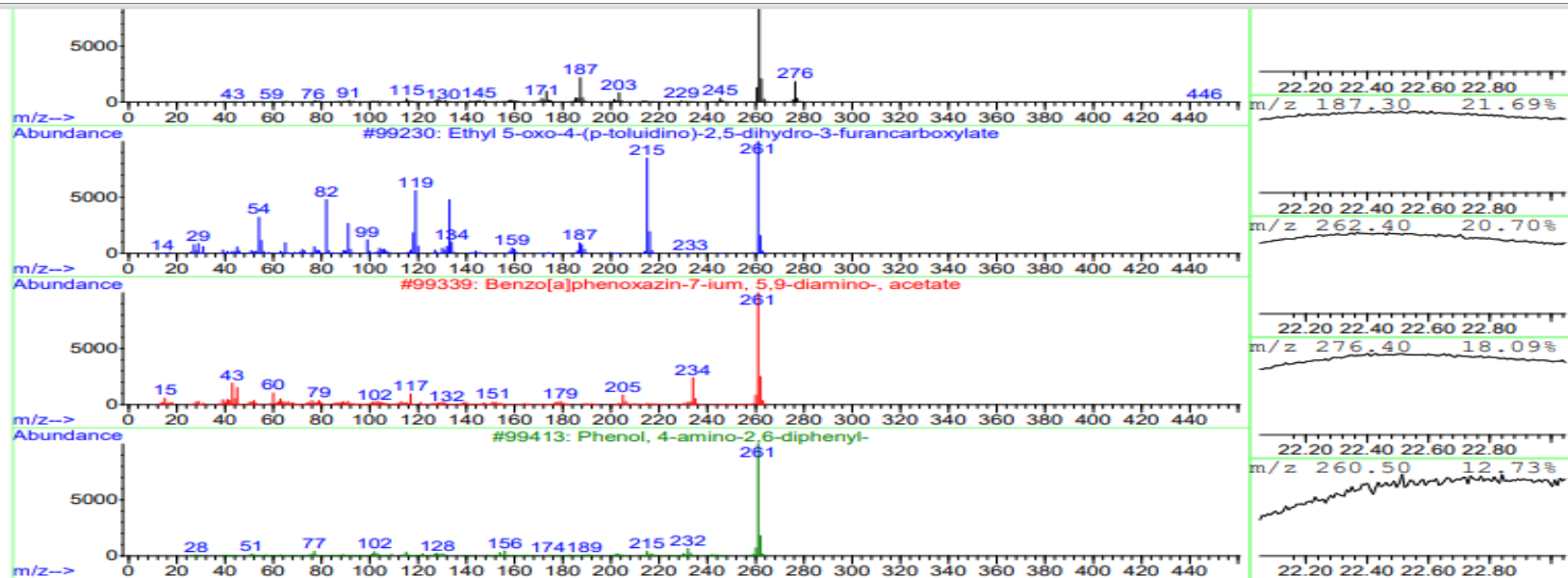
Data File: C:\msdchem\1\DATA\MARQUEZ\C1-04139.D
Sample : 13-0181A

Peak Number: 11 at 13.351 min Area: 9745117 Area % 0.26



A
V_c

Ethyl 5-oxo-4-(p-toluidino)-2,5-dihydro-3-furancarboxylate

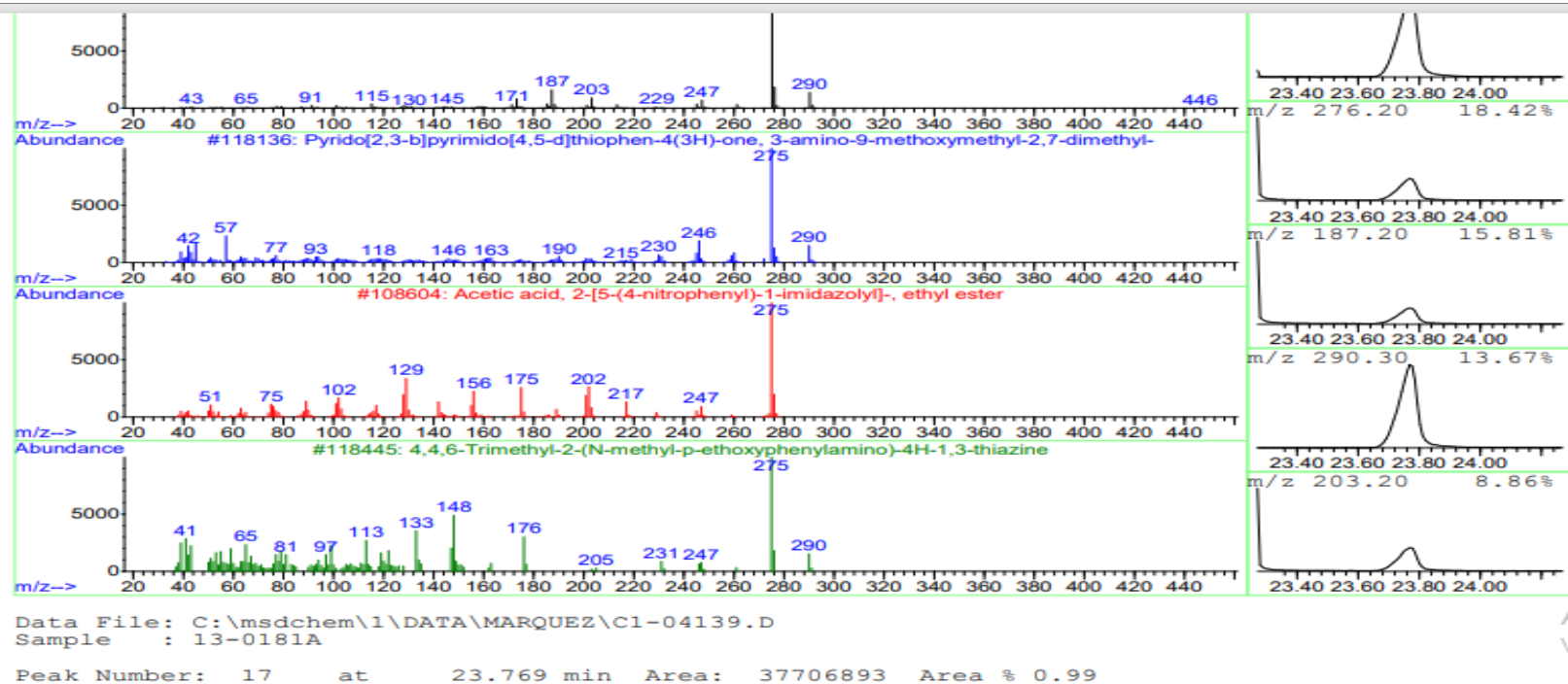


Data File: C:\msdchem\1\DATA\MARQUEZ\C1-04139.D
Sample : 13-0181A

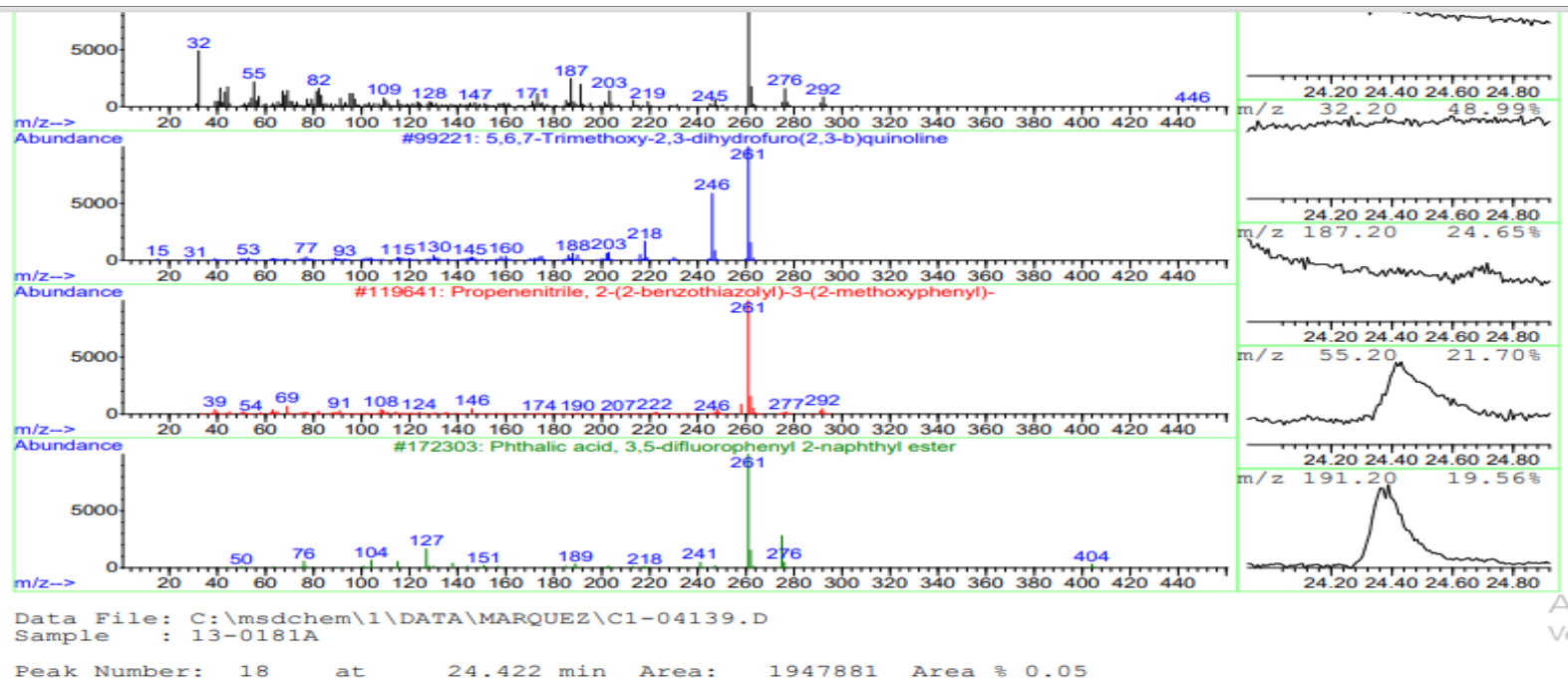
Peak Number: 16 at 22.548 min Area: 2807481355 Area % 73.70

A
Ve

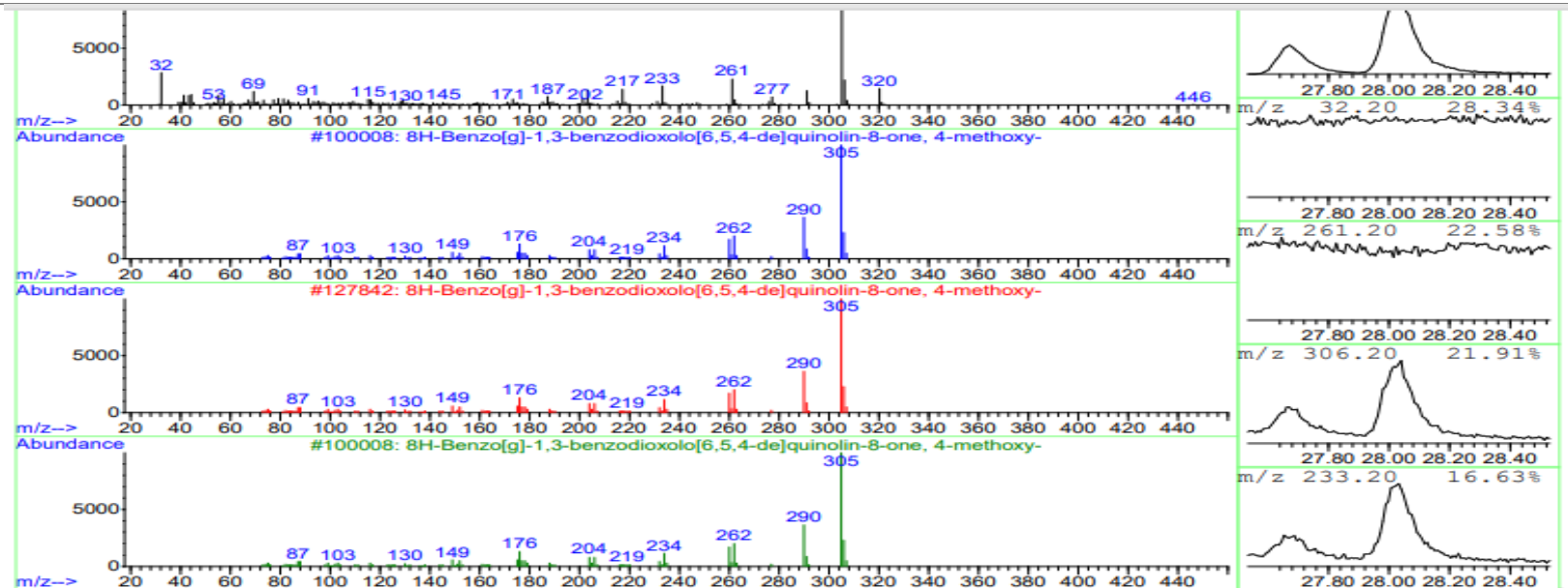
Pyrido[2,3-b]pyrimido[4,5-d]thiophen-4(3H)-one,
3-amino-9-methoxymethyl-2,7-dimethyl



5,6,7-Trimethoxy-2,3-dihydrofuro(2,3-b)quinoline



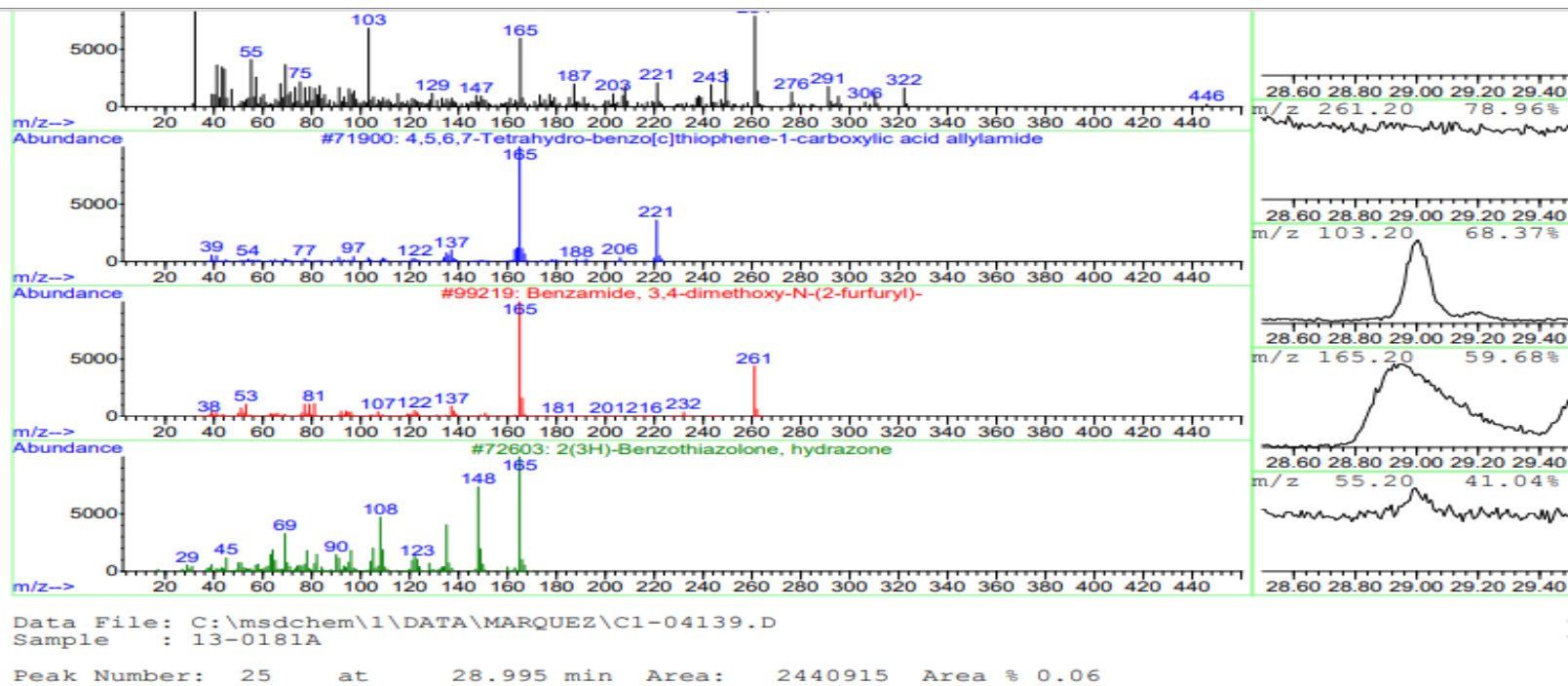
Atherospermidine



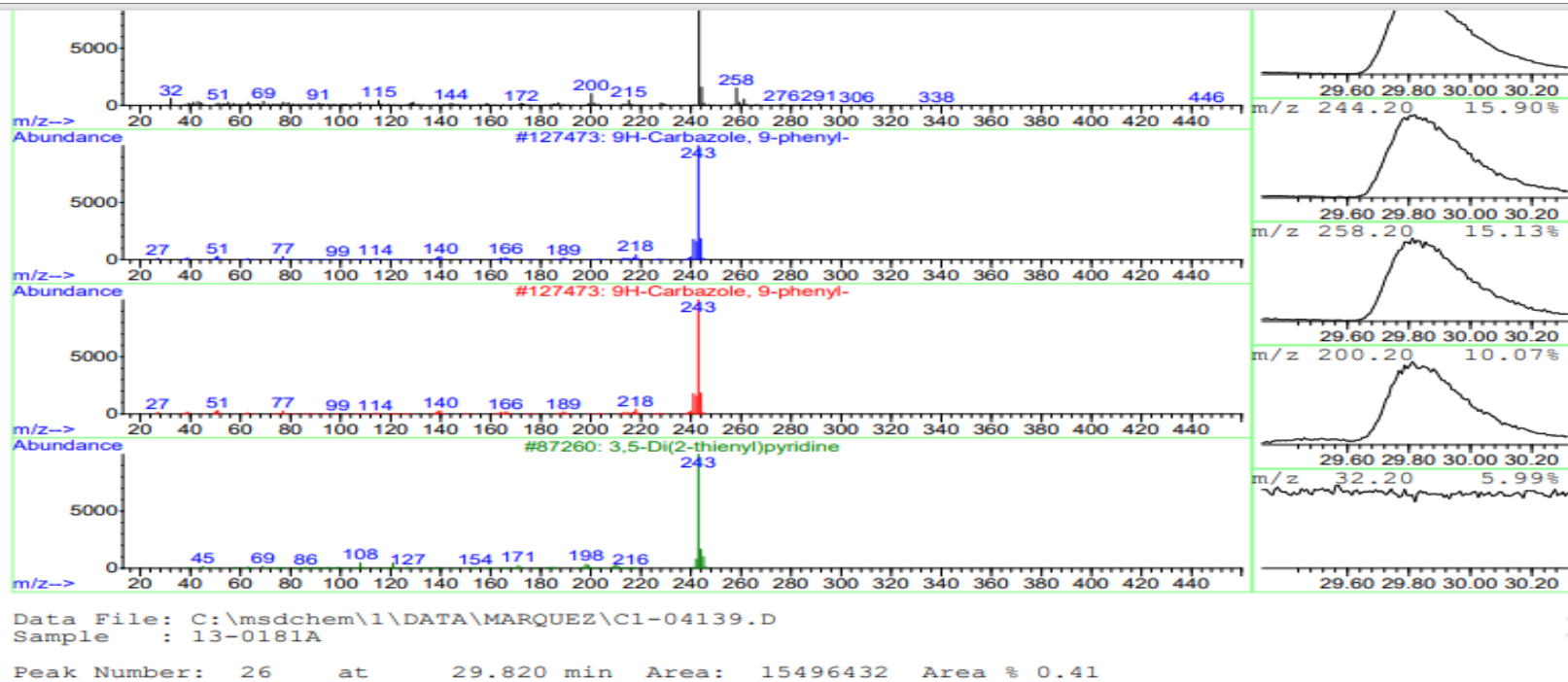
Data File: C:\msdchem\1\DATA\MARQUEZ\C1-04139.D
Sample : 13-0181A

Peak Number: 24 at 28.032 min Area: 1887311 Area % 0.05

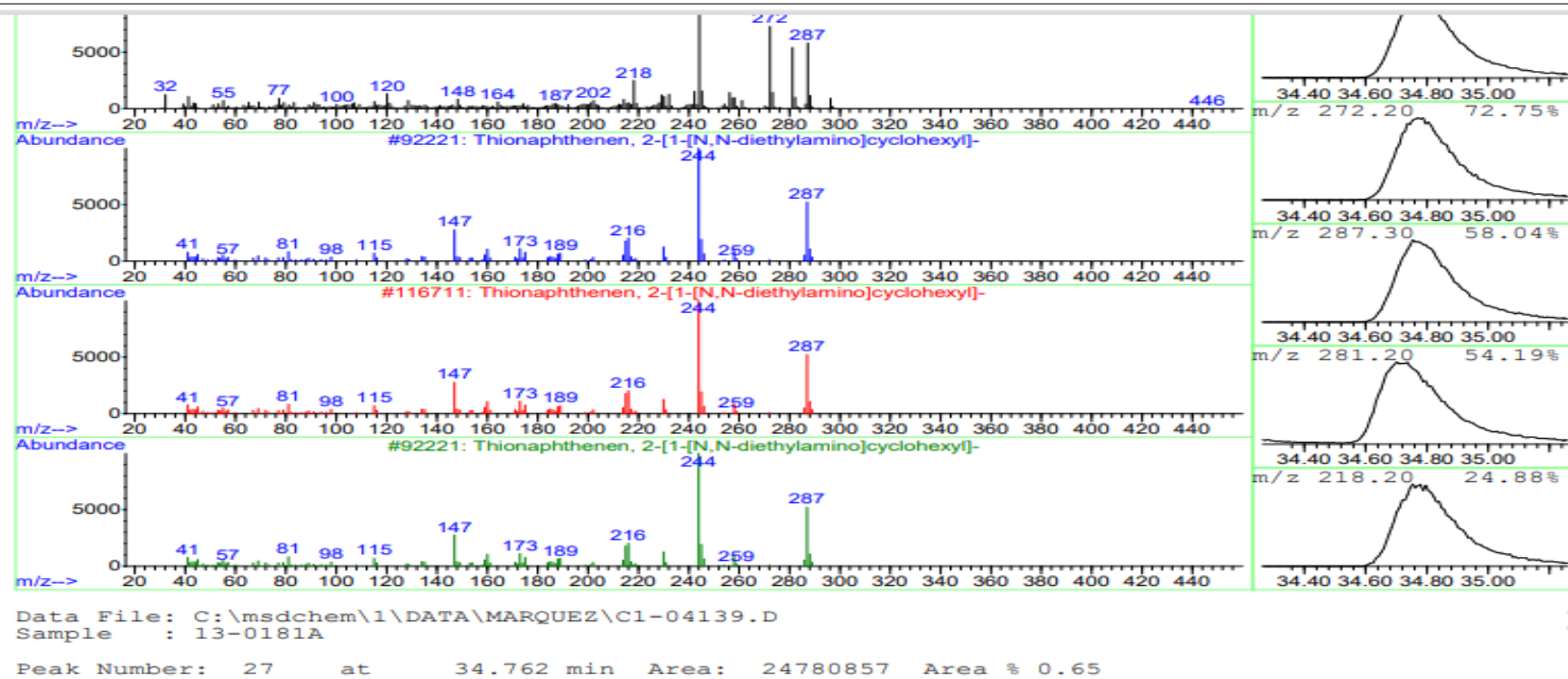
4,5,6,7-Tetrahydro-
benzo[c]thiophene-1-
carboxylic acid
allylamide



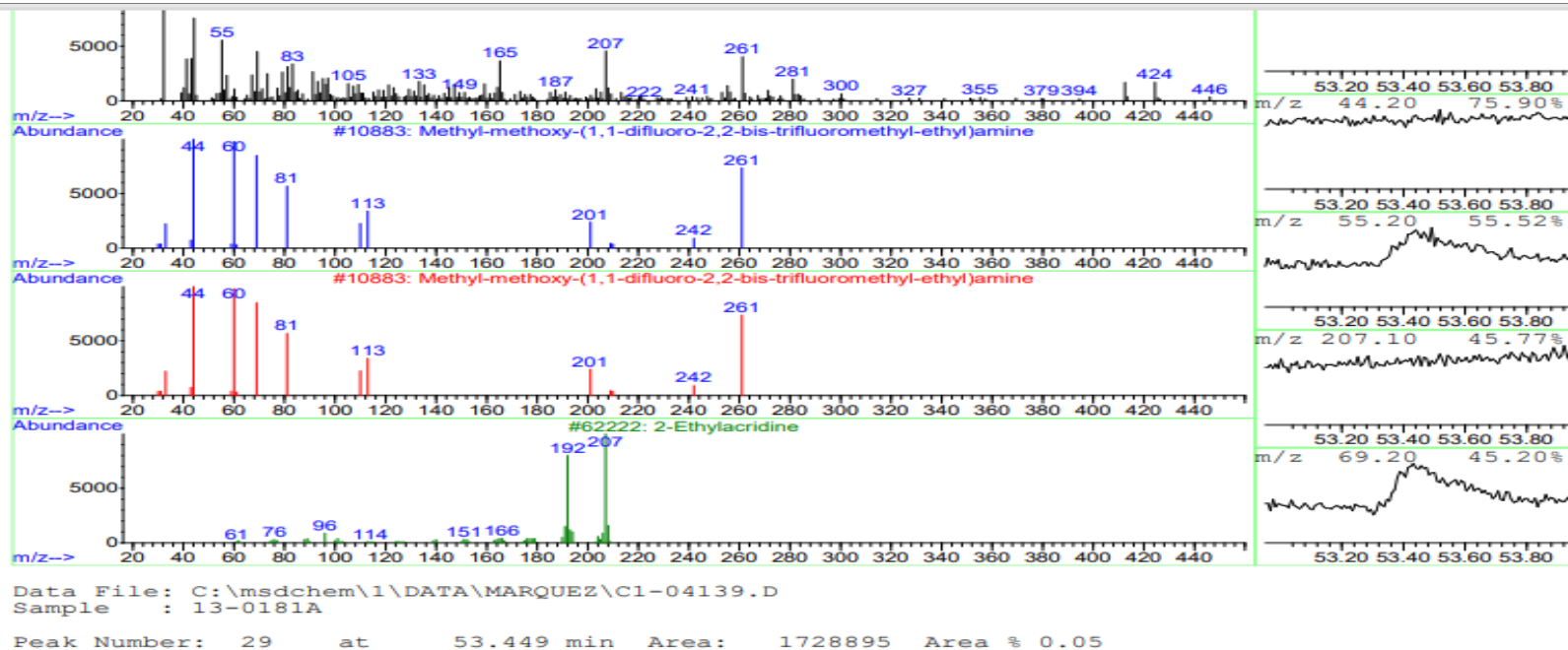
9-Phenylcarbazole



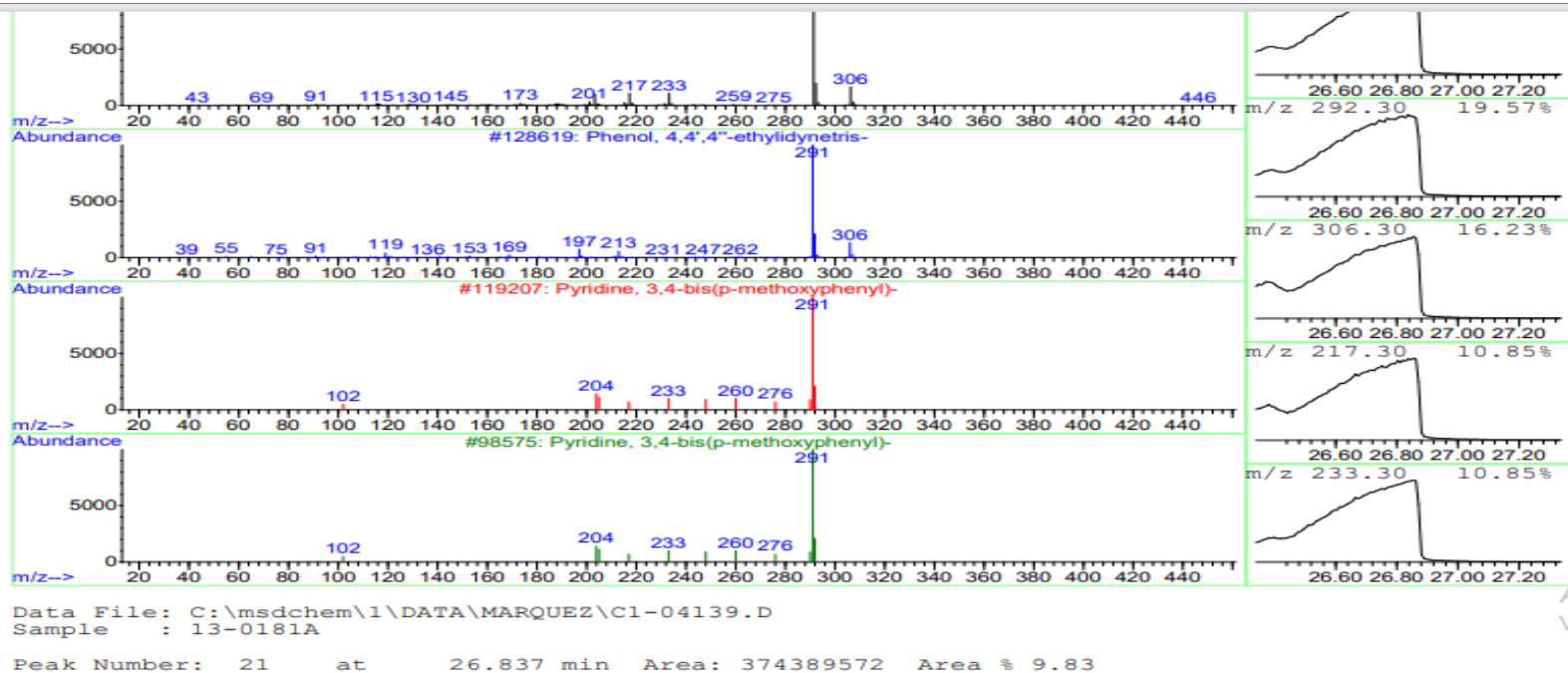
1-(1-Benzothien-2-yl)-
N,N-
diethylcyclohexanamine



Methyl-methoxy-(1,1-difluoro-2,2-bis-trifluoromethyl-ethyl)amine



Phenol, 4,4',4''-
ethylidynetris



Ethyl Oleate

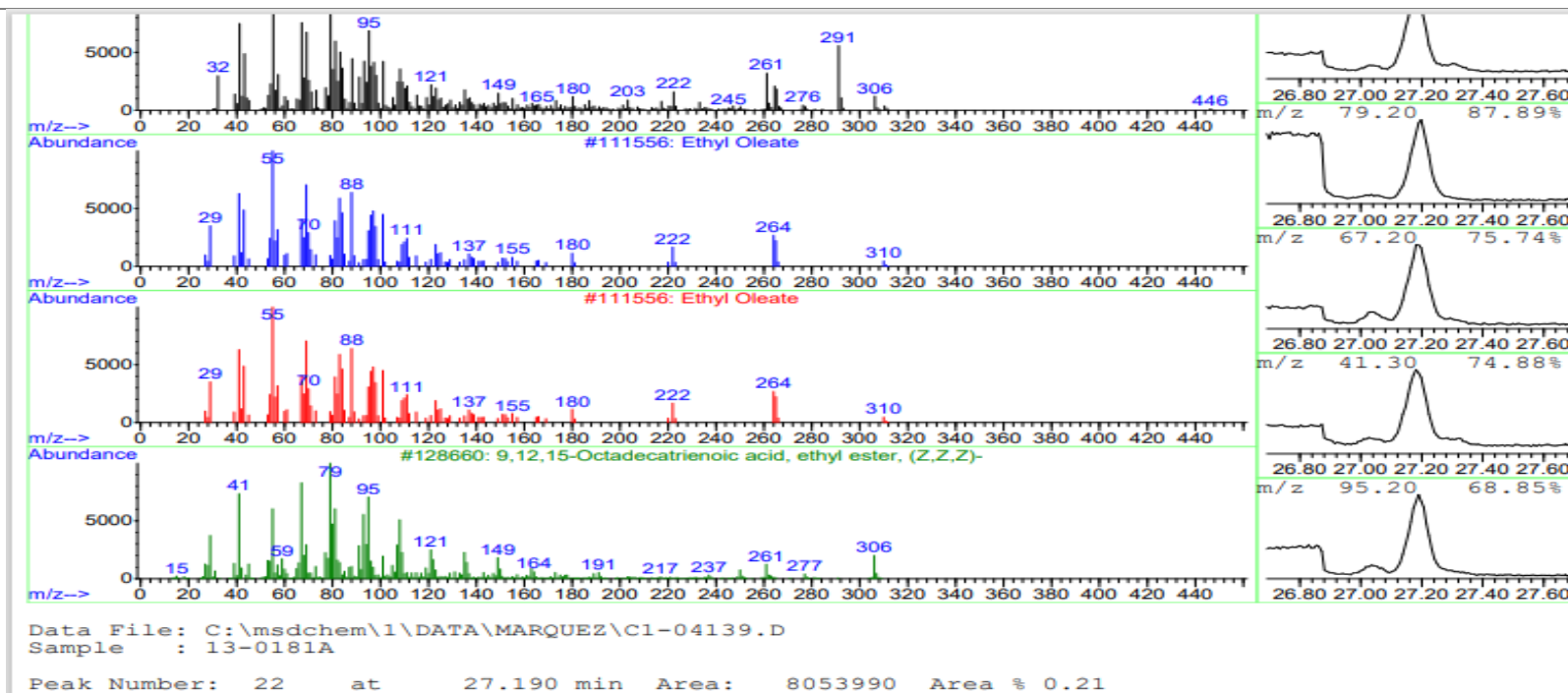


Figure S1. Fragmentation patterns of the mass spectra of the secondary metabolites present in the ethanolic extract of *M. Americana* bark