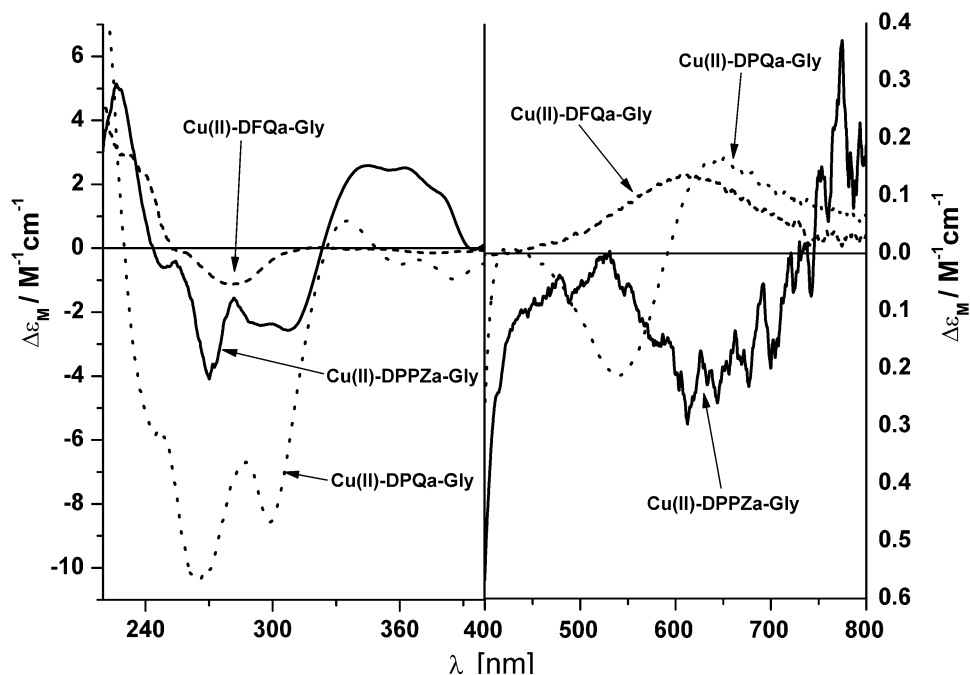
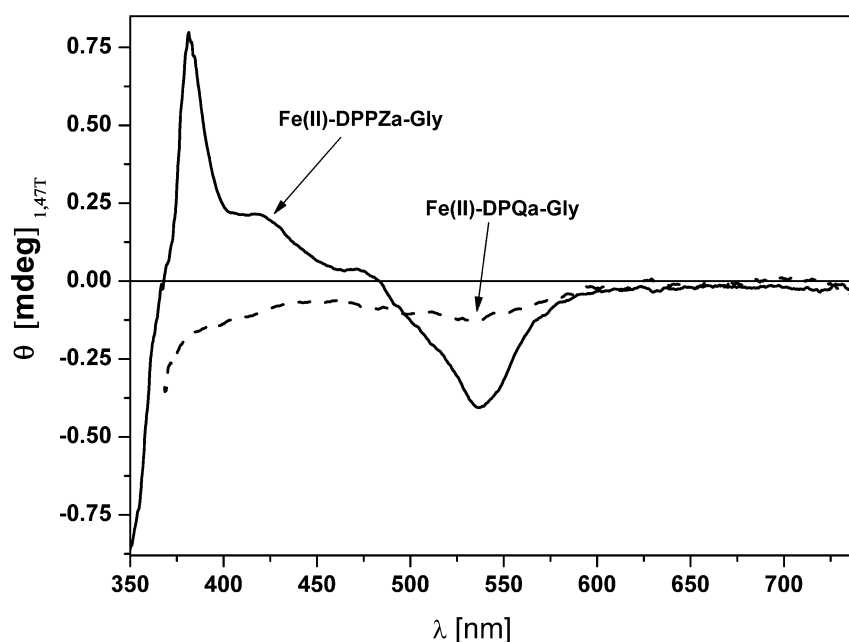


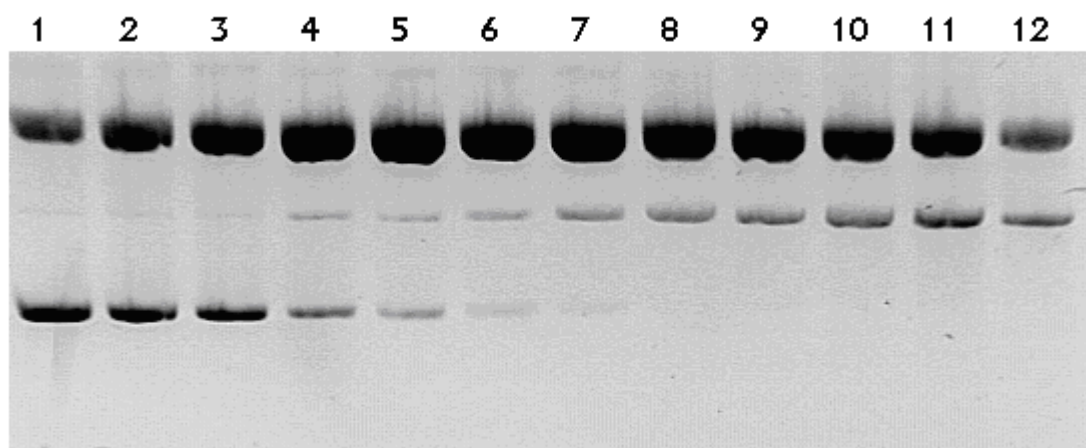
Supplementary material



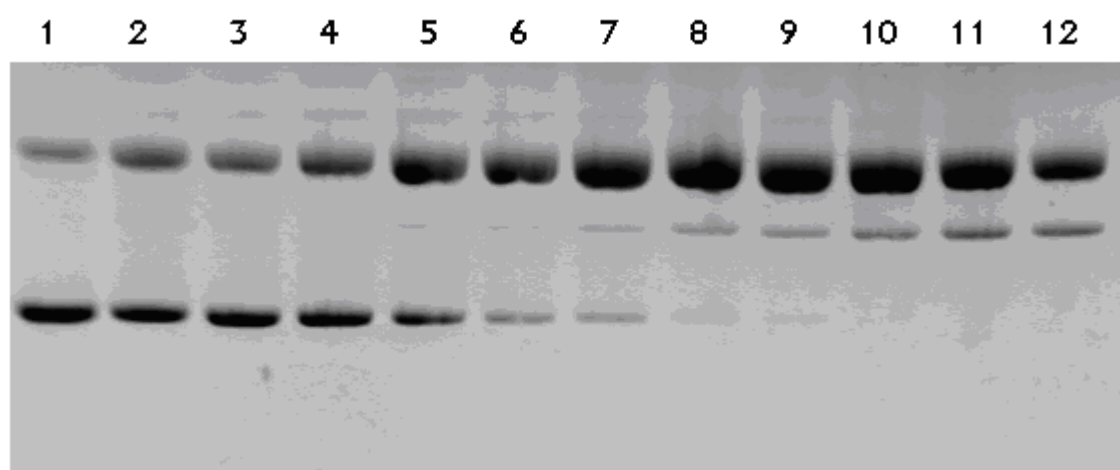
Supplementary Figure 1. Circular dichroism spectra of the Cu(II) complexes with DPPZa-Gly, DPQa-Gly and DFQa-Gly, concentration of metal 1 mM, metal-to-ligand molar ratio 1:2.



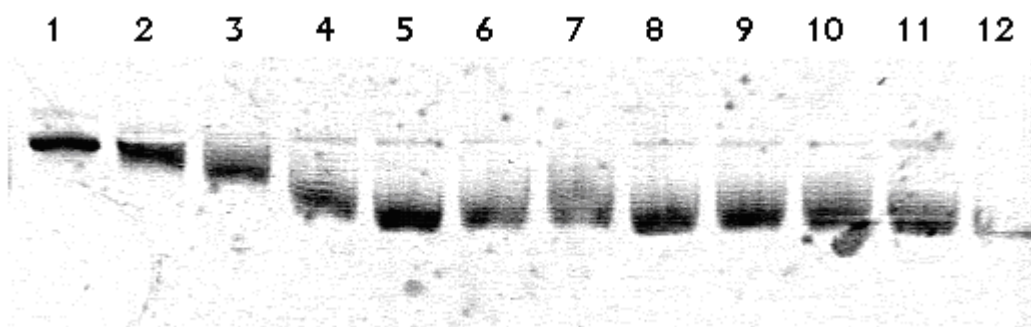
Supplementary Figure 2. Magnetic circular dichroism spectra of the Fe(II)-DPPZa-Gly and Fe(II)-DPQa-Gly complexes; concentration of metal 1 mM, metal-to-ligand molar ratio 1:3.



Supplementary Figure 3. Kinetics of the DNA cleavage in the presence of the Cu(II)-DFQa-Gly complex, accompanied by H₂O₂. Incubation periods: 0, 3, 5, 10, 20, 30, 45, 60, 75, 105, 135, and 180 min (lanes 1-12, respectively).



Supplementary Figure 4. Kinetics of the DNA cleavage in the presence of the Cu(II)-DPQa-Gly complex, accompanied by H₂O₂. Incubation periods: 0, 3, 5, 10, 20, 30, 45, 60, 75, 105, 135, and 180 min (lanes 1-12, respectively).



Supplementary Figure 5. Relative mobility of the plasmid DNA in the presence of DPPZa-Gly (lanes 1-6) and DPQa-Gly (lanes 7-12) at concentrations 5 mM, 1 mM, 500 μ M, 100 μ M, 50 μ M, and 5 μ M, respectively, for each compound.