

Supplementary Figure legends

Supplementary Figure 1. Characterization of synthesized wild type and mutant IpTx_a

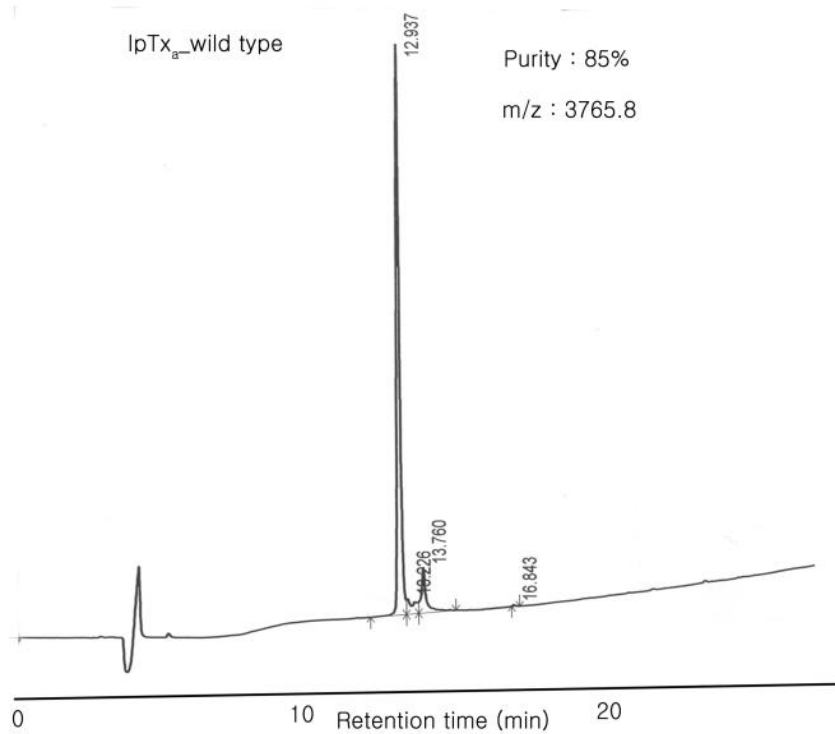
Purity of synthetic wild type and K22A mutant IpTx_a was determined by C18-reverse phase column chromatography. The synthetic peptides were eluted with a linear gradient of 5–65% acetonitrile in the presence of 0.1% trifluoroacetic acid as a solvent. The purity and mass to charge ratio (m/z) of the wild type (a) and the mutant IpTx_a, K22A (b) are shown.

Supplementary Figure 2. Coomassie blue stained HSR and purified RyR1.

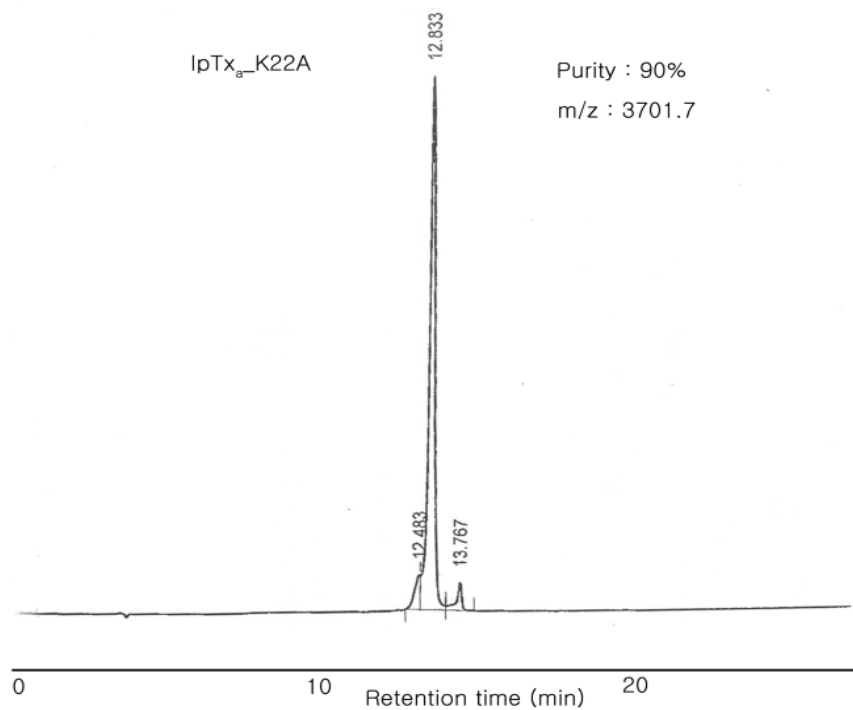
50 µg of rabbit skeletal HSR (lane 2) and 2.5 µg of purified RyR1 (lane 3) were separated by a 4–15% gradient SDS PAGE gel and the gel was stained with Coomassie blue. Molecular size markers are shown in lane 1. The high molecular weight RyR1 (~565 kDa) is shown by an arrowhead in lane 2 and 3.

Supplementary Figure 1.

(a)



(b)



Supplementary Figure 2.

