

## Supplementary Figures

In the supplementary material, we illustrate six phylogenetic trees reconstructed using duplicons within chimpanzee-specific, human-specific, and human/chimpanzee-shared CNVs/SDs.

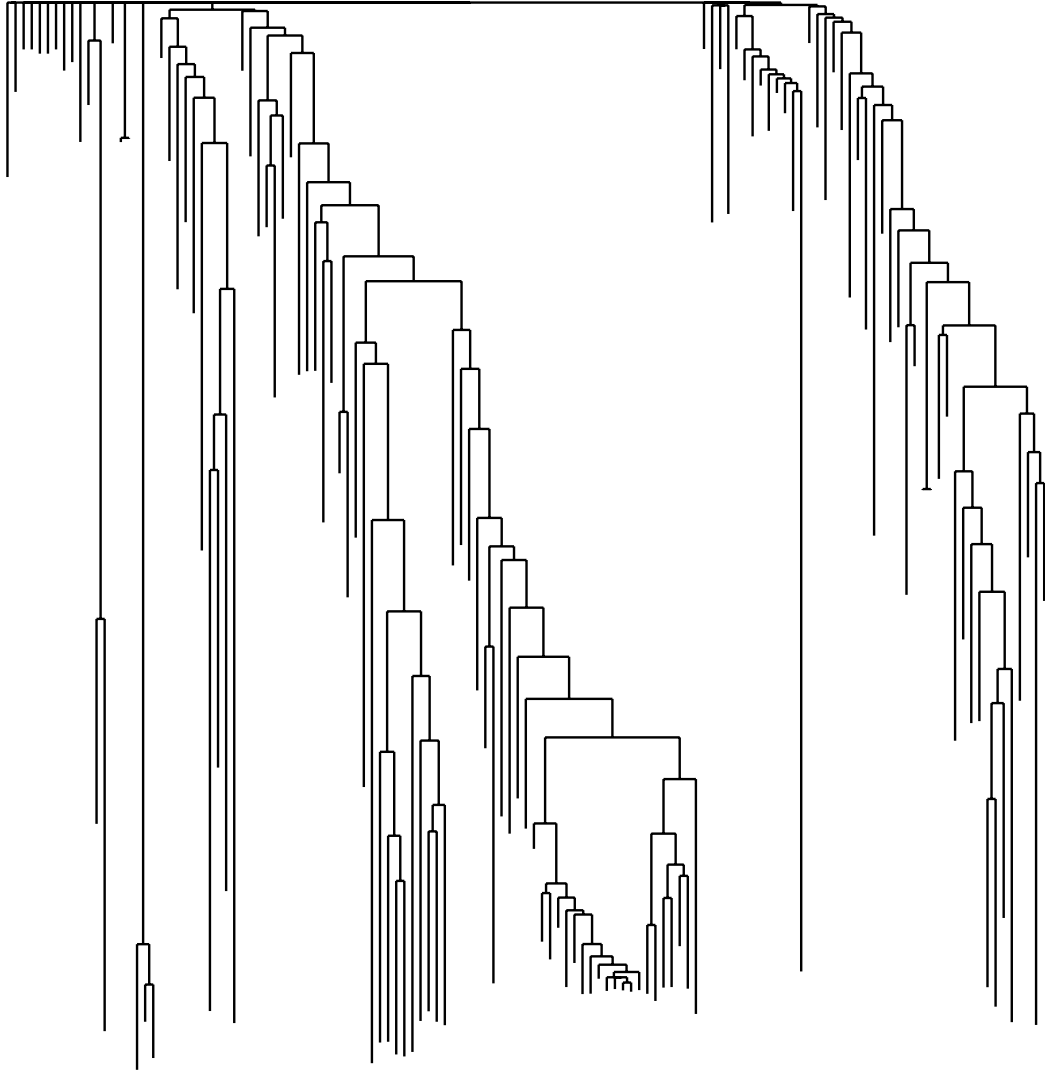


Figure 1: The phylogenetic tree of hierarchical clustering of duplicons for chimpanzee-specific SDs.

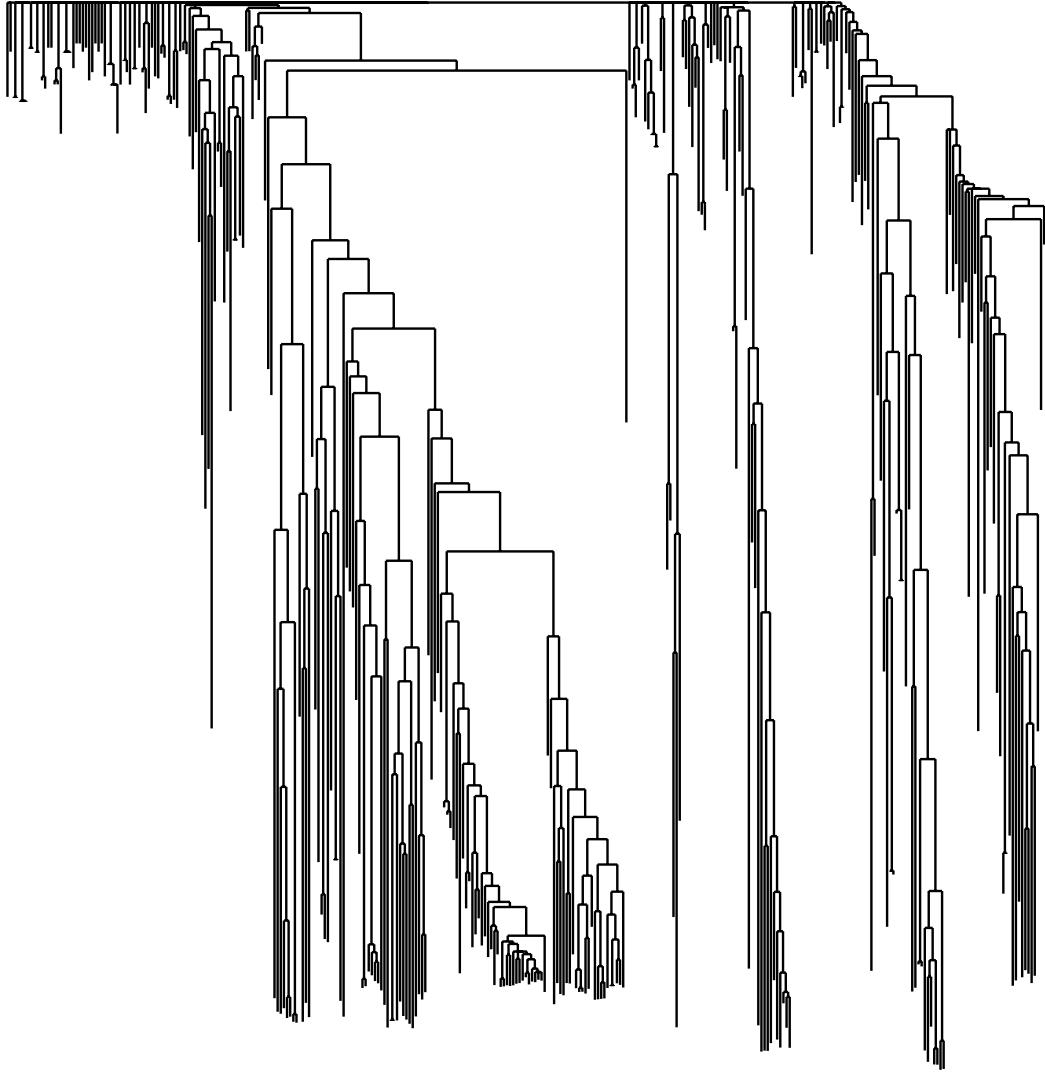


Figure 2: The phylogenetic tree of hierarchical clustering of duplicons for human-specific SDs.

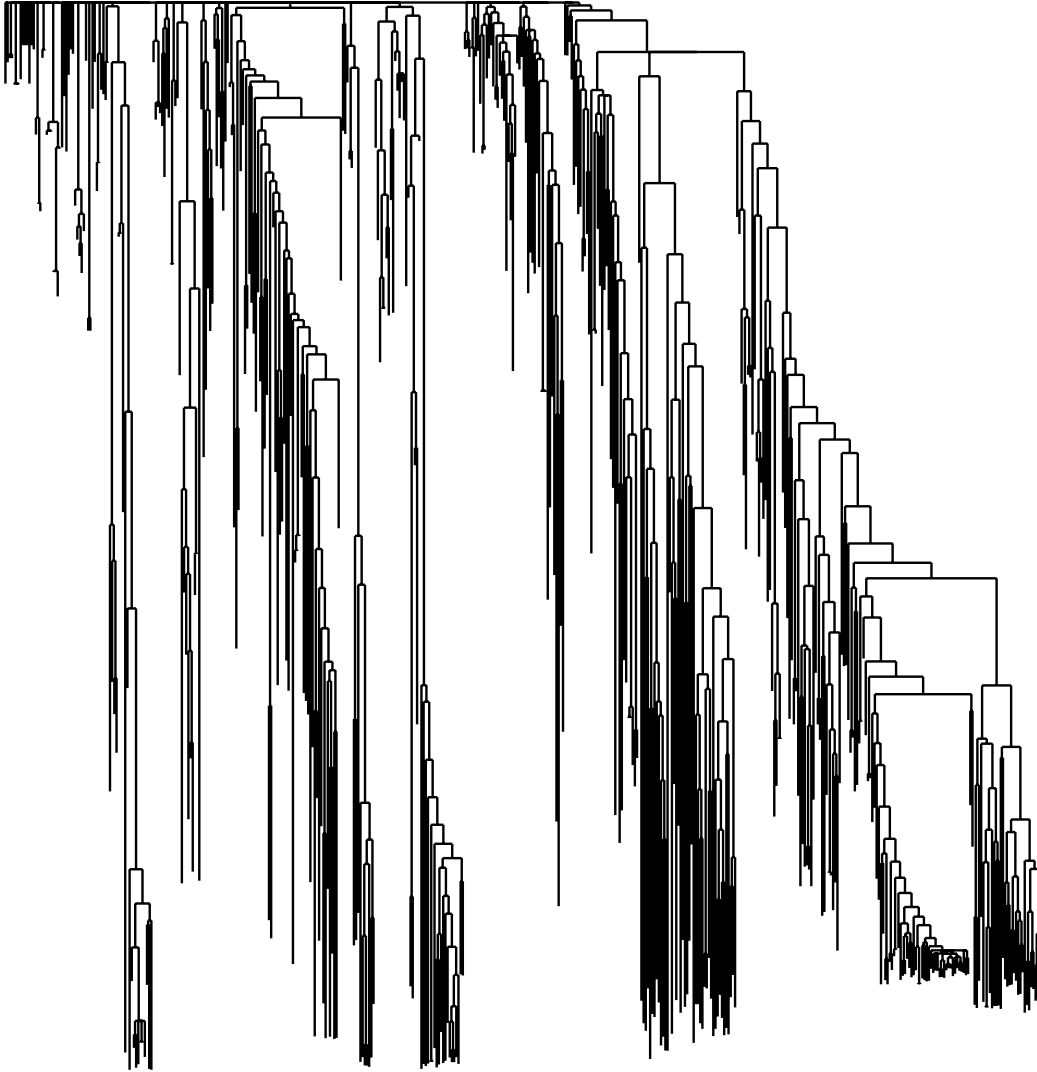


Figure 3: The phylogenetic tree of hierarchical clustering of duplicons for human/chimpanzee-shared SDs.

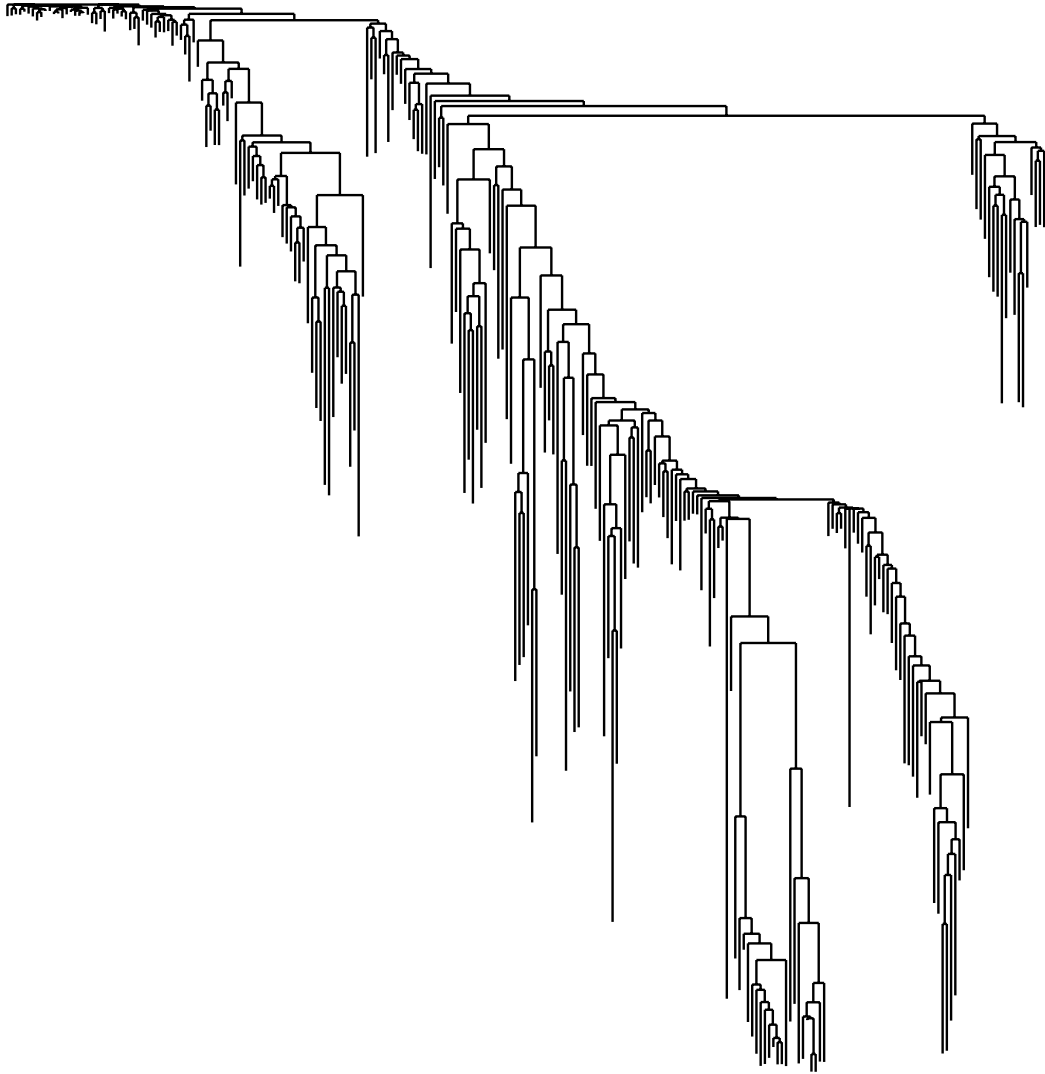


Figure 4: The phylogenetic tree of hierarchical clustering of duplicons for chimpanzee-specific CNVs.

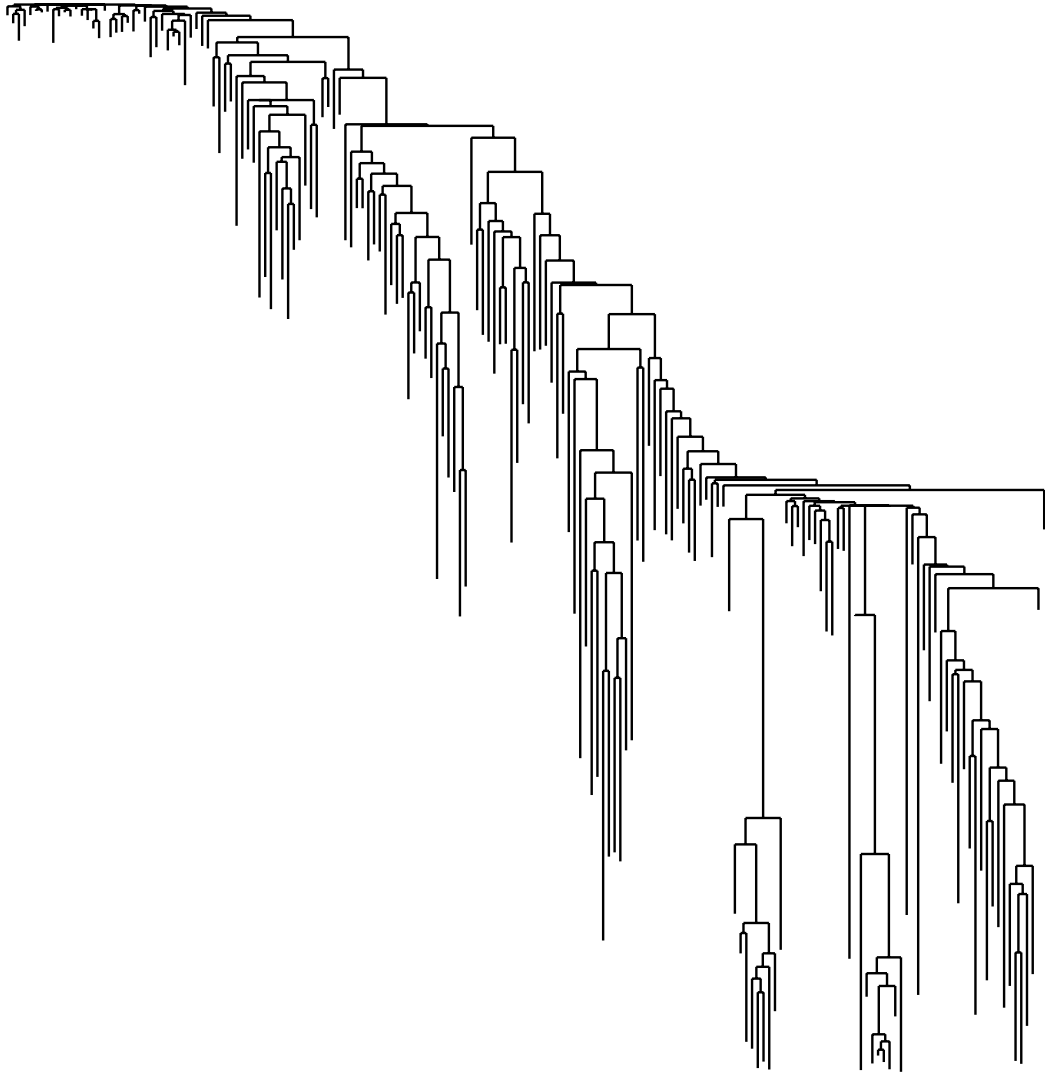


Figure 5: The phylogenetic tree of hierarchical clustering of duplicons for human-specific CNVs.

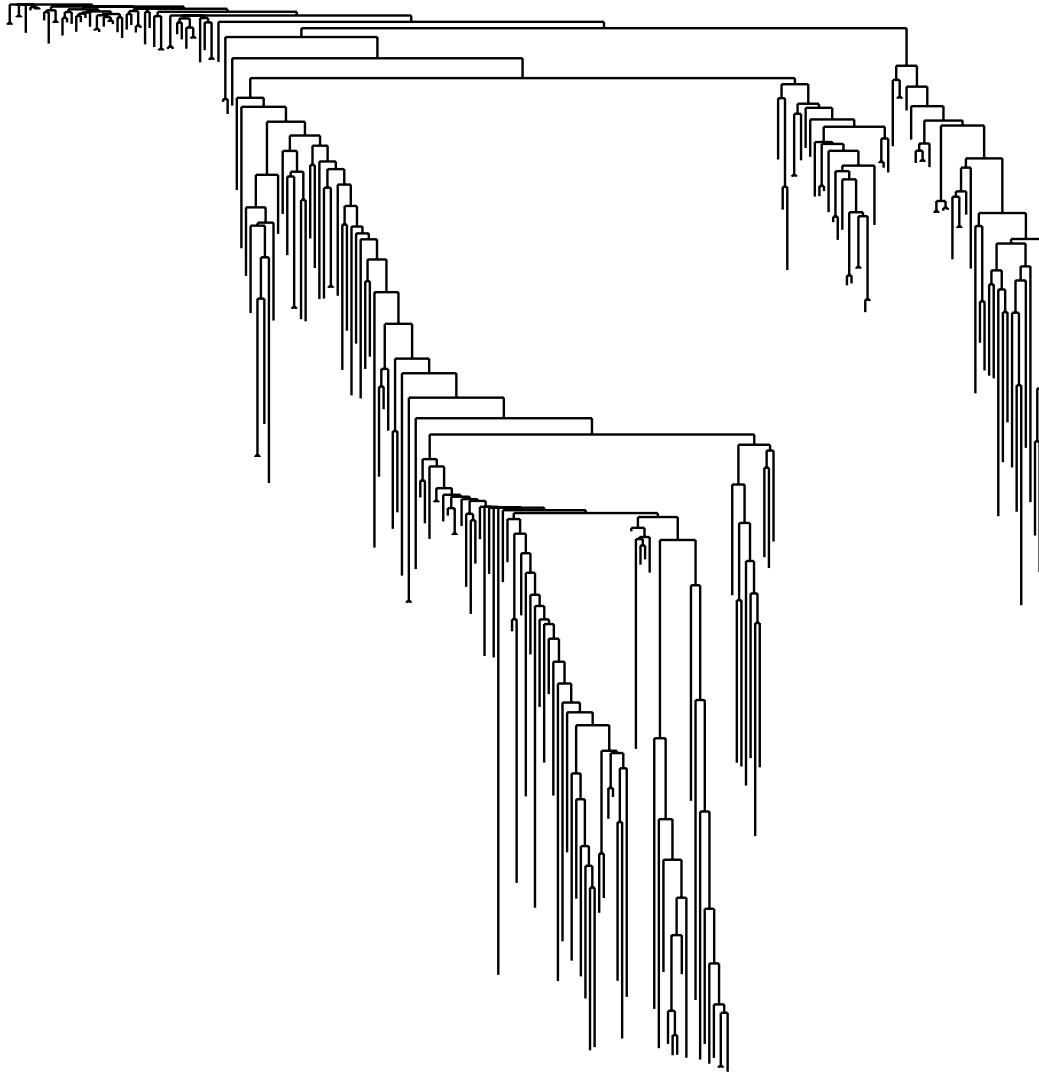


Figure 6: The phylogenetic tree of hierarchical clustering of duplicons for human/chimpanzee-shared CNVs.