

Research Article

Low-Dose-Area-Constrained Helical TomoTherapy-Based Whole Breast Radiotherapy and Dosimetric Comparison with Tangential Field-in-Field IMRT

Jie Qiu, Zhikai Liu, Bo Yang, Xiaorong Hou, and Fuquan Zhang

Peking Union Medical College Hospital, No. 1 Shuaifuyuan, Dongcheng District, Beijing 100730, China

Correspondence should be addressed to Fuquan Zhang; zhangfuquan3@sina.com

Received 15 June 2013; Accepted 11 July 2013

Academic Editor: An Liu

Copyright © 2013 Jie Qiu et al. This is an open access article distributed under the Creative Commons Attribution License, which permits unrestricted use, distribution, and reproduction in any medium, provided the original work is properly cited.

Background and Purpose. To present a novel helical TomoTherapy-based method for whole breast radiotherapy that has better dosimetry and also has acceptable low-dose regions for lungs, heart, and contralateral breast compared with tangential field-in-field IMRT (FIF-IMRT). **Material and Methods.** Ten patients with left-side breast cancer were planned with low-dose-area-constrained helical TomoTherapy (LDC-HT) and FIF-IMRT. Dosimetry was compared for all techniques. **Results.** Coverage of the whole breast was adequate with both techniques. Homogeneity index (HI) and conformity index (CI) were better with LDC-HT. LDC-HT showed dosimetry advantages over FIF-IMRT for ipsilateral lung and heart in not only high-dose levels but also in low-dose levels such as $V_{10\text{Gy}}$ and $V_{5\text{Gy}}$. For contralateral lung, both techniques can provide good protection, although the mean dose of LDC-HT is higher than that of FIF-IMRT. **Conclusions.** With LDC-HT, we obtained adequate target coverage, better HI and CI of target volume, better sparing of organs at risk, and acceptably low-dose areas compared with FIF-IMRT. LDC-HT could be a feasible method in whole breast radiotherapy. Clinical benefits of LDC-HT need further investigation.

1. Introduction

Adjuvant whole breast radiotherapy following breast conserving surgery is the standard of treatment for early-stage breast cancer because it improves local control rates over breast-conserving surgery alone [1]. The standard technique for whole breast irradiation has been the delivery of two tangential fields, an approach which has not significantly changed for many decades.

Tangential 3D-CRT and field-in-field IMRT (FIF-IMRT) are commonly used tangential techniques. FIF-IMRT for whole breast irradiation is based on a standard tangential beam arrangement, employing two directly opposed fields. Subfields are added using forward or inverse planning to even out volumes of high and low doses throughout the whole breast volume; subfields are not usually used to spare the organs at risk, that is, the heart and lungs. Compared with 3D-CRT, FIF-IMRT improves dose homogeneity in whole breast radiotherapy, which correlates with less acute skin and soft tissue toxicities and better cosmesis of the treated breast

in the long term [2]. But doses to heart and lungs are not significantly improved compared with 3D-CRT.

Multifield intensity-modulated radiotherapy (MF-IMRT) could achieve superior dose homogeneity and normal tissue sparing and has been applied to many tumors. It involves more complex beam arrangements and more beam angles than FIF-IMRT. High-dose regions of ipsilateral lung and heart for tumors of the left breast can be reduced compared with FIF-IMRT [3]. However, MF-IMRT is associated with an increased low-dose area, especially for organs not normally irradiated in conventional tangential radiotherapy, such as the contralateral lung and breast. Helical TomoTherapy (HT) delivers a kind of MF-IMRT. In HT treatment, a gantry continuously rotates around the patient while the patient is translated through the beam delivery plane. Hundreds of beamlets, created by passing a fan-beam through a high-speed binary collimator, can be delivered from any gantry angle. The use of all gantry angles might result in a large low-dose area in the body that would normally receive only scatter dose. The significance of this low-dose “bath” is unknown,

although it is the main concern regarding late oncogenesis. The purpose of this study is to provide a new method of helical TomoTherapy-based whole breast radiotherapy which minimizes the low-dose area.

2. Patients and Methods

2.1. Patients and Planning Images. In this study, the sample comprised 10 left-side breast cancer patients treated with breast conserving surgery and whole breast radiotherapy at Peking Union Medical College Hospital, China, in 2011-2012. All patients underwent 5 mm slice thickness computer tomography (CT) scanning in the supine position on an inclined breast board with both arms abducted above the head. Images were acquired from the lower part of neck to 5 cm below the lowest part of the breast, with radiopaque wires marking the clinically detectable ipsilateral breast borders.

2.2. Treatment Volumes and Organs at Risk. The clinical target volume (CTV) was the whole ipsilateral breast delimited within the radiopaque wires. The planning target volume (PTV) was generated by adding an 8 mm margin round CTV to allow for respiratory motion and setup errors but confined to the interior of the body outer contours reduced by 5 mm. Organs at risk (OARs) contoured were both lungs, heart, and contralateral breast.

2.3. Dose Goals. The prescribed dose fractionation for the whole breast was 46 Gy in 2 Gy daily fractions over 4-5 weeks. We required that 95% of PTV receive 95% to 105% of the prescribed dose. The treatment volume receiving more than 107% of the prescribed dose should be less than 1%. The volume of ipsilateral lung receiving more than 40 Gy ($V_{40\text{Gy}}$), 30 Gy ($V_{30\text{Gy}}$), 20 Gy ($V_{20\text{Gy}}$), and 5 Gy ($V_{5\text{Gy}}$) should be as low as possible. The volume of heart receiving more than 30 Gy ($V_{30\text{Gy}}$) and that of the contralateral lung receiving more than 5 Gy ($V_{5\text{Gy}}$) were also minimized.

2.4. FIF-IMRT Planning. FIF-IMRT plans were also created with Eclipse version 8.0 treatment planning software. FIF-IMRT plans used the same energies and beam angles as 3D-CRT plans. Inverse planning was used to minimize the volume receiving higher than 107% of the prescribed dose.

2.5. HT Planning. HT plans were created with TomoTherapy treatment planning software. HT plans were delivered with 6MV X-rays. HT plan parameters consisted of a 2.5 cm field width (FW), 0.287 pitch, and a modulation factor (MF) of 3.0.

A new support organ was defined for each patient as follows. A tangential line were drawn at the posterior border of traditional 3D-CRT beam, and the ipsilateral lung and heart below this line were defined as a new structure "block 1." The structure "block 1" was designated as "completely blocked." Contralateral lung and contralateral breast were designated as "directionally blocked."

2.6. Data and Statistical Analysis. Dosimetric data was extracted from each planning system. Student's *t*-tests were used to compare data between LDC-HT and FIF-IMRT. Differences were considered significant for $P < 0.05$.

3. Results

3.1. Patient Characteristics. Ten patients with left-sided breast cancer were selected for this study. PTV size varied from 424 cm³ to 885 cm³, with a mean of 630 cm³ and a median of 650 cm³. PTV and organs at risk (OARs) cumulative dose volume histograms (DVHs) and isodose distributions for a typical left-sided breast plan are illustrated in Figure 1.

3.2. Target Volume. The average dosimetric characteristics of the target for both techniques were presented in Table 1. Target coverage was adequate in all patients for both LDC-HT and FIF-IMRT. Mean volumes receiving at least 95% of prescribed dose for both techniques were similar (98.73% versus 98.53%; $P = 0.392$). Mean $V_{110\%}$ seemed better for LDC-HT than FIF-IMRT but not significantly (0.7% versus 15.68%; $P = 0.056$). Mean target doses were significantly lower for LDC-HT (48.28 Gy versus 49.18 Gy; $P = 0.002$), but maximum doses were not different (51.47 Gy versus 51.36 Gy; $P = 0.667$). Homogeneity index (1.08 versus 1.10; $P = 0.001$) and conformity index (0.83 versus 0.76; $P = 0.023$) were better for LDC-HT than FIF-IMRT.

3.3. Organs at Risk (OARs). The average dosimetric characteristics of the organs at risk for both techniques were presented in Table 2. LDC-HT provided significant decreases in $V_{5\text{Gy}}$ (28% relative decrease), $V_{10\text{Gy}}$ (30% decrease), $V_{20\text{Gy}}$ (35% decrease), $V_{30\text{Gy}}$ (46% decrease), $V_{40\text{Gy}}$ (61% decrease), and mean dose (32% decrease) for ipsilateral lung. Similar results were obtained for both lungs combined. Both techniques provided very low doses to the heart, but LDC-HT was better for the heart $V_{5\text{Gy}}$ (57% relative decrease), $V_{10\text{Gy}}$ (59% decrease), $V_{20\text{Gy}}$ (71% decrease), $V_{30\text{Gy}}$ (82% decrease), $V_{40\text{Gy}}$ (91% decrease), and mean dose (45% decrease). Both techniques yielded very low doses to the contralateral lung and contralateral breast with maximum doses less than 5 Gy. However, FIF-IMRT resulted in lower maximum and mean doses for both contralateral lung and contralateral breast.

3.4. Treatment Time. Average treatment time for LDC-HT was 718.5 s (range: 635.7–835.4 s). The treatment time did not account for the patient setup and MVCT scan time. We estimated the total treatment time per patient to be approximately 20–25 min for LDC-HT. The average beam on time for FIF-IMRT was 357.6 s (range: 309.0–391.0 s). We thus estimated the total treatment time per patient to be 12–15 min for FIF-IMRT.

4. Discussion

Whole breast radiotherapy with boost following breast-conserving surgery is the standard of care for early-stage breast cancer patients. The 2-year local control rate could

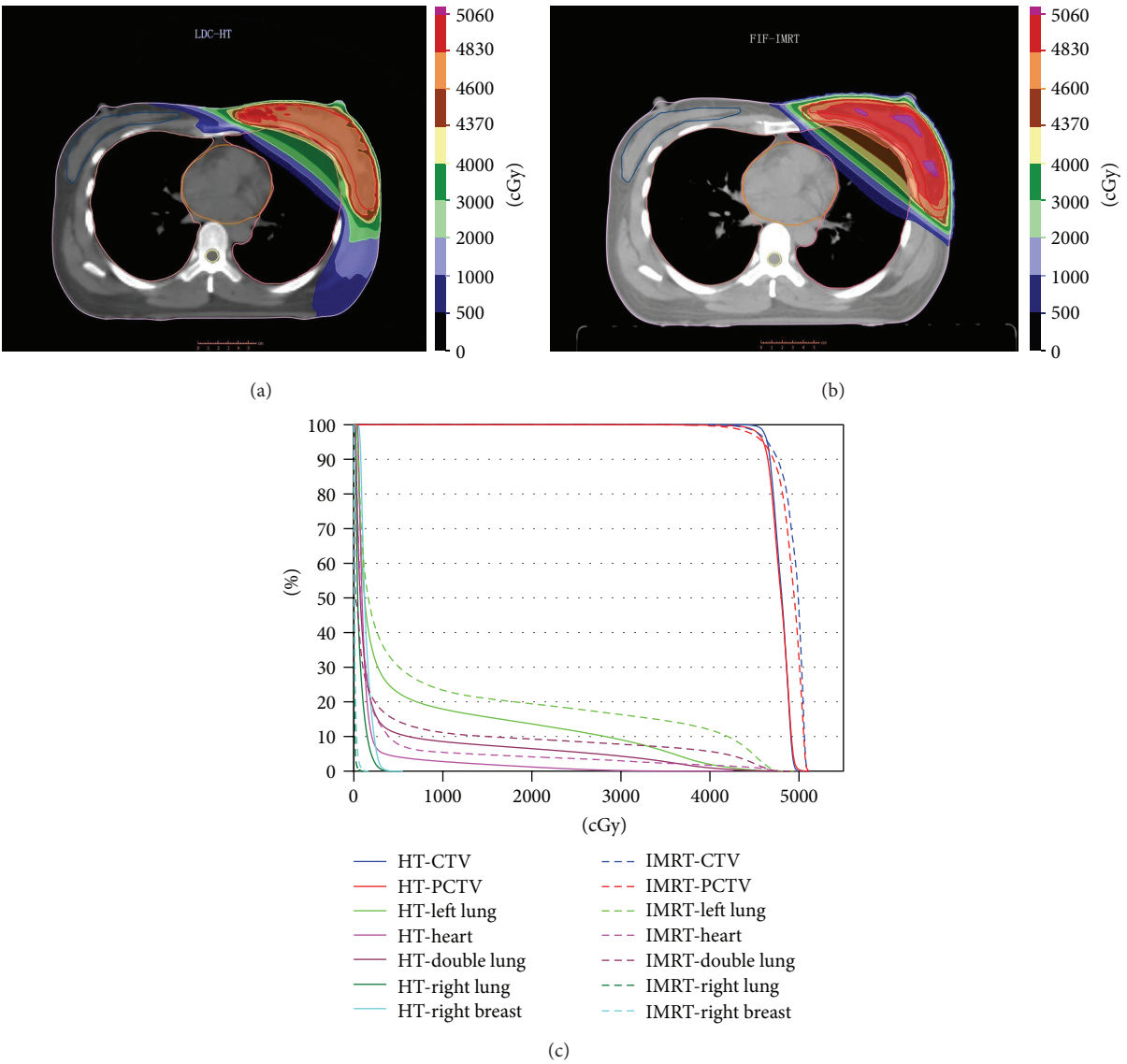


FIGURE 1: Isodose and cumulative DVHs for each technique.

TABLE 1: Average dosimetric characteristics of the target.

	LDC-HT	FIF-IMRT	P value
PTV (prescribed dose: 46 Gy)			
$V_{50.6\text{ Gy}}$ or $V_{110\%}$	0.7%	15.68%	0.056
$V_{43.7\text{ Gy}}$ or $V_{95\%}$	98.73%	98.53%	0.392
Mean dose (Gy)	48.28	49.18	0.002
Maximum dose (Gy)	51.47	51.36	0.667
Homogeneity index	1.08	1.10	0.001
Conformity index	0.83	0.76	0.023

be higher than 90% [4]. And radiotherapy reduced the 10-year risk of any (i.e., locoregional or distant) first recurrence from 35.0% to 19.3% [5]. The main concern of whole breast

radiotherapy now is the reduction of patient toxicity. The tangential technique for whole breast radiotherapy has not significantly changed over many decades. FIF-IMRT in this study is a type of tangential technique. FIF-IMRT could reduce maximum target doses relative to 3D-CRT.

Multifield IMRT (MF-IMRT) has been widely used for the treatment of head-and-neck and pelvic tumors. For whole breast radiotherapy, MF-IMRT could improve dose homogeneity and reduce high-dose areas of ipsilateral lung and heart (for left-side tumors) [6–9]. However, it may result in large low-dose regions in lungs, contralateral breast, and heart that might cause late oncogenesis [10]. Helical TomoTherapy is a new radiation technology that can provide even better dosimetry than MF-IMRT by allowing radiation to be delivered from all gantry angles. But the low-dose region may spread even wider with HT.

TABLE 2: Average dosimetric characteristics of the organs at risk.

	LDC-HT	FIF-IMRT	P value
Ipsilateral lung			
$V_{5\text{ Gy}}$	21.04	29.16	0.000
$V_{10\text{ Gy}}$	15.31	21.98	0.000
$V_{20\text{ Gy}}$	11.58	17.68	0.000
$V_{30\text{ Gy}}$	7.95	14.65	0.000
$V_{40\text{ Gy}}$	3.84	9.97	0.000
Mean dose (Gy)	6.12	9.02	0.000
Maximum dose (Gy)	49.98	49.12	0.069
Heart			
$V_{5\text{ Gy}}$	4.19	9.73	0.000
$V_{10\text{ Gy}}$	2.75	6.67	0.000
$V_{20\text{ Gy}}$	1.45	4.96	0.000
$V_{30\text{ Gy}}$	0.67	3.73	0.000
$V_{40\text{ Gy}}$	0.20	2.38	0.001
Mean dose (Gy)	1.87	3.37	0.000
Maximum dose (Gy)	42.71	48.33	0.020
Contralateral lung			
Mean dose (Gy)	0.51	0.09	0.000
Maximum dose (Gy)	4.33	1.63	0.000
Both lungs			
$V_{5\text{ Gy}}$	9.79	13.59	0.000
$V_{10\text{ Gy}}$	7.44	10.26	0.000
$V_{20\text{ Gy}}$	5.41	8.24	0.000
$V_{30\text{ Gy}}$	3.66	6.83	0.000
$V_{40\text{ Gy}}$	1.79	4.65	0.000
Mean dose (Gy)	3.15	4.25	0.000
Maximum dose (Gy)	49.98	49.12	0.069
Contralateral breast			
Mean dose (Gy)	1.02	0.12	0.000
Maximum dose (Gy)	4.89	1.89	0.000

4.1. Technical Issues. In this study, we present a novel HT-based method with similar or even better low-dose area for risk organs. Before the planning process, we divided beamlets delivered from all angles around the patient into six categories (see Figure 2).

- (i) Category 1: beamlets that only pass through PTV. Obviously, these beamlets were most efficient and would cause minimum radiation to the organs at risk, and thus these beamlets were preferred in the planning process.
- (ii) Category 2: beamlets that pass through PTV and then through the non-OARs body. These beamlets were less efficient than category 1 but would also cause minimum radiation to the organs at risk.
- (iii) Category 3: the opposite of category 2. Beamlets pass through the non-OARs body and then PTV. These beamlets were less efficient than category 2 but were similar to category 2 in that they would not deliver dose to the organs at risk.

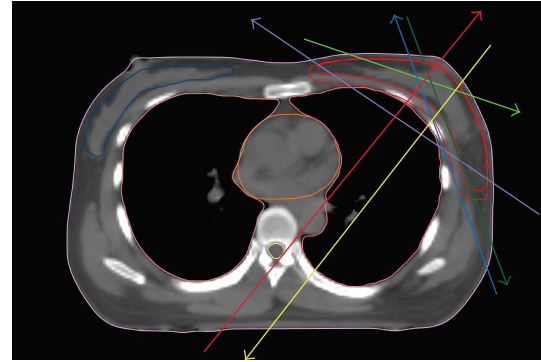


FIGURE 2: Schematic figure of each category.

- (iv) Category 4: beamlets that pass through PTV and organs at risk and then PTV again. This category was common in tangential FIF-IMRT plans and may cause high-dose areas within OARs.
- (v) Category 5: beamlets that pass through PTV and then OARs. These beamlets may be the main cause of “low-dose bath.”
- (vi) Category 6: beamlets that pass through OARs and then the PTV. This category is inefficient and should be avoided.

Figure 3 shows the path of X-rays for every categories described above. In the planning process, we tried to design strategies which could raise the proportion of categories 1 and 2 beamlets, reduce the proportion of categories 3 and 4 beamlets, and minimize or even eliminate the category 5 and 6 beamlets.

Given that the breast is situated over the outer border of the chest, if we place beam angles around the chest wall like the peels of an apple, the lungs, contralateral breast, and heart could be spared. The question was how to restrict beams around the chest wall. To prevent dose delivery to a structure, the structure can be designated as “completely blocked” during the planning process. We tried different types of blocks and found this method to be suitable: we draw a tangential line at the posterior border of traditional 3D-CRT beam and define the ipsilateral lung and heart below this line as a new structure “block 1.” If we designate “block 1” as “completely blocked,” and designate contralateral lung and contralateral breast as “directionally blocked,” radiation would be delivered around chest wall as we intend, and these organs or regions would receive less radiation. Obviously, this technique could also be applied for tumors of the right breast.

4.2. PTV. Both techniques show adequate PTV coverage. LDC-HT resulted in a lower mean PTV dose than FIF-IMRT. LDC-HT is also associated with a significantly better homogeneity index and conformity index. This supports

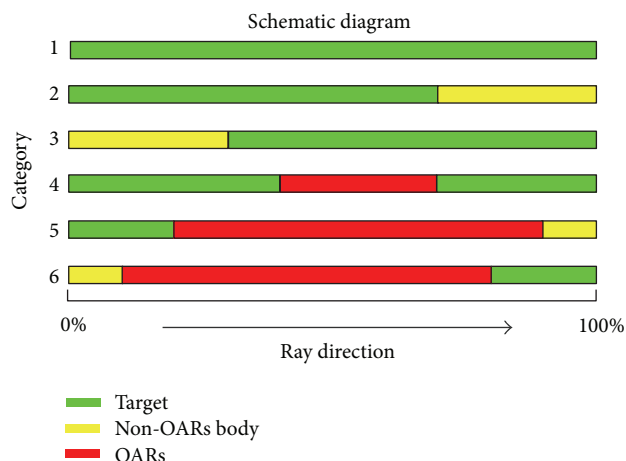


FIGURE 3: Path of X-ray for every category.

previous studies that have shown increased homogeneity with HT [11]. However, it is difficult to estimate if these differences would result in clinically detectable benefits such as better cosmesis or a higher local control rate.

4.3. Lungs. Radiation-induced lung injury (RILI) variously occurs after whole breast radiotherapy [12]. Most of those cases are subclinical, but about 1–5% are clinically significant radiation pneumonitis [13]. RILI is not only correlated with mean lung dose and V_{20} ; the volume of the lung spared from doses of >5 Gy is an independent dosimetric factor of RILI [14]. Previous studies demonstrated that HT may reduce high-dose regions of ipsilateral lung, but increase the low-dose area [15, 16]. The low-dose “bath” of lung is the main concern of radiation oncologists considering the use of TomoTherapy for whole breast radiation.

In this study, low-dose area constrained helical TomoTherapy-based radiotherapy (LDC-HT) showed dosimetry advantages over FIF-IMRT for ipsilateral lung and heart in not only high-dose levels but also low-dose levels such as V_{10} and V_5 . For contralateral lung, both techniques can provide good protection, although the mean dose of LDC-HT is higher than FIF-IMRT (0.51 Gy versus 0.09 Gy; $P = 0.000$). So, we expect even lower RILI rates for LDC-HT.

4.4. Heart. A recent case-control study conducted by Darby et al. [17] has highlighted the importance of minimizing incidental cardiac irradiation in patients with breast cancer, as it is a known risk factor for the development of ischaemic heart disease. Importantly, no dose threshold was observed: the increased risk (relative to baseline risk) per Gy of exposure was approximately constant throughout the range of mean radiation doses to the heart studied (from as low as approximately 2 Gy to the maximum >27 Gy).

In our study, almost all dose levels of heart (V_5 56.97%, V_{10} 58.78%, V_{20} 70.70%, V_{30} 81.94%, V_{40} 91.46%, and D_{mean} 44.63%) were significantly decreased with LDC-HT compared with FIF-IMRT. So, we expect lower risk of ischaemic heart disease after LDC-HT whole breast radiotherapy.

4.5. Contralateral Breast. LDC-HT increases both D_{mean} and D_{max} of contralateral breast relative to tangential FIF-IMRT. Although the doses to the contralateral breast are very low with both techniques, the increase in maximal dose and mean dose with LDC-HT might confer an increased risk of secondary breast malignancy, especially in young women [18–21].

Although previous studies demonstrated that improved dosimetry may lead to less toxicity [22, 23], clinical benefits of LDC-HT need further investigation. A randomized phase I/II clinical trial is going on in our centre to evaluate the effect and acute toxicity of LDC-HT over FIF-IMRT.

Finally, LDC-HT had longer treatment time than FIF-IMRT. The use of a 5 cm field width instead of a 2.5 cm field width for TomoTherapy would reduce treatment time with 30–50%, but that might cause worse dosimetry and wider dose spread in the patient superior and inferior to the target. The newly available dynamic jaws capability (TomoEDGE) would eliminate the low superior and inferior doses and should give comparable plans to the 2.5 cm plans [24].

5. Conclusions

LDC-HT could have better coverage and dose homogeneity of target volume, better OAR sparing, and even better low-dose areas than 3D-CRT and FIF-IMRT. It could be a feasible method in whole breast radiotherapy. Clinical benefits of LDC-HT need further investigation.

Conflict of Interests

The authors have not had any actual or potential conflict of interests.

References

- [1] P. Eifel, J. A. Axelson, J. Costa et al., “National institutes of health consensus development conference statement: adjuvant therapy for breast cancer,” *Journal of the National Cancer Institute*, vol. 93, no. 13, pp. 979–989, 2001.
- [2] M. E. Taylor, C. A. Perez, K. J. Halverson et al., “Factors influencing cosmetic results after conservation therapy for breast cancer,” *International Journal of Radiation Oncology, Biology, Physics*, vol. 31, pp. 753–764, 1995.
- [3] H. B. Ayata, M. Güden, C. Ceylan, N. Küçük, and K. Engin, “Comparison of dose distributions and organs at risk (OAR) doses in conventional tangential technique (CTT) and IMRT plans with different numbers of beam in left-sided breast cancer,” *Reports of Practical Oncology and Radiotherapy*, vol. 16, no. 3, pp. 95–102, 2011.
- [4] A. P. Forrest, H. J. Stewart, D. Everington et al., “Randomized controlled trial of conservation therapy for breast cancer: 6-year analysis of the Scottish trial,” *The Lancet*, vol. 348, no. 9029, pp. 708–713, 1996.
- [5] S. Darby, P. McGale, C. Correa et al., “Effect of radiotherapy after breast-conserving surgery on 10-year recurrence and 15-year breast cancer death: meta-analysis of individual patient data for 10 801 women in 17 randomised trials,” *The Lancet*, vol. 378, no. 9804, pp. 1707–1716, 2011.

- [6] D. Landau, E. J. Adams, S. Webb, and G. Ross, "Cardiac avoidance in breast radiotherapy: a comparison of simple shielding techniques with intensity-modulated radiotherapy," *Radiotherapy and Oncology*, vol. 60, no. 3, pp. 247–255, 2001.
- [7] L. Hong, M. Hunt, C. Chui et al., "Intensity-modulated tangential beam irradiation of the intact breast," *International Journal of Radiation Oncology Biology Physics*, vol. 44, no. 5, pp. 1155–1164, 1999.
- [8] F. A. Vicini, M. Sharpe, L. Kestin et al., "Optimizing breast cancer treatment efficacy with intensity-modulated radiotherapy," *International Journal of Radiation Oncology, Biology, Physics*, vol. 54, pp. 1336–1344, 2002.
- [9] B. C. Cho, M. Schwarz, B. J. Mijnheer, and H. Bartelink, "Simplified intensity-modulated radiotherapy using pre-defined segments to reduce cardiac complications in left-sided breast cancer," *Radiotherapy and Oncology*, vol. 70, no. 3, pp. 231–241, 2004.
- [10] A. Berrington de Gonzalez, E. Gilbert, R. Curtis et al., "Second solid cancers after radiation therapy: a systematic review of the epidemiologic studies of the radiation dose-response relationship," *International Journal of Radiation Oncology, Biology, Physics*, vol. 86, no. 2, pp. 224–233, 2013.
- [11] H. O'Donnell, K. Cooke, N. Walsh, and P. N. Plowman, "Early experience of tomotherapy-based intensity-modulated radiotherapy for breast cancer treatment," *Clinical Oncology*, vol. 21, no. 4, pp. 294–301, 2009.
- [12] L. B. Marks, S. M. Bentzen, J. O. Deasy et al., "Radiation dose-volume effects in the lung," *International Journal of Radiation Oncology Biology Physics*, vol. 76, no. 3, pp. S70–S76, 2010.
- [13] Y. Seppenwolde, J. V. Lebesque, K. de Jaeger et al., "Comparing different NTCP models that predict the incidence of radiation pneumonitis," *International Journal of Radiation Oncology, Biology, Physics*, vol. 55, pp. 724–735, 2003.
- [14] S.-L. Wang, Z. Liao, A. A. Vaporciyan et al., "Investigation of clinical and dosimetric factors associated with postoperative pulmonary complications in esophageal cancer patients treated with concurrent chemoradiotherapy followed by surgery," *International Journal of Radiation Oncology Biology Physics*, vol. 64, no. 3, pp. 692–699, 2006.
- [15] L. K. Schubert, V. Gondi, E. Sengbusch et al., "Dosimetric comparison of left-sided whole breast irradiation with 3DCRT, forward-planned IMRT, inverse-planned IMRT, helical tomotherapy, and topotherapy," *Radiotherapy and Oncology*, vol. 100, no. 2, pp. 241–246, 2011.
- [16] T. Reynnders, K. Tournel, P. De Coninck et al., "Dosimetric assessment of static and helical TomoTherapy in the clinical implementation of breast cancer treatments," *Radiotherapy and Oncology*, vol. 93, no. 1, pp. 71–79, 2009.
- [17] S. C. Darby, M. Ewertz, P. McGale et al., "Risk of ischemic heart disease in women after radiotherapy for breast cancer," *The New England Journal of Medicine*, vol. 368, no. 11, pp. 987–998, 2013.
- [18] Y. M. Kirova, Y. De Rycke, L. Gambotti, J. Y. Pierga, B. Asselain, and A. Fourquet, "Second malignancies after breast cancer: the impact of different treatment modalities," *British Journal of Cancer*, vol. 98, no. 5, pp. 870–874, 2008.
- [19] Y. M. Kirova, J. R. Vilcoq, B. Asselain, X. Sastre-Garau, and A. Fourquet, "Radiation-induced sarcomas after radiotherapy for breast carcinoma: a large-scale single-institution review," *Cancer*, vol. 104, no. 4, pp. 856–863, 2005.
- [20] Y. M. Kirova, L. Gambotti, Y. De Rycke, J. R. Vilcoq, B. Asselain, and A. Fourquet, "Risk of second malignancies after adjuvant radiotherapy for breast cancer: a large-scale, single-institution review," *International Journal of Radiation Oncology Biology Physics*, vol. 68, no. 2, pp. 359–363, 2007.
- [21] M. Stovall, S. A. Smith, B. M. Langholz et al., "Dose to the contralateral breast from radiotherapy and risk of second primary breast cancer in the WECARE Study," *International Journal of Radiation Oncology Biology Physics*, vol. 72, no. 4, pp. 1021–1030, 2008.
- [22] A. Harsolia, L. Kestin, I. Grills et al., "Intensity—modulated radiotherapy results in significant decrease in clinical toxicities compared with conventional wedge-based breast radiotherapy," *International Journal of Radiation Oncology Biology Physics*, vol. 68, no. 5, pp. 1375–1380, 2007.
- [23] J. P. Pignol, I. Olivotto, E. Rakovitch et al., "A multicenter randomized trial of breast intensity-modulated radiation therapy to reduce acute radiation dermatitis," *Journal of Clinical Oncology*, vol. 26, no. 13, pp. 2085–2092, 2008.
- [24] S. Krause, S. Beck, K. Schubert et al., "Accelerated large volume irradiation with dynamic Jaw/Dynamic Couch Helical Tomotherapy," *Radiation Oncology*, vol. 7, article 191, 2012.

