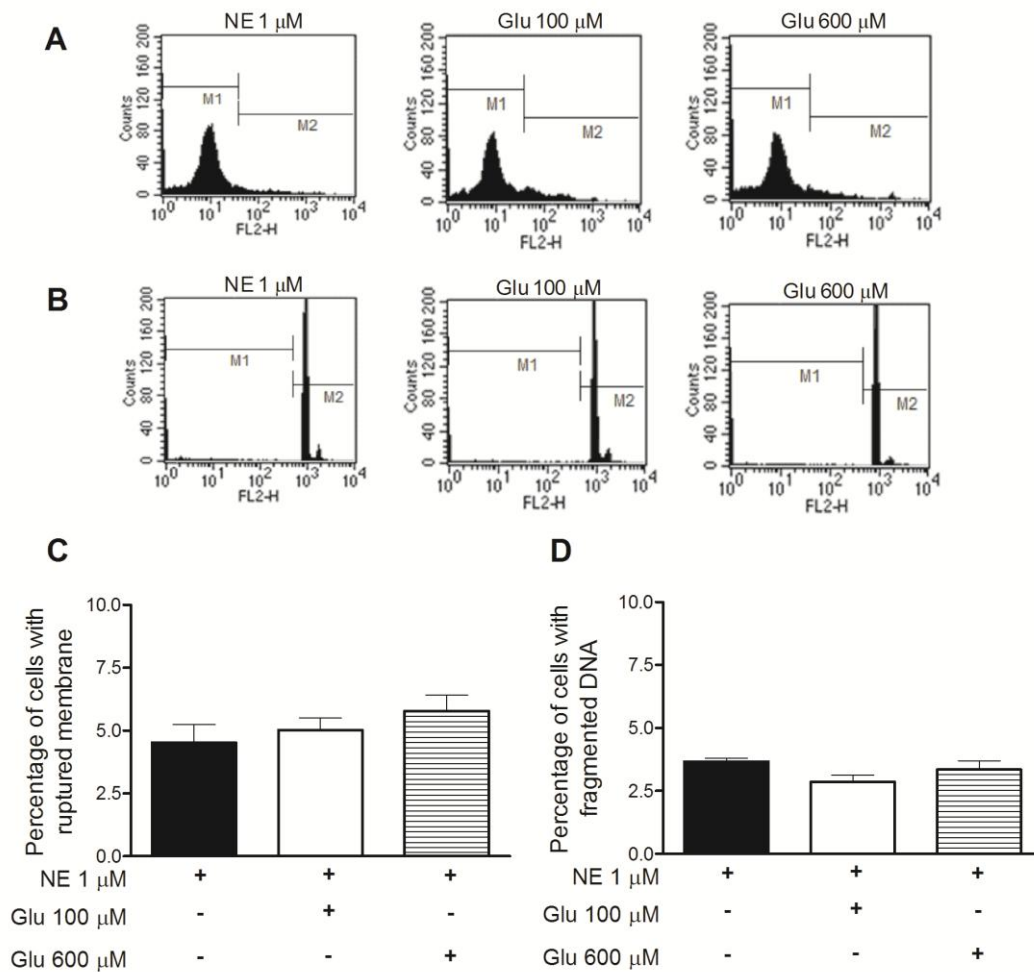


Supplemental Table 1

Supplemental Table 1. Sequence of specific primers for rat glutamate receptors used in RT-PCR assays.

Primers/GenBank No	Size (bp)	Forward	Reverse
GluR1/NM_031608.1	203	5'-TTCTAGGTGCGGTTGTGGGTG-3'	5'-GGAGAACTGGGAACAGAATCGG-3'
GluR2/NM_017261.2	155	5'-ATTGTACTACTACGATGATTC-3'	5'-CGGTGCACAGCATCGTCGGA-3'
GluR3/NM_032990.2	193	5'-TCTGCTCCCAGTTCTCCAGAGG-3'	5'-CCCAGAAGACTCAGAATGGCAC-3'
NR1/NM_017010.1	201	5'TACTACTGCCAACTTCCGAGCTTTC-3'	5'-GCACAGTAACCAGGTTACTAGGGA-3'
mGluR1/NM_017011.1	79	5'-CCAACGGAGGGATCACAATAA-3'	5'-TCCAGCCTCAGCTTCAGGAA-3'
mGluR2/NM_001105711.1	198	5'-TGGCACAGGCAAGGAGACA-3'	5'-CGGTGGTTACAGCGCAATG-3'
mGluR3/NM_001105712.1	196	5'-TGCTCTGAGGGTGAATATGG-3'	5'-ATGTTACGCAGCCGTGCTT-3'
mGluR5/NM_017012.1	165	5'-TTGTGGCAGCGACTGTCTGT-3'	5'-TCTTGGGAAAGGGTTTGATGA-3'
mGluR7/NM_031040.1	70	5'-CAGAAACGGAAGCGAAGCTT-3'	5'-GTTTGTGTGACAGCCTTGATGAC-3'

Supplemental Figure 1



Supplemental Figure 1. Flow cytometric analysis of cell membrane integrity and DNA fragmentation. Pineal gland cells were treated with norepinephrine in the absence (NE) or presence of glutamate (Glu). Histograms show the intensity in the FL-2 channel, which corresponds to the propidium iodide emission wavelength. (A) Representative histograms of the membrane integrity analysis. (B) Representative histograms of the DNA fragmentation analysis. Percentage of rat pineal gland cells with ruptured membrane (C) and DNA fragmentation (D) after treatment with NE 1 μM and Glu 100 or 600 μM for 5 h. The values are presented as the mean \pm SEM from three experiments.