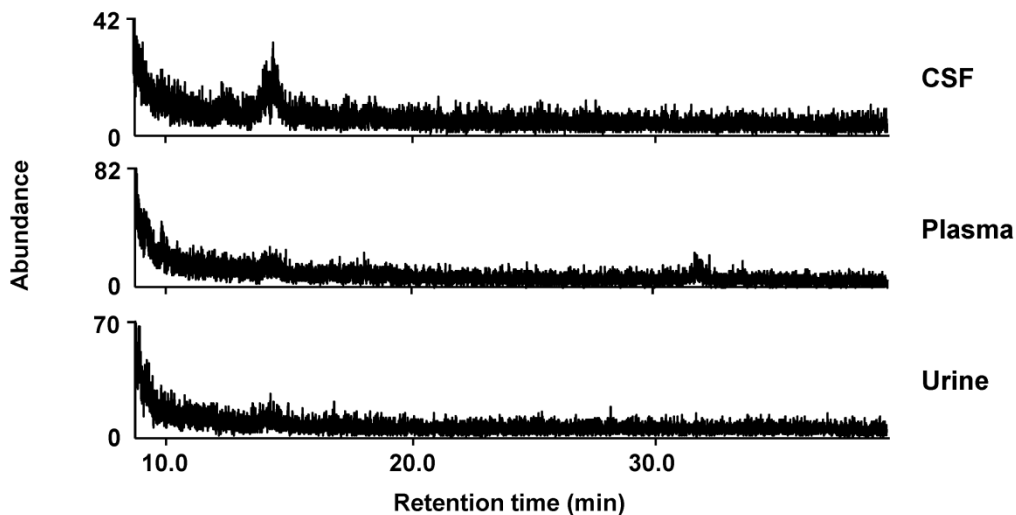
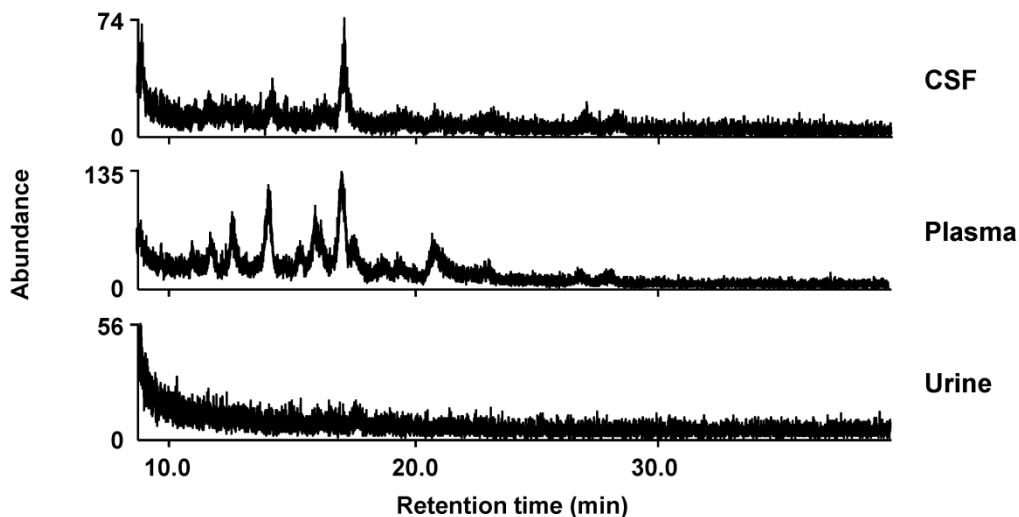


(a) m/z 569.4



(b) m/z 573.4



Supplemental Figure 3. The chromatograms monitored for the additional 30-min holding (8.6 min to 38.6 min) of the column at 280°C after normal acquisition of data. (a) The chromatograms at m/z 569.4 for the same CSF, plasma, and urine samples described in Figure 4. (b) The chromatograms at m/z 573.4 for the same CSF, plasma, and urine samples described in Figure 4.