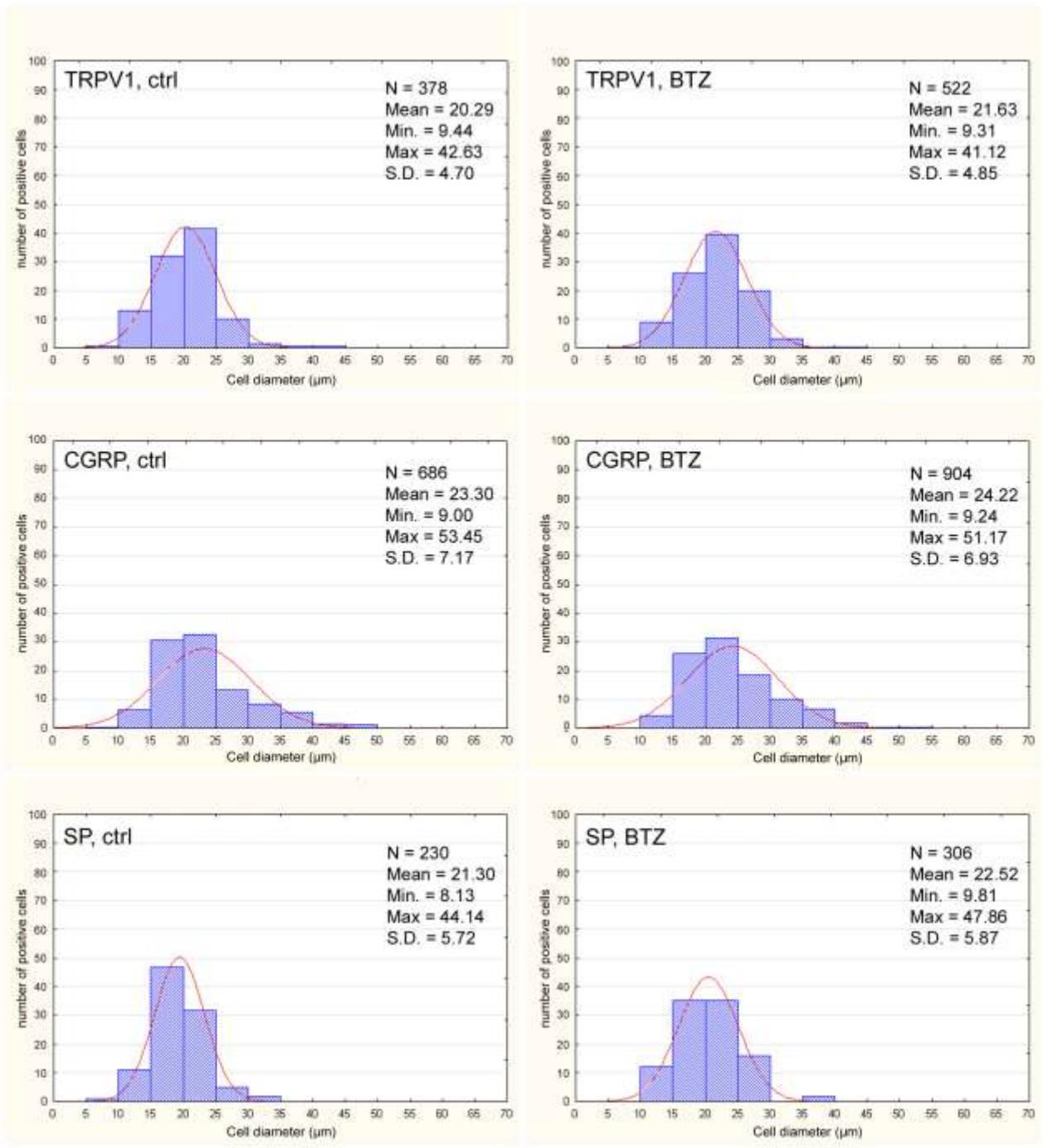
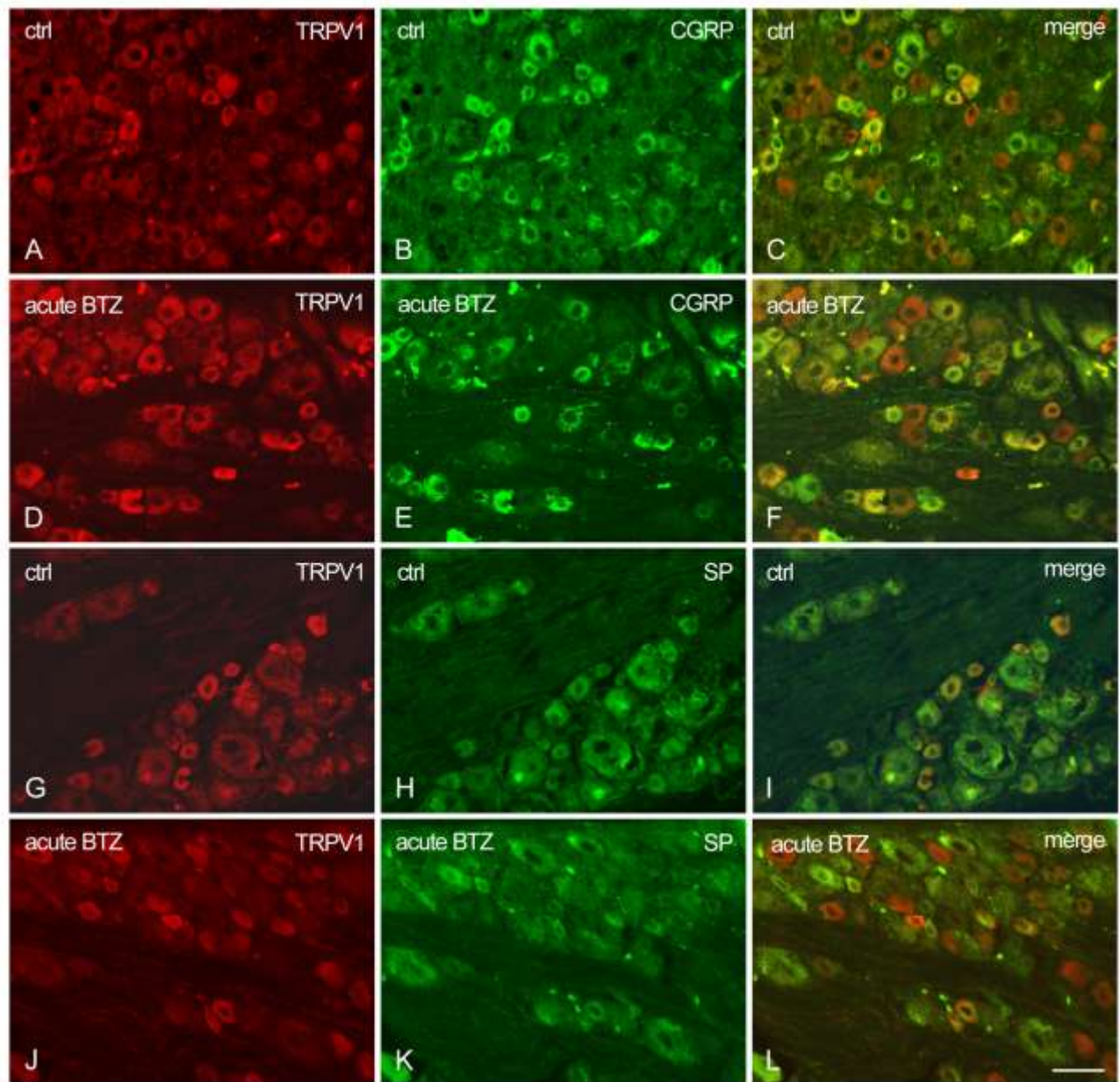


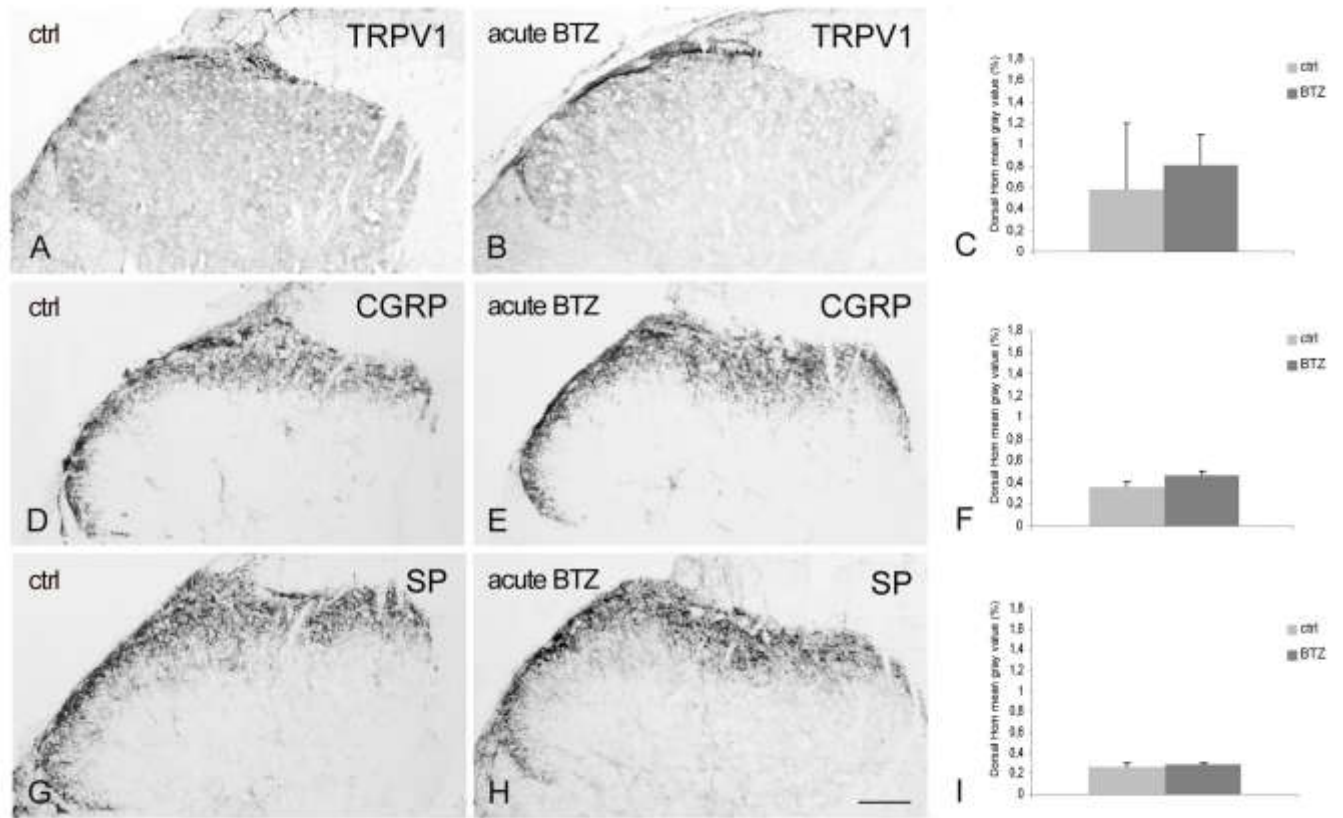
Supplemental Figure 1



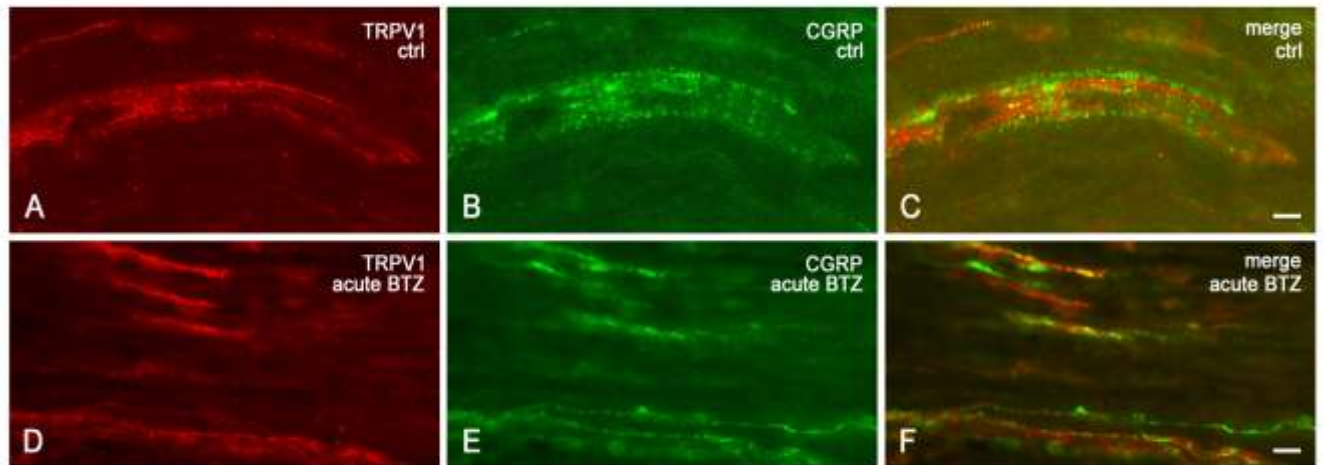
Supplemental Figure 2



Supplemental Figure 3



Supplemental Figure 4



Supplemental Figure 5

Supplemental files related to this article

Supplemental Figure 1

Immunoreactivity to TRPV1 (A, B), CGRP (C, D) and SP (E-G) in representative sections of lumbar DRG from control (ctrl) (A, C, E) and acutely BTZ-treated rats (B, D, F, G). Arrows in G point to SP-positive satellite cells. Scale bar = 25 μm .

Supplemental Figure 2

Size frequency histogram of TRPV1-, CGRP-, and SP-LI DRG neurons from control (ctrl) and acutely BTZ-treated rats. Cells present in at least 6 sections were measured. x-axis values represent the mean cell diameters expressed in μm ; y-axis reports values of relative percent frequency. Curve superimposed on the histogram represents the theoretical normal distribution. N = total number of sized positive neurons; S.D. = standard deviation.

Supplemental Figure 3

Double labeling immunofluorescence for TRPV1/CGRP (A-C, D-F) and TRPV1/SP (G-I, J-L) in DRG neurons from control (ctrl) (A-C, G-I) and acutely BTZ-treated rats (D-F, J-L).. C, F, I, L represent the composite images obtained by overlay of A-B, D-F, G-I and J-L, respectively. Scale bar = 25 μm .

Supplemental Figure 4

Immunoreactivity to TRPV1 (A, B, C), CGRP (D, E, F) and SP (G, H, I) in representative sections of lumbar spinal cord dorsal horn from control (ctrl) (A, D, G) and acutely BTZ-treated rats (B, E, H). Scale bar = 100 μm .

Supplemental Figure 5

Double labeling immunofluorescence for TRPV1/CGRP in sciatic nerve from control (ctrl) (A-C) and acutely BTZ-treated rats (D-F). C, F represent the composite images obtained by overlay of A-B and D-E, respectively. Scale bar = 10 μm .

