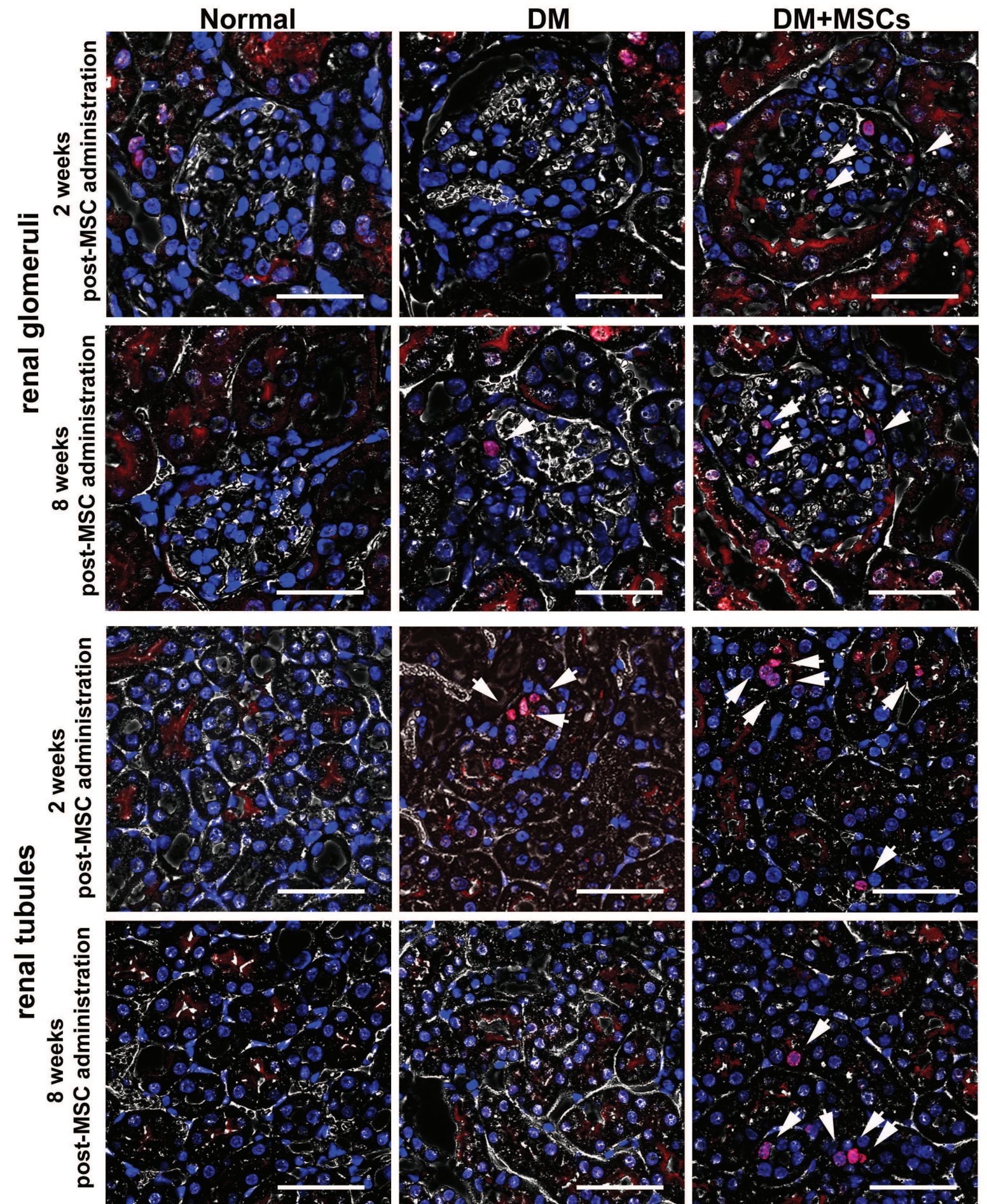


Supplementary Table 1. RT-PCR specific primers and characteristics of amplicons.

Gene	N° GenBank access	Sense (5'→3')	Antisense (5'→3')	Amplicon	
				size (bp)	Tm (°C)
<i>collagen type I</i>	NM_007742	AGAACATCACCTATCACTGCAAGA	GTGGTTTTGTATTCGATGACTGTCT	205	89
<i>TGF-beta1</i>	NM_011577	TGACGTCACCTGGAGTTGTACGG	GGTTCATGTCATGGATGGTGC	170	88
<i>fibronectin</i>	NM_010233.1	AGACCATACCTGCCGAATGTAG	GAGAGTTTCTGTCCTGTAGAG	129	86
<i>Laminin-beta 1</i>	NM_008482.2	AGACCCGAAGAAAAGACAGGC	CCATAGGGCTAGGACACCAAA	124	90
<i>bFGF</i>	NM_008006	GCGACCCACACGTCAAATA	TCCATCTTCCTTCATAGCAAGGT	101	84
<i>EGF</i>	NM_010113	TCTCGGATTGACCCAGAT	CCCAGAACACCTTCCTCTCT	192	84
<i>HGF</i>	NM_010427	AAGCAATCCAGAGGTACGCTAC	TGCCATCAGGATTGCGGCAATA	224	87
<i>IL-4</i>	NM_021283	ACTTGAGAGAGATCATCGGCA	AGCTCCATGAGAACACTAGAGTT	208	86
<i>IL-6</i>	NM_031168	ATCCAGTTGCCTTCTTGGGACTGA	TAAGCCTCCGACTTGTGAAGTGGT	134	86
<i>IL-10</i>	NM_010548	AGGGTTACTTGGGTTGCCAA	CACAGGGGAGAAATCGATGA	174	87
<i>Nphs</i>	NM_01945	CAGCGATGATGCGGAGTACG	CAGCTACCCAGGTAAGTGTGC	149	85
<i>GAPDH</i>	XM_001474390	ACTCCAACCTCACGGCAAATTC	TCTCCATGGTGGTGAAGACA	171	88

Supplementary Figure 1



Supplementary Figure 2

