

Supplement Data

Legends

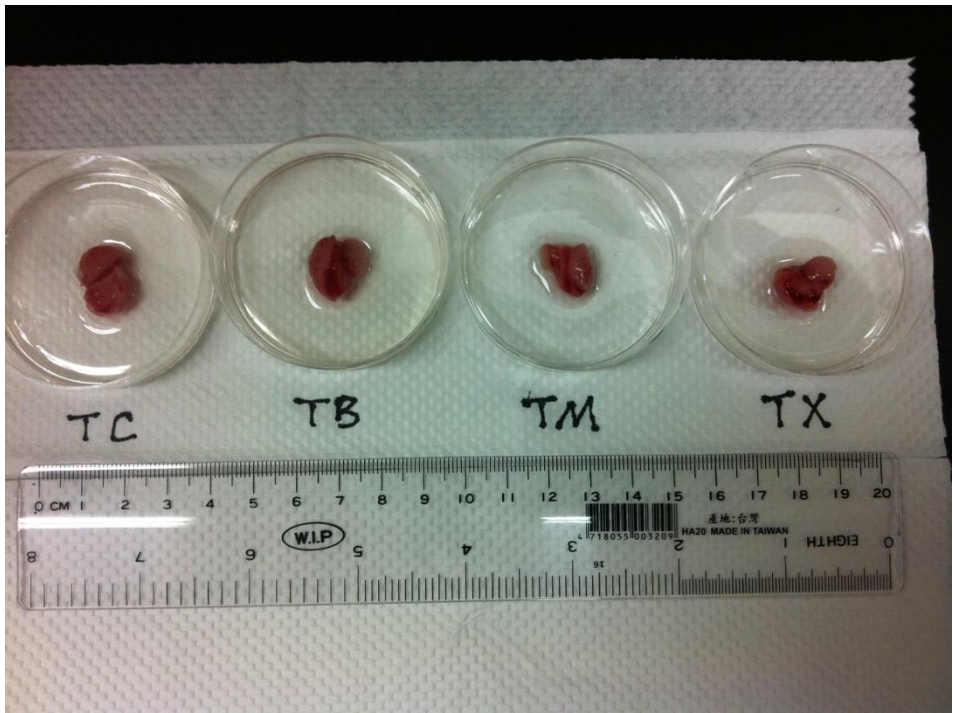
Supplement Data 1. The observation of the tumor size after oral the mushroom beta glucan compared to the control (fed with twice-distilled water). *Group TC: fed with twice-distilled water; TM: fed with celecoxib; group TB: fed with *Antrodia camphorata* beta-glucan; group TX: fed with Ganoderma beta-glucan.

Supplement Data 2. Using the HPLC to analyze the *Ganoderma lucidum* polysaccharides

Supplement Data 3. Using the HPLC to analyze the *Ganoderma lucidum* polysaccharides

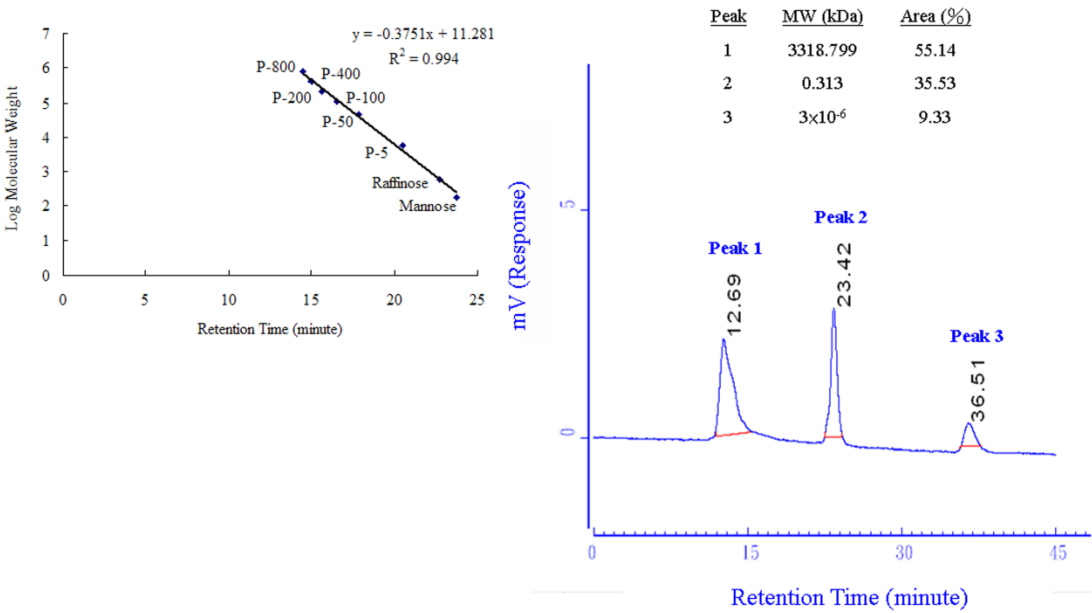
Supplement Data 4. The Flow cytometry analyze the percentage of the M1 and M2 ration in each group. *Group PC: fed with twice-distilled water; group PB: fed with *Antrodia camphorata* beta-glucan (Without Tumor Bearing). Group TC: fed with twice-distilled water; group TM: fed with celecoxib; group TB: fed with *Antrodia camphorata* beta-glucan; group TX: fed with Ganoderma beta-glucan. (Tumor Bearing)

1 Supplement Data 1. The observation of the tumor



2

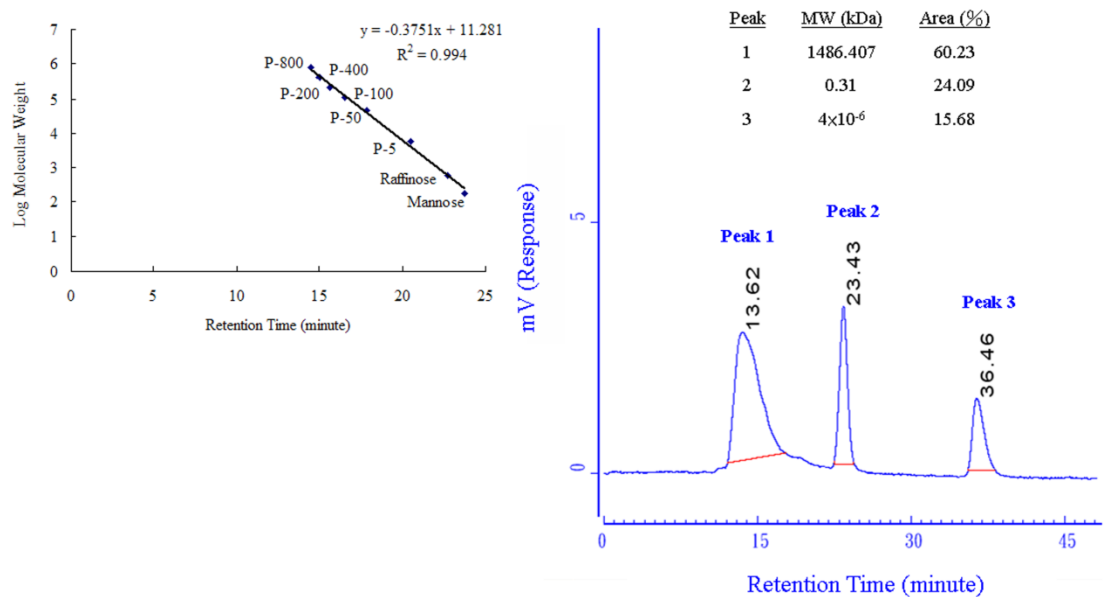
3 Supplement Data 2. HPLC analysis of *Genoderma lucidum* polysaccharides



4

5

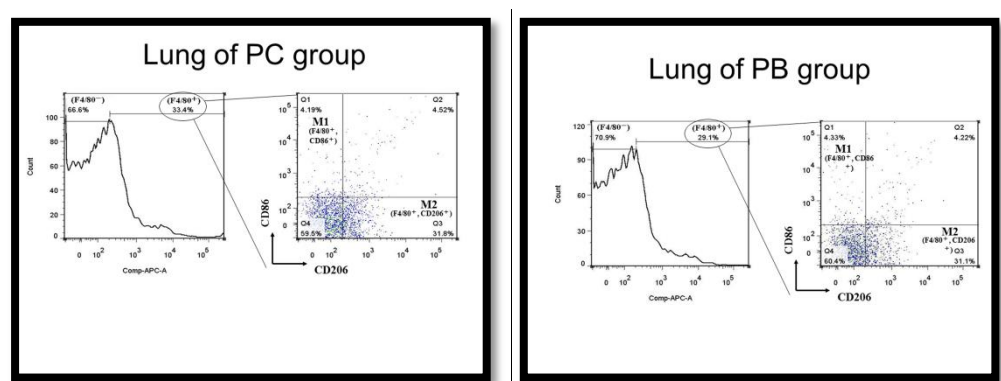
1 **Supplement Data 3. HPLC analysis of *Ganoderma lucidum* polysaccharides**



2

3

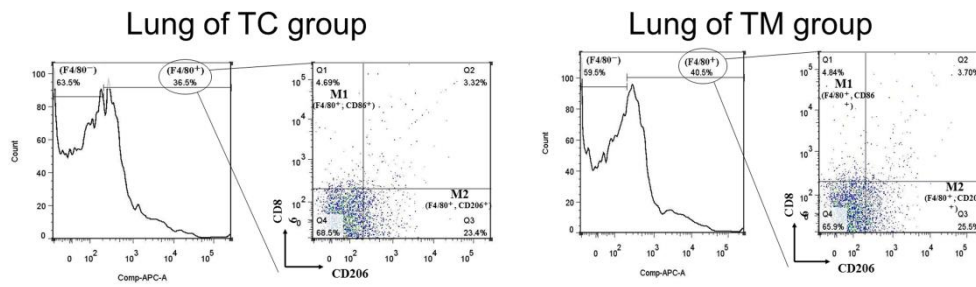
4 **Supplement Data 4. The Flow cytometry analysis**



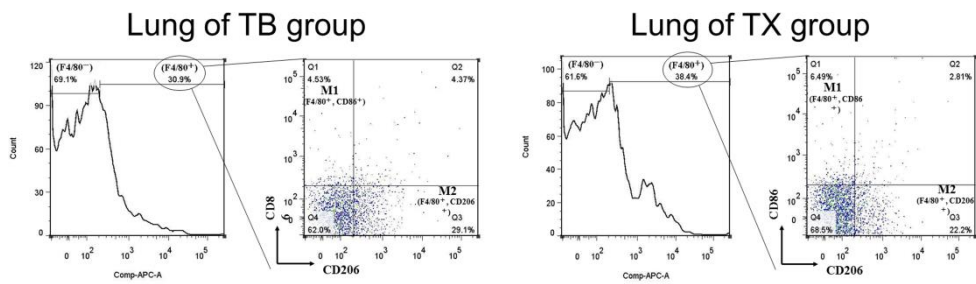
5

6

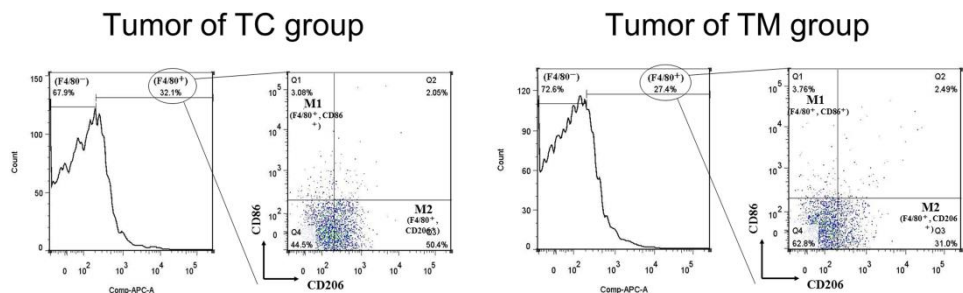
7



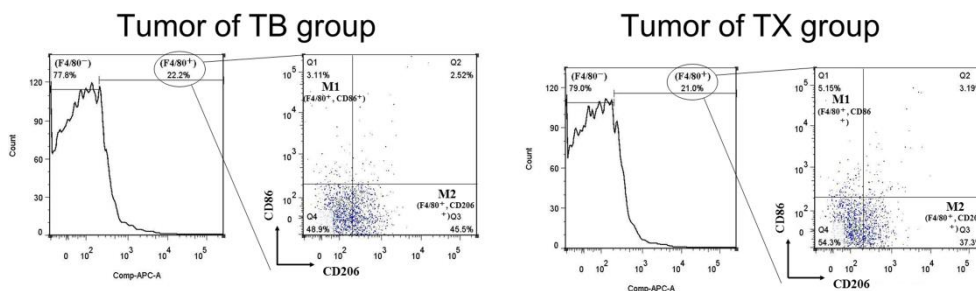
1



2



3



4

5