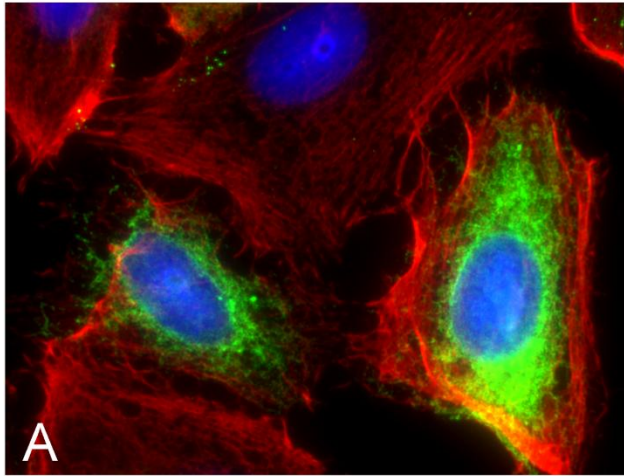
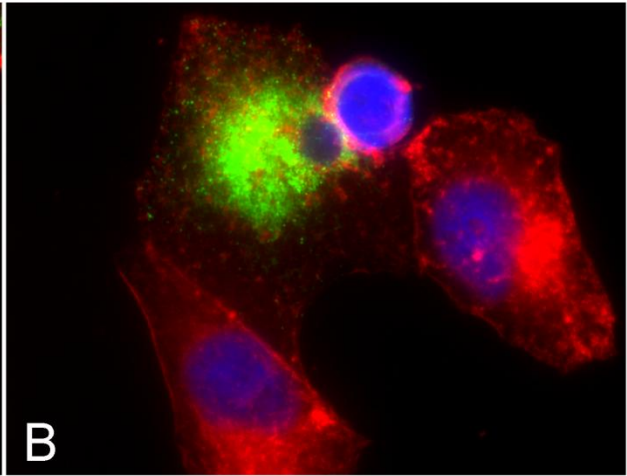


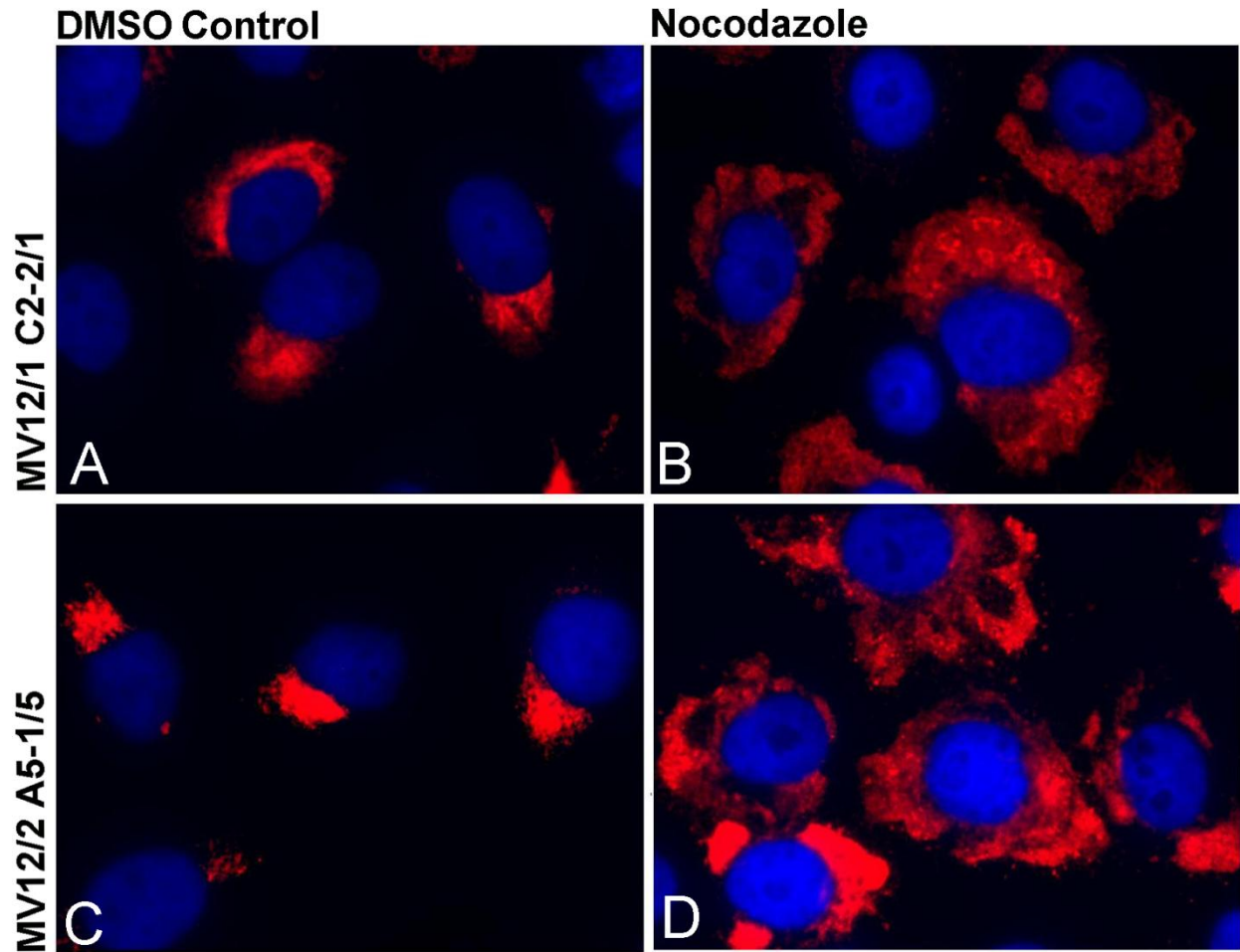
## DMSO Control



## Cytochalasin D



Supplementary Figure 1. IMR32 cells infected with JEV in the presence of cytochalasin D or the equivalent DMSO control. Infected cells treated with DMSO (A) or 0.5 $\mu$ g/ml cytochalasin D (B) upon inoculation and maintained for the entire duration. Cells were fixed at 72 h p.i and JEV E antigen was stained with monoclonal antibody MV12/1/C2-2/1 (green), actin was detected by staining with phalloidin BODIPY 588/568 (red) and the nuclei were stained with DAPI (blue) to show the viability of the cells.



Supplementary Figure 2. IMR32 cells infected with JEV in the presence of nocodazole or the equivalent DMSO control. Infected cells were treated with DMSO as control (A and C) or 10 $\mu$ g/ml nocodazole (B and D) upon inoculation and maintained for the entire duration. Cells were fixed at 72 h p.i and JEV E antigen was stained with monoclonal antibody MV12/1/C2-2/1 (top row) while JEV NS1 antigen was stained with monoclonal antibody MV12/2/A5-1/5 (bottom row). Nuclei were stained with DAPI (blue) to show the viability of the cells.