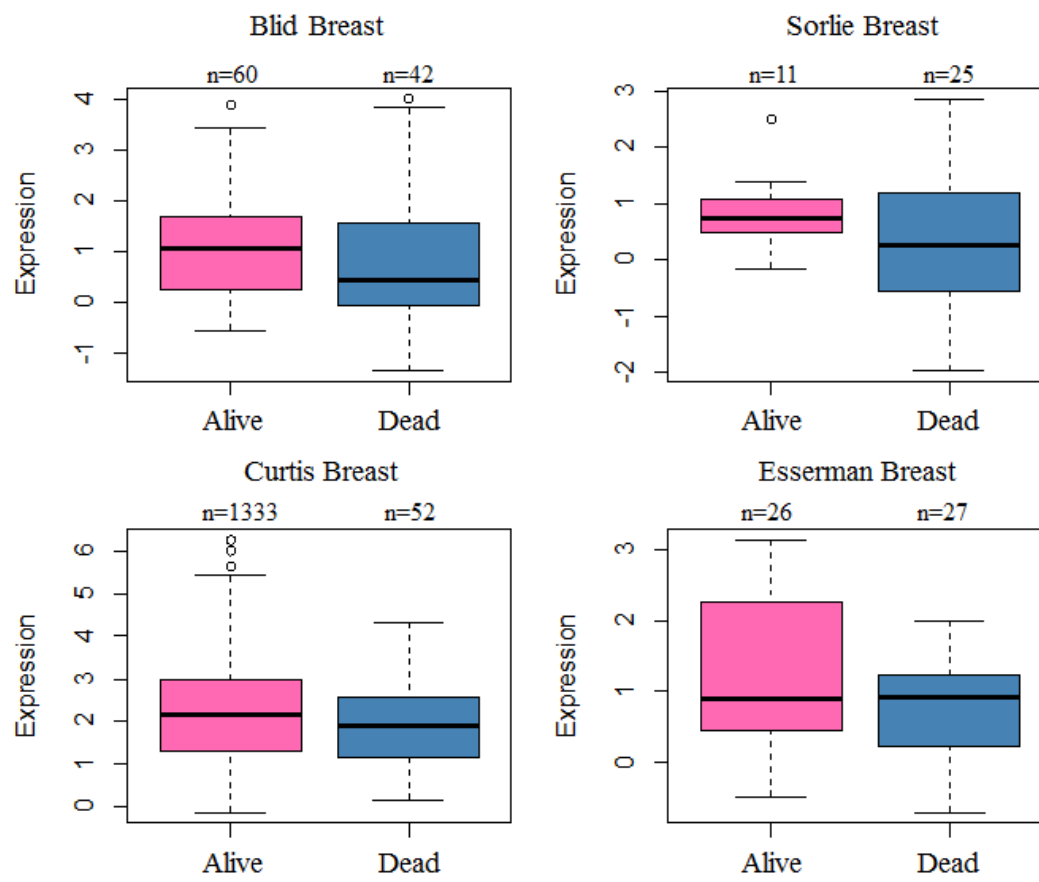
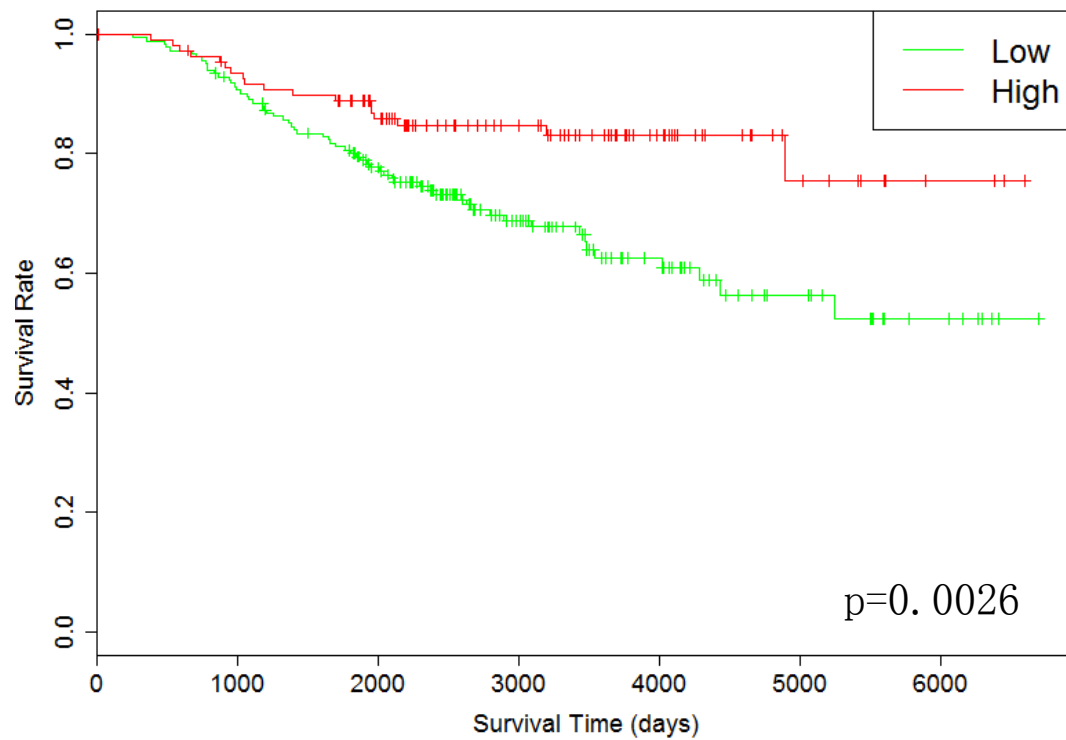


Supplement Figure 1. Survival curves of other potential biomarkers



Supplement Figure 2. HSPA2 gene expression values of patients alive and dead at 5 years in several other breast cancer datasets. The median value and 25th percentile value of HSPA2 expression values in dead patients are both lower than the corresponding values in the alive patients. It also supports the finding that the lower HSPA2 expression in breast cancer related with poor overall survival.



Supplement Figure 3. Kaplan-Meier plots of high expressed HSPA2 patients and low expressed HSPA2 patients. Data were obtained from the Netherlands Cancer Institute (NKI) breast cancer data set.