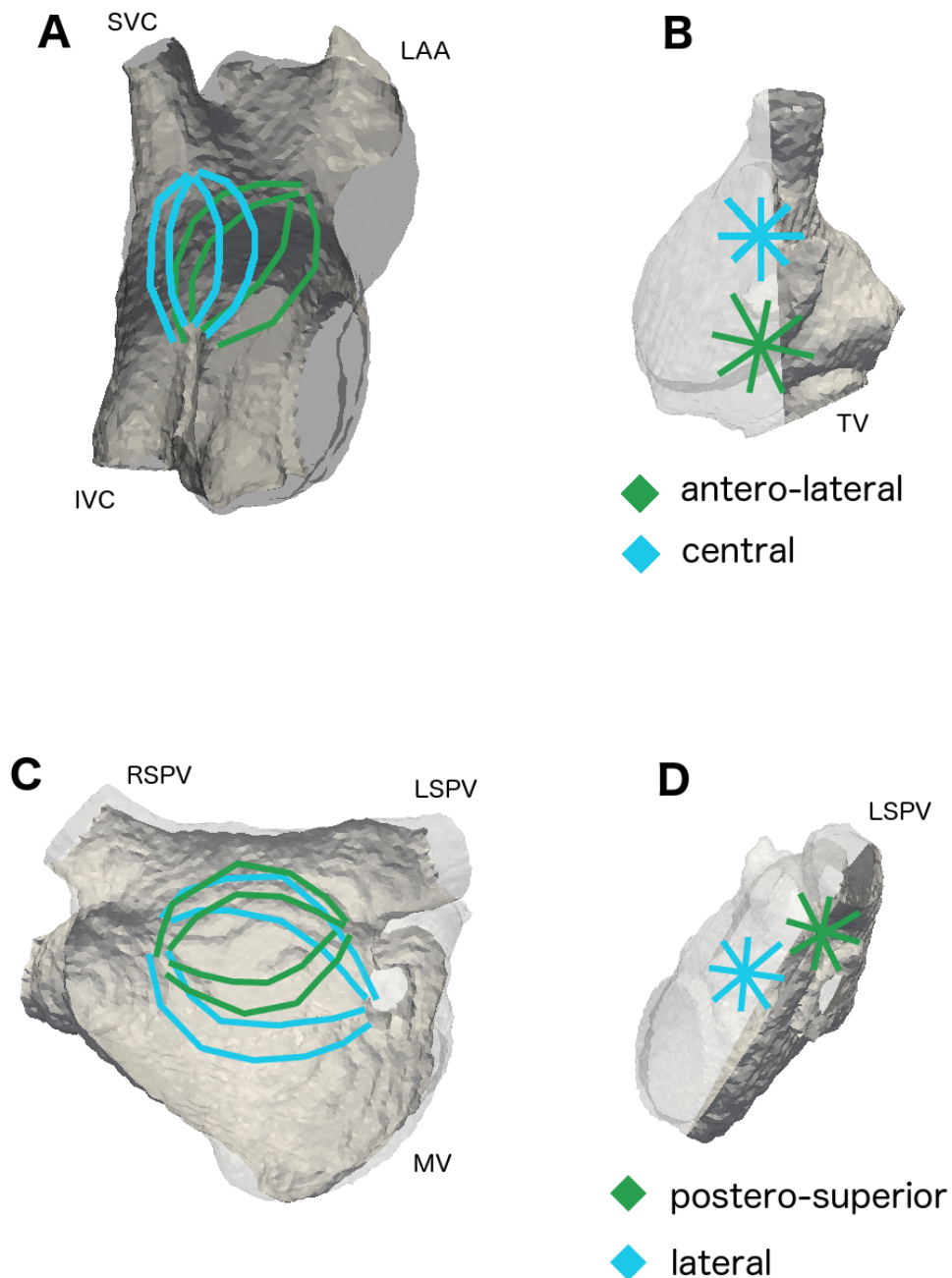


# Supplemental Figure S1



Sketch of basket positions as described in Chapter 2.1.1. Right atrial positions are shown from right lateral (**A**) and cranio-caudal (**B**) perspective. Left atrial positions are shown from anterior (**C**) and left lateral (**D**) perspective. Anatomies on the left were cut open to visualize the catheter positions. The cutting planes are indicated on the right hand side by reduced opacity. (SVC: Superior Vena Cava; IVC: Inferior Vena Cava; LAA: Left Atrial Appendage; TV: Tricuspid Valve; RSPV: Right Superior Pulmonary Vein; LSPV: Left Superior Pulmonary Vein, MV: Mitral Valve))