

Identification of Novel Inhibitors against Co-activator Associated Arginine Methyltransferase 1 (CARM1) Based on Virtual Screening and Biological Assays

Fei Ye^{a,b,†,*}, Weiyao Zhang^{a,†}, Wenchao Lu^{c,d}, Yiqian Xie^c, Hao Jiang^{c,d}, Jia Jin^{a,*}, Cheng Luo^c

^aZhejiang Sci-Tech University, College of Life Sciences, Hangzhou, China

^bKey Laboratory of Plant Secondary Metabolism and Regulation of Zhejiang Province

^cDrug Discovery and Design Center, State Key Laboratory of Drug Research, Shanghai Institute of Materia Medica, Chinese Academy of Sciences, China

^dUniversity of Chinese Academy of Sciences, Beijing, China

*Corresponding author:

Tel: +86 571 86843811; E-mail address: yefei@zstu.edu.cn (Fei Ye).

Tel: +86 571 86843199; E-mail address: aukaukau@163.com (Jia Jin).

†These authors contributed equally

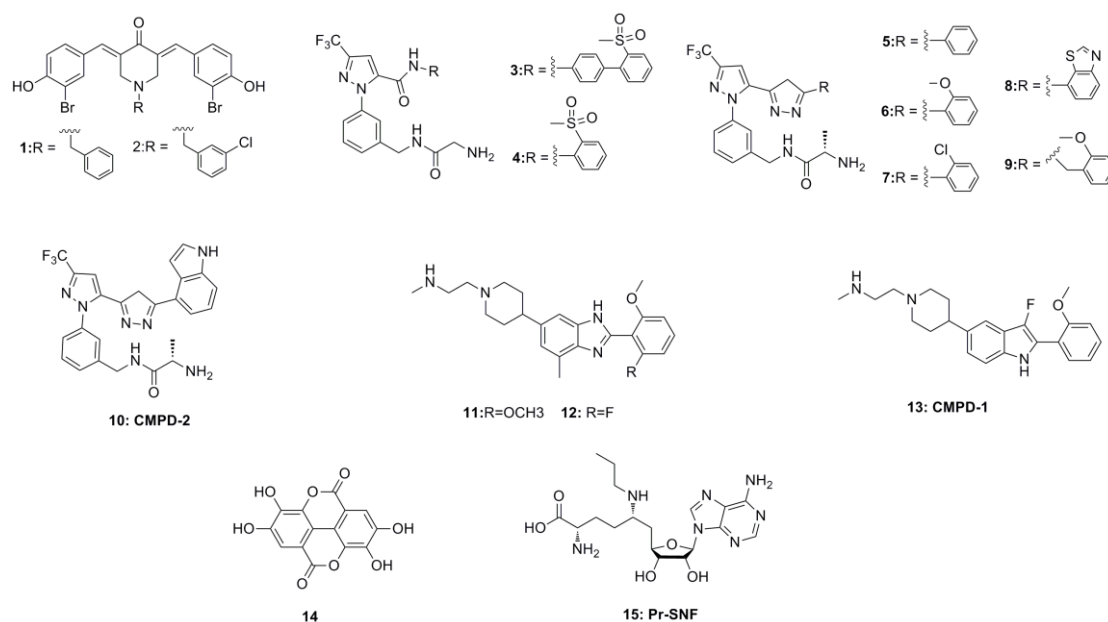


Figure S1. The chemical structures of typical reported inhibitors targeting CARM1.

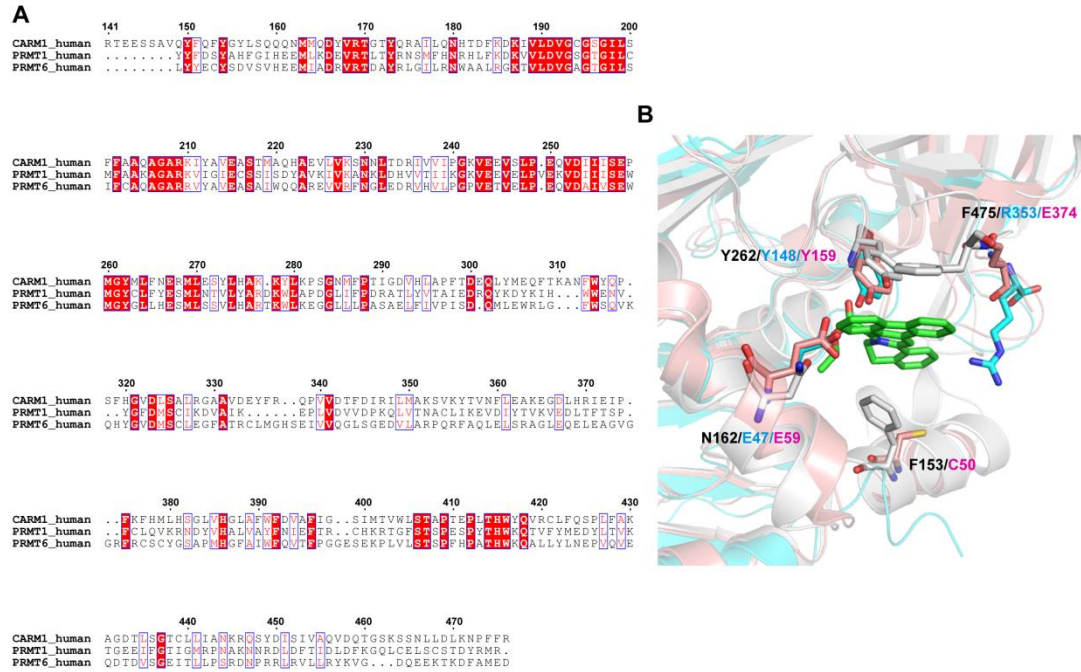


Figure S2. The molecular basis for selectivity of compound CA_C11 and CA_C11.

(A) Sequence alignment of CARM1 (human), PRMT1 (human), and PRMT6

(human). (B) Structural superimposition of active sites of CARM1, PRMT1 and

PRMT6. CARM1 (PDB ID code: 2Y1W), PRMT1 (IORH) and PRMT6 (5E8R) are colored grey, cyan and pink, respectively.