

Fig 3 - supplementary figure

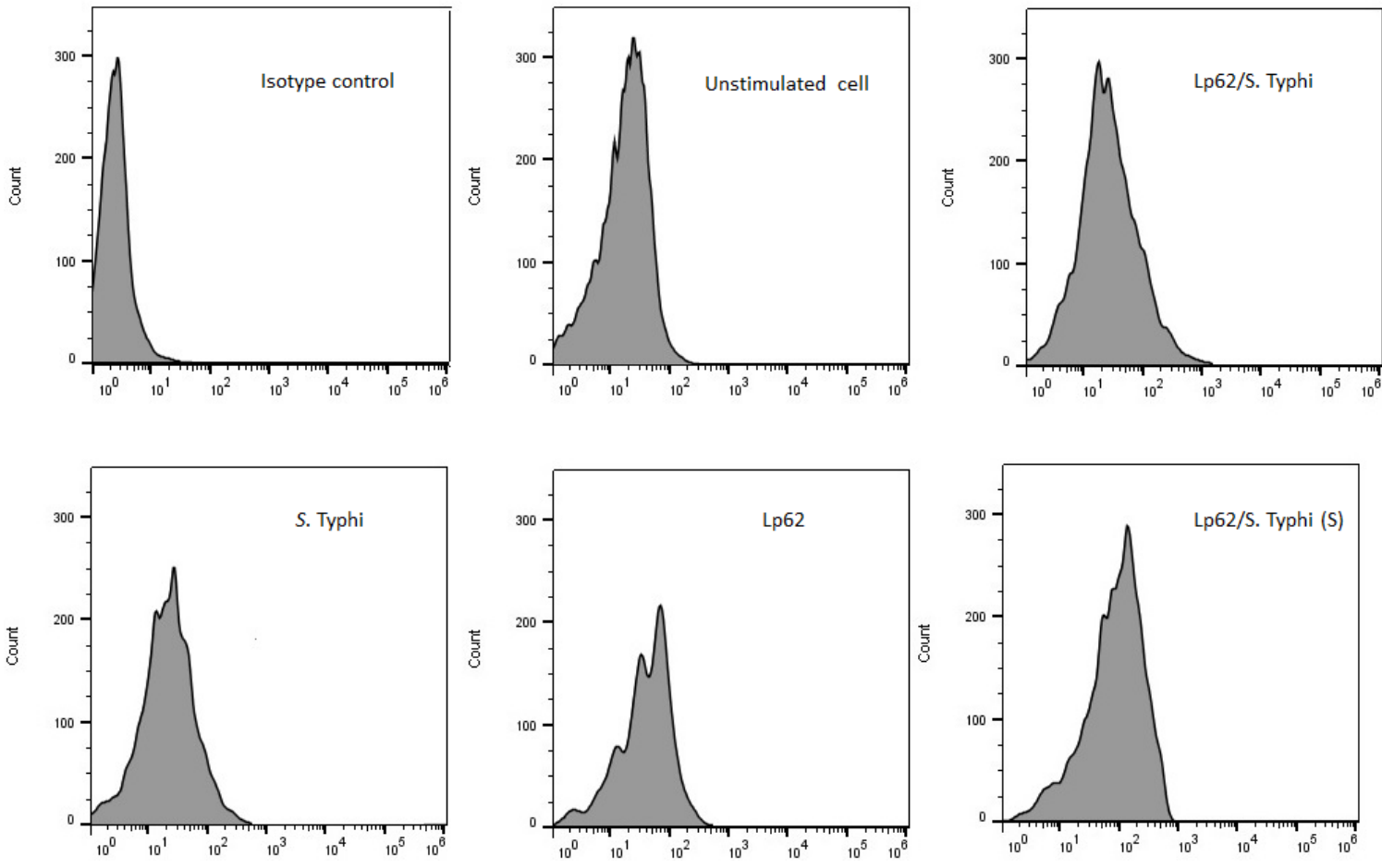


Fig 3. TLR-4 expression in HT-29 cells. HT-29 cells were stimulated with Lp62 and then challenged with *S. Typhi*. In parallel, the effect of simultaneous (S) addition of the two microorganisms was tested. HT-29 cells were labeled internally with anti-TLR4 and analyzed by flow cytometry.