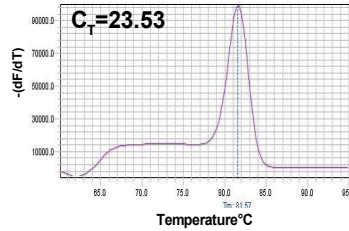
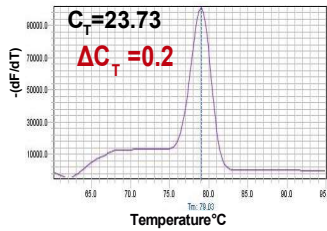


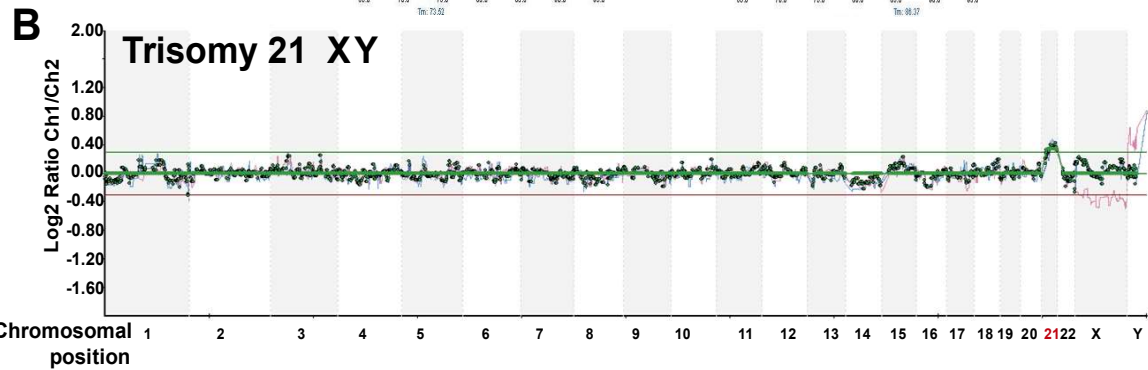
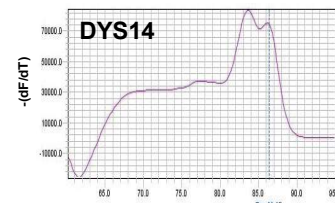
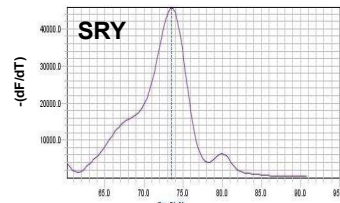
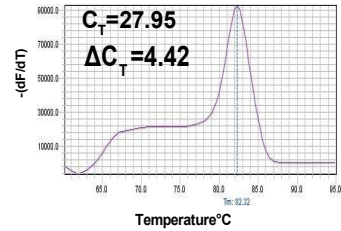
HSD3B2 (reference)



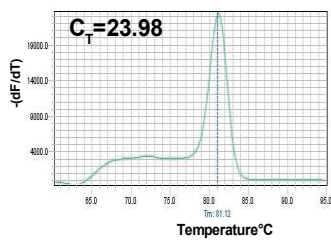
RPL17 (chromosome 18)



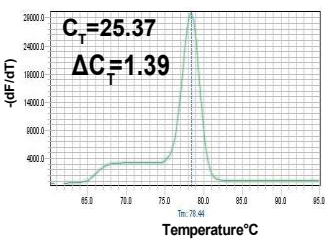
TTC3 (Chromosome 21)



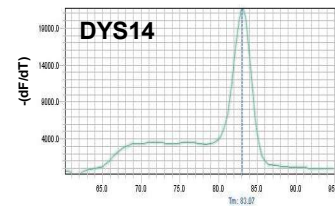
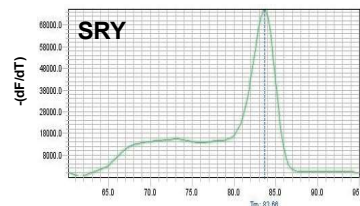
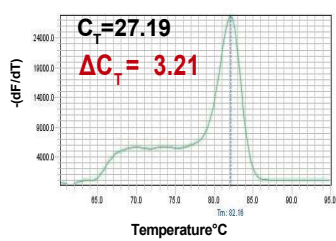
HSD3B2 (reference)



RPL17 (chromosome 18)



TTC3 (Chromosome 21)



Supplementary figure

Detection of trisomies 18 and 21 using CGH analysis and qPCR-based genotyping in blastocyst stage. CGH chromosome profiles and melting temperature peaks used for identification of (A) female (XX) embryo with trisomy 18 (B) male (XY) male embryo with trisomy 21. Delta C_T resulting from subtracting TTC3 and RPL17 from reference (HSD3B2) are exemplified.