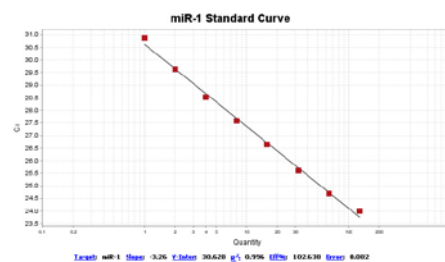


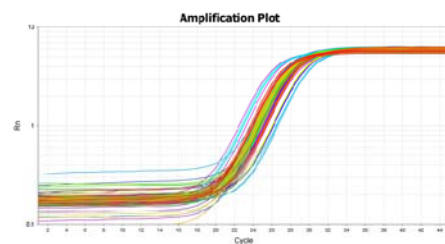
Supplementary material

Relative Expression of miR-1

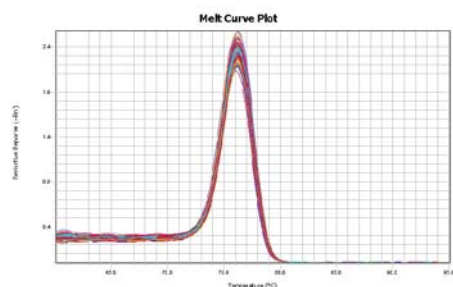
The amplification efficiency was calculated by standard curve. As shown in Figure S1 (a), the amplification efficiency of miR-1 was 102.638%. The amplification plot of miR-1 showed "s" shape which indicated the normal amplification (Figure S1 (b)). At the end of the PCR cycles, melting curve analysis was performed to validate the specific generation of the expected PCR product (Figure S1 (c)).



(a)



(b)



(c)

Figure S1: Relative Expression of miR-1. Quantitative real-time PCR was performed to examine the relative expression of miR-1 in left ventricular tissue at 4 weeks after coronary artery occlusion surgery. (a) The standard curve of miR-1. (b) The amplification plot of miR-1. (c) The melt curve plot of miR-1.