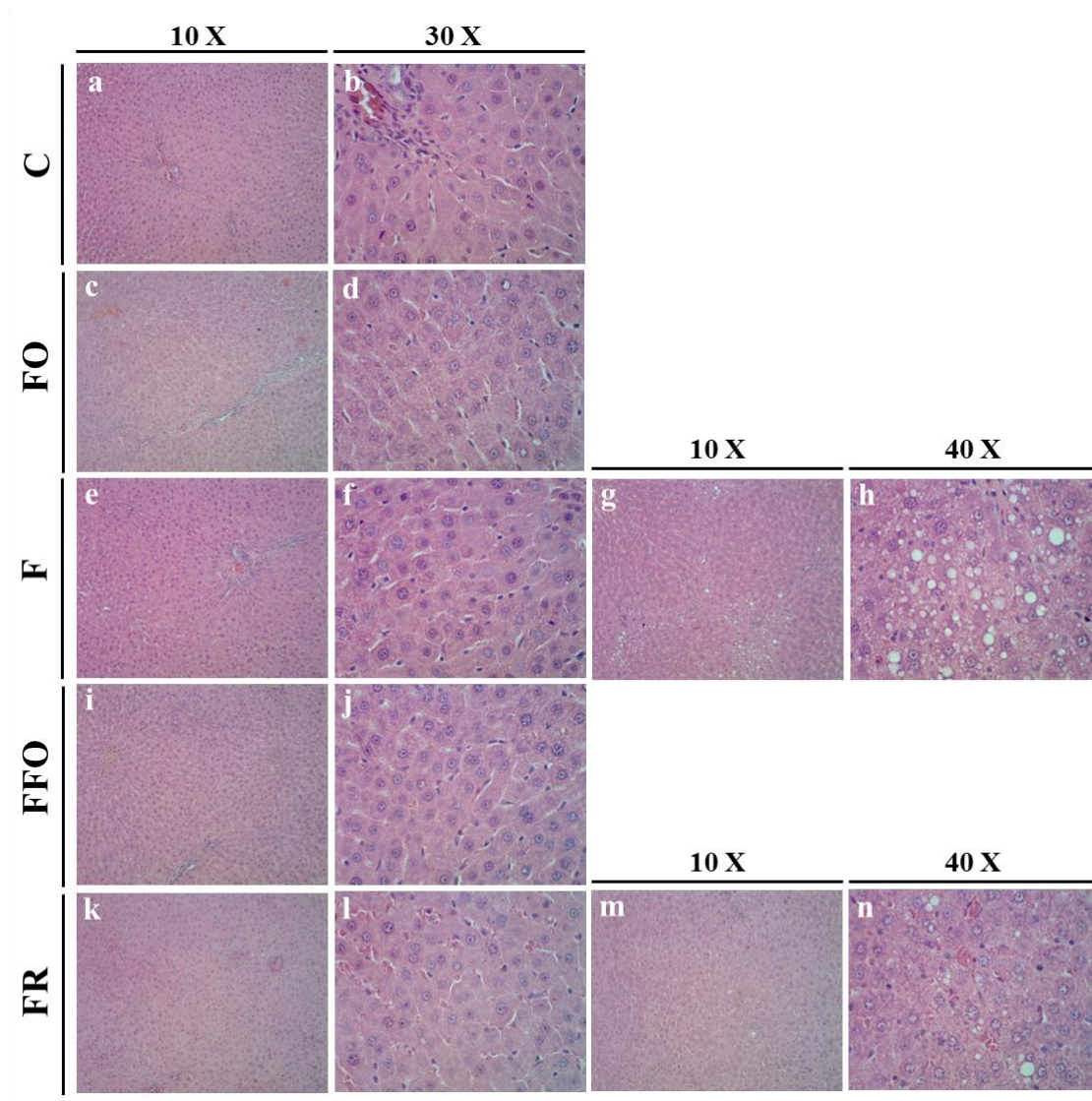
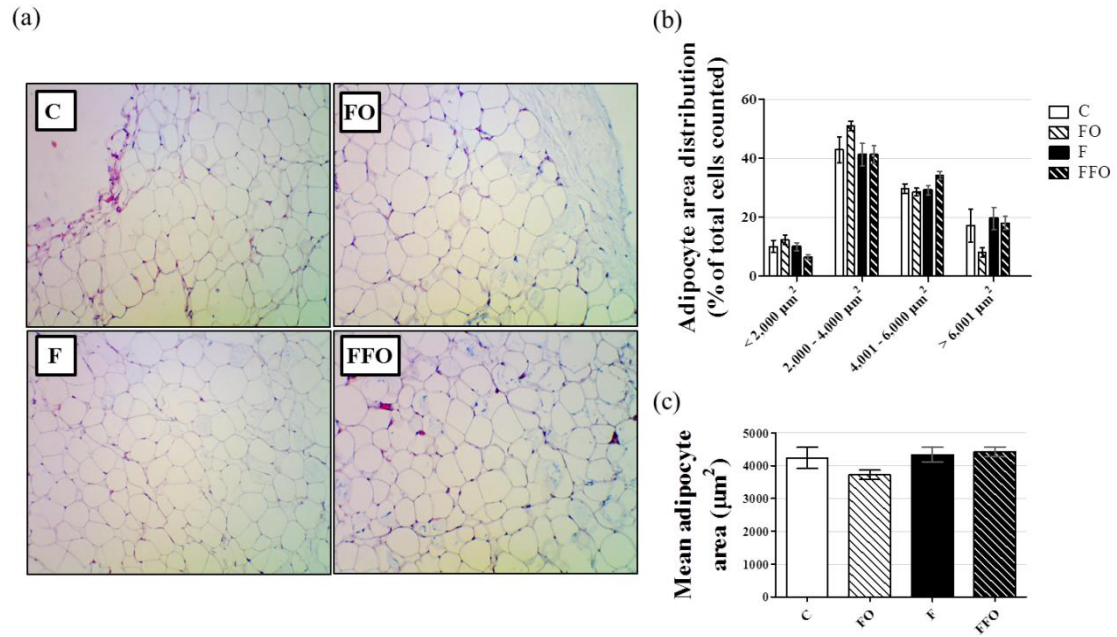


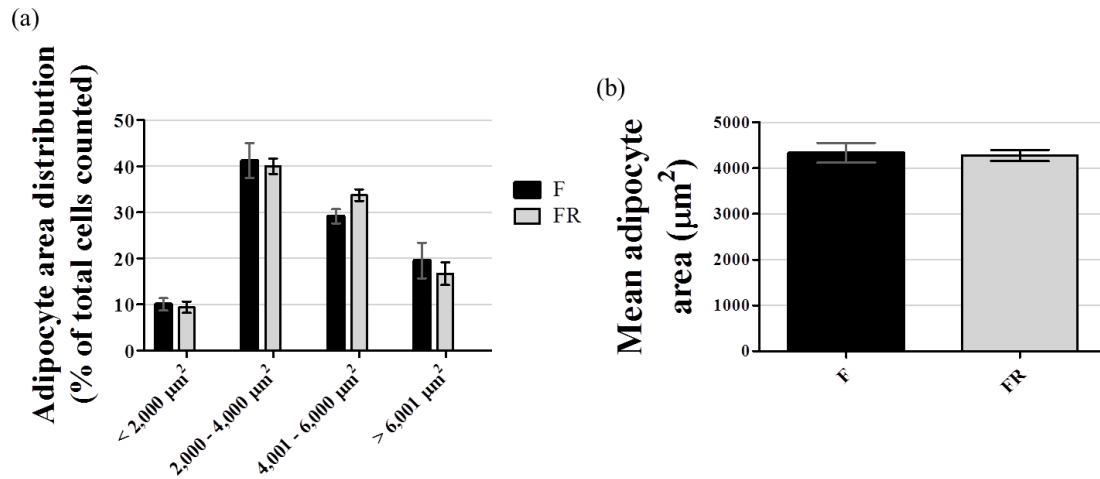
Supplemental figure 1: *Growth rate*. The average normalized food intake (a) and growth rate (b,c) in rats drinking water enriched with 10% fructose (w/v) (a,b) and 30% fructose (w/v) (c). Fructose ingestion lasted 9 consecutive weeks, and fish oil supplementation (1 g/Kg, *b.m.*) was introduced 30 days after the initiation of fructose ingestion and remained until the end of the ninth week. Results are expressed as mean \pm SEM. Asterisk (*) indicates significantly different compared with the respective control groups (the C and FO groups) using ANOVA with Tukey's *post-hoc* test ($p < 0.05$, $n = 10-20$). *b.m.*; body mass.



Supplemental figure 2: *Liver histology*. The panoramic 10X objective (a,c,e,g,i,k,m) and detailed 40X objective (b,d,f,h,j,l,n) representative images from all groups (only in the experimental design with 30 % fructose ingestion). Only one liver section from the F group (g,h) and one from the FR group (m,n) presented signs of fat accumulation, that were less pronounced in the FR group. Sections were stained with hematoxylin/eosin and mounted with entellan. The images were acquired with a CCD camera coupled to a BX-60 Olympus photomicroscope.



Supplemental figure 3: *Adipocyte size after ingestion of 30% fructose*. The panoramic 10X objective (a) representative images from all groups (only in the experimental design with 30 % fructose ingestion). Sections were stained with hematoxylin/eosin and mounted with entellan. The images were acquired with a CCD camera coupled to a BX-60 Olympus photomicroscope. The adipocyte area distribution *per* range (b) and mean adipocyte area (c). Fructose ingestion lasted 9 consecutive weeks and fish oil supplementation (1 g/Kg, *b.m.*) was introduced 30 days after the initiation of fructose ingestion and remained until the end of ninth week. Results are expressed as mean \pm SEM. ($n=6$).



Supplemental figure 4: *Adipocyte size after discontinuation of 30% fructose ingestion.* The adipocyte area distribution *per range* (a) and mean adipocyte area (b). Fructose ingestion lasted 9 consecutive weeks and fish oil supplementation (1 g/Kg, *b.m.*) was introduced 30 days after the initiation of fructose ingestion and remained until the end of ninth week. Results are expressed as mean \pm SEM. ($n=6$).