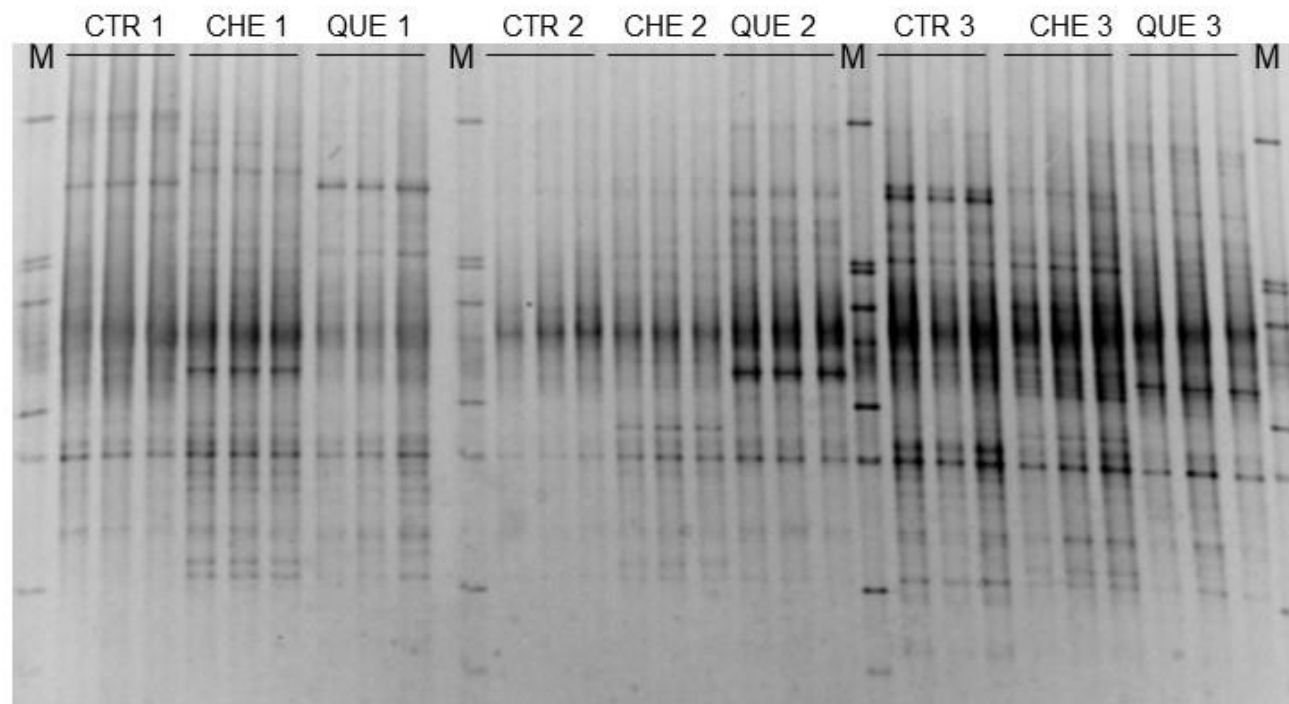


Supplementary material 1. DGGE profiles of 16S rDNA PCR products obtained from DNA extracted from rumen liquor using primer for the total bacteria (F968GC-1401R). CTR, control diet (84 g kg⁻¹ DM of soybean oil); CHE, chestnut tannins diet (84 g kg⁻¹ DM of soybean oil plus 52.8 g kg⁻¹ DM of a chestnut tannin extract); QUE, quebracho tannins diet (84 g kg⁻¹ DM of soybean oil plus 52.8 g kg⁻¹ DM of a quebracho tannin extract); M, marker used for normalization of bands.



Supplementary material 2. DGGE profiles of 16S rDNA PCR products obtained from DNA extracted from rumen liquor using primer for the *Butyrivibrio* group (F968GC-B fib). CTR, control diet (84 g kg⁻¹ DM of soybean oil); CHE, chestnut tannins diet (84 g kg⁻¹ DM of soybean oil plus 52.8 g kg⁻¹ DM of a chestnut tannin extract); QUE, quebracho tannins diet (84 g kg⁻¹ DM of soybean oil plus 52.8 g kg⁻¹ DM of a quebracho tannin extract); M, marker used for normalization of bands.